

A G E N D A

SOUTH CAROLINA WORKERS' COMPENSATION COMMISSION

1333 Main Street, 5th Floor
Columbia, South Carolina 29201
October 17, 2022 10:30 a.m.

Meeting to be held in Hearing Room A

This meeting agenda was posted prior to the meeting and proper advance notice was made to all concerned parties in compliance with requirements in the Freedom of Information Act.

1. CALL TO ORDER CHAIRMAN BECK
2. APPROVAL OF AGENDA OF BUSINESS MEETING CHAIRMAN BECK
OF OCTOBER 17, 2022
3. APPROVAL OF MINUTES OF THE REGULAR BUSINESS MEETING CHAIRMAN BECK
OF SEPTEMBER 19, 2022, (Tab 1)
4. GENERAL ANNOUNCEMENTS MR. CANNON
5. APPLICATIONS FOR APPROVAL TO SELF-INSURE (Tab 2) MS. BROWN
6. DEPARTMENT DIRECTORS' REPORTS MS. WARD
Human Resources (Tab 3) MR. PLUSS
Information Services (Tab 4) MR. DUCOTE
Insurance and Medical Services (Tab 5) MS. SPANN
Claims (Tab 6) MS. BRACY
Judicial (Tab 7)
7. DEPARTMENT OF VOCATIONAL REHABILITATION MR. CANNON
Monthly Report (Tab 8)
8. EXECUTIVE DIRECTOR'S REPORT (Tab 9) MR. CANNON
9. FINANCIAL REPORT (Tab 10) MR. CANNON
10. OLD BUSINESS CHAIRMAN BECK
11. EXECUTIVE SESSION CHAIRMAN BECK
General Counsel has requested an Executive Session to discuss pending litigation.
12. ADJOURNMENT CHAIRMAN BECK

Table of Contents

| | |
|-----------|--|
| 1 | Approval of Minutes of Business Meeting of September 19, 2022 |
| 2 | Self-Insurance |
| 3 | Human Resources |
| 4 | Information Services |
| 5 | Insurance & Medical Services |
| 6 | Claims |
| 7 | Judicial |
| 8 | Vocational Rehabilitation |
| 9 | Executive Director's Report |
| 10 | Financial Report |
| 11 | New Business |

TAB 1

THE
SOUTH CAROLINA WORKERS'
COMPENSATION COMMISSION
BUSINESS MEETING
September 19, 2022

A Business Meeting of the South Carolina Workers' Compensation Commission was held in Hearing Room A of the Workers' Compensation Commission on Monday, September 19, 2022, at 10:30 a.m. The meeting agenda was posted prior to the meeting and proper advance notice was made to all concerned parties in compliance with requirements in the Freedom of Information Act. The following Commissioners were present:

T. SCOTT BECK, CHAIRMAN
GENE MCCASKILL, VICE CHAIR
R. MICHAEL CAMPBELL, II, COMMISSIONER
MELODY L. JAMES, COMMISSIONER
AVERY WILKERSON, COMMISSIONER
AISHA TAYLOR, COMMISSIONER
CYNTHIA DOOLEY, COMMISSIONER

Present also were Gary Cannon, Executive Director; Keith Roberts, General Counsel, Christy Brown, Self-Insurance Director; Amy Bracy, Judicial Director; Wayne Ducote, Insurance & Medical Services Director; Kristen Mcrec, Staff Attorney; Bridget Ward, Human Resource Director; Kris Pluss, Director of Information Technology; Harriet Abner and James Williams from Vocational Rehabilitation.

Chairman Beck called the meeting to order at 10:37 a.m.

AGENDA

Commissioner McCaskill moved that the agenda be approved. Commissioner Dooley seconded the motion, and the motion was approved.

APPROVAL OD MINUTES – BUSINESS MEETING OF August 29, 2022

Commissioner McCaskill moved that the minutes of the Business Meeting of August 29, 2022, be approved. Commissioner James seconded the motion, and the motion was approved.

GENERAL ANNOUNCEMENTS

There were no general announcements.

APPLICATIONS FOR APPROVAL TO SELF-INSURE

Self-insurance applications were presented by Christy Brown, Self-Insurance Director. **Six (6)** prospective members of **Three (3)** funds were presented to the Commission for approval. The applications were:

Palmetto Timber Fund

Brandt Forest Products

South Carolina Home Builders SIF

Capital Concrete Company, Inc.

Graham's Heating & Air, LLC

PH Padgett Construction, LLC

Taylor's Window & Screen

South Carolina Automobile Dealers Association

Terry Lambert Hyundai

After examination of the applications, it was determined that each complied with the Commission's requirements, and each was recommended for approval.

Commissioner Wilkerson made the motion to approve the applications to self-insure. Commissioner Taylor requested to be recused from the vote. Commissioner James seconded the motion to approve the applications to self-insure, and the motion was approved.

DEPARTMENT DIRECTORS' REPORTS

Each Department report was submitted in written form and included in the Commission's agenda booklets.

Human Resources

Ms. Ward submitted the Human Resources report. There were no comments or questions from the Commission.

Information Technology Department

Mr. Pluss submitted the IT report. There were no comments or questions from the Commission.

Insurance and Medical Services Department

Mr. Ducote submitted his report in written form. There were no comments or questions from the Commission. Mr. Ducote also introduced Brianna Conyers, Insurance Compliance Analyst.

Claims Department

Ms. Spann submitted her report in written form. Mr. Cannon presented the report. There were no comments or questions from the Commission.

Judicial Department

Ms. Bracy submitted her report in written form. There were no questions from the Commission.

VOCATIONAL REHABILITATION

Mr. Cannon submitted the report received from Vocational Rehabilitation. Ms. Harriet Abner and Mr. James Williams presented the report and explained the new ways they are trying to assist the community. They also answered questions by the Chairman and Commissioner Wilkerson.

EXECUTIVE DIRECTOR'S REPORT

Mr. Cannon submitted his report in written form. There were no comments or questions from the Commission.

ADMINISTRATION – FINANCIAL REPORT

Mr. Cannon submitted his report in written form. There were no questions from the Commission.

OLD BUSINESS

There was no old business.

NEW BUSINESS

There was no new business.

EXECUTIVE SESSION

Commissioner Taylor made a motion to move into Executive Session to discuss pending litigation matters. Commissioner McCaskill seconded the motion, and the motion was approved. The Commission went into Executive Session at 10:59 a.m.

Commissioner Taylor made the motion to leave Executive Session at 11:30 a.m.; noting that no activity was taken. Commissioner McCaskill seconded the motion, and the motion was approved.

ADJOURNMENT

Commissioner Taylor made the motion to adjourn. Commissioner Wilkerson seconded the motion, and the motion was approved.

The September 19, 2022, meeting of the South Carolina Workers' Compensation Commission adjourned at 11:30 am.

Reported September 20, 2022
Arnisha Keitt
Executive Assistant

TAB 2

TAB 3

State of South Carolina

1333 Main Street, 5th Floor
P.O. Box 1715
Columbia, S.C. 29202-1715



TEL: (803) 737-5700
FAX: (803) 737-5764

Workers' Compensation Commission

TO: Gary Cannon
FROM: Bridget Ward
DATE: October 7, 2022

SUBJECT: Monthly Human Resources Report for October 2022 Business Meeting

This report summarizes Human Resources' activities from September 1, 2022, through September 30, 2022.

At the end of September, the Commission had 49 full-time employees and two part-time employees.

- **New Hires:** One
- **Separations or Retirements:** One
- **FMLA Leaves:** None

Two SCEIS personnel transactions and ten SCEIS time/leave transactions were processed in September. Detailed payroll and time/leave reports were run as scheduled. Any issues that arose were corrected with the collaborative effort of either the SCIES team or the Comptroller General Office.

HR participated in two webinars hosted by PEBA concerning the 2022 open enrollment and hosted a Prisma Health Flu Shot Event for the SC Lottery and the Commission that had to be rescheduled for October 18.

Seven "All Employee" emails were sent by HR during September, and ten travel reports were processed. HR received and reviewed 1135 emails and sent 1116 emails.

There were two building issues and no parking issues in September. The building issues were resolved promptly, and two updates to the parking assignments were submitted.

There was one COVID case in the month of September. The employees returned to work after the protocol was followed, contact tracing was done, and the appropriate quarantine/isolation period was observed.

Due to the severity of hurricane Ian, the Commission was closed to the public and employees were told not to report to work on September 30.

Staffing:

1 New employee:

- IMS -Program Co I started on 9/2

1 Separated employee:

- IMS – Program Co I left on 9/16

TAB 4

State of South Carolina

1333 Main St, Suite 500
P.O. Box 1715
Columbia, S.C. 29202-1715



Tel: (803) 737-5700
Fax: (803) 737-1258
www.wcc.sc.gov

Workers' Compensation Commission

To: Gary Cannon, SCWCC Executive Director
From: Kris Pluss, IT Director
Date: October 7, 2022
Subject: IT Department September 2022 Full Commission Report

This report summarizes the activities and accomplishments for projects and initiatives in the IT department during September 2022.

I. Systems Operations, Maintenance and Support

EDI

WCC IT Staff is continuing to work with the ISO/Verisk to establish processes and an implementation plan for the EDI claims processing migration. We continue our participation in IAIABC conference calls for: Jurisdiction Only meetings, EDI Claims Committee and the POC 3.0 taskforce. Liz Schinke is the Project Lead for this work effort. Phase 1 is scheduled to be completed during the First Quarter of 2023.

Progress

WCC IT Staff had two virtual meetings with Progress Software Engineers and Sales Consultants to define POA (plan of action) for addressing the existing application stability concerns and enhancements for EDI, Form Creation and eCase. A Sole Source PO was created for the vendor provided Professional Services for Phase 1.

Systems Support

The IT team continues to collectively manage all end user support for agency provided workstations, iPhones, and iPads.

Security

We had no security alerts in September.

Reporting

122 Service Desk tickets were received by WCC IT during September 2022.
115 Tickets were assigned a priority of Low / Medium.
6 Tickets were assigned a priority of High.
1 Ticket was assigned a priority of Urgent.

II. Projects, Enhancements and Development

Legacy Modernization

WCC IT had two virtual meetings with SC.Gov / NIC to discuss the ePay Project Scope (online payments). SC.Gov presented a demonstration of the ePay web portal with WCC specific objects (forms and branding). WCC IT continues to work with WCC Division Managers to refine the Forms that will be available for upload within the web portal. Phase 1 is scheduled to be completed in the Second Quarter, 2023.

TAB 5

State of South Carolina



Workers' Compensation Commission

To: Mr. Gary Cannon
SCWCC Executive Director

From: Wayne Ducote, Jr.
IMS Director

Date: 13-Oct-22

Subj: Insurance and Medical Services Department
September 2022 Full Commission Report

Please find attached information provided to summarize the status and workflow of initiatives currently underway within the Insurance and Medical Services (IMS) Department.

In addition to the statistical data provided, please be advised of the following:

- | | |
|---------------------|--|
| Compliance Division | <ol style="list-style-type: none">1. Reviewing revenue metrics / projections.2. Working with staff to review workflow processes and additional training opportunities.3. Continuing to explore outreach opportunities with stakeholders. |
| Coverage Division | <ol style="list-style-type: none">1. Working with staff to review workflow processes and explore opportunities to enhance service provision.2. Lapse in Coverage: 36 new registrants; 0 notifications sent. |
| Medical Services | <ol style="list-style-type: none">1. Completed two medical bill reviewer certification renewals.2. Two medical bill pricing reviews were done in the month of September. |

While this summary is in no way all-inclusive, it may serve to assist you and our Commissioners in understanding the key initiatives underway in the IMS Department and provide measures by which the Department's effectiveness can be gauged. IMS welcomes any guidance that you and/or our Commissioners can provide concerning our performance and direction.

Employer Rule to Show Cause Hearings and Compliance Activity

The Compliance Division docketed 0 new RTSC cases and 0 total RTSC cases in the month of September. And, compelled 26 South Carolina employers to come into compliance with the Act. Year to date, 0 new RTSC cases and 3 total RTSC cases have been docketed.

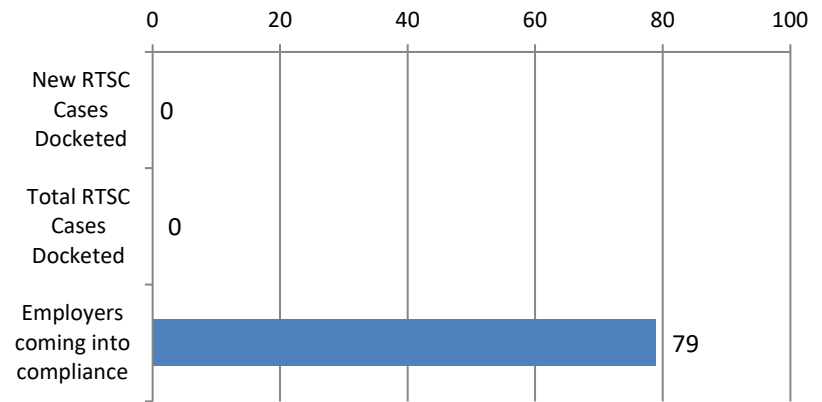
Employers Obtaining Coverage

Year to date, the Compliance Division has compelled 79 South Carolina employers to come into compliance with the Act. In so doing, approximately 689 previously uninsured workers are now properly covered.

Penalties Waived

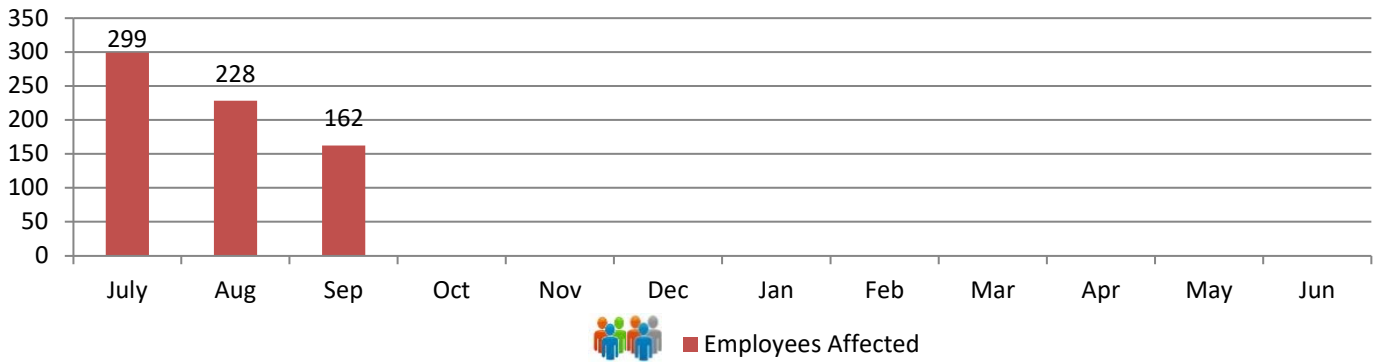
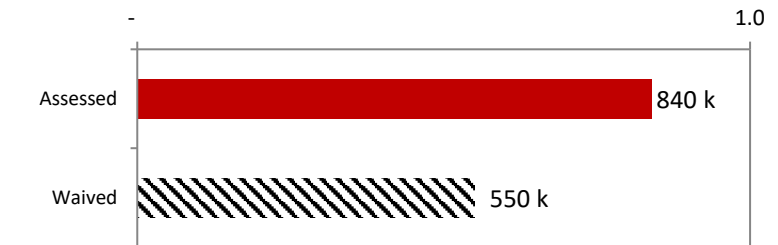
Although the Division has assessed \$840 k in fines this fiscal year, \$550 k have been waived or rescinded as employers have either obtained insurance coverage or were found not to be subject to the Act.

RTSC and Compliance Activity



Fines and Penalties

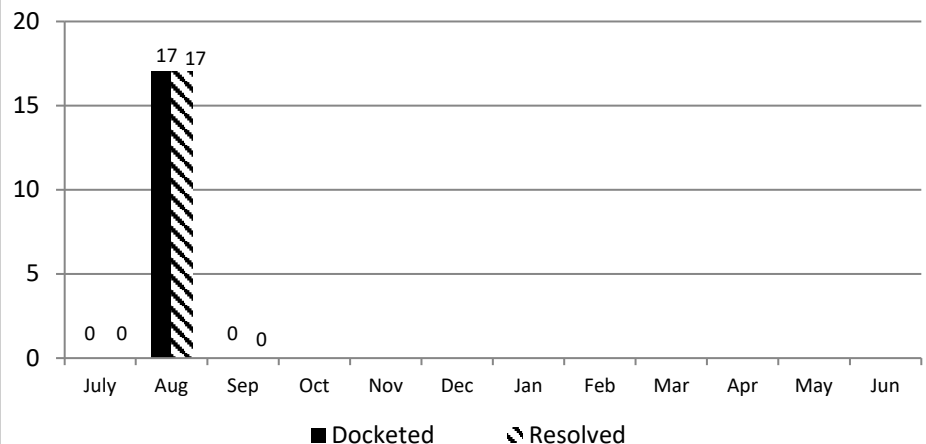
Millions



Carrier Rule to Show Cause Hearings

The Compliance Division manages the Rule to Show Cause process involving the recovery of outstanding carrier fines and penalties. In the month of September 2022, 0 carrier RTSC cases were docketed; 0 cases were resolved for a total of \$0.

Year to date, a total of 17 carrier RTSC cases have been docketed, 17 cases for a total of \$17,189 have been resolved.

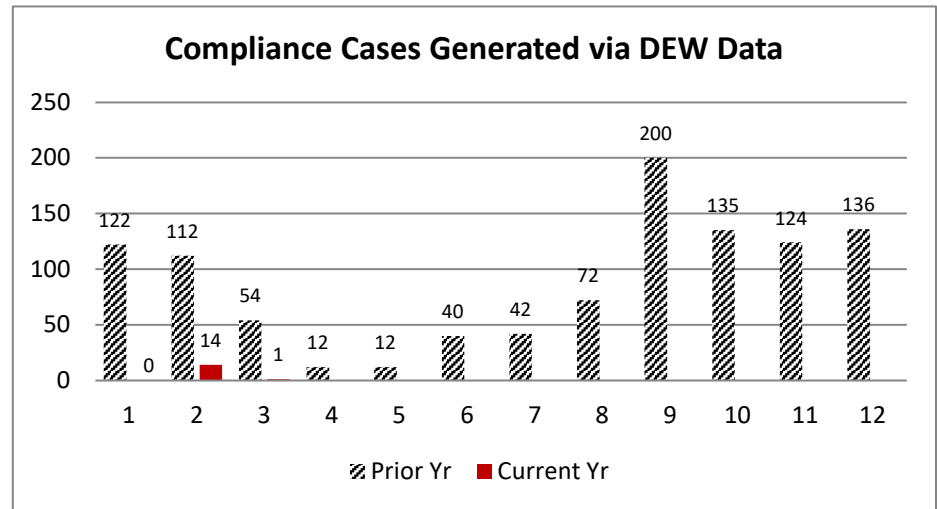
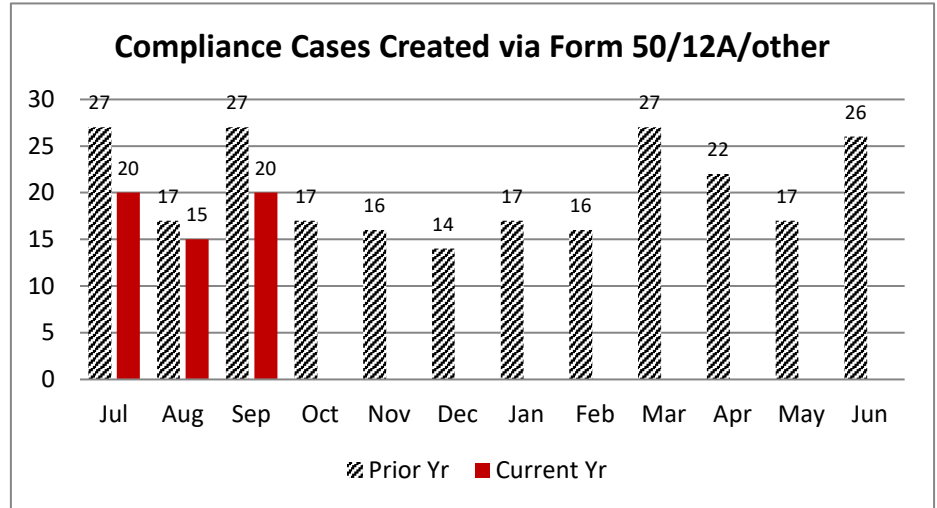


In September 2022, 20 compliance files were created from the combined filings of Form 50's, 12A's, and stakeholder reporting involving uninsured employers.

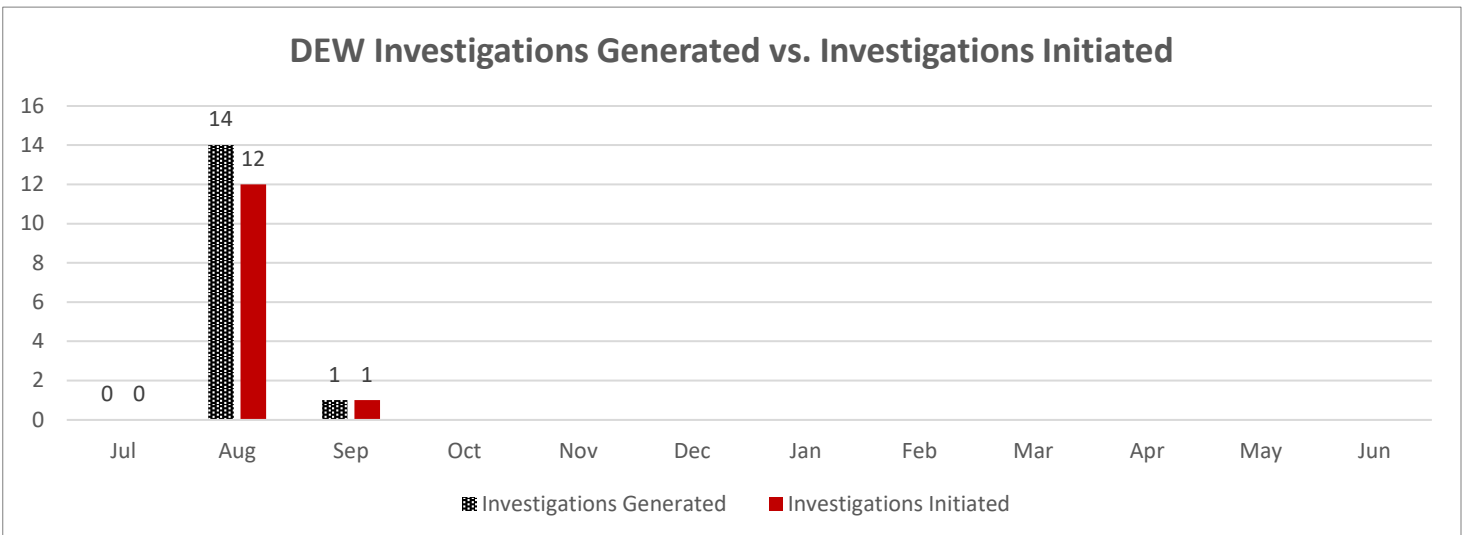
YTD vs. Prior Year total (243): 23%
 Sept 2021 to Sept 2022: 74%
 Current Yr End trend: 91% of 2021-2022
 YTD 2022-2023 v. YTD 2021-2022: 77%

In September 2022, 1 compliance files were generated from the DEW data process.

YTD vs. Prior Year total (1,061): 1%
 Sept 2021 to Sept 2022: 2%
 Current Yr End trend: 6% of 2021-2022
 YTD 2022-2023 v. YTD 2021-2022: 5%



The DEW Data Pool is determined by the total number of potential, non-compliant employers who report wages to DEW with at least 4 employees and who's FEIN does not match with any coverage records in the Commission's coverage database. The investigations generated is the number of compliance investigations generated from the pool. The investigations initiated is the number of compliance investigations initiated from those that were generated.



Carryover Caseload:

The Compliance Division closed September 2022 with 282 cases active, compared to an active caseload of 279 at the close of September 2021.

Cases Resolved:

For the month of September 2022, Compliance Division staff closed-out 47 cases.

Compliance Fines:

In September 2022, the Compliance Division collected \$20,468 in fines and penalties. Year to Date, the Compliance Division has collected \$125,351 in fines and penalties.

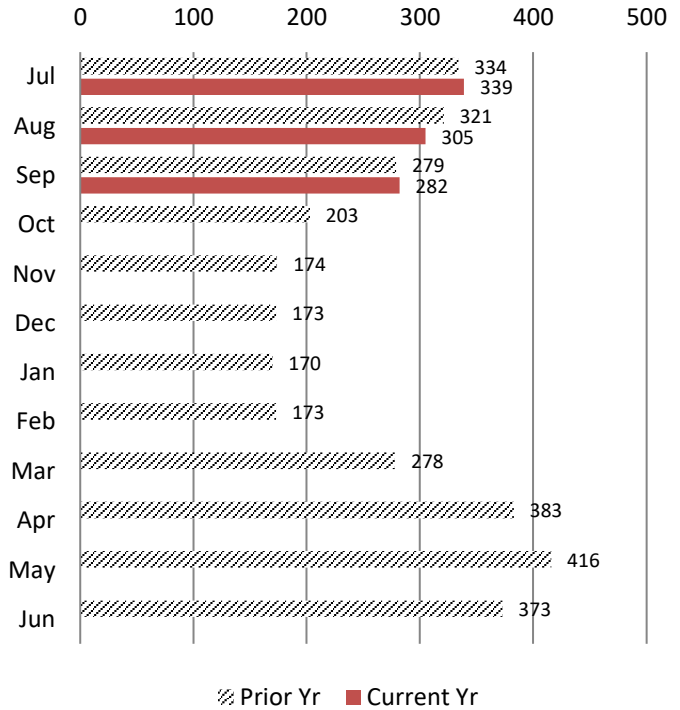
Year to Date vs Prior Year Total (\$686,193): 18%

Sept 2021 vs. Sept 2022: 29%

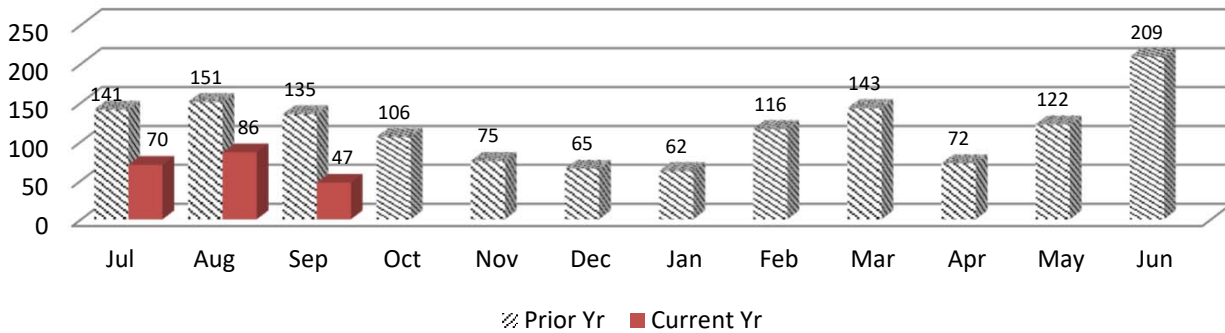
Current Year End trend is 73% of 2021-2022

YTD 2021-22 (Sept - June) vs YTD 2022-2023: 48%

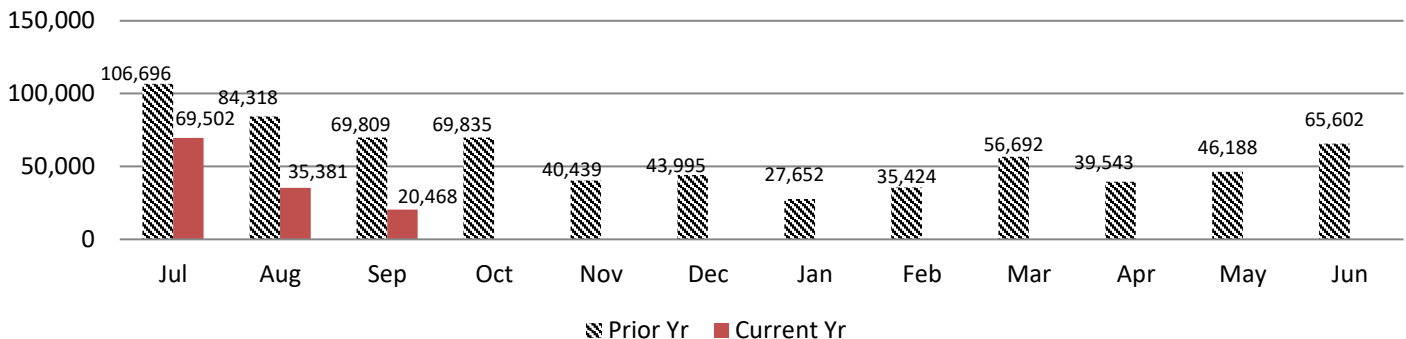
Caseload Pending v. Prior Year



Cases Resolved v. Prior Year



Compliance Fines Collected v. Prior Year

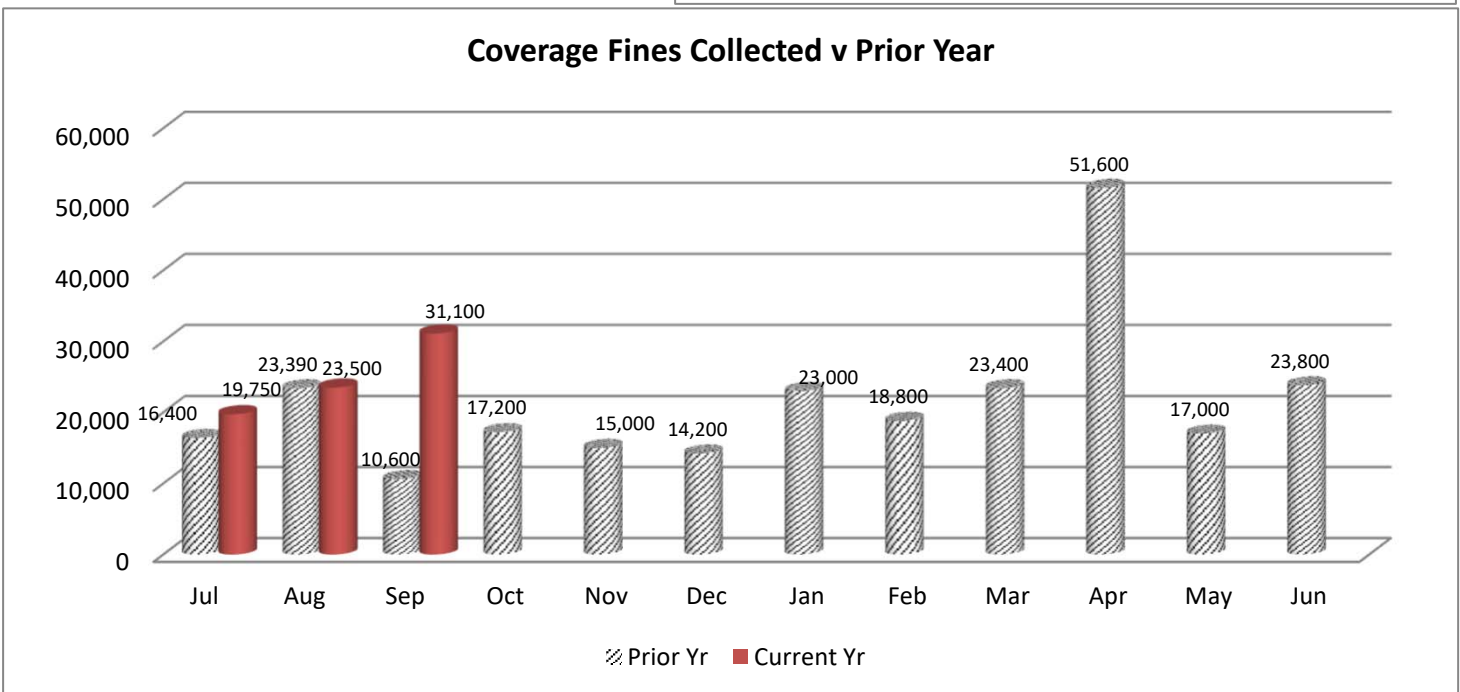
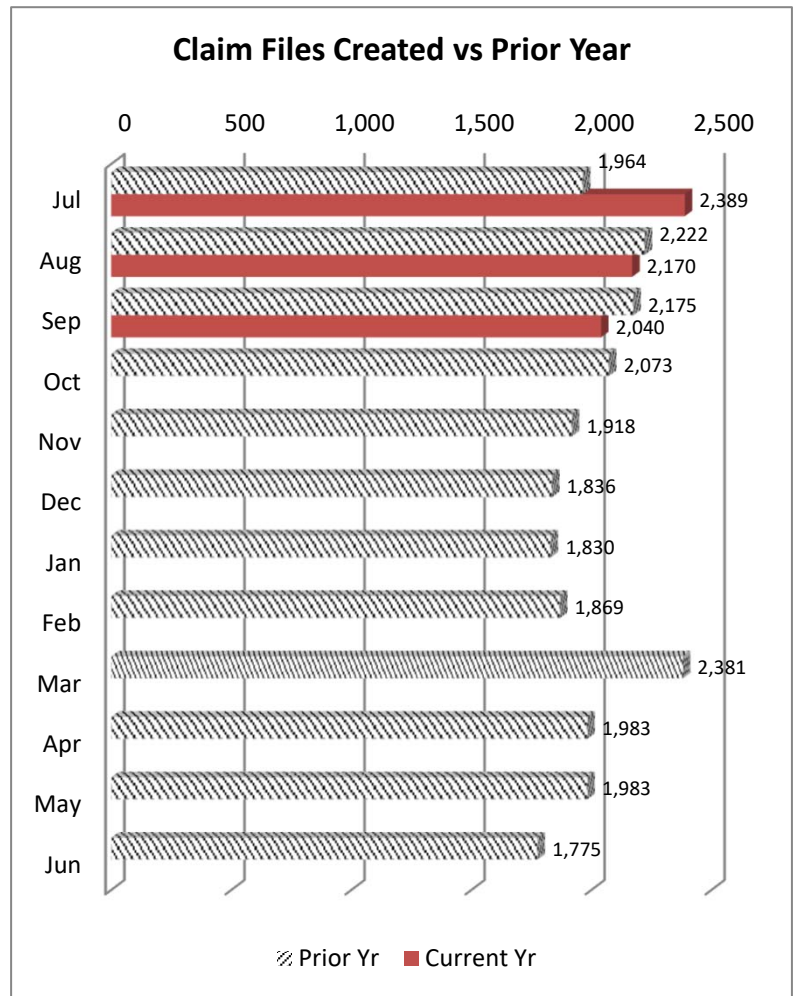


WCC Claim Files:

In September 2022, the Coverage Division received a total of 2,040 WCC Claim files. Of these, 1,732 were created through proper carrier filing of a 12A, and 308 were generated as a result of a Form 50 claim filing. Year to Date 6,599 Claim files have been created which is 27% of claim file volume prior year (24,009).

Coverage Fines:

The Coverage Division collected \$31,100 in fine revenue in September 2022, as compared to \$10,600 in Coverage fines/penalties accrued during September 2021. Year on Year, Coverage fines are at 29% of collections for prior year.



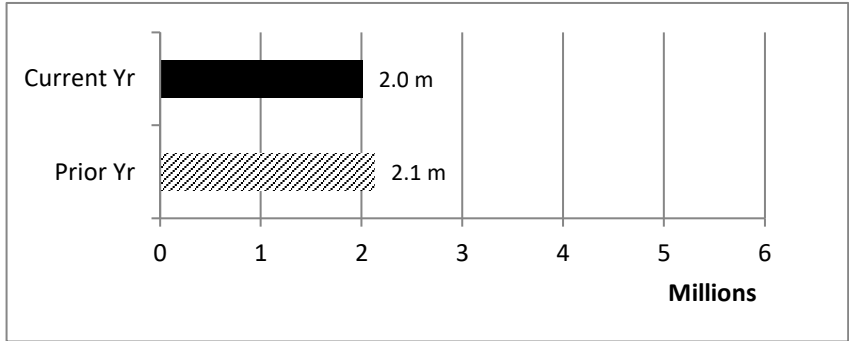
IMS SELF INSURANCE DIVISION

September 2022

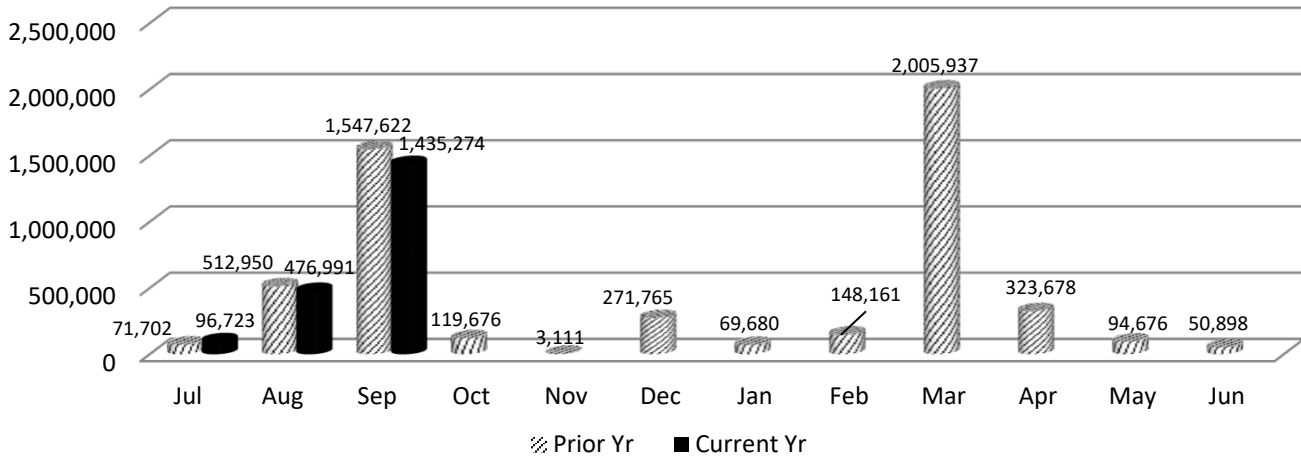
During the month of September 2022, the Self Insurance Division:

- * collected \$1,435,274 in self-insurance tax.
- * added 6 new self-insurers.
- * conducted 4 Self Insurance audits.

Year to Date, Self Insurance tax revenue is trending at 94% of prior year and 12 Self Insurance audits have been completed.



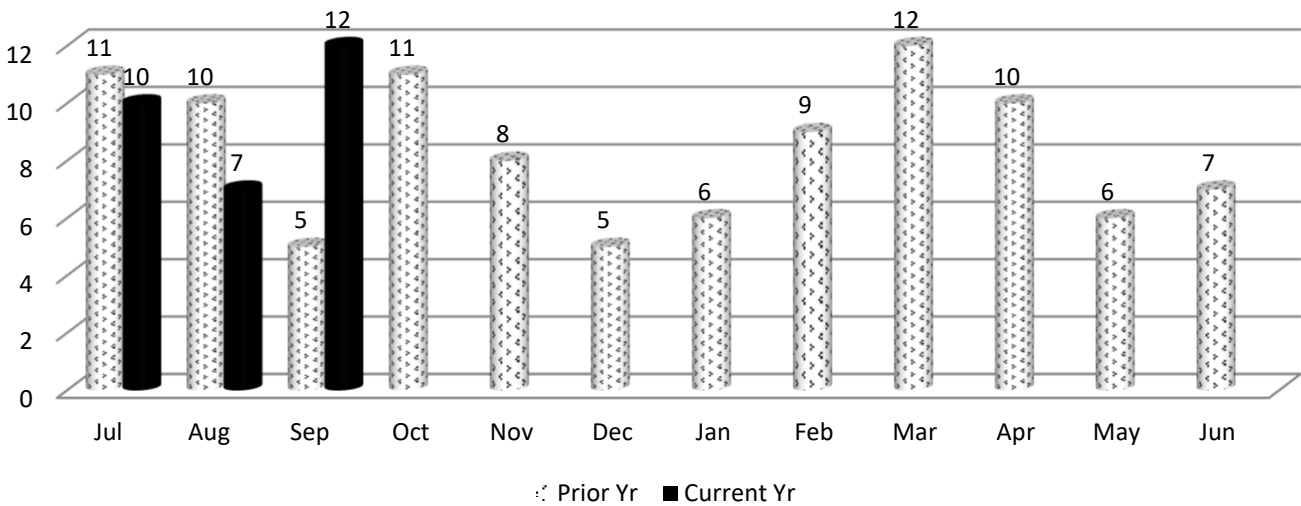
Self Insurance Tax Collections v. Prior Year



IMS MEDICAL SERVICES DIVISION

In September 2022, the Medical Services Division began the month with 7 bills pending review, received an additional 17 bills for review, conducted 12 bill reviews and ended the month with 12 bills pending.

Medical Bills Pending Review v. Prior Year



TAB 6

State of South Carolina

1333 Main Street, 5th Floor
P.O. Box 1715
Columbia, S.C. 29202-1715



TEL: (803) 737-5700
www.wcc.sc.gov

Workers' Compensation Commission **MEMORANDUM**

To: Gary Cannon, Executive Director

From: Sonji Spann, Claims Director

Date: October 17, 2022

Re: Claims Department September 2022 Full Commission Report

Attached is the Statistical Report for the Claims Department for the period July 1, 2022 - June 30, 2023, for the Business Meeting on October 17, 2022. Please note the format using row numbers and column letters for ease of use when referencing data.

Claims activities are in Column (a) with the totals for the first-month period for FY22-23 in column (o). Column (q) reflects the percentage change when comparing the totals for same period in the current fiscal at the totals for the same period in last fiscal year. The total Claims Activities, for this period have increase 1% when compared to the same period from last fiscal year.

The number of Total Fines assessed are up 11% compared to the same period last fiscal year and the Total Fines paid 13% higher when compared to the same period last year

I will be happy to answer any questions you or the Commissioners have.

Claims Department Statistical Report

FY2022-2023

July 1, 2022 - June 30, 2023

| Claims Activities | July | August | Sept | FY22-23 Total | FY21-22 Total | % Diff from prev year |
|-------------------------|---------------|---------------|---------------|------------------|------------------|-----------------------------|
| (a) | (b) | (c) | (d) | (o) | (p) | (q) |
| Forms 15-I | 1,041 | 1,220 | 1,075 | 3,336 | 3,333 | 0% |
| Forms 15-II/Forms 17 | 826 | 989 | 891 | 2,706 | 2,883 | -6% |
| Forms 16 for PP/Disf | 207 | 222 | 180 | 609 | 618 | -1% |
| Forms 18 | 5,023 | 5,227 | 4,868 | 15,118 | 13,327 | 13% |
| Forms 20 | 541 | 629 | 587 | 1,757 | 1,696 | 4% |
| Form 50 Claims Only | 311 | 269 | 284 | 864 | 848 | 2% |
| Form 61 | 602 | 781 | 617 | 2,000 | 1,914 | 4% |
| Letters of Rep | 195 | 152 | 197 | 544 | 728 | -25% |
| Clinchers | 701 | 907 | 659 | 2,267 | 2,393 | -5% |
| Third Party Settlements | 27 | 30 | 18 | 75 | 57 | 32% |
| SSA Requests for Info | 23 | 43 | 25 | 91 | 148 | -39% |
| Cases Closed | 2,056 | 2,389 | 1,821 | 6,266 | 6,535 | -4% |
| Cases Reviewed | 3,290 | 3,089 | 2,103 | 8,482 | 9,285 | -9% |
| Total | 14,843 | 15,947 | 13,325 | 44,115 | 43,766 | 1% |
| | | | | - | | |
| Total Fines Assessed | 505 | 222 | 221 | 948 | 856 | 11% |
| Form 18 Fines | 331 | 220 | 220 | 771 | 863 | -11% |
| Total Amt Paid | \$63,200 | \$59,450 | \$56,800 | 179,450 | \$158,900 | 13% |

Claims Department Statistical Report

FY2021-2022

July 1, 2021 - June 30, 2022

| Claims Activities | July | August | Sept | Oct | Nov | Dec | Jan | Feb | March | April | May | June | FY21-22 Total | FY20-21 Total | % Chg same period FY20- 21 |
|--------------------------------|---------------|---------------|---------------|---------------|---------------|---------------|---------------|---------------|---------------|---------------|---------------|---------------|------------------|------------------|----------------------------------|
| (a) | (b) | (c) | (d) | (e) | (f) | (g) | (h) | (i) | (j) | (k) | (l) | (m) | (o) | (p) | (q) |
| Forms 15-I | 1,023 | 1,157 | 1,153 | 1,077 | 1,073 | 1,030 | 882 | 920 | 1,192 | 1,035 | 1,081 | 1,062 | 12,685 | 13,499 | -6% |
| Forms 15-II/Forms 17 | 933 | 1,028 | 922 | 970 | 897 | 856 | 367 | 803 | 1,038 | 918 | 928 | 972 | 10,632 | 11,769 | -10% |
| Forms 16 for PP/Disf | 187 | 216 | 215 | 236 | 180 | 289 | 192 | 207 | 264 | 197 | 200 | 215 | 2,598 | 2,340 | 11% |
| Forms 18 | 4,325 | 4,511 | 4,491 | 4,073 | 4,310 | 4,121 | 4,306 | 4,701 | 4,901 | 4,371 | 4,350 | 3,658 | 52,118 | 49,470 | 5% |
| Forms 20 | 546 | 591 | 559 | 589 | 574 | 2,111 | 537 | 502 | 598 | 553 | 590 | 606 | 8,356 | 6,593 | 27% |
| Form 50 Claims Only | 291 | 316 | 241 | 286 | 290 | 504 | 218 | 279 | 327 | 249 | 268 | 279 | 3,548 | 3,150 | 13% |
| Form 61 | 652 | 655 | 607 | 656 | 672 | 751 | 641 | 626 | 697 | 668 | 693 | 651 | 7,969 | 7,957 | 0% |
| Letters of Rep | 251 | 258 | 219 | 201 | 204 | 169 | 186 | 216 | 229 | 160 | 189 | 209 | 2,491 | 2,471 | 1% |
| Clinchers | 831 | 744 | 818 | 786 | 798 | 872 | 855 | 785 | 866 | 815 | 792 | 774 | 9,736 | 10,013 | -3% |
| Third Party Settlements | 14 | 24 | 19 | 17 | 12 | 15 | 19 | 17 | 25 | 23 | 25 | 25 | 235 | 154 | 53% |
| SSA Requests for Info | 64 | 49 | 35 | 42 | 42 | 29 | 30 | 26 | 37 | 43 | 38 | 20 | 455 | 459 | -1% |
| Cases Closed | 2,028 | 2,233 | 2,275 | 2,136 | 2,049 | 2,111 | 2,103 | 2,027 | 2,553 | 2,179 | 1,987 | 2,091 | 25,772 | 27,381 | -6% |
| Cases Reviewed | 2,849 | 3,742 | 2,694 | 2,261 | 2,228 | 2,435 | 2,909 | 2,953 | 3,407 | 3,406 | 2,736 | 3,939 | 35,559 | 37,119 | -4% |
| Total | 13,994 | 15,524 | 14,248 | 13,330 | 13,329 | 13,433 | 13,245 | 14,072 | 16,134 | 14,617 | 15,864 | 14,501 | 172,291 | 172,375 | -1% |
| | | | | | | | | | | | | | - | - | |
| Total Fines Assessed | 297 | 338 | 221 | 184 | 119 | 310 | 543 | 328 | 370 | 334 | 274 | 341 | 3,659 | 2,882 | 13% |
| Form 18 Fines | 331 | 321 | 211 | 184 | 118 | 310 | 530 | 316 | 365 | 314 | 267 | 330 | 3,597 | 2,634 | 37% |
| Total Amt Paid | \$38,650 | \$60,800 | \$59,450 | \$33,400 | \$23,800 | \$34,400 | \$47,400 | \$35,200 | \$52,400 | \$86,500 | \$45,850 | \$40,650 | 558,500 | 379,100 | 47% |

TAB 7

State of South Carolina

1333 Main Street
P.O. Box 1715
Columbia, S.C. 29202-1715



Tel: (803) 737-5700
Fax: (803) 737-1234
www.wcc.sc.gov

Workers' Compensation Commission

October 6, 2022

To: Gary Cannon
Executive Director

From: Amy A. Bracy
Judicial Director

RE: Monthly Judicial Report for September 2022

During the month of September, the Judicial Department processed seven hundred ten (710) requests for hearings (claimant and defense pleadings). Comparing the numbers from the same period last year, claimant pleadings are up 11% and defense pleadings experienced an 18% decrease. The department received one hundred twelve (112) Motions, a 6% decrease compared to the same period last year and one hundred forty-four (144) clincher conference requests, up 1% compared to last year.

There were fifty-seven (57) Single Commissioner Hearings conducted during the past month, six (6) pre-hearing conferences held, and ten (10) Full Commission hearings held. A total of five hundred sixteen (516) Orders (Single Commissioner Orders, Consent Orders and Administrative Orders) were served at the single Commissioner level, thirty-six (36) of those were Decision and Orders that resulted from hearings that went on the record and one hundred twenty-nine (129) were Motion Orders that were a result of Motions ruled upon by Commissioners.

There were two hundred forty-two (242) Informal Conferences requested during September and one hundred sixty-four (164) were conducted.

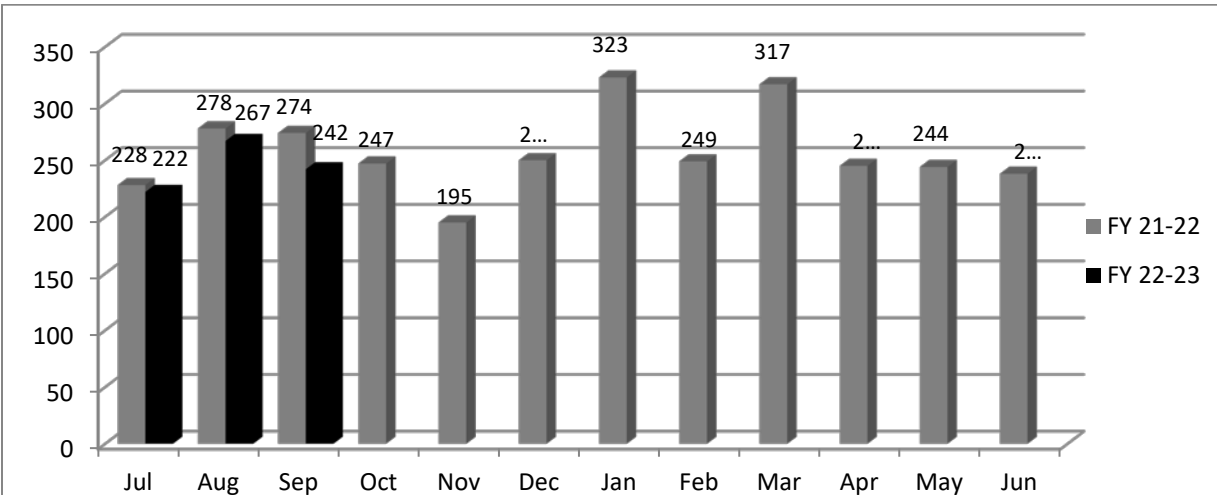
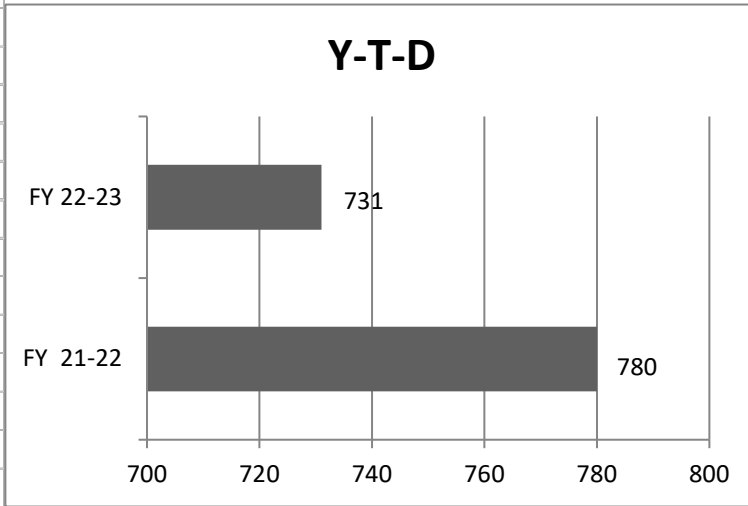
There were twenty-nine (29) regulatory mediations scheduled and fifty-five (55) requested mediations. Totals are up 20% and down 7% in the respective categories for the same period last year. The Judicial Department was notified of thirty-three (33) matters resolved in mediation, with the receipt of Forms 70. This category's total is down 33% compared to the same period last year. This does not include mediations that take place outside of what is reported to the Commission.

In the month of September, Judicial received one (1) Notice of Intent to Appeal to the Court of Appeals and zero (0) to the Circuit Court.

**Judicial Department Statistical Report
Statistics For Fiscal Year 2022-2023**

| | July | Aug | Sept | Oct | Nov | Totals YTD 2022- | Totals YTD 2021- | % Diff from prev year |
|---|------|-----|------|-----|-----|------------------------|------------------------|--------------------------|
| Claimant Pleadings | 612 | 586 | 510 | | | 1,708 | 1540 | 11% |
| Defense Response to Pleadings | 474 | 495 | 439 | | | 1,408 | 1281 | 10% |
| Defense Pleadings | 223 | 301 | 200 | | | 724 | 882 | -18% |
| Motions | 104 | 130 | 112 | | | 346 | 369 | -6% |
| Form 30 | 11 | 7 | 9 | | | 27 | 41 | -34% |
| FC Hearings Held | 4 | 8 | 10 | | | 22 | 23 | -4% |
| FC Orders Served | 8 | 6 | 11 | | | 25 | 39 | -36% |
| Single Comm. Hearings Held | 31 | 52 | 57 | | | 140 | 153 | -8% |
| Single Comm. Orders Served | 160 | 182 | 183 | | | 525 | 608 | -14% |
| Single Comm. Pre-Hearing Conf Held | 20 | 31 | 6 | | | 57 | 51 | 12% |
| Consent Orders | 261 | 230 | 318 | | | 809 | 685 | 18% |
| Administrative Orders | 2 | 23 | 15 | | | 40 | 35 | 14% |
| Clincher Conference Requested | 122 | 149 | 144 | | | 415 | 412 | 1% |
| Informal Conference Requested | 222 | 267 | 242 | | | 731 | 780 | -6% |
| Informal Conference Conducted | 188 | 212 | 164 | | | 564 | 586 | -4% |
| Regulatory Mediations | 27 | 39 | 29 | | | 95 | 79 | 20% |
| Requested Mediations | 47 | 67 | 55 | | | 169 | 182 | -7% |
| Ordered Mediations | 1 | 0 | 0 | | | 1 | 0 | 100% |
| Mediation Resolved | 39 | 60 | 33 | | | 132 | 166 | -20% |
| Mediation Impasse | 8 | 12 | 8 | | | 28 | 52 | -46% |
| Mediation Held; Issues Pending | 0 | 0 | 2 | | | 2 | 4 | 0% |
| Claim Settled Prior to Mediation | 6 | 9 | 10 | | | 25 | 35 | -29% |
| Mediation Not Complete in 60 days | 2 | 6 | 3 | | | 11 | 7 | 57% |

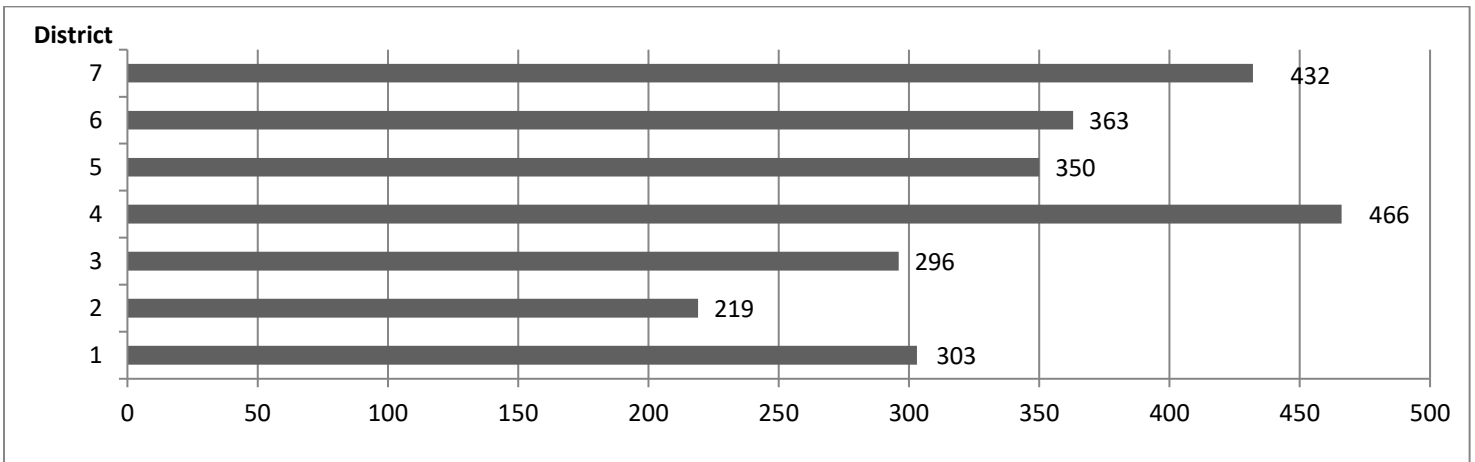
| | Informal Conf. Requested | |
|--------------|--------------------------|------------|
| | FY 21-22 | FY 22-23 |
| Jul | 228 | 222 |
| Aug | 278 | 267 |
| Sep | 274 | 242 |
| Oct | 247 | |
| Nov | 195 | |
| Dec | 250 | |
| Jan | 323 | |
| Feb | 249 | |
| Mar | 317 | |
| Apr | 245 | |
| May | 244 | |
| Jun | 238 | |
| Total | 3088 | 731 |
| | | |
| | FY 21-22 | FY 22-23 |
| Y-T-D | 780 | 731 |



Pleadings Assigned - Three Year Comparison by Month

| | District 1 | | | District 2 | | | District 3 | | | District 4 | | | District 5 | | | District 6 | | | District 7 | | | | | |
|---------------|------------|-------------|-------------|------------|------------|------------|------------|-------------|-------------|------------|-------------|-------------|------------|-------------|-------------|-------------|-------------|-------------|------------|-------------|-------------|-------|-------|-------|
| | Greenville | | | Anderson | | | Orangeburg | | | Charleston | | | Florence | | | Spartanburg | | | Richland | | | | | |
| | 22-23 | 21-22 | 20-21 | 22-23 | 21-22 | 20-21 | 22-23 | 21-22 | 20-21 | 22-23 | 21-22 | 20-21 | 22-23 | 21-22 | 20-21 | 22-23 | 21-22 | 20-21 | 22-23 | 21-22 | 20-21 | 22-23 | 21-22 | 20-21 |
| Jul | 105 | 112 | 120 | 81 | 87 | 81 | 112 | 72 | 85 | 150 | 166 | 151 | 111 | 109 | 126 | 135 | 122 | 112 | 142 | 156 | 154 | | | |
| Aug | 105 | 93 | 88 | 70 | 67 | 73 | 86 | 101 | 105 | 172 | 174 | 142 | 118 | 112 | 125 | 124 | 101 | 95 | 155 | 134 | 133 | | | |
| Sep | 93 | 109 | 87 | 68 | 77 | 70 | 98 | 96 | 107 | 144 | 158 | 162 | 121 | 143 | 128 | 104 | 112 | 113 | 135 | 143 | 169 | | | |
| Oct | | 89 | 93 | | 73 | 81 | | 103 | 125 | | 152 | 175 | | 110 | 115 | | 95 | 104 | | 130 | 159 | | | |
| Nov | | 96 | 92 | | 66 | 88 | | 95 | 100 | | 144 | 176 | | 112 | 96 | | 84 | 104 | | 116 | 134 | | | |
| Dec | | 104 | 90 | | 80 | 68 | | 100 | 115 | | 156 | 168 | | 123 | 132 | | 108 | 96 | | 131 | 141 | | | |
| Jan | | 85 | 79 | | 54 | 56 | | 84 | 96 | | 167 | 172 | | 129 | 110 | | 91 | 88 | | 118 | 124 | | | |
| Feb | | 93 | 84 | | 75 | 88 | | 87 | 86 | | 170 | 133 | | 105 | 101 | | 108 | 93 | | 145 | 118 | | | |
| Mar | | 108 | 125 | | 87 | 93 | | 84 | 118 | | 186 | 201 | | 149 | 132 | | 130 | 106 | | 166 | 164 | | | |
| Apr | | 106 | 94 | | 75 | 63 | | 82 | 100 | | 181 | 138 | | 120 | 112 | | 127 | 106 | | 164 | 134 | | | |
| May | | 82 | 90 | | 69 | 69 | | 81 | 85 | | 149 | 134 | | 130 | 110 | | 103 | 98 | | 136 | 126 | | | |
| Jun | | 122 | 95 | | 74 | 74 | | 100 | 98 | | 161 | 164 | | 152 | 117 | | 111 | 103 | | 147 | 134 | | | |
| Totals | 303 | 1199 | 1137 | 219 | 884 | 904 | 296 | 1085 | 1220 | 466 | 1964 | 1916 | 350 | 1494 | 1404 | 363 | 1292 | 1218 | 432 | 1686 | 1690 | | | |

Pleadings Assigned by District Year to Date



TAB 8

No report submitted at the time of publication

TAB 9

State of South Carolina



Workers' Compensation Commission

Executive Director's Report October 17, 2022

Meetings/Activities

During the month of August the Executive Director reported the following meetings and activities: Completed and submitted the FY2022 Accountability Report; submitted FY2023-24 Budget request to the Executive Budget Office; attended SCWCEA Annual Conference in Myrtle Beach; participated in a conference call with MUSC to discuss a presentation to their executive team; testified in Circuit Court at the Westpoint trial; had a conference call with Mark Pew about WorkCompCollege; attended an afternoon session of the SC Information Technology Association meeting in Columbia; and continued to work on the final language of the parking lease.

Constituent /Public Information Services

For the month of September, the Executive Director's and the General Counsel's offices had 382 contacts with stakeholders.

Financial Transactions Activity

During the month of September, the Director's office processed and approved 32 travel expense reports, 138 invoices, and 38 deposits for DOA to process in the SCIES system.

SCWCC Stakeholder Electronic Distribution List

For the month of September, the Office had 4 (four) additions to the email distribution list.

Advisory Notices

During the month of September, the office posted one (1) notice on the Commission's website and emailed it to the distribution list.

TAB 10

State of South Carolina

1333 Main Street, 5th Floor
P.O. Box 1715
Columbia, S.C. 29202-1715



TEL: (803) 737-5700
www.wcc.sc.gov

Workers' Compensation Commission

MEMORANDUM

TO: COMMISSIONERS

**FROM: Gary Cannon
Executive Director**

DATE: October 17, 2022

RE: FINANCIAL REPORT – FY Period ending September 30, 2022

Attached is the Budget vs. Actual Report for the General Fund and Earmarked Fund for the fiscal year period ending September 30, 2022. The benchmark for this period is 25%.

Expenditures

The expenditures for the General Fund are on pages 1-2 of the attached report "Budget vs. Actual Report FY2022. The year-to-day expenditures in the General Fund (10010000) for this period is \$818,481, which is 29% of the budget. Page 3 and 4 reflects the balances of funds appropriated by the General Assembly for the IT System Modernization Project.

The Earmarked Fund (38440000) financials begin on page 5 with the total expenditures found on page 9. The total expenditures for this period are \$903,395 which is 16% of budget.

Revenues

The Commission received \$634,724 in Earmarked Fund operating revenues for this period. We currently are at 20% of the amount budgeted for the year.

Self-Insurance Tax Funds

To date we have received \$ 524,948 of Self-Insurance Tax funds.

South Carolina Workers' Compensation Commission
Earmarked Fund Revenues
FY 2023 As of 9/30/2022
25% of year elapsed

| Account | Acct No. | Budget | YTD Actual Revenue | % of Budget |
|---------------------------------------|-----------------|--------------------|---------------------------|--------------------|
| WORKERS' COMPENSATION HEARING FEE | 4110090000 | \$1,091,322 | \$ 236,895 | 22% |
| WORKERS COMP SELF INSURANCE APPLICATI | 4160040000 | \$ 26,555 | \$ 500 | 2% |
| WORKERS COMPENSATION FILING VIOLATION | 4223030000 | \$1,985,476 | \$ 378,807 | 19% |
| PARKING FEE | 4350040000 | \$ 5,900 | \$ 1,595 | 27% |
| WORKERS COMPENSATION AWARD REVIEW F | 4350140000 | \$ 32,251 | \$ 3,600 | 11% |
| PHOTOCOPYING FEE | 4380050000 | \$ 25,300 | \$ 13,927 | 55% |
| SALE OF LISTINGS & LABELS | 4480060000 | \$ 4,187 | \$ 125 | 3% |
| REFUND PRIOR YR EXPENDITURE | 4520010000 | | \$ - | |
| RETURNED CHECKS | 4530010000 | | \$ (1,025) | |
| ADJUSTMENT TO AGENCY DEPOSITS | 4530020000 | | \$ - | |
| MISCELLANEOUS REVENUE | 4530030000 | | \$ 300 | |
| Total Revenues | | \$3,170,991 | \$ 634,724 | 20% |
| Self Insurance Tax | | \$2,500,000 | \$ 524,948 | 21% |
| Total | | \$5,670,991 | \$1,159,672 | 20% |

South Carolina Workers' Compensation Commission
Budget vs. Actual Report
FY 2023 As of 9/30/2022
25% of year elapsed

Fund 10010000 - GENERAL FUND - Operating Items

Administration

| Commitment Item | Commitment Item Description | Current Budget | YTD Expenditures | % Used | Commitments | Remaining Balance |
|------------------------------|-----------------------------|----------------|------------------|------------|-------------|-------------------|
| 501015 | DIRECTOR | 142,153 | 42,705 | 30% | | 99,448 |
| 501058 | CLASSIFIED POS | | 11,375 | | | -11,375 |
| 501070 | OTH PERS SVC | | 5,820 | | | -5,820 |
| 512001 | OTHER OPERATING | 216,035 | | | | |
| 5050010000 | IN ST-MEALS-NON-REP | | 230 | | | |
| 5050020000 | IN ST-LODGING | | 1,421 | | | |
| 5050041000 | HR-IN ST-AUTO MILES | | 729 | | | |
| 5050060000 | IN ST-MISC TR EXP | | 196 | | | |
| Total OTHER OPERATING: | | 216,035 | 2,576 | 1% | 0 | 213,459 |
| Total Administration: | | 358,188 | 62,476 | 17% | 0 | 295,712 |

Claims

| Commitment Item | Commitment Item Description | Current Budget | YTD Expenditures | % Used | Commitments | Remaining Balance |
|----------------------|-----------------------------|----------------|------------------|------------|-------------|-------------------|
| 501058 | CLASSIFIED POS | 82,579 | 24,808 | 30% | | 57,771 |
| Total Claims: | | 82,579 | 24,808 | 30% | | 57,771 |

Commissioners

| Commitment Item | Commitment Item Description | Current Budget | YTD Expenditures | % Used | Commitments | Remaining Balance |
|-----------------------------|-----------------------------|------------------|------------------|------------|-------------|-------------------|
| 501026 | CHAIRMAN | 172,258 | 51,749 | 30% | | 120,509 |
| 501033 | COMMISSIONER | 1,003,438 | 331,915 | 33% | 0 | 671,523 |
| 501050 | TAXABLE SUBS | 56,950 | 18,789 | 33% | | 38,161 |
| 501058 | CLASSIFIED POS | 362,545 | 104,308 | 29% | | 258,237 |
| 501070 | OTH PERS SVC | | 1,207 | | | -1,207 |
| Total Commissioners: | | 1,595,191 | 507,967 | 32% | 0 | 1,087,224 |

South Carolina Workers' Compensation Commission
Budget vs. Actual Report
FY 2023 As of 9/30/2022
25% of year elapsed

Fund 10010000 - GENERAL FUND - Operating Items

Insurance & Medical

| Commitment Item | Commitment Item Description | Current Budget | YTD Expenditures | % Used | Commitments | Remaining Balance |
|---------------------------------------|-----------------------------|----------------|------------------|------------|-------------|-------------------|
| 501058 | CLASSIFIED POS | 31,365 | 6,730 | 21% | | 24,635 |
| Total Insurance & Medical: | | 31,365 | 6,730 | 21% | | 24,635 |

Judicial

| Commitment Item | Commitment Item Description | Current Budget | YTD Expenditures | % Used | Commitments | Remaining Balance |
|------------------------|-----------------------------|----------------|------------------|--------|-------------|-------------------|
| 512001 | OTHER OPERATING | 31,158 | | | | |
| Total OTHER OPERATING: | | 31,158 | | | | 31,158 |
| Total Judicial: | | 31,158 | | | | 31,158 |

Employer Contributions

| Commitment Item | Commitment Item Description | Current Budget | YTD Expenditures | % Used | Commitments | Remaining Balance |
|--------------------------------------|-----------------------------|----------------|------------------|------------|-------------|-------------------|
| 513000 | EMPLOYER CONTRIB | 685,644 | 216,500 | 32% | | 469,144 |
| Total Employer Contributions: | | 685,644 | 216,500 | 32% | | 469,144 |

| | | | | | | |
|--|--|------------------|----------------|------------|----------|------------------|
| Total GENERAL FUND - Operating Items: | | 2,784,125 | 818,481 | 29% | 0 | 1,965,644 |
|--|--|------------------|----------------|------------|----------|------------------|

South Carolina Workers' Compensation Commission
Budget vs. Actual Report
FY 2023 As of 9/30/2022
25% of year elapsed

Fund 10010000 - GENERAL FUND - Special Items

IT System Project

| Commitment Item | Commitment Item Description | Current Budget | YTD Expenditures | % Used | Commitments | Remaining Balance |
|---------------------------------|-----------------------------|------------------|------------------|--------|-------------|-------------------|
| 561000 | Special Item | 1,695,084 | | | | 1,695,084 |
| Total IT System Project: | | 1,695,084 | | | | 1,695,084 |

| | | | | | | |
|--|--|------------------|--|--|--|------------------|
| Total GENERAL FUND - Special Items: | | 1,695,084 | | | | 1,695,084 |
|--|--|------------------|--|--|--|------------------|

South Carolina Workers' Compensation Commission
Budget vs. Actual Report
FY 2023 As of 9/30/2022
25% of year elapsed

Fund 10050023 - GF-NONRECUR APROP-23 - Special Items

IT System Project

| Commitment Item | Commitment Item Description | Current Budget | YTD Expenditures | % Used | Commitments | Remaining Balance |
|---------------------------------|-----------------------------|------------------|------------------|--------|-------------|-------------------|
| 561000 | Special Item | 5,000,000 | | | | 5,000,000 |
| Total IT System Project: | | 5,000,000 | | | | 5,000,000 |

| | | | | | | |
|---|--|------------------|--|--|--|------------------|
| Total GF-NONRECUR APROP-23 - Special | | 5,000,000 | | | | 5,000,000 |
|---|--|------------------|--|--|--|------------------|

South Carolina Workers' Compensation Commission
Budget vs. Actual Report
FY 2023 As of 9/30/2022
25% of year elapsed

Fund 38440000 - EARMARKED FUND

Administration

| Commitment Item | Commitment Item Description | Current Budget | YTD Expenditures | % Used | Commitments | Remaining Balance |
|-----------------|-----------------------------|----------------|------------------|--------|-------------|-------------------|
| 501058 | CLASSIFIED POS | 791,985 | 59,312 | 7% | | 732,673 |
| 501070 | OTH PERS SVC | 41,000 | | | | 41,000 |
| 512001 | OTHER OPERATING | 2,281,948 | | | | |
| 5020077240 | DP SERVICES – STATE | | 15,157 | | | |
| 5020080000 | FREIGHT EXPRESS DELV | | 8 | | | |
| 5021010004 | LEGAL SRV-WITNESS FE | | 22,344 | | | |
| 5021020000 | ATTORNEY FEES | | 113 | | | |
| 5021450000 | MOTOR VEHICLE SVCS | | 18 | | | |
| 5021479202 | CARPET MAINTENANCE | | 2,000 | | | |
| 5021490000 | AUDIT ACCT FINANCE | | 118 | | | |
| 5021540001 | PROF SRV-LANG INTER | | 44 | | | |
| 5021570000 | CONTRACTUAL SERVICES | | 7 | | | |
| 5024990000 | OTH CNT-NON-IT & REA | | 3,000 | | | |
| 5030010000 | OFFICE SUPPLIES | | 1,134 | | | |
| 5030010004 | SUBSCRIPTIONS | | 1,110 | | 9,111 | |
| 5030030000 | PRINTED ITEMS | | 248 | | | |
| 5030067101 | PRGM LIC - APP SUPP | | 6,479 | | 78,962 | |
| 5030067110 | EQUIP&SUPP- DATA NET | | 30 | | | |
| 5030067170 | EQUIP&SUPP- PRINT EU | | 109 | | 1,080 | |
| 5030070000 | POSTAGE | | 193 | | | |
| 5031479203 | JANITORIAL SUPPLIES | | 477 | | | |
| 5033140002 | CREDENTIAL SUPPLIES | | 30 | | | |
| 5040060000 | ST RENT-NON ST BLDG | | | | 6,087 | |
| 5040070000 | RENT-ST OWN RL PROP | | 120 | | | |
| 5040490003 | RENT PO BOX | | 1,646 | | | |
| 5040490009 | RENT PARKING | | 5,300 | | 15,930 | |
| 5041010000 | DUES & MEMBER FEES | | 420 | | | |
| 5041020000 | FEES AND FINES | | 130 | | | |
| 5041840000 | LEASE BLDG PRINCIPAL | | 33,647 | | 351,965 | |
| 5041850000 | LEASE BLDG INTEREST | | 905 | | 1,766 | |
| 5050010000 | IN ST-MEALS-NON-REP | | 175 | | | |
| 5050020000 | IN ST-LODGING | | 581 | | | |

South Carolina Workers' Compensation Commission
Budget vs. Actual Report
FY 2023 As of 9/30/2022
25% of year elapsed

Fund 38440000 - EARMARKED FUND

| | | | | | | |
|------------------------------|----------------------|------------------|----------------|-----------|----------------|------------------|
| 5050041000 | HR-IN ST-AUTO MILES | | 736 | | | |
| 5050060000 | IN ST-MISC TR EXP | | 144 | | | |
| 5050510000 | OUT ST-MEALS-NON-REP | | 220 | | | |
| 5050570000 | TRNG-OUT-ST REG FEE | | 2,625 | | | |
| 5051540000 | LEASED CAR-ST OWNED | | 9,729 | | | |
| Total OTHER OPERATING: | | 2,281,948 | 108,997 | 5% | 464,901 | 1,708,051 |
| Total Administration: | | 3,114,933 | 168,308 | 5% | 464,901 | 2,481,724 |

Inform. services

| Commitment Item | Commitment Item Description | Current Budget | YTD Expenditures | % Used | Commitments | Remaining Balance |
|--------------------------------|-----------------------------|----------------|------------------|--------|----------------|-------------------|
| 501058 | CLASSIFIED POS | | 96,140 | | | -96,140 |
| 5020077100 | SERVICES- APP SUP | | | | 73,008 | |
| 5020077220 | SERVICES- VOICENET | | 3,885 | | 23,760 | |
| 5021469316 | SECURITY ALARM SRVC | | 2,713 | | | |
| 5030067130 | EQUIP&SUPP- EUC | | 16,345 | | | |
| 5030067170 | EQUIP&SUPP- PRINT EU | | | | 3,660 | |
| 5040057000 | CONTINGNT RENT - IT | | 446 | | | |
| Total OTHER OPERATING: | | | 23,388 | | 100,428 | -123,816 |
| Total Inform. services: | | | 119,527 | | 100,428 | -219,955 |

Litigation - it proj

| Commitment Item | Commitment Item Description | Current Budget | YTD Expenditures | % Used | Commitments | Remaining Balance |
|------------------------------------|-----------------------------|----------------|------------------|--------|-------------|-------------------|
| 512001 | OTHER OPERATING | 35,000 | | | | |
| Total OTHER OPERATING: | | 35,000 | | | | 35,000 |
| Total Litigation - it proj: | | 35,000 | | | | 35,000 |

South Carolina Workers' Compensation Commission
Budget vs. Actual Report
FY 2023 As of 9/30/2022
25% of year elapsed

Fund 38440000 - EARMARKED FUND

Claims

| Commitment Item | Commitment Item Description | Current Budget | YTD Expenditures | % Used | Commitments | Remaining Balance |
|----------------------|-----------------------------|----------------|------------------|------------|-------------|-------------------|
| 501058 | CLASSIFIED POS | 280,850 | 62,946 | 22% | | 217,904 |
| 512001 | OTHER OPERATING | 19,700 | | | | |
| | Total OTHER OPERATING: | 19,700 | | | | 19,700 |
| Total Claims: | | 300,550 | 62,946 | 21% | | 237,604 |

Commissioners

| Commitment Item | Commitment Item Description | Current Budget | YTD Expenditures | % Used | Commitments | Remaining Balance |
|-----------------------------|-----------------------------|----------------|------------------|------------|--------------|-------------------|
| 501050 | TAXABLE SUBS | 70,000 | | | | 70,000 |
| 512001 | OTHER OPERATING | 230,700 | | | | |
| 5020120000 | CELLULAR PHONE SVCS | | 6,298 | | | |
| 5021010003 | LEGAL SRV-TRANSCRIPT | | 868 | | | |
| 5021010005 | LEGAL SRV-REPORTER | | 24,645 | | | |
| 5050010000 | IN ST-MEALS-NON-REP | | 1,000 | | 462 | |
| 5050020000 | IN ST-LODGING | | 3,845 | | 2,018 | |
| 5050031000 | HR-IN ST-AIR TRANS | | 197 | | | |
| 5050041000 | HR-IN ST-AUTO MILES | | 8,261 | | 1,329 | |
| 5050060000 | IN ST-MISC TR EXP | | 663 | | | |
| 5050080000 | IN ST-SUBSIST ALLOW | | 1,600 | | | |
| | Total OTHER OPERATING: | 230,700 | 47,376 | 21% | 3,809 | 179,516 |
| Total Commissioners: | | 300,700 | 47,376 | 16% | 3,809 | 249,516 |

South Carolina Workers' Compensation Commission
Budget vs. Actual Report
FY 2023 As of 9/30/2022
25% of year elapsed

Fund 38440000 - EARMARKED FUND

Insurance & Medical

| Commitment Item | Commitment Item Description | Current Budget | YTD Expenditures | % Used | Commitments | Remaining Balance |
|---------------------------------------|-----------------------------|----------------|------------------|------------|--------------|-------------------|
| 501058 | CLASSIFIED POS | 459,463 | 117,404 | 26% | | 342,059 |
| 501070 | OTH PERS SVC | 22,881 | 805 | 4% | | 22,076 |
| 512001 | OTHER OPERATING | 54,500 | | | | |
| 5020080000 | FREIGHT EXPRESS DELV | | 137 | | | |
| 5021540000 | NON-IT OTHER PRO SRV | | 520 | | | |
| 5024990000 | OTH CNT-NON-IT & REA | | 160 | | | |
| 5050010000 | IN ST-MEALS-NON-REP | | 563 | | 143 | |
| 5050020000 | IN ST-LODGING | | 2,712 | | 1,100 | |
| 5050031000 | HR-IN ST-AIR TRANS | | 1,533 | | | |
| 5050041000 | HR-IN ST-AUTO MILES | | 335 | | 422 | |
| 5050050000 | IN ST-OTHER TRANS | | 618 | | | |
| 5050060000 | IN ST-MISC TR EXP | | 310 | | | |
| 5050570000 | TRNG-OUT-ST REG FEE | | 45 | | | |
| Total OTHER OPERATING: | | 54,500 | 6,932 | 13% | 1,665 | 45,902 |
| Total Insurance & Medical: | | 536,844 | 125,142 | 23% | 1,665 | 410,037 |

Judicial

| Commitment Item | Commitment Item Description | Current Budget | YTD Expenditures | % Used | Commitments | Remaining Balance |
|------------------------|-----------------------------|----------------|------------------|------------|-------------|-------------------|
| 501058 | CLASSIFIED POS | 500,000 | 142,790 | 29% | | 357,210 |
| 501070 | OTH PERS SVC | 75,000 | 11,172 | 15% | | 63,828 |
| 512001 | OTHER OPERATING | 25,000 | | | | |
| 5021020000 | ATTORNEY FEES | | -36 | | | |
| 5030070000 | POSTAGE | | 4,000 | | | |
| 5050570000 | TRNG-OUT-ST REG FEE | | 45 | | | |
| Total OTHER OPERATING: | | 25,000 | 4,009 | 16% | 0 | 20,991 |
| Total Judicial: | | 600,000 | 157,971 | 26% | 0 | 442,029 |

South Carolina Workers' Compensation Commission
Budget vs. Actual Report
FY 2023 As of 9/30/2022
25% of year elapsed

Fund 38440000 - EARMARKED FUND

Employer Contributions

| Commitment Item | Commitment Item Description | Current Budget | YTD Expenditures | % Used | Commitments | Remaining Balance |
|--------------------------------------|-----------------------------|----------------|------------------|------------|-------------|-------------------|
| 513000 | EMPLOYER CONTRIB | 719,818 | 222,124 | 31% | 0 | 497,694 |
| Total Employer Contributions: | | 719,818 | 222,124 | 31% | 0 | 497,694 |

| | | | | | | |
|------------------------------|--|------------------|----------------|------------|----------------|------------------|
| Total EARMARKED FUND: | | 5,607,845 | 903,395 | 16% | 570,802 | 4,133,649 |
|------------------------------|--|------------------|----------------|------------|----------------|------------------|

**South Carolina Workers' Compensation Commission
Commitments
FY 2023 As of 9/30/2022**

Fund 38440000 - EARMARKED FUND

Administration

| Commitment Item | Commitment Item Description | Vendor | Commitment |
|------------------------------|-----------------------------|-----------------------------|----------------|
| 5030010004 | SUBSCRIPTIONS | WEST PUBLISHING CORPORATION | 9,111 |
| 5030067101 | PRGM LIC - APP SUPP | PROGRESS SOFTWARE CORP | 45,000 |
| 5030067101 | PRGM LIC - APP SUPP | WEST PUBLISHING CORPORATION | 33,962 |
| 5030067170 | EQUIP&SUPP- PRINT EU | FORMS & SUPPLY INC | 1,080 |
| 5040060000 | ST RENT-NON ST BLDG | GALIUM 1333 MAIN LLC | 6,087 |
| 5040490009 | RENT PARKING | REPUBLIC PARKING SYSTEM INC | 15,930 |
| 5041840000 | LEASE BLDG PRINCIPAL | GALIUM 1333 MAIN LLC | 351,965 |
| 5041850000 | LEASE BLDG INTEREST | GALIUM 1333 MAIN LLC | 1,766 |
| Total Administration: | | | 464,901 |

Inform. services

| Commitment Item | Commitment Item Description | Vendor | Commitment |
|--------------------------------|-----------------------------|-------------------------------|----------------|
| 5020077100 | SERVICES- APP SUP | INSURANCE SERVICES OFFICE INC | 62,640 |
| 5020077100 | SERVICES- APP SUP | PROGRESS SOFTWARE CORP | 10,368 |
| 5020077220 | SERVICES- VOICENET | NWN CORPORATION | 23,760 |
| 5030067170 | EQUIP&SUPP- PRINT EU | US INK AND TONER INC | 3,660 |
| Total Inform. services: | | | 100,428 |

| | | | |
|------------------------------|--|--|----------------|
| Total EARMARKED FUND: | | | 565,328 |
|------------------------------|--|--|----------------|

Any items with vendor "Not assigned" are pending financial adjustments. Any commitment on the Budget vs. Actual Report that is missing from this list is a travel commitment.