

## A G E N D A

### SOUTH CAROLINA WORKERS' COMPENSATION COMMISSION

1333 Main Street, 5<sup>th</sup> Floor  
Columbia, South Carolina 29201  
**November 22, 2021, 10:30 a.m.**

#### Meeting to be held in Hearing Room A

*This meeting agenda was posted prior to the meeting and proper advance notice was made to all concerned parties in compliance with requirements in the Freedom of Information Act.*

- |   |  |
|---|--|
| 1. CALL TO ORDER  | CHAIRMAN BECK  |
| 2. APPROVAL OF AGENDA OF BUSINESS MEETING<br>OF NOVEMBER 22, 2021   | CHAIRMAN BECK  |
| 3. APPROVAL OF MINUTES OF THE BUSINESS MEETING<br>OF OCTOBER 18, 2021 (Tab 1)   | CHAIRMAN BECK  |
| 4. GENERAL ANNOUNCEMENTS  | MR. CANNON   |
| 5. APPLICATIONS FOR APPROVAL TO SELF-INSURE (Tab 2)   | MR. DUCOTE   |
| 6. DEPARTMENT DIRECTORS' REPORTS<br>Human Resources (Tab 3)<br>Information Services (Tab 4)<br>Insurance and Medical Services (Tab 5)<br>Claims (Tab 6)<br>Judicial (Tab 7) | MS. WARD<br>MS. SPRANG<br>MR. DUCOTE<br>MS. SPANN<br>MS. BRACY |
| 7. DEPARTMENT OF VOCATIONAL REHABILITATION<br>Monthly Report (Tab 8)  | MR. CANNON   |
| 8. EXECUTIVE DIRECTOR'S REPORT (Tab 9)  | MR. CANNON   |
| 9. FINANCIAL REPORT (Tab 10)  | MR. CANNON   |
| 10. OLD BUSINESS  | CHAIRMAN BECK  |
| 11. NEW BUSINESS  | CHAIRMAN BECK  |
| 12. ADJOURNMENT   | CHAIRMAN BECK  |

|           |  |
|-----------|--|
| <b>1</b>  | <b>Approval of Minutes of the Business Meeting of October 18, 2021</b> |
| <b>2</b>  | <b>Self-Insurance</b>  |
| <b>3</b>  | <b>Human Resources</b>   |
| <b>4</b>  | <b>Information Services</b>  |
| <b>5</b>  | <b>Insurance and Medical Services</b>                                  |
| <b>6</b>  | <b>Claims</b>  |
| <b>7</b>  | <b>Judicial</b>  |
| <b>8</b>  | <b>Vocational Rehabilitation</b>                                       |
| <b>9</b>  | <b>Executive Director's Report</b>                                     |
| <b>10</b> | <b>Financial Report</b>  |

THE  
SOUTH CAROLINA WORKERS'  
COMPENSATION COMMISSION  
MINUTES OF THE BUSINESS MEETING

A Business Meeting of the South Carolina Workers' Compensation Commission was conducted on Monday, October 18, 2021 at 10:30 AM. The meeting agenda was posted prior to the meeting and proper advance notice was made in compliance with requirements in the Freedom of Information Act. The following Commissioners participated:

T. SCOTT BECK, CHAIRMAN  
SUSAN S. BARDEN, VICE CHAIR  
R. MICHAEL CAMPBELL, II, COMMISSIONER  
MELODY L. JAMES, COMMISSIONER  
GENE MCCASKILL, COMMISSIONER  
AISHA TAYLOR, COMMISSIONER  
AVERY B. WILKERSON, JR., COMMISSIONER

Also participating Gary Cannon Executive Director; Keith Roberts, General Counsel; Amy Bracy, Judicial Director; Wayne Ducote; Insurance & Medical Services, Claims Director; Self-Insurance Director; Bridget Ward, Human Resource Manager; Amy Proveaux, Executive Assistant. Attorney Cindy Dooley, Turner Padgett; and Bonnie Anzelmo, Injured Workers Advocates were present.

**AGENDA**

Commissioner Barden moved that the agenda be approved. Commissioner McCaskill seconded the motion, and the motion was approved.

**APPROVAL OF MINUTES – BUSINESS MEETING OF SEPTEMBER 20, 2021**

Commissioner Barden moved that the minutes of the Business Meeting of September 20, 2021, be approved. Commissioner Taylor seconded the motion, and the motion was approved.

**GENERAL ANNOUNCEMENTS**

No general announcements.

**APPLICATIONS FOR APPROVAL TO SELF-INSURE**

Self-insurance applications were presented by Wayne Ducote, Director of Insurance and Medical Services. Six (6) prospective members of two (2) funds was presented to the Commission for approval.

**New Applications:**

**Palmetto Timber Fund**  
Smokey Logging LLC

**South Carolina Home Builders SIF**  
Coastal Home Servicing LLC  
McCaskill Builders Inc.  
Oconee Outdoor Landscapes LLC  
Sain Homes LLC  
Webb Heating and Air Conditioning Inc.

After examination of the applications, it was determined that each complied with the Commission's requirements and each was recommended for approval. Commissioner Taylor made a motion to approve all members and funds application to self-insure, and Commissioner Wilkerson seconded the motion. The motion was approved.

## **DEPARTMENT DIRECTORS' REPORTS**

Each Department report was submitted in written form.

### **Human Resources**

Ms. Ward gave an overview of her report. Commissioner McCaskill inquired how many FTEs were in the vacancy pool. There were no further questions from the Commission.

### **Information Services**

Ms. Sprang presented an overview of her report and specifically addressed that all agency users will be switching from Pulse Secure to dual authentication through DUO authentication app. Ms. Sprang addressed the issues that have been experienced with agency phones and that the matters were being investigated and that time it is believed the issue has been resolved.

Commissioner Barden gave Ms. Sprang accolades for assisting in getting her laptop up and running.

### **Insurance and Medical Services**

Mr. Ducote verbally presented his report that was submitted in writing. There were no questions from the Commission.

### **Claims**

Ms. Spann verbally presented her report that was submitted in writing. There were no questions from the Commission.

### **Judicial**

Ms. Bracy verbally presented her report that was submitted in writing. There were no questions from the Commission

## **VOCATIONAL REHABILITATION**

The Vocational Rehabilitation report submitted in written form and there were no questions from the Commission.

## **EXECUTIVE DIRECTOR'S REPORT**

The Executive Director's report was submitted in written form. Mr. Cannon presented a few highlights from the report. There were no questions or comments from the Commission.

## **ADMINISTRATION – FINANCIAL REPORT**

Gary Cannon, Executive Director submitted the Financial Report to the Commission in written form. Mr. Cannon highlighted key data from the report.

## **OLD BUSINESS**

No old business.

## **NEW BUSINESS**

### **Recommendations from the MSPM Ad Hoc Committee**

Cindy Dooley, Chairperson for the MSPM Ad Hoc Committee presented the committee's recommendations on behalf of the committee. Mr. Cannon addressed that they are currently holding bi-weekly meetings with FairHealth, and they would take the recommendations and provide an analysis. After discussion Chairman Beck requested that all information be presented at the December Business Meeting.

A motion was made to by Commissioner Barden to accept the report from the Advisory Committee as information. Commissioner McCaskill seconded the motion, and the motion was approved.

### **Approval of the 2022 Commission Calendar**

Mr. Cannon presented the proposed 2022 calendar. After recommendations from the Commission, Mr. Cannon recommends moving the February Commission and Appellate hearings from February 14 and February 15, 2022 to February 22 and February 23, 2022.

Also, to follow the recommendations, the April 11 and April 12, 2022 dates were moved to April 19 and April 20, 2022.

Commissioner Barden made a motion to amend the 2022 calendar as the above presented by Mr. Cannon. Commissioner Taylor seconded the Motion, and the motion was approved.

Commissioner Barden made a motion to accept the amended 2022 Commissioner Taylor seconded the Motion and the motion was unanimously approved.

### **Request a mandate Form 18 Submissions**

Ms. Sprang presented her request that the Commission modify the Form 18 submission policy be all sub-annual reports will be accepted exclusively EDI, effective April 1, 2022. There was an extensive discussion.

A motion was made to carry the matter over until the next meeting by Commissioner Taylor. Commissioner James seconded the motion, and the motion was approved.

### **ADJOURNMENT**

Commissioner Barden made the motion to adjourn. Commissioner McCaskill seconded the motion, and the motion was approved.

The October 18, 2021, meeting of the South Carolina Workers' Compensation Commission adjourned at 11:55 a.m.

Reported: November 16, 2021  
Amy Proveaux  
Office of the Executive Director

# State of South Carolina

1333 Main Street, 5<sup>th</sup> Floor  
P.O. Box 1715  
Columbia, S.C. 29202-1715



TEL: (803) 737-5700  
FAX: (803) 737-5764

## *Workers' Compensation Commission*

**TO:** Gary Cannon

**FROM:** Bridget Ward

**DATE:** November 12, 2021

**SUBJECT: Monthly Human Resources Report for October 2021 Business Meeting**

This report summarizes the activities of Human Resources during the period of October 1, 2021 through October 31, 2021.

At the end of October, the Commission had 47 full time employees, one part-time employee, one temporary legal intern and one extern.

- **New Hires:** One
- **Separations or Retirements:** Three
- **FMLA Leaves:** None

In the month of October 13 SCEIS personnel transactions and 15 SCEIS time/leave transactions were processed. Detailed payroll and time reports were run as scheduled and any issues that arose were corrected with the collaborative effort of either the SCIES team or the Comptroller General Office. HR attended a virtual DSHR Advisory meeting along with a virtual Performance Learning and Consortium that was hosted by the Department of Administration. HR also participated in an employer advisory webinar presented by PEBA for the 2022 open enrollment.

Eleven "All Employee" emails were sent by HR during the month of October, and 10 travel reports were processed. 2022 open enrollment with PEBA was highlighted and promoted the entire month of October. HR responded to leave and benefit questions and made changes online or by paper application as needed or requested. In collaboration with the SC Lottery, an onsite flu shot event was scheduled with Prisma Health through our PEBA contacts and a total of 26 employees participated (25 from the Commission and 5 from the Lottery). HR has scheduled a Worksite Health Screening event for March 8 for all employees and the SC Lottery has also be invited to participate. HR received and reviewed 1076 emails and sent 386 emails. As requested by SCHAC, the collective data from the previous two bi-annual reports were summarized and submitted for their annual report to the General Assembly.

There were two building issues for the month of October, and both were resolved in a timely manner. The sound proofing of the space between the Commission's offices and the Jeffcoat law firm has been completed. Two parking issues occurred during October and there were no assignment updates made with Republic Parking.

Since March of 2020, the division of State Human Resources (DSHR) has required that all agencies report their attendance numbers. Opposed to daily, agencies are now only required to report numbers once a

week. HR has been reporting who was working onsite, telecommuting, and taking leave. Our numbers are reported every Wednesday to DSHR, and we no longer report on new COVID cases. There were no new COVID cases this in the office for the month of October.

We received notice in October that the Commission will be losing a Records Analyst who will be leaving November 1. The Commission does not plan to fill this position at this time but made the decision to post the previously vacated Judicial Administrative Assistant position after reclassing it to a Program Assistant. The new classification will better suit the job description and duties. The Program Assistant position was posted in October and interviews will be conducted for a replacement in November. We also lost an Administrative Coordinator II. The position was also posted in October and interviews will be conducted for a replacement in November. One of the two Program Coordinator I positions recently vacated in IMS was filled and the employee started on October 25. More interviews for the second Program Coordinator I position are scheduled for November. The Program Coordinator II position for Self-Insurance was posted and filled and the employee will start November 8.



# State of South Carolina

1333 Main St, Suite 500  
P.O. Box 1715  
Columbia, S.C. 29202-1715



Tel: (803) 737-5700  
Fax: (803) 737-1258  
www.wcc.sc.gov

## Workers' Compensation Commission

---

To: Gary Cannon  
SCWCC Executive Director  
From: Sandee Sprang, IT Director  
Date: November 12, 2021  
Subject: IT Department October 2021 Full Commission Report

---

This report summarizes the activities and accomplishments for projects and initiatives in the IT department during October 2021.

### **I. Systems Operations, Maintenance and Support**

#### EDI

The team worked with multiple EDI Trading Partners identify specific reasons for data rejections on Claims and POC submissions. We continue our participation in IAIABC conference calls for: Jurisdiction Only meetings, EDI Claims Committee and the POC 3.0 taskforces.

#### Progress

Duane provided standard support for invoice and check reconciliation issues to end users. The new Progress development environment and production environment are both operational. The migration to version 12 for all agency users will be completed over the course of the next 6 weeks.

#### Systems Support

Jason continues to deploy the new laptops that includes an additional security protocol requiring a 6-digit pin at startup.

#### Security

The implementation of the DUO two-factor security for remote access to our network was implemented without issue. As we approach the holidays, breaches and phishing schemes become far more prevalent, so the IT team asks everyone to please be cautious of opening email, opening attachments, and clicking on links that are even slightly suspicious.

#### Reporting

The IT team generated several Open Claims reports and Outstanding Carrier Fines for external stakeholders and provided Compliance reports for internal staff.

#### Hardware

Jason is tracking the status of hardware related to the upfit of Hearing Room A and B; supply chain issues are constraining the start date for this project.

## **II. Projects, Enhancements and Development**

### Legacy Modernization

The EDI RFP was delivered to SFAA for their review. The IT Plan for the system was approved as was a 7-year contract term instead of the standard 5-year term.

The IT team continues their work in developing the detailed requirements and specifications for the Claims Management RFP solicitation. The IT team has processed over 6500 user stories all of which will be included in this solicitation. It will also have a 7-year term contract. This solicitation will be issued by SFAA in the next few weeks.

# State of South Carolina



## Workers' Compensation Commission

---

**To:** Mr. Gary Cannon  
SCWCC Executive Director

**From:** Wayne Ducote, Jr.  
IMS Director

**Date:** 18-Nov-21

**Subj:** Insurance and Medical Services Department  
October 2021 Full Commission Report

---

Please find attached information provided to summarize the status and workflow of initiatives currently underway within the Insurance and Medical Services (IMS) Department.

In addition to the statistical data provided, please be advised of the following:

- |                     |  |
|---------------------|--|
| Compliance Division | <ol style="list-style-type: none"><li>1. Reviewing revenue metrics / projections.</li><li>2. Working with staff to review workflow processes and additional training opportunities.</li><li>3. Continuing to explore outreach opportunities with stakeholders.</li></ol> |
| Coverage Division   | <ol style="list-style-type: none"><li>1. Working with staff to review workflow processes and explore opportunities to enhance service provision.</li><li>2. Lapse in Coverage: 65 new registrants; 0 notifications sent.</li></ol>                                       |
| Medical Services    | <ol style="list-style-type: none"><li>1. No new medical bill reviewer certifications were completed and processing five medical bill reviewer certifications and renewals.</li><li>2. Three medical bill pricing reviews were done in the month of October.</li></ol>    |

While this summary is in no way all-inclusive, it may serve to assist you and our Commissioners in understanding the key initiatives underway in the IMS Department and provide measures by which the Department's effectiveness can be gauged. IMS welcomes any guidance that you and/or our Commissioners can provide concerning our performance and direction.

**Employer Rule to Show Cause Hearings and Compliance Activity**

The Compliance Division docketed **1** new RTSC cases and **3** total RTSC cases in the month of October. And, compelled **55** South Carolina employers to come into compliance with the Act. Year to date, **7** new RTSC cases and **12** total RTSC cases have been docketed.

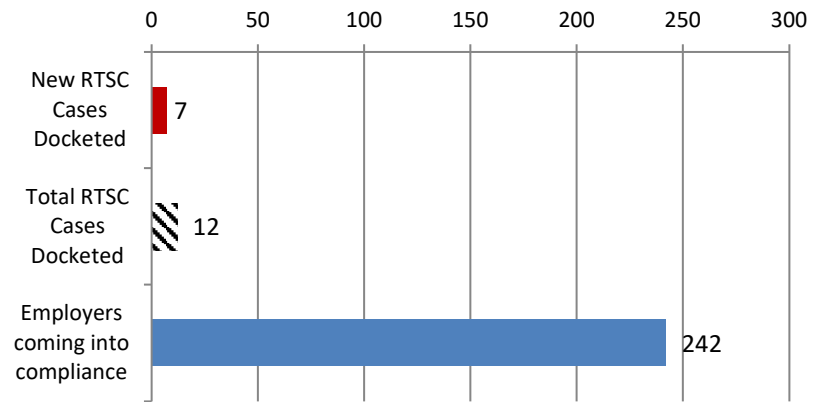
**Employers Obtaining Coverage**

Year to date, the Compliance Division has compelled **242** South Carolina employers to come into compliance with the Act. In so doing, approximately **1,936** previously uninsured workers are now properly covered.

**Penalties Waived**

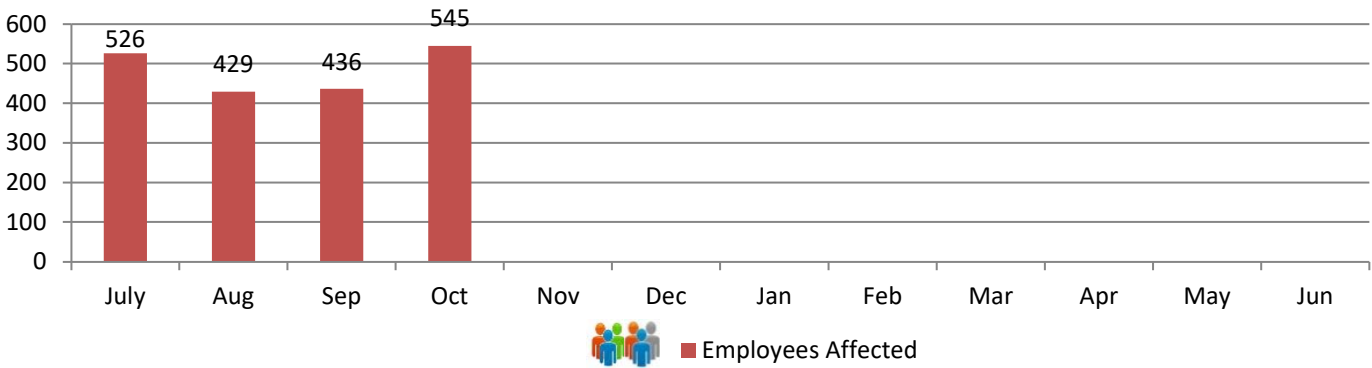
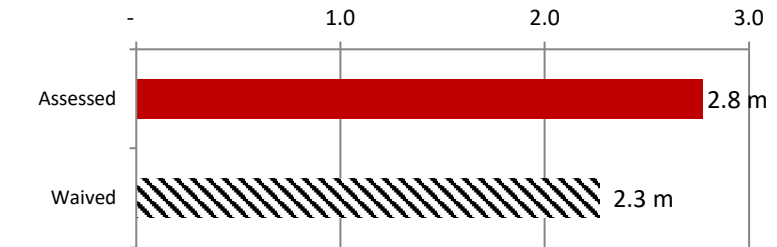
Although the Division has assessed \$2.4 m in fines this fiscal year, \$1.9 m have been waived or rescinded as employers have either obtained insurance coverage or were found not to be subject to the Act.

**RTSC and Compliance Activity**



**Fines and Penalties**

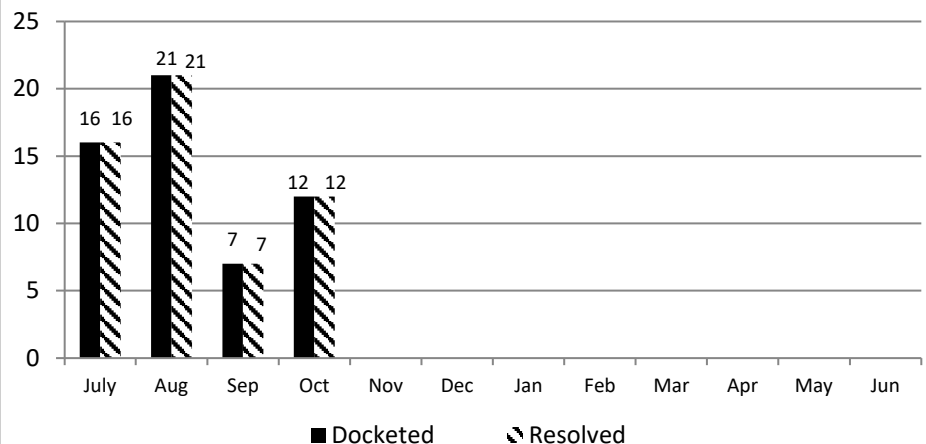
Millions



**Carrier Rule to Show Cause Hearings**

The Compliance Division manages the Rule to Show Cause process involving the recovery of outstanding carrier fines and penalties. In the month of October 2021, 12 carrier RTSC cases were docketed; 12 cases were resolved for a total of \$5,000.

Year to date, a total of 56 carrier RTSC cases have been docketed, 56 cases for a total of \$26,650 have been resolved.

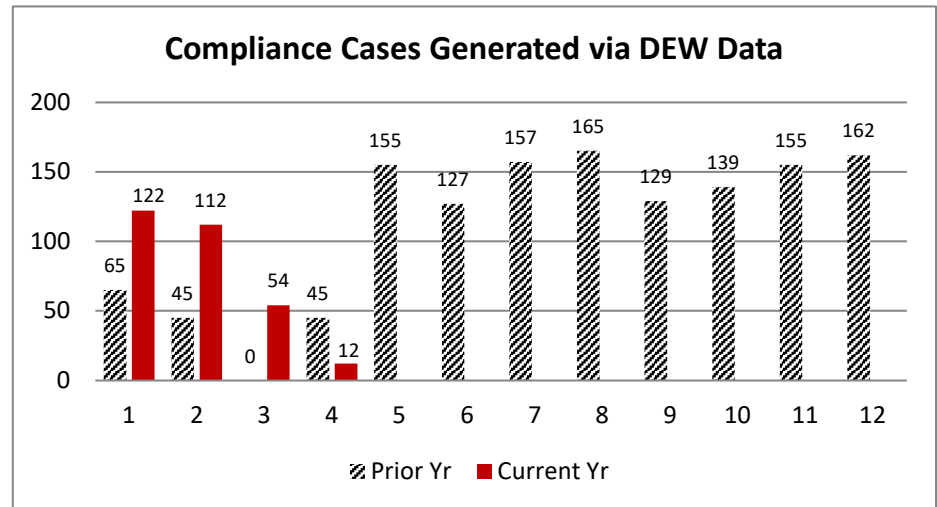
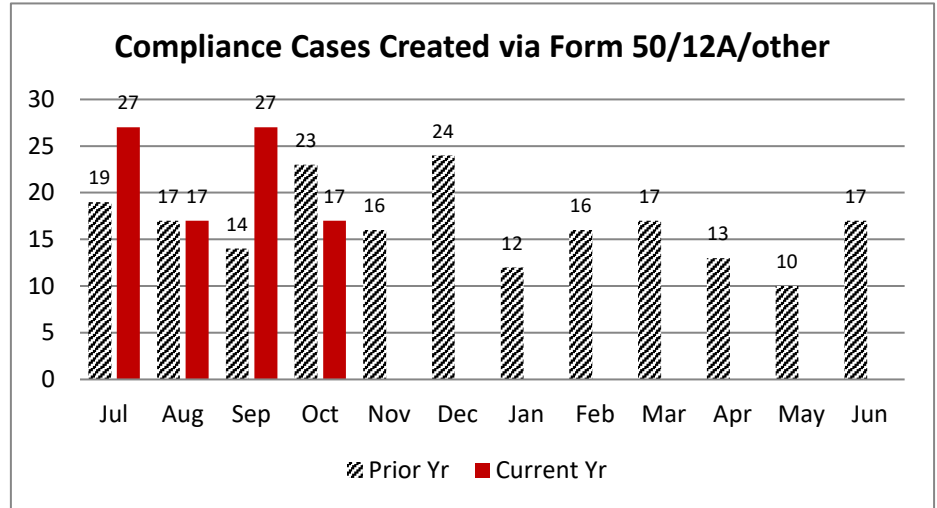


In October 2021, 17 compliance files were created from the combined filings of Form 50's, 12A's, and stakeholder reporting involving uninsured employers.

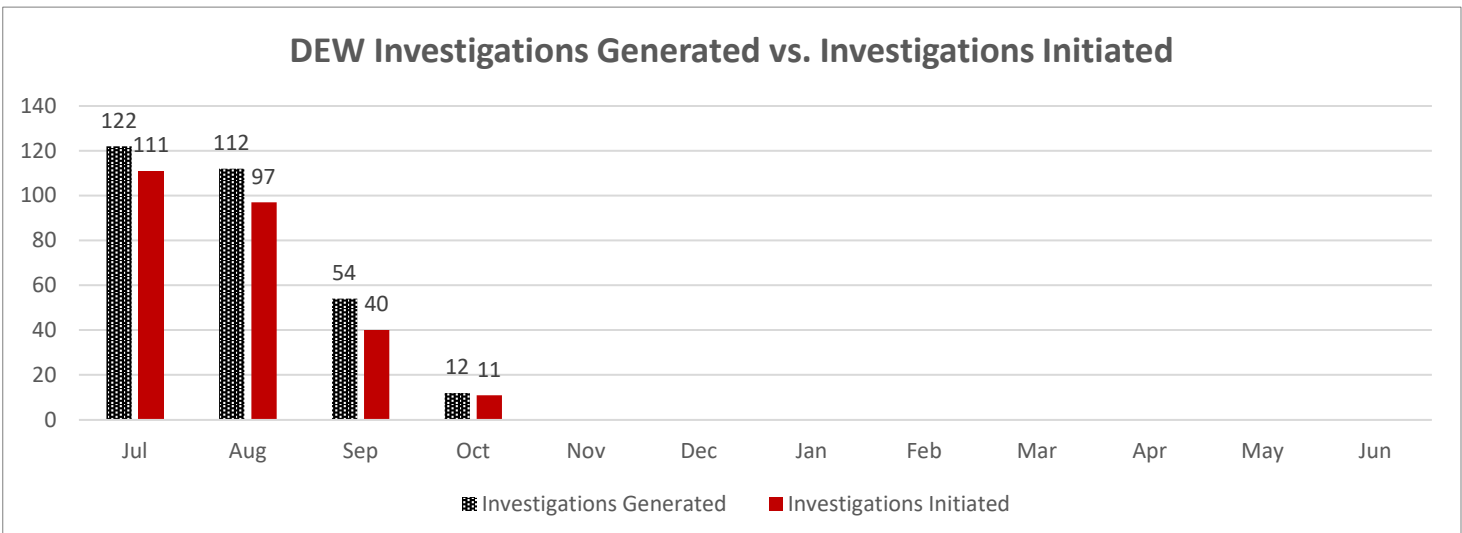
YTD vs. Prior Year total (198): 44%  
 Oct 2020 to Oct 2021: 74%  
 Current Yr End trend: 133% of 2020-2021  
 YTD 2021-2022 v. YTD 2020-2021: 121%

In October 2021, 12 compliance files were generated from the DEW data process.

YTD vs. Prior Year total (1,344): 22%  
 Oct 2020 to Oct 2021: 9188%  
 Current Yr End trend: 67% of 2019-2020  
 YTD 2021-2022 v. YTD 2020-2021: 194%



The DEW Data Pool is determined by the total number of potential, non-compliant employers who report wages to DEW with at least 4 employees and who's FEIN does not match with any coverage records in the Commission's coverage database. The investigations generated is the number of compliance investigations generated from the pool. The investigations initiated is the number of compliance investigations initiated from those that were generated.



**Carryover Caseload:**

The Compliance Division closed October 2021 with 203 cases active, compared to an active caseload of 174 at the close of October 2020.

**Cases Resolved:**

For the month of October 2021, Compliance Division staff closed-out 106 cases.

**Compliance Fines:**

In October 2021, the Compliance Division collected \$69,835 in fines and penalties. Year to Date, the Compliance Division has collected \$330,658 in fines and penalties.

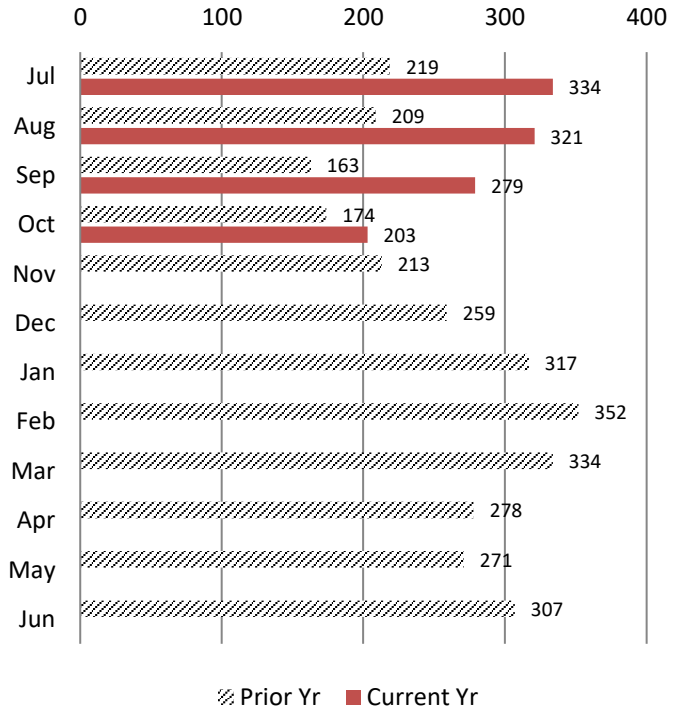
Year to Date vs Prior Year Total (\$785,893): 42%

Oct 2020 vs. Oct 2021: 152%

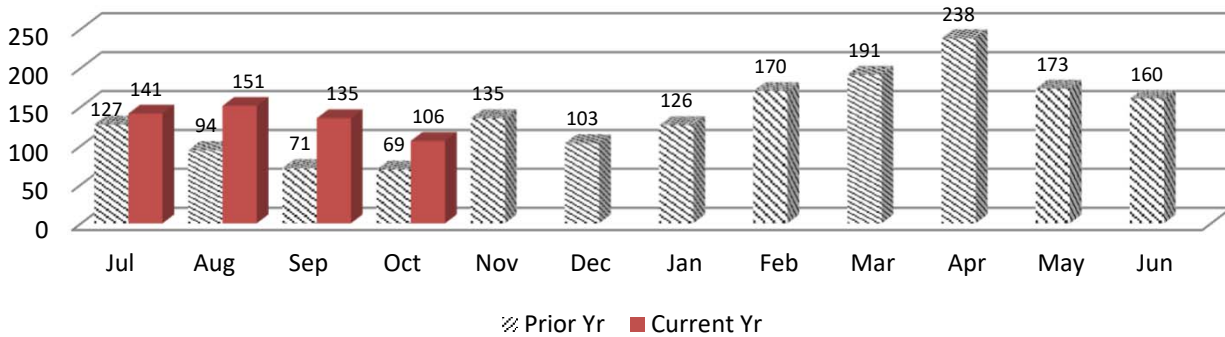
Current Year End trend is 126% of 2020-2021

YTD 2020-21 (Oct - June) vs YTD 2021-2022: 137%

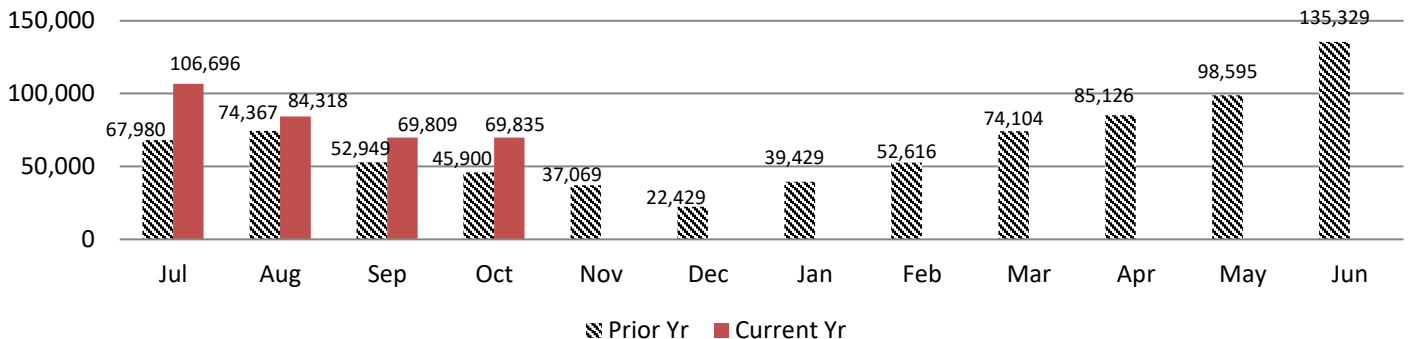
**Caseload Pending v. Prior Year**



**Cases Resolved v. Prior Year**



**Compliance Fines Collected v. Prior Year**

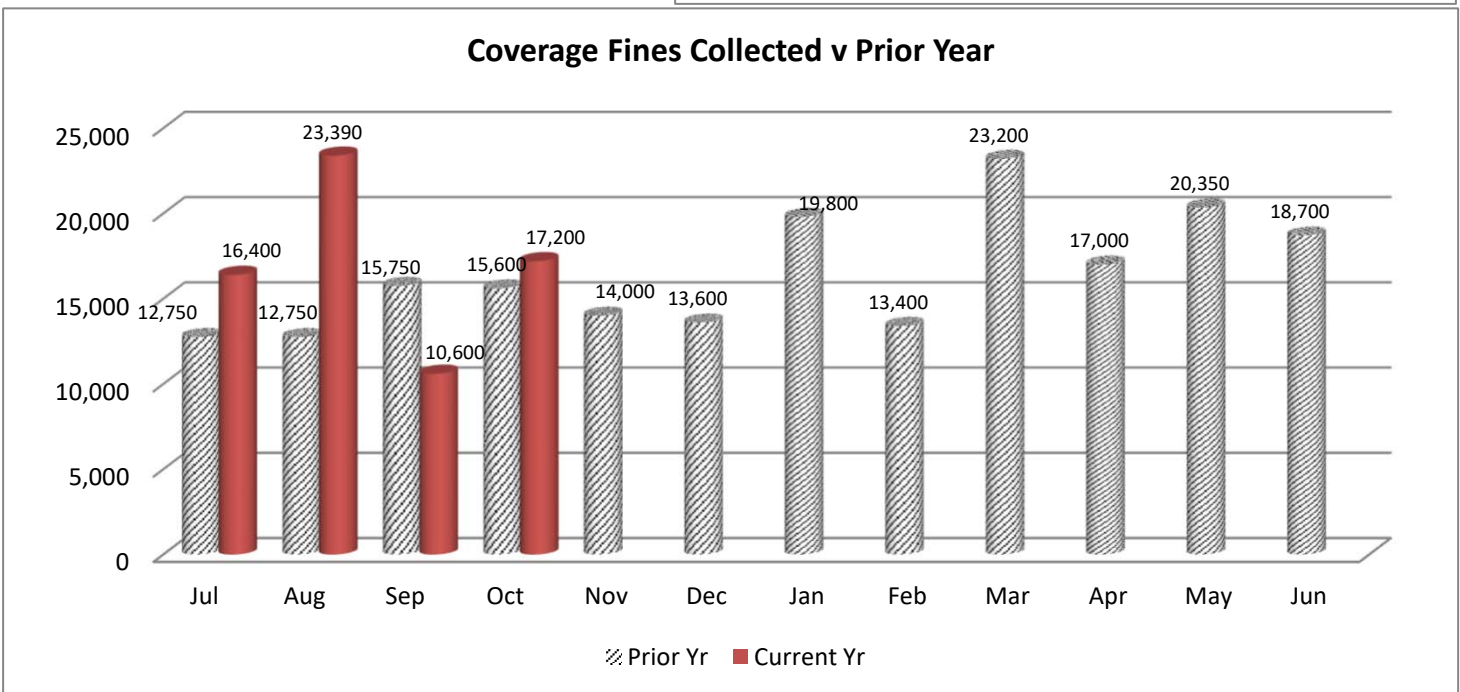
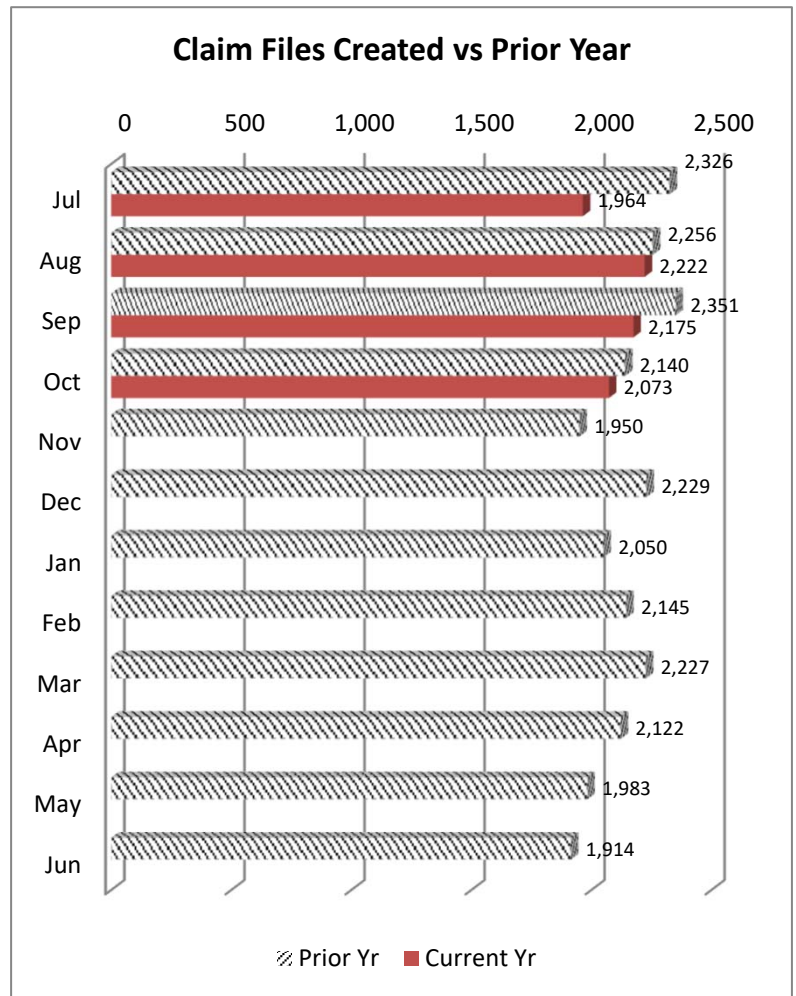


**WCC Claim Files:**

In October 2021, the Coverage Division received a total of 2,073 WCC Claim files. Of these, 1,780 were created through proper carrier filing of a 12A, and 293 were generated as a result of a Form 50 claim filing. Year to Date 8,434 Claim files have been created which is 33% of claim file volume prior year (25,693).

**Coverage Fines:**

The Coverage Division collected \$17,200 in fine revenue in October 2021, as compared to \$15,600 in Coverage fines/penalties accrued during October 2020. Year on Year, Coverage fines are at 34% of collections for prior year.



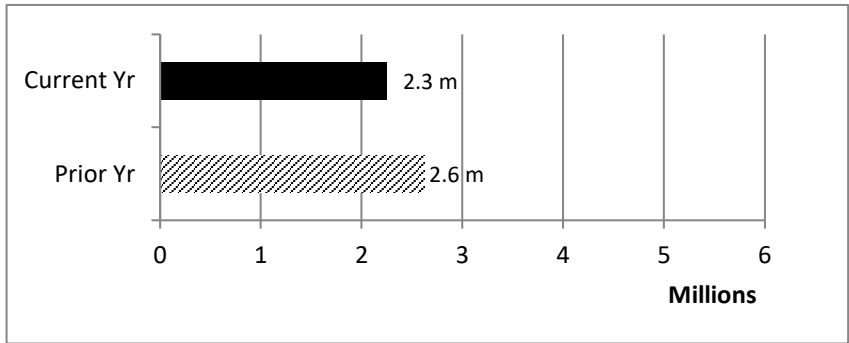
**IMS SELF INSURANCE DIVISION**

October 2021

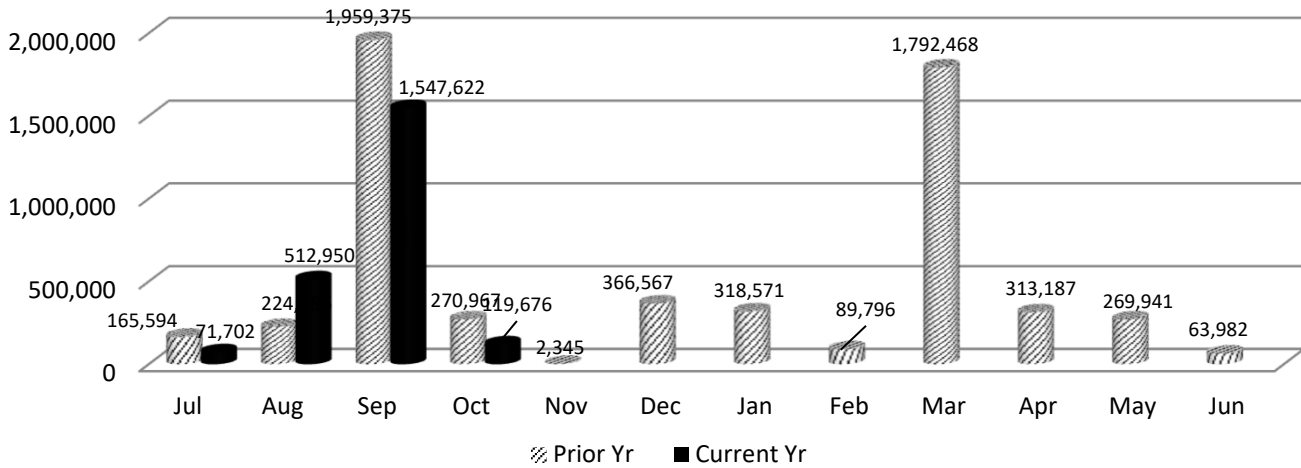
During the month of October 2021, the Self Insurance Division:

- \* collected \$1,547,622 in self-insurance tax.
- \* added 6 new self-insurers.
- \* conducted 4 Self Insurance audits.

Year to Date, Self Insurance tax revenue is trending at 86% of prior year and 12 Self Insurance audits have been completed.



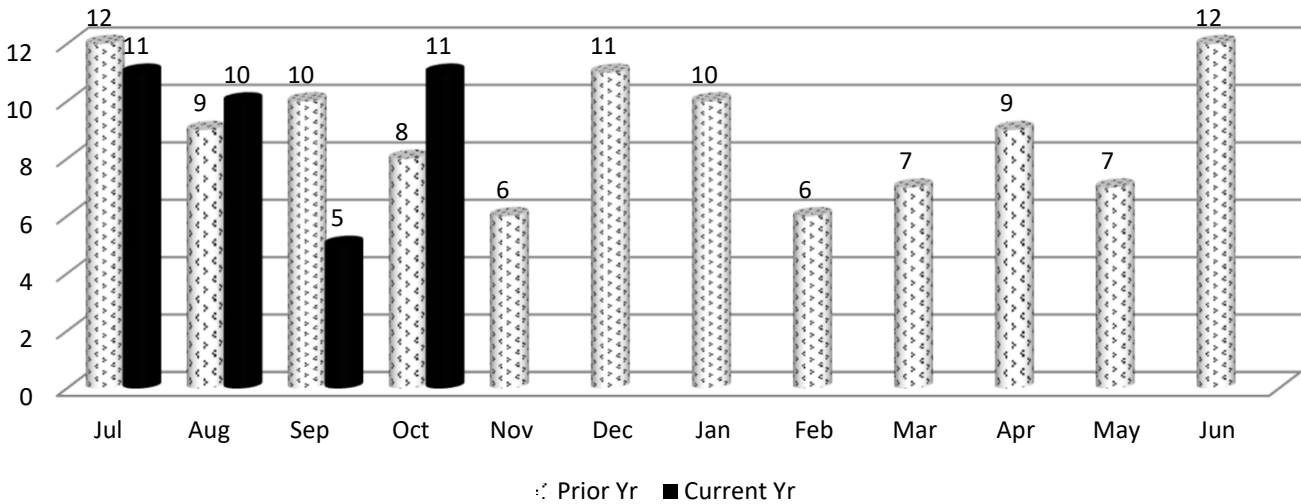
**Self Insurance Tax Collections v. Prior Year**



**IMS MEDICAL SERVICES DIVISION**

In October 2021, the Medical Services Division began the month with 5 bills pending review, received an additional 15 bills for review, conducted 9 bill reviews and ended the month with 11 bills pending.

**Medical Bills Pending Review v. Prior Year**





# State of South Carolina

1333 Main Street, 5<sup>th</sup> Floor  
P.O. Box 1715  
Columbia, S.C. 29202-1715



TEL: (803) 737-5700  
www.wcc.sc.gov

## *Workers' Compensation Commission* MEMORANDUM

To: Gary Cannon, Executive Director  
From: Sonji Spann, Claims Director  
Date: November 9, 2021  
Re: Claims Department November 2021 Full Commission Report

Below is the Claims Department's report of the activities for the month October 31, 2021. Totals for the fiscal year three-month period can be found on the attached Excel document.

|   |                 |
|---|-----------------|
| <b>Forms Processed</b>                  | <b>13,330</b>   |
| <b>Closed</b>                           | <b>2,136</b>    |
| <b>Reviewed</b>                         | <b>2,261</b>    |
| <b>Revenue</b>                          | <b>\$33,400</b> |
| <b>Total Fines Assessed</b>             | <b>184</b>      |
| <b>Form 18 Fines</b>                    | <b>184</b>      |
| <b>Form 18 - EDI</b>                    | <b>2,549</b>    |
| <b>Emailed - Form 18s</b>               | <b>1,481</b>    |
| <b>USPS - Form 18s</b>                  |                 |
| <b>Form 61 Received</b>                 | <b>656</b>      |
| <b>Form 61 Approved</b>                 | <b>628</b>      |
| <b>Third Party Settlements Received</b> | <b>17</b>       |
| <b>Third Party Settlement Processed</b> | <b>17</b>       |

## Claims Department Statistical Report Statistics For FY21-22

Period ending , October 30, 2021

| Claims Services                | July     | August   | Sept     | Oct      | FY21-22<br>Total | FY20-21<br>Total | % Chg<br>same<br>period<br>FY20-21 |
|--------------------------------|----------|----------|----------|----------|------------------|------------------|------------------------------------|
| <b>Forms 15-I</b>              | 1,023    | 1,157    | 1,153    | 1,077    | 4,410            | 5,109            | -14%                               |
| <b>Forms 15-II/Forms 17</b>    | 933      | 1,028    | 922      | 970      | 3,853            | 4,264            | -10%                               |
| <b>Forms 16 for PP/Disf</b>    | 187      | 216      | 215      | 236      | 854              | 911              | -6%                                |
| <b>Forms 18</b>                | 4,325    | 4,511    | 4,491    | 4,073    | 17,400           | 17,987           | 97%                                |
| <b>Forms 20</b>                | 546      | 591      | 559      | 589      | 2,285            | 2,407            | 95%                                |
| <b>Form 50 Claims Only</b>     | 291      | 316      | 241      | 286      | 1,134            | 1,186            | 5%                                 |
| <b>Form 61</b>                 | 652      | 655      | 607      | 656      | 2,570            | 2,976            | -14%                               |
| <b>Letters of Rep</b>          | 251      | 258      | 219      | 201      | 929              | 940              | -1%                                |
| <b>Clinchers</b>               | 831      | 744      | 818      | 786      | 3,179            | 3,785            | -16%                               |
| <b>Third Party Settlements</b> | 14       | 24       | 19       | 17       | 74               | 55               | 35%                                |
| <b>SSA Requests for Info</b>   | 64       | 49       | 35       | 42       | 190              | 164              | 16%                                |
| <b>Cases Closed</b>            | 2,028    | 2,233    | 2,275    | 2,136    | 8,672            | 10,750           | -19%                               |
| <b>Cases Reviewed</b>          | 2,849    | 3,742    | 2,694    | 2,261    | 11,546           | 14,186           | -19%                               |
|                                |          |          |          |          | -                | -                |                                    |
|                                |          |          |          |          | -                | -                |                                    |
| <b>Total Fines Assessed</b>    | 297      | 338      | 221      | 184      | 1,040            | 1,173            |                                    |
| <b>Form 18 Fines</b>           | 331      | 321      | 211      | 184      | 1,047            | 1,074            |                                    |
| <b>Total Amt Paid</b>          | \$38,650 | \$60,800 | \$59,450 | \$33,400 | \$ 192,300       | \$ 136,700       | 41%                                |

State of South Carolina



1333 Main Street  
P.O. Box 1715  
Columbia, S.C. 29202-1715

Tel: (803) 737-5700  
Fax: (803) 737-1234  
[www.wcc.sc.gov](http://www.wcc.sc.gov)

**Workers' Compensation Commission**

November 16, 2021

**To:** Gary Cannon  
Executive Director

**From:** Amy A. Bracy  
Judicial Director

**RE: Monthly Judicial Report for October 2021**

During the month of October, the Judicial Department processed seven hundred seventy-eight (778) requests for hearings (claimant and defense pleadings), one hundred seven (107) Motions and one hundred forty-five (145) clincher conference requests that were sent to the Jurisdictional Commissioners.

There were sixty-seven (67) Single Commissioner Hearings conducted during the past month, thirteen (13) pre-hearing conferences held, and seven (7) Full Commission hearings held. A total of four hundred four (404) Orders (Single Commissioner Orders, Consent Orders and Administrative Orders) were served at the single Commissioner level, forty (40) of those were Decision and Orders that resulted from hearings that went on the record and one hundred three (103) were Motion Orders that were a result of Motions ruled upon by Commissioners.

The Informal Conference system conducted two hundred fifty-four (254) hearings during the last month.

There were twenty-seven (27) regulatory mediations scheduled and fifty-five (55) requested mediations. The Judicial Department was notified of forty-seven (47) matters resolved in mediation, with the receipt of Forms 70.

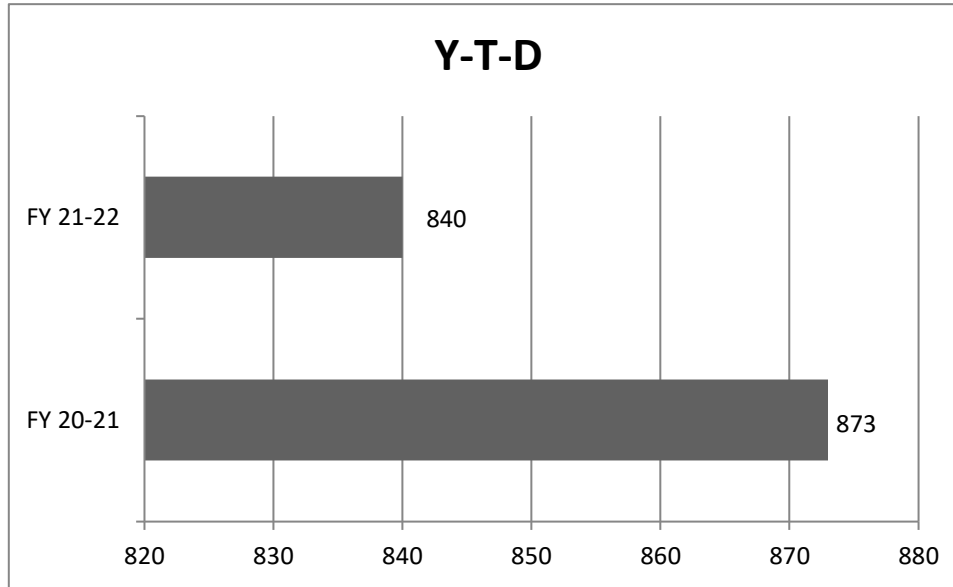
In the month of October, Judicial received zero (0) Notice of Intent to Appeal to the Court of Appeals and zero (0) to the Circuit Court.

**Judicial Department Statistcal Report  
Statistics For Fiscal Year 2021-2022**

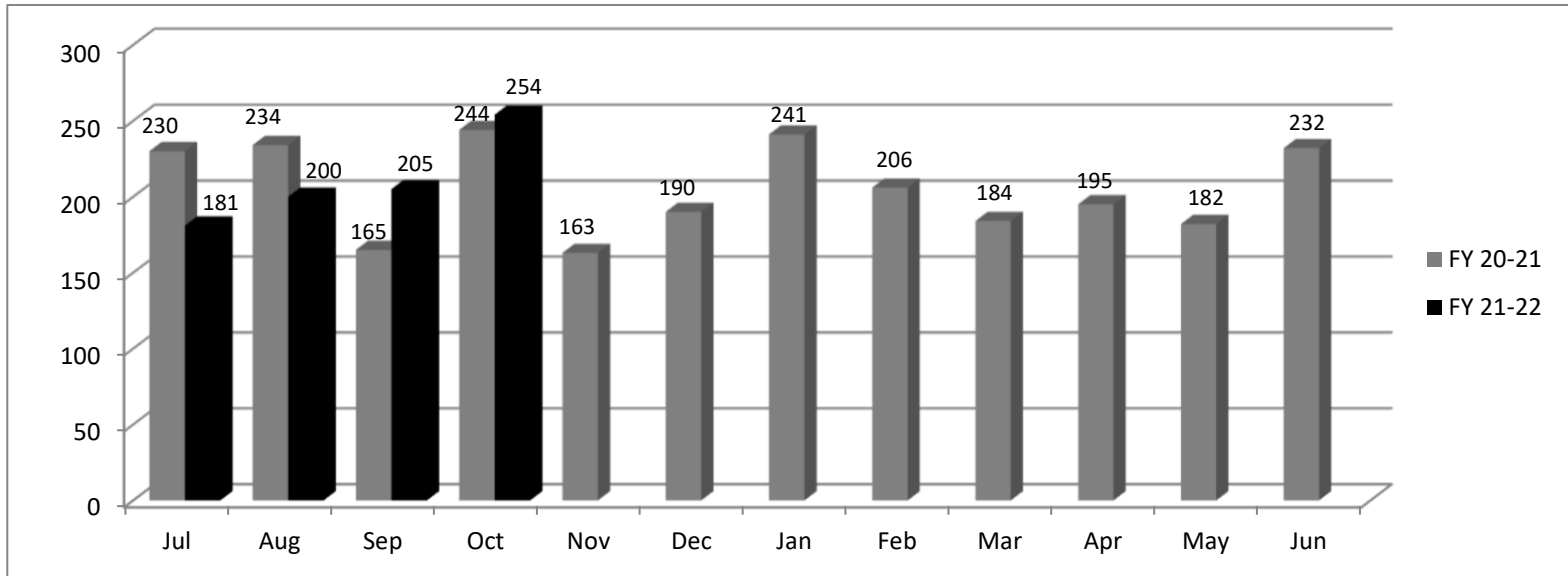
|                                    | July | Aug | Sept | Oct | Nov | Totals<br>YTD<br>2021-2022 | Totals<br>YTD<br>2020-2021 | % Diff from<br>prev year | YTD Diff +<br>(-) | FY21-22<br>Mth Avg | FY20-21<br>Mth Avg |
|------------------------------------|------|-----|------|-----|-----|----------------------------|----------------------------|--------------------------|-------------------|--------------------|--------------------|
| Claimant Pleadings                 | 484  | 560 | 496  | 512 |     | 2,052                      | 2268                       | -10%                     | (216)             | 684                | 756                |
| Defense Response to Pleadings      | 409  | 406 | 466  | 376 |     | 1,657                      | 1842                       | -10%                     | (185)             | 552                | 614                |
| Defense Pleadings                  | 287  | 285 | 310  | 266 |     | 1,148                      | 1212                       | -5%                      | (64)              | 383                | 404                |
| Motions                            | 140  | 120 | 109  | 107 |     | 476                        | 577                        | -18%                     | (101)             | 159                | 192                |
| Form 30                            | 14   | 21  | 6    | 9   |     | 50                         | 39                         | 28%                      | 11                | 17                 | 13                 |
| FC Hearings Held                   | 7    | 8   | 8    | 7   |     | 30                         | 15                         | 100%                     | 15                | 10                 | 5                  |
| FC Orders Served                   | 14   | 14  | 11   | 8   |     | 47                         | 36                         | 31%                      | 11                | 16                 | 12                 |
| Single Comm. Hearings Held         | 40   | 61  | 52   | 67  |     | 220                        | 295                        | -25%                     | (75)              | 73                 | 98                 |
| Single Comm. Orders Served         | 215  | 189 | 204  | 154 |     | 762                        | 779                        | -2%                      | (17)              | 254                | 260                |
| Single Comm. Pre-Hearing Conf Held | 14   | 11  | 26   | 13  |     | 64                         | 111                        | -42%                     | (47)              | 21                 | 37                 |
| Consent Orders                     | 211  | 218 | 256  | 229 |     | 914                        | 1119                       | -18%                     | (205)             | 305                | 373                |
| Adminstrative Orders               | 4    | 19  | 12   | 21  |     | 56                         | 55                         | 2%                       | 1                 | 19                 | 18                 |
| Clincher Conference Requested      | 109  | 149 | 154  | 145 |     | 557                        | 582                        | -4%                      | (25)              | 186                | 194                |
| Informal Conference Requested      | 228  | 278 | 274  | 247 |     | 1,027                      | 1140                       | -10%                     | (113)             | 342                | 380                |
| Informal Conference Conducted      | 181  | 200 | 205  | 254 |     | 840                        | 873                        | -4%                      | (33)              | 280                | 291                |
| Regulatory Mediations              | 26   | 21  | 32   | 27  |     | 106                        | 147                        | -28%                     | (41)              | 35                 | 49                 |
| Requested Mediations               | 65   | 65  | 52   | 55  |     | 237                        | 219                        | 8%                       | 18                | 79                 | 73                 |
| Ordered Mediations                 | 0    | 0   | 0    | 0   |     | 0                          | 3                          | -100%                    | (3)               | 0                  | 1                  |
| Mediation Resolved                 | 44   | 63  | 59   | 47  |     | 213                        | 204                        | 4%                       | 9                 | 71                 | 68                 |
| Mediation Impasse                  | 22   | 19  | 11   | 14  |     | 66                         | 51                         | 29%                      | 15                | 22                 | 17                 |
| Mediation Held; Issues Pending     | 0    | 2   | 2    | 0   |     | 4                          | 2                          | 0%                       | 2                 | 1                  | 1                  |
| Claim Settled Prior to Mediation   | 7    | 14  | 14   | 9   |     | 44                         | 32                         | 38%                      | 12                | 15                 | 11                 |
| Mediation Not Complete in 60 days  | 4    | 1   | 2    | 1   |     | 8                          | 6                          | 33%                      | 2                 | 3                  | 2                  |

**Informal Conf. Conducted**

|              | FY 20-21    | FY 21-22   |
|--------------|-------------|------------|
| Jul          | 230         | 181        |
| Aug          | 234         | 200        |
| Sep          | 165         | 205        |
| Oct          | 244         | 254        |
| Nov          | 163         |            |
| Dec          | 190         |            |
| Jan          | 241         |            |
| Feb          | 206         |            |
| Mar          | 184         |            |
| Apr          | 195         |            |
| May          | 182         |            |
| Jun          | 232         |            |
| <b>Total</b> | <b>2466</b> | <b>840</b> |

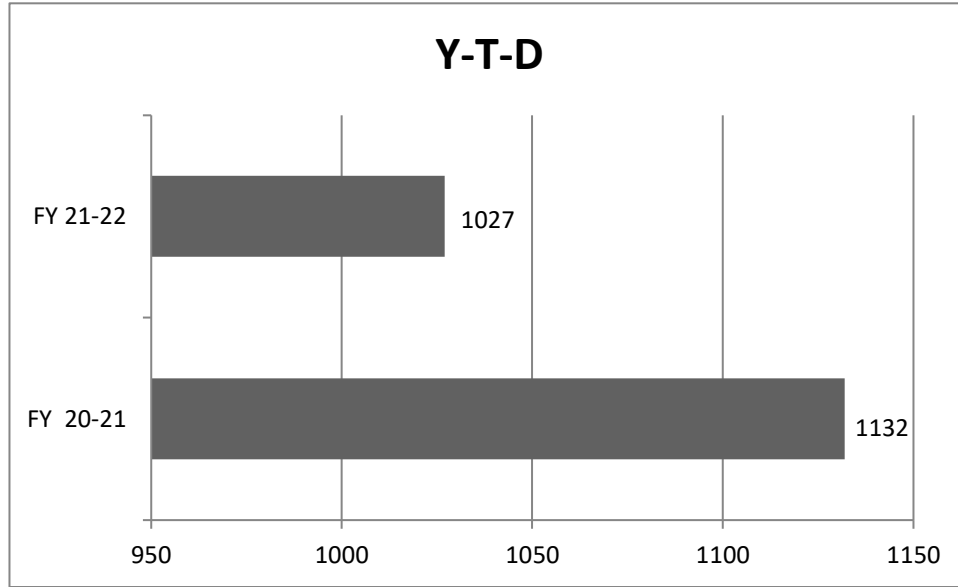


| Y-T-D | FY 20-21   | FY 21-22   |
|-------|------------|------------|
|       | <b>873</b> | <b>840</b> |

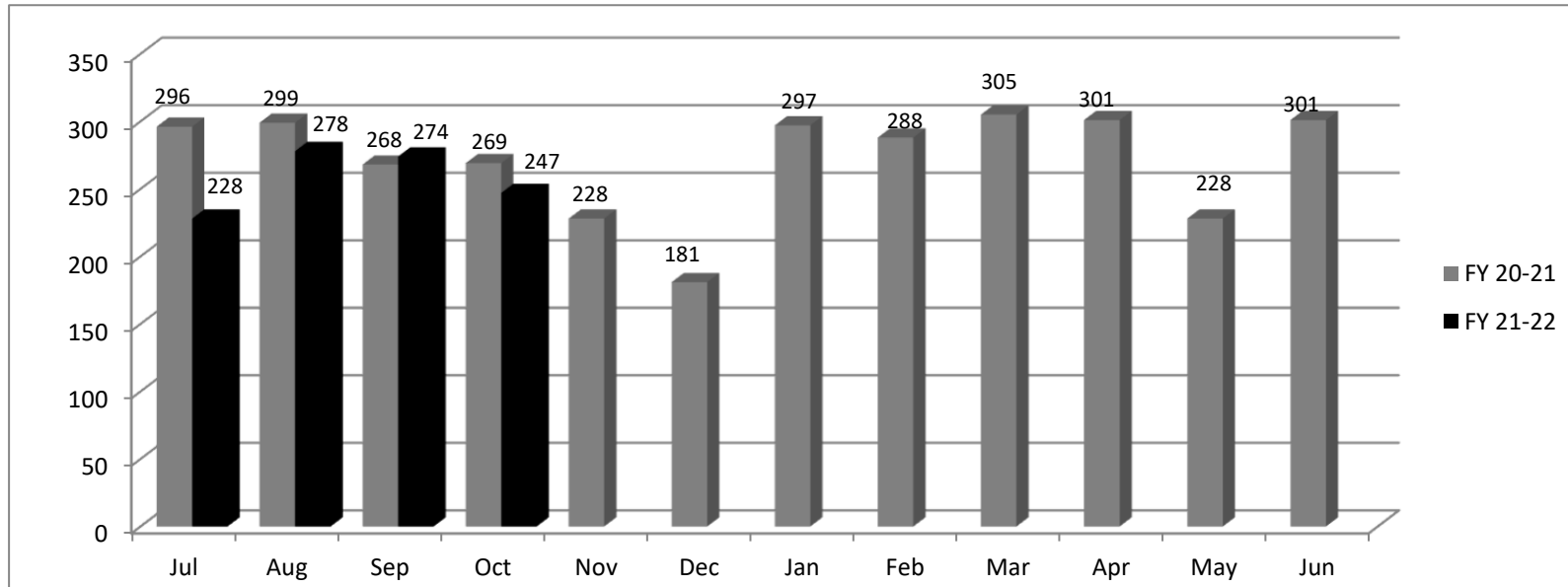


**Informal Conf. Requested**

|              | FY 20-21    | FY 21-22    |
|--------------|-------------|-------------|
| Jul          | 296         | 228         |
| Aug          | 299         | 278         |
| Sep          | 268         | 274         |
| Oct          | 269         | 247         |
| Nov          | 228         |             |
| Dec          | 181         |             |
| Jan          | 297         |             |
| Feb          | 288         |             |
| Mar          | 305         |             |
| Apr          | 301         |             |
| May          | 228         |             |
| Jun          | 301         |             |
| <b>Total</b> | <b>3261</b> | <b>1027</b> |



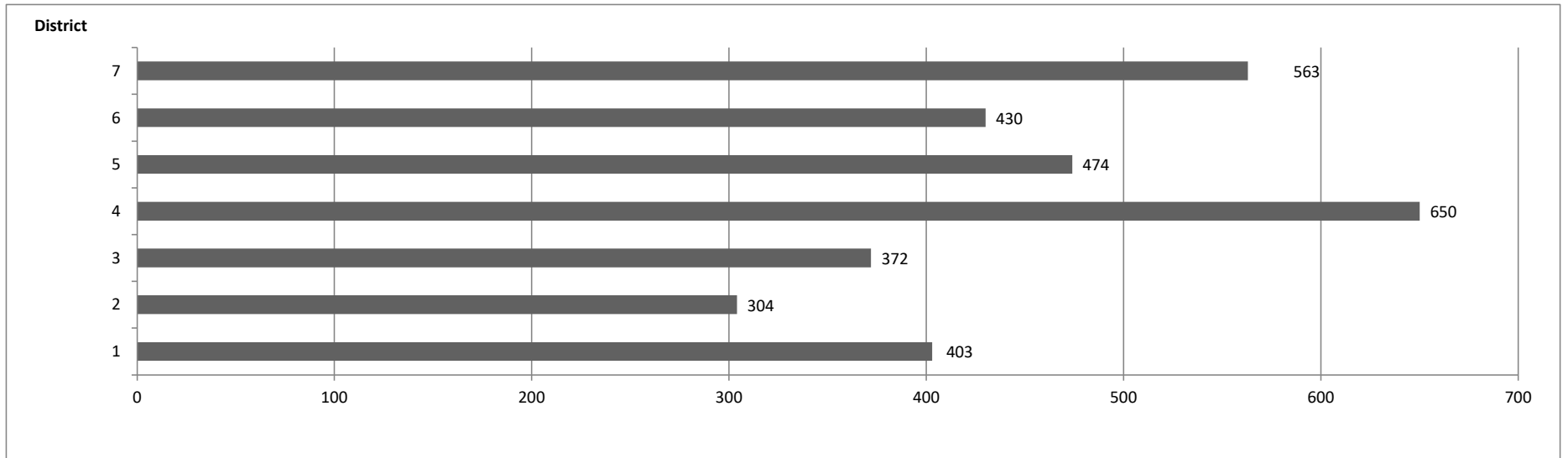
|              | FY 20-21    | FY 21-22    |
|--------------|-------------|-------------|
| <b>Y-T-D</b> | <b>1132</b> | <b>1027</b> |



### Pleadings Assigned - Three Year Comparison by Month

|               | District 1 |             |             | District 2 |            |            | District 3 |             |             | District 4 |             |             | District 5 |             |             | District 6  |             |             | District 7 |             |             |
|---------------|------------|-------------|-------------|------------|------------|------------|------------|-------------|-------------|------------|-------------|-------------|------------|-------------|-------------|-------------|-------------|-------------|------------|-------------|-------------|
|               | Greenville |             |             | Anderson   |            |            | Orangeburg |             |             | Charleston |             |             | Florence   |             |             | Spartanburg |             |             | Richland   |             |             |
|               | 21-22      | 20-21       | 19-20       | 21-22      | 20-21      | 19-20      | 21-22      | 20-21       | 19-20       | 21-22      | 20-21       | 19-20       | 21-22      | 20-21       | 19-20       | 21-22       | 20-21       | 19-20       | 21-22      | 20-21       | 19-20       |
| Jul           | 112        | 120         | 99          | 87         | 81         | 84         | 72         | 85          | 123         | 166        | 151         | 183         | 109        | 126         | 136         | 122         | 112         | 137         | 156        | 154         | 140         |
| Aug           | 93         | 88          | 99          | 67         | 73         | 85         | 101        | 105         | 78          | 174        | 142         | 168         | 112        | 125         | 153         | 101         | 95          | 104         | 134        | 133         | 147         |
| Sep           | 109        | 87          | 101         | 77         | 70         | 77         | 96         | 107         | 98          | 158        | 162         | 174         | 143        | 128         | 108         | 112         | 113         | 104         | 143        | 169         | 131         |
| Oct           | 89         | 93          | 115         | 73         | 81         | 90         | 103        | 125         | 76          | 152        | 175         | 187         | 110        | 115         | 124         | 95          | 104         | 121         | 130        | 159         | 142         |
| Nov           |            | 92          | 83          |            | 88         | 74         |            | 100         | 108         |            | 176         | 155         |            | 96          | 116         |             | 104         | 78          |            | 134         | 148         |
| Dec           |            | 90          | 81          |            | 68         | 65         |            | 115         | 80          |            | 168         | 140         |            | 132         | 99          |             | 96          | 104         |            | 141         | 117         |
| Jan           |            | 79          | 98          |            | 56         | 69         |            | 96          | 78          |            | 172         | 186         |            | 110         | 104         |             | 88          | 88          |            | 124         | 110         |
| Feb           |            | 84          | 91          |            | 88         | 85         |            | 86          | 78          |            | 133         | 143         |            | 101         | 132         |             | 93          | 126         |            | 118         | 166         |
| Mar           |            | 125         | 112         |            | 93         | 96         |            | 118         | 134         |            | 201         | 187         |            | 132         | 131         |             | 106         | 111         |            | 164         | 183         |
| Apr           |            | 94          | 90          |            | 63         | 78         |            | 100         | 90          |            | 138         | 150         |            | 112         | 136         |             | 106         | 100         |            | 134         | 140         |
| May           |            | 90          | 100         |            | 69         | 80         |            | 85          | 80          |            | 134         | 126         |            | 110         | 103         |             | 98          | 104         |            | 126         | 125         |
| Jun           |            | 95          | 112         |            | 74         | 75         |            | 98          | 91          |            | 164         | 170         |            | 117         | 97          |             | 103         | 109         |            | 134         | 175         |
| <b>Totals</b> | <b>403</b> | <b>1137</b> | <b>1181</b> | <b>304</b> | <b>904</b> | <b>958</b> | <b>372</b> | <b>1220</b> | <b>1114</b> | <b>650</b> | <b>1916</b> | <b>1969</b> | <b>474</b> | <b>1404</b> | <b>1439</b> | <b>430</b>  | <b>1218</b> | <b>1286</b> | <b>563</b> | <b>1690</b> | <b>1724</b> |

### Pleadings Assigned by District Year to Date



# State of South Carolina



## Workers' Compensation Commission

### Executive Director's Report November 15, 2021

#### Medical Services Provider Manual

Staff continues to have biweekly conference calls with the FairHealth team. A draft of the policy changes and the financial evaluation will be presented to the Commissioners at the December Business meeting.

|  |  |
|--|--|
| <b>COVID-19 Claims for October 2021</b>                |  |
| Total Claims Filed from 2/1/2020 – 9/30/2021           | 4,018  |
| Claims reported to the Commission in September, 2021   | 145  |
| Total Reported Fatalities from 2/1/2020 – 9/30/21      | 27   |
| Open Claims denied on Form 19                          | 20   |
| Closed Claims denied on a Form 19                      | 2,517  |
| Total Claims closed                                    | 3,714  |
| Claims with attorney representation                    | 130  |
| Claims with active Judicial Activity                   | 11   |
| Claims with closed Judicial Activity                   | 65   |
| Total Medical Paid on closed claims thru 7/31/2021     | \$648,005  |
| Total Non-Medical Paid on closed claims thru 7/31/2021 | \$2,501,390  |
| Counties reporting highest number of claims            | Greenville (497),<br>Charleston (444),<br>Richland (292) |
| Occupation reporting the highest number of claims      | Registered Nurse (458)                                   |

#### Meetings/Activities

During the month of October, the Executive Director presented at the SC Employers' Advocates Association, participated 2 pending litigation team meeting presented to the Forestry Class at Clemson University, two calls with FairHealth, one employee reception, 5 interviews of prospective employees, one interview of a Azure expert, a FY2022-23 Budget Hearing for the Executive Budget Office, conducted 5 employee performance evaluations, one meeting concerning the website update, and one meeting concerning the Nuts and Bolts training session for stakeholders next spring.



**Constituent /Public Information Services**

For the period October 1, 2021 to October 31, 2021, the Executive Director's Office and the General Counsel's office had 332 electronic and personal contacts with claimants or constituents, state agencies, federal agencies, attorneys, service providers, business partners, and letters with congressional offices.

**Financial Transactions Activity**

For the period October 1, 2021 to October 31, 2021, the Director's office processed and approved 30 travel expense reports, 100 invoices, and 46 deposits for DOA to process in the SCIES system.

**SCWCC Stakeholder Electronic Distribution List**

For the period October 1, 2021 to October 31, 2021, we added two (2) individuals. Due to the receipt of email delivery failures, a total of twelve (12) email addresses were deleted. A total of 733 individuals currently receives notifications from the Commission. We are continuing to see a large increase in email failures. Upon verification, a lot are from stakeholders that have been on the list for many years, that have retired or have decided to move on.

**Advisory Notices**

During the month of September, the office posted one (1) notice on the Commission's website and emailed it to the distribution list.

# State of South Carolina

1333 Main Street, 5<sup>th</sup> Floor  
P.O. Box 1715  
Columbia, S.C. 29202-1715



TEL: (803) 737-5700  
www.wcc.sc.gov

## Workers' Compensation Commission

### MEMORANDUM

**TO: COMMISSIONERS**

**FROM: Gary Cannon  
Executive Director**

**DATE: November 18, 2021**

**RE: FINANCIAL REPORT - Period ending October 31, 2021**

Attached is the Budget vs. Actual Report for the General Fund and Earmarked Fund for the fiscal year period ending October 31, 2021. The benchmark for this period is 33%.

#### Expenditures

The expenditures for the General Fund are on pages 1-2 of the attached report "Budget vs. Actual Report FY2021. The year-to-date expenditures in the General Fund (10010000) for this period is \$844,836. The amount budgeted in the IT Management Project account is \$1,695,084, which is not a part of the daily operations. Reducing the total Current Budget in the General Fund by this amount results in an adjusted budget for operations \$2,845,196. The year-to-date operational expenditures is \$844,830 or 30% of the adjusted total budgeted amount.

The Earmarked Fund financials begin on page 3 with the total expenditures found on page 6. The year-to-date expenditures, \$1,386,643 found on page 7 is 25% of budgeted amount.

#### Revenues

The Earmarked Fund budgeted \$3,170,991 for operating revenues. Year to date the Fund received \$885,817 or 28% of budgeted revenues.

#### Self-Insurance Tax Funds

To date we have received \$2,206,646 of Self-Insurance Tax funds.

**South Carolina Workers' Compensation Commission**  
**Budget vs. Actual Report**  
**FY 2022 As of 10/31/2021**  
**33% of year elapsed**

**Fund 10010000 - GENERAL FUND**

**Administration**

| Commitment Item              | Commitment Item Description | Current Budget | YTD Expenditures | % Used    | Commitments | Remaining Balance |
|------------------------------|-----------------------------|----------------|------------------|-----------|-------------|-------------------|
| 501015                       | DIRECTOR                    | 138,686        | 47,384           | 34%       |             | 91,302            |
| 501058                       | CLASSIFIED POS              | 48,034         |                  |           |             | 48,034            |
| 512001                       | OTHER OPERATING             | 323,033        |                  |           |             |                   |
| Total OTHER OPERATING:       |                             | 323,033        |                  |           |             | 323,033           |
| <b>Total Administration:</b> |                             | <b>509,753</b> | <b>47,384</b>    | <b>9%</b> |             | <b>462,369</b>    |

**Inform. services**

| Commitment Item                | Commitment Item Description | Current Budget | YTD Expenditures | % Used | Commitments   | Remaining Balance |
|--------------------------------|-----------------------------|----------------|------------------|--------|---------------|-------------------|
| 5030067130                     | EQUIP&SUPP- EUC             |                | 1,110            |        | 21,718        |                   |
| Total OTHER OPERATING:         |                             |                | 1,110            |        | 21,718        | -22,828           |
| <b>Total Inform. services:</b> |                             |                | <b>1,110</b>     |        | <b>21,718</b> | <b>-22,828</b>    |

**Claims**

| Commitment Item        | Commitment Item Description | Current Budget | YTD Expenditures | % Used     | Commitments | Remaining Balance |
|------------------------|-----------------------------|----------------|------------------|------------|-------------|-------------------|
| 501058                 | CLASSIFIED POS              | 80,565         | 27,526           | 34%        |             | 53,039            |
| 5050020000             | IN ST-LODGING               |                |                  |            | 164         |                   |
| Total OTHER OPERATING: |                             |                |                  |            | 164         | -164              |
| <b>Total Claims:</b>   |                             | <b>80,565</b>  | <b>27,526</b>    | <b>34%</b> | <b>164</b>  | <b>52,875</b>     |

**Commissioners**

| Commitment Item             | Commitment Item Description | Current Budget   | YTD Expenditures | % Used     | Commitments | Remaining Balance |
|-----------------------------|-----------------------------|------------------|------------------|------------|-------------|-------------------|
| 501026                      | CHAIRMAN                    | 168,057          | 57,419           | 34%        |             | 110,638           |
| 501033                      | COMMISSIONER                | 978,964          | 334,478          | 34%        |             | 644,486           |
| 501050                      | TAXABLE SUBS                | 70,000           | 18,949           | 27%        |             | 51,051            |
| 501058                      | CLASSIFIED POS              | 345,000          | 117,415          | 34%        |             | 227,585           |
| 501070                      | OTH PERS SVC                |                  | 3,750            |            |             | -3,750            |
| <b>Total Commissioners:</b> |                             | <b>1,562,021</b> | <b>532,012</b>   | <b>34%</b> | <b>0</b>    | <b>1,030,009</b>  |

**South Carolina Workers' Compensation Commission**  
**Budget vs. Actual Report**  
**FY 2022 As of 10/31/2021**  
**33% of year elapsed**

**Fund 10010000 - GENERAL FUND**

**Information Services FY18**

| Commitment Item                         | Commitment Item Description | Current Budget   | YTD Expenditures | % Used   | Commitments | Remaining Balance |
|---|-----------------------------|------------------|------------------|----------|-------------|-------------------|
| 561000                                  | Special Item                | 1,695,084        | 0                | 0        | 0           | 1,695,084         |
| <b>Total Information Services FY18:</b> |                             | <b>1,695,084</b> | <b>0</b>         | <b>0</b> | <b>0</b>    | <b>1,695,084</b>  |

**Insurance & Medical**

| Commitment Item                       | Commitment Item Description | Current Budget | YTD Expenditures | % Used     | Commitments | Remaining Balance |
|---------------------------------------|-----------------------------|----------------|------------------|------------|-------------|-------------------|
| 501058                                | CLASSIFIED POS              | 30,600         | 10,455           | 34%        |             | 20,145            |
| <b>Total Insurance &amp; Medical:</b> |                             | <b>30,600</b>  | <b>10,455</b>    | <b>34%</b> |             | <b>20,145</b>     |

**Judicial**

| Commitment Item        | Commitment Item Description | Current Budget | YTD Expenditures | % Used | Commitments | Remaining Balance |
|------------------------|-----------------------------|----------------|------------------|--------|-------------|-------------------|
| 512001                 | OTHER OPERATING             | 29,852         |                  |        |             |                   |
| Total OTHER OPERATING: |                             | 29,852         |                  |        |             | 29,852            |
| <b>Total Judicial:</b> |                             | <b>29,852</b>  |                  |        |             | <b>29,852</b>     |

**Employer Contributions**

| Commitment Item                      | Commitment Item Description | Current Budget | YTD Expenditures | % Used     | Commitments | Remaining Balance |
|--------------------------------------|-----------------------------|----------------|------------------|------------|-------------|-------------------|
| 513000                               | EMPLOYER CONTRIB            | 632,405        | 226,349          | 36%        |             | 406,056           |
| <b>Total Employer Contributions:</b> |                             | <b>632,405</b> | <b>226,349</b>   | <b>36%</b> |             | <b>406,056</b>    |

|                            |  |                  |                |            |               |                  |
|----------------------------|--|------------------|----------------|------------|---------------|------------------|
| <b>Total GENERAL FUND:</b> |  | <b>4,540,280</b> | <b>844,836</b> | <b>19%</b> | <b>21,882</b> | <b>3,673,563</b> |
|----------------------------|--|------------------|----------------|------------|---------------|------------------|

**South Carolina Workers' Compensation Commission**  
**Budget vs. Actual Report**  
**FY 2022 As of 10/31/2021**  
**33% of year elapsed**

**Fund 31C30000 - COVID-19 RESP RESERV**

**Inform. services**

| <b>Commitment Item</b> | <b>Commitment Item Description</b> | <b>Current Budget</b> | <b>YTD Expenditures</b> | <b>% Used</b> | <b>Commitments</b> | <b>Remaining Balance</b> |
|------------------------|------------------------------------|-----------------------|-------------------------|---------------|--------------------|--------------------------|
| 512001                 | OTHER OPERATING                    | 100,000               |                         |               |                    |                          |
| 5030067130             | EQUIP&SUPP- EUC                    |                       | 11,273                  |               |                    |                          |
|                        | <b>Total OTHER OPERATING:</b>      | <b>100,000</b>        | <b>11,273</b>           | <b>11%</b>    | <b>0</b>           | <b>88,727</b>            |
|                        | <b>Total Inform. services:</b>     | <b>100,000</b>        | <b>11,273</b>           | <b>11%</b>    | <b>0</b>           | <b>88,727</b>            |
|                        | <b>Total COVID-19 RESP RESERV:</b> | <b>100,000</b>        | <b>11,273</b>           | <b>11%</b>    | <b>0</b>           | <b>88,727</b>            |

**South Carolina Workers' Compensation Commission**  
**Budget vs. Actual Report**  
**FY 2022 As of 10/31/2021**  
**33% of year elapsed**

**Fund 38440000 - EARMARKED FUND**

**Administration**

| Commitment Item | Commitment Item Description | Current Budget | YTD Expenditures | % Used | Commitments | Remaining Balance |
|-----------------|-----------------------------|----------------|------------------|--------|-------------|-------------------|
| 501058          | CLASSIFIED POS              | 791,985        | 72,181           | 9%     |             | 719,804           |
| 501070          | OTH PERS SVC                | 41,000         | 2                | 0%     |             | 40,998            |
| 512001          | OTHER OPERATING             | 2,282,671      |                  |        |             |                   |
| 5020030000      | PRINT / BIND / ADV          |                | 106              |        |             |                   |
| 5021010003      | LEGAL SRV-TRANSCRIPT        |                | 30               |        | 130         |                   |
| 5021020000      | ATTORNEY FEES               |                | 2,150            |        |             |                   |
| 5021490000      | AUDIT ACCT FINANCE          |                | 130              |        |             |                   |
| 5024990000      | OTH CNT-NON-IT & REA        |                | 842              |        |             |                   |
| 5030010000      | OFFICE SUPPLIES             |                | 656              |        |             |                   |
| 5030010002      | OFF SUP - MIN OFF EQ        |                | 9                |        |             |                   |
| 5030010004      | SUBSCRIPTIONS               |                | 32               |        |             |                   |
| 5030030000      | PRINTED ITEMS               |                | 1,840            |        |             |                   |
| 5030050000      | PHOTO & VISUAL SUPP         |                | 134              |        |             |                   |
| 5030067101      | PRGM LIC - APP SUPP         |                | 13,799           |        | 32,446      |                   |
| 5030067130      | EQUIP&SUPP- EUC             |                | 101,952          |        |             |                   |
| 5030067170      | EQUIP&SUPP- PRINT EU        |                | 3,031            |        |             |                   |
| 5030070000      | POSTAGE                     |                | 9,961            |        |             |                   |
| 5031479203      | JANITORIAL SUPPLIES         |                | 117              |        |             |                   |
| 5032410000      | MED/SCIENT/LAB SUPP         |                | 93               |        |             |                   |
| 5033090000      | EMPLOYEE RECOG AWARD        |                | 2,472            |        |             |                   |
| 5040060000      | ST RENT-NON ST BLDG         |                | 2,095            |        | 3,167       |                   |
| 5040070000      | RENT-ST OWN RL PROP         |                | 120              |        |             |                   |
| 5040490003      | RENT PO BOX                 |                | 1,544            |        |             |                   |
| 5040490009      | RENT PARKING                |                | 5,200            |        | 11,313      |                   |
| 5041010000      | DUES & MEMBER FEES          |                | 1,570            |        |             |                   |
| 5041840000      | LEASE BLDG PRINCIPAL        |                | 172,226          |        | 149,099     |                   |
| 5041850000      | LEASE BLDG INTEREST         |                | 533              |        | 165         |                   |
| 5050010000      | IN ST-MEALS-NON-REP         |                | 251              |        |             |                   |
| 5050020000      | IN ST-LODGING               |                | 2,430            |        |             |                   |
| 5050041000      | HR-IN ST-AUTO MILES         |                | 1,027            |        |             |                   |
| 5050060000      | IN ST-MISC TR EXP           |                | 53               |        |             |                   |
| 5050070000      | IN ST-REGISTR FEES          |                | 430              |        |             |                   |

**South Carolina Workers' Compensation Commission**  
**Budget vs. Actual Report**  
**FY 2022 As of 10/31/2021**  
**33% of year elapsed**

**Fund 38440000 - EARMARKED FUND**

|                               |                      |                  |                |            |                |                  |
|-------------------------------|----------------------|------------------|----------------|------------|----------------|------------------|
| 5050510000                    | OUT ST-MEALS-NON-REP |                  | 170            |            |                |                  |
| 5050570000                    | OUT ST-REGISTR FEES  |                  | 930            |            |                |                  |
| 5051520000                    | REPORTABLE MEALS     |                  | 17             |            |                |                  |
| 5051540000                    | LEASED CAR-ST OWNED  |                  | 13,150         |            |                |                  |
| <b>Total OTHER OPERATING:</b> |                      | <b>2,282,671</b> | <b>339,101</b> | <b>15%</b> | <b>196,319</b> | <b>1,747,250</b> |
| <b>Total Administration:</b>  |                      | <b>3,115,656</b> | <b>411,284</b> | <b>13%</b> | <b>196,319</b> | <b>2,508,053</b> |

**South Carolina Workers' Compensation Commission**  
**Budget vs. Actual Report**  
**FY 2022 As of 10/31/2021**  
**33% of year elapsed**

**Fund 38440000 - EARMARKED FUND**

**Inform. services**

| Commitment Item                | Commitment Item Description | Current Budget | YTD Expenditures | % Used | Commitments   | Remaining Balance |
|--------------------------------|-----------------------------|----------------|------------------|--------|---------------|-------------------|
| 501058                         | CLASSIFIED POS              |                | 123,510          |        |               | -123,510          |
| 5020077100                     | SERVICES- APP SUP           |                | 15,145           |        | 1,139         |                   |
| 5020077110                     | SERVICES- DATA NET          |                | 125              |        |               |                   |
| 5020077200                     | SERVICES- SERVERS           |                | 1,791            |        |               |                   |
| 5020077220                     | SERVICES- VOICENET          |                | 5,963            |        | 19,440        |                   |
| 5020077240                     | DP SERVICES – STATE         |                | 103,945          |        |               |                   |
| 5021469316                     | SECURITY ALARM SRVC         |                | 2,625            |        |               |                   |
| 5030010000                     | OFFICE SUPPLIES             |                | 2,782            |        |               |                   |
| 5030010004                     | SUBSCRIPTIONS               |                | 11               |        |               |                   |
| 5030067110                     | EQUIP&SUPP- DATA NET        |                | 427              |        |               |                   |
| 5030067130                     | EQUIP&SUPP- EUC             |                | 3,704            |        | 4,650         |                   |
| 5030067141                     | PLM- ITSD                   |                | 9,590            |        |               |                   |
| 5030067170                     | EQUIP&SUPP- PRINT EU        |                | 3,660            |        | 2,440         |                   |
| 5030067211                     | PLM- STORAGE                |                | 50               |        |               |                   |
| 5030090000                     | COMMUNICATION SUPP          |                | 178              |        |               |                   |
| 5031010000                     | LAUNDRY SUPPLIES            |                | 53               |        |               |                   |
| 5040057000                     | CONTINGNT RENT - IT         |                | 1,901            |        | 60            |                   |
| 5041010000                     | DUES & MEMBER FEES          |                | 100              |        |               |                   |
| 5050070000                     | IN ST-REGISTR FEES          |                | 874              |        |               |                   |
| 5050510000                     | OUT ST-MEALS-NON-REP        |                | 100              |        |               |                   |
| 5050520000                     | OUT ST-LODGING              |                | 1,032            |        |               |                   |
| 5050531000                     | HR-OUT ST-AIR TRANS         |                | 498              |        |               |                   |
| 5050550000                     | OUT ST-OTHER TRANS          |                | 260              |        |               |                   |
| 5050560000                     | OUT ST-MISC TR EXPEN        |                | 120              |        |               |                   |
| Total OTHER OPERATING:         |                             |                | 154,936          |        | 27,729        | -182,665          |
| <b>Total Inform. services:</b> |                             |                | <b>278,446</b>   |        | <b>27,729</b> | <b>-306,175</b>   |



**South Carolina Workers' Compensation Commission**  
**Budget vs. Actual Report**  
**FY 2022 As of 10/31/2021**  
**33% of year elapsed**

**Fund 38440000 - EARMARKED FUND**

**Claims**

| Commitment Item        | Commitment Item Description | Current Budget | YTD Expenditures | % Used     | Commitments | Remaining Balance |
|------------------------|-----------------------------|----------------|------------------|------------|-------------|-------------------|
| 501058                 | CLASSIFIED POS              | 280,850        | 78,460           | 28%        |             | 202,390           |
| 501070                 | OTH PERS SVC                |                | 4,000            |            |             | -4,000            |
| 512001                 | OTHER OPERATING             | 19,700         |                  |            |             |                   |
| Total OTHER OPERATING: |                             | 19,700         |                  |            |             | 19,700            |
| <b>Total Claims:</b>   |                             | <b>300,550</b> | <b>82,460</b>    | <b>27%</b> |             | <b>218,090</b>    |

**Commissioners**

| Commitment Item             | Commitment Item Description | Current Budget | YTD Expenditures | % Used     | Commitments | Remaining Balance |
|-----------------------------|-----------------------------|----------------|------------------|------------|-------------|-------------------|
| 501050                      | TAXABLE SUBS                | 70,000         |                  |            |             | 70,000            |
| 512001                      | OTHER OPERATING             | 230,700        |                  |            |             |                   |
| 5020077112                  | NCV- DATA NET               |                | 1,026            |            |             |                   |
| 5020080000                  | FREIGHT EXPRESS DELV        |                | 100              |            |             |                   |
| 5020120000                  | CELLULAR PHONE SVCS         |                | 6,865            |            |             |                   |
| 5021010003                  | LEGAL SRV-TRANSCRIPT        |                | 881              |            |             |                   |
| 5021010005                  | LEGAL SRV-REPORTER          |                | 17,655           |            |             |                   |
| 5021540000                  | NON-IT OTHER PRO SRV        |                | 240              |            |             |                   |
| 5050010000                  | IN ST-MEALS-NON-REP         |                | 205              |            |             |                   |
| 5050020000                  | IN ST-LODGING               |                | 1,290            |            |             |                   |
| 5050041000                  | HR-IN ST-AUTO MILES         |                | 3,784            |            |             |                   |
| 5050060000                  | IN ST-MISC TR EXP           |                | 53               |            |             |                   |
| 5050080000                  | IN ST-SUBSIST ALLOW         |                | 1,038            |            |             |                   |
| 5050510000                  | OUT ST-MEALS-NON-REP        |                | 85               |            |             |                   |
| 5050570000                  | OUT ST-REGISTR FEES         |                | 565              |            |             |                   |
| Total OTHER OPERATING:      |                             | 230,700        | 33,787           | 15%        | 0           | 196,913           |
| <b>Total Commissioners:</b> |                             | <b>300,700</b> | <b>33,787</b>    | <b>11%</b> | <b>0</b>    | <b>266,913</b>    |

**South Carolina Workers' Compensation Commission**  
**Budget vs. Actual Report**  
**FY 2022 As of 10/31/2021**  
**33% of year elapsed**

**Fund 38440000 - EARMARKED FUND**

**Insurance & Medical**

| Commitment Item                       | Commitment Item Description | Current Budget | YTD Expenditures | % Used     | Commitments | Remaining Balance |
|---------------------------------------|-----------------------------|----------------|------------------|------------|-------------|-------------------|
| 501058                                | CLASSIFIED POS              | 435,902        | 126,403          | 29%        |             | 309,499           |
| 501070                                | OTH PERS SVC                | 31,200         | 10,642           | 34%        |             | 20,558            |
| 512001                                | OTHER OPERATING             | 54,500         |                  |            |             |                   |
| 5021540000                            | NON-IT OTHER PRO SRV        |                | 7,070            |            |             |                   |
| 5024990000                            | OTH CNT-NON-IT & REA        |                | 330              |            |             |                   |
| 5030010004                            | SUBSCRIPTIONS               |                | 220              |            |             |                   |
| 5050010000                            | IN ST-MEALS-NON-REP         |                | 105              |            |             |                   |
| 5050020000                            | IN ST-LODGING               |                | 1,196            |            | 164         |                   |
| 5050041000                            | HR-IN ST-AUTO MILES         |                | 603              |            |             |                   |
| 5050060000                            | IN ST-MISC TR EXP           |                | 42               |            |             |                   |
| 5050510000                            | OUT ST-MEALS-NON-REP        |                | 85               |            |             |                   |
| 5050570000                            | OUT ST-REGISTR FEES         |                | 415              |            |             |                   |
| Total OTHER OPERATING:                |                             | 54,500         | 10,066           | 18%        | 164         | 44,270            |
| <b>Total Insurance &amp; Medical:</b> |                             | <b>521,602</b> | <b>147,110</b>   | <b>28%</b> | <b>164</b>  | <b>374,328</b>    |

**Judicial**

| Commitment Item        | Commitment Item Description | Current Budget | YTD Expenditures | % Used     | Commitments | Remaining Balance |
|------------------------|-----------------------------|----------------|------------------|------------|-------------|-------------------|
| 501058                 | CLASSIFIED POS              | 470,084        | 156,573          | 33%        |             | 313,511           |
| 501070                 | OTH PERS SVC                | 62,193         | 16,001           | 26%        |             | 46,192            |
| 512001                 | OTHER OPERATING             | 12,800         |                  |            |             |                   |
| 5021010003             | LEGAL SRV-TRANSCRIPT        |                | 155              |            |             |                   |
| 5021010005             | LEGAL SRV-REPORTER          |                | 465              |            |             |                   |
| 5030010000             | OFFICE SUPPLIES             |                | 149              |            |             |                   |
| 5030067130             | EQUIP&SUPP- EUC             |                | 167              |            |             |                   |
| 5040490008             | RENT POSTAGE EQUIP          |                | 2,145            |            |             |                   |
| 5050020000             | IN ST-LODGING               |                |                  |            | 164         |                   |
| Total OTHER OPERATING: |                             | 12,800         | 3,081            | 24%        | 164         | 9,555             |
| <b>Total Judicial:</b> |                             | <b>545,077</b> | <b>175,656</b>   | <b>32%</b> | <b>164</b>  | <b>369,258</b>    |

**South Carolina Workers' Compensation Commission**  
**Budget vs. Actual Report**  
**FY 2022 As of 10/31/2021**  
**33% of year elapsed**

**Fund 38440000 - EARMARKED FUND**

**Employer Contributions**

| Commitment Item                      | Commitment Item Description | Current Budget | YTD Expenditures | % Used     | Commitments | Remaining Balance |
|--------------------------------------|-----------------------------|----------------|------------------|------------|-------------|-------------------|
| 513000                               | EMPLOYER CONTRIB            | 724,260        | 257,900          | 36%        | 0           | 466,360           |
| <b>Total Employer Contributions:</b> |                             | <b>724,260</b> | <b>257,900</b>   | <b>36%</b> | <b>0</b>    | <b>466,360</b>    |

|                              |  |                  |                  |            |                |                  |
|------------------------------|--|------------------|------------------|------------|----------------|------------------|
| <b>Total EARMARKED FUND:</b> |  | <b>5,507,845</b> | <b>1,386,643</b> | <b>25%</b> | <b>224,376</b> | <b>3,896,825</b> |
|------------------------------|--|------------------|------------------|------------|----------------|------------------|

**South Carolina Workers' Compensation Commission**

**Commitments**

**FY 2022 As of 10/31/2021**

**Fund 10010000 - GENERAL FUND**

**Inform. services**

| Commitment Item                | Commitment Item Description | Vendor            | Commitment    |
|--------------------------------|-----------------------------|-------------------|---------------|
| 5030067130                     | EQUIP&SUPP- EUC             | DELL MARKETING LP | 21,718        |
| <b>Total Inform. services:</b> |                             |                   | <b>21,718</b> |

|                            |               |
|----------------------------|---------------|
| <b>Total GENERAL FUND:</b> | <b>21,718</b> |
|----------------------------|---------------|

**Fund 38440000 - EARMARKED FUND**

**Administration**

| Commitment Item              | Commitment Item Description | Vendor                          | Commitment     |
|------------------------------|-----------------------------|---------------------------------|----------------|
| 5021010003                   | LEGAL SRV-TRANSCRIPT        | GLOBAL INTERPRETING NETWORK INC | 130            |
| 5030067101                   | PRGM LIC - APP SUPP         | WEST PUBLISHING CORPORATION     | 32,446         |
| 5040060000                   | ST RENT-NON ST BLDG         | GALIUM 1333 MAIN LLC            | 3,167          |
| 5040490009                   | RENT PARKING                | REPUBLIC PARKING SYSTEM INC     | 11,313         |
| 5041840000                   | LEASE BLDG PRINCIPAL        | GALIUM 1333 MAIN LLC            | 149,099        |
| 5041850000                   | LEASE BLDG INTEREST         | GALIUM 1333 MAIN LLC            | 165            |
| <b>Total Administration:</b> |                             |                                 | <b>196,319</b> |

**Inform. services**

| Commitment Item                | Commitment Item Description | Vendor                 | Commitment    |
|--------------------------------|-----------------------------|------------------------|---------------|
| 5020077100                     | SERVICES- APP SUP           | PROGRESS SOFTWARE CORP | 1,139         |
| 5020077220                     | SERVICES- VOICENET          | NWN CORPORATION        | 19,440        |
| 5030067130                     | EQUIP&SUPP- EUC             | KEYMARK INC            | 4,650         |
| 5030067170                     | EQUIP&SUPP- PRINT EU        | US INK AND TONER INC   | 2,440         |
| 5040057000                     | CONTINGNT RENT - IT         | XEROX                  | 60            |
| <b>Total Inform. services:</b> |                             |                        | <b>27,729</b> |

|                              |                |
|------------------------------|----------------|
| <b>Total EARMARKED FUND:</b> | <b>224,048</b> |
|------------------------------|----------------|

Any items with vendor "Not assigned" are pending financial adjustments. Any commitment on the Budget vs. Actual Report that is missing from this list is a travel commitment.