

## A G E N D A

### SOUTH CAROLINA WORKERS' COMPENSATION COMMISSION

1333 Main Street, 5<sup>th</sup> Floor  
Columbia, South Carolina 29201

**May 18, 2020 10:30 a.m.**

The meeting will be conducted electronically via Zoom with the Commissioners participating from different locations. The meeting agenda was posted prior to the meeting and proper advance notice was made in compliance with requirements in the Freedom of Information Act. Individuals who want to attend the meeting may do so by contacting Gary M. Cannon, Executive Director at [GCannon@wcc.sc.gov](mailto:GCannon@wcc.sc.gov).

- |   |  |
|---|--|
| 1. CALL TO ORDER  | CHAIRMAN BECK  |
| 2. APPROVAL OF AGENDA OF BUSINESS MEETING<br>OF MAY 18, 2020  | CHAIRMAN BECK  |
| 3. APPROVAL OF MINUTES OF THE BUSINESS MEETING<br>OF April 20, 2020 (Tab 1)   | CHAIRMAN BECK  |
| 4. GENERAL ANNOUNCEMENTS  | MR. CANNON   |
| 5. APPLICATIONS FOR APPROVAL TO SELF-INSURE (Tab 2)   | MS. BOGGS  |
| 6. DEPARTMENT DIRECTORS' REPORTS<br>Human Resources (Tab 3)<br>Information Services (Tab 4)<br>Insurance and Medical Services (Tab 5)<br>Claims (Tab 6)<br>Judicial (Tab 7) | MS. STUART<br>MS. SPRANG<br>MR. DUCOTE<br>MS. SPANN<br>MS. BRACY |
| 7. DEPARTMENT OF VOCATIONAL REHABILITATION<br>Monthly Report (Tab 8)  | MR. CANNON   |
| 8. EXECUTIVE DIRECTOR'S REPORT (Tab 9)  | MR. CANNON   |
| 9. FINANCIAL REPORT (Tab 10)  | MR. CANNON   |
| 10. OLD BUSINESS  | CHAIRMAN BECK  |
| 11. NEW BUSINESS<br>Discussion of the timeframe of conducting in person hearings.   | CHAIRMAN BECK  |
| 11. ADJOURNMENT   | CHAIRMAN BECK  |

# **Table of Contents**

<b>1</b>	<b>Approval of Minutes of the Business Meeting of April 13, 2020</b>
<b>2</b>	<b>Self-Insurance</b>
<b>3</b>	<b>Human Resources</b>
<b>4</b>	<b>Information Services</b>
<b>5</b>	<b>Insurance and Medical Services</b>
<b>6</b>	<b>Claims</b>
<b>7</b>	<b>Judicial</b>
<b>8</b>	<b>Vocational Rehabilitation</b>
<b>9</b>	<b>Executive Director's Report</b>
<b>10</b>	<b>Financial Report</b>

# TAB 1

THE  
SOUTH CAROLINA WORKERS'  
COMPENSATION COMMISSION  
BUSINESS MEETING  
**April 13, 2020**

A Business Meeting of the South Carolina Workers' Compensation Commission was conducted electronically via ZOOM on Monday, April 13, 2020 at 10:30 AM. The meeting agenda was posted prior to the meeting and proper advance notice was made in compliance with requirements in the Freedom of Information Act. The following Commissioners were present:

T. SCOTT BECK, CHAIRMAN  
SUSAN S. BARDEN, VICE CHAIR  
R. MICHAEL CAMPBELL, II, COMMISSIONER  
MELODY L. JAMES, COMMISSIONER  
GENE MCCASKILL, COMMISSIONER  
AISHA TAYLOR, COMMISSIONER  
AVERY B. WILKERSON, JR., COMMISSIONER

Participating in the ZOOM call were: Gary Cannon, Executive Director; Keith Roberts; Amy Bracy, Judicial Director; Wayne Ducote; Insurance & Medical Services Director; Sonji Spann, Claims Director; Emillie Boggs, Self-Insurance Director; Sonji Spann, Amy Proveaux, Executive Assistant and Bonnie Anzelmo of Injured Workers Advocates.

Chairman Beck called the meeting to order at 10:33 AM.

**AGENDA**

Commissioner Barden moved that the agenda be approved. Commissioner McCaskill seconded the motion, and the motion was approved.

**APPROVAL OF MINUTES – BUSINESS MEETING OF MARCH 16, 2020**

Commissioner Barden moved that the minutes of the Business Meeting of March 16, 2020, be approved. Commissioner Taylor seconded the motion, and the motion was approved.

**APPROVAL OF MINUTES OF THE BUSINESS MEETING APRIL 6, 2020**

Commissioner Barden moved that the minutes of the Business Meeting of April 6, 2020, be approved. Commissioner Taylor seconded the motion, and the motion was approved.

**APPROVAL OF MINUTES OF THE BUSINESS MEETING APRIL 13, 2020**

Commissioner Barden moved that the minutes of the Business Meeting of April 13, 2020, be approved. Commissioner James seconded the motion, and the motion was approved.

## **GENERAL ANNOUNCEMENTS**

Mr. Cannon reported there were no general announcements.

## **APPLICATIONS FOR APPROVAL TO SELF-INSURE**

Self-insurance applications were presented by Emillie Boggs, Self-Insurance Director. Ten (10) prospective members of one (1) funds was presented to the Commission for approval.

### **New Applications:**

#### **South Carolina Home Builders SIF**

All About Communications, LLC  
Barrett Construction, LLC  
CL Cromer Construction, LLC  
Dawol Homes Inc.  
Elm Construction, LLC  
EMZ Contracting, Inc.  
Jason Wilkes  
Morning Star Mechanical LLC  
Premier Framing & Drywall LLC  
Saluda Construction & More LLC

After examination of the applications, it was determined that each complied with the Commission's requirements and each was recommended for approval. Commissioner Wilkerson made the motion to approve the applications to self-insure, and Commissioner Taylor seconded the motion. The motion was approved.

## **DEPARTMENT DIRECTORS' REPORTS**

The Department Directors submitted to the Commission in written form and included in the minutes.

## **VOCATIONAL REHABILITATION**

Commissioner Taylor inquired about the previous request as to tracking of the metrics. Director Cannon directed to the Commissioners to Tab 10 to view the memo. There was a discussion on what additional information and metrics the Commissioners would like to see.

## **EXECUTIVE DIRECTOR'S REPORT**

Gary Cannon, Executive Director, submitted his to the Commission in written form.

## **ADMINISTRATION – FINANCIAL REPORT**

Gary Cannon Executive Director Submitted his report to the Commission in written form.

## **OLD BUSINESS**

No new business

**NEW BUSINESS**

Prohibition of conducting in person hearings.

There was discussion as to scheduling and moving forward. A tentative date of May 15, 2020 has been set, with the understanding that that can be moved with the Governor's orders.

Commissioner McCaskill made the motion to amend the advisory, and Commissioner Wilkerson seconded the motion. The motion was approved.

**ADJOURNMENT**

Commissioner Baden made the motion to adjourn. Commissioner Wilkerson seconded the motion, and the motion was approved.

The April 13, 2020, meeting of the South Carolina Workers' Compensation Commission adjourned at 11:08 a.m.

Reported May 12, 2020  
Amy Proveaux  
Office of the Executive Director

# TAB 3

## *State of South Carolina*

1333 Main Street, 5<sup>th</sup> Floor  
P.O. Box 1715  
Columbia, S.C. 29202-1715



TEL: (803) 737-5700  
FAX: (803) 737-5764

### *Workers' Compensation Commission*

**TO:** Gary Cannon

**FROM:** Alexa Stuart

**DATE:** May 13, 2020

**SUBJECT: Monthly Human Resources Report for May 2020 Business Meeting**

This report summarizes the activities of Human Resources during the month of April 2020.

In March the Commission had 53 FTE positions available. We have 1 part-time employee.

- **New Hires:** We hired 3 summer legal interns. They are scheduled to begin work June 1, 2020.
- **Separations or Retirements:** None
- **Leaves:** None

I met with management several times on one employee-related issue and it has been addressed. We held a performance improvement discussion and followed up with a summary of the discussion to all parties involved

We sent 22 "All Agency" emails during the month. This is fewer than the previous month's reporting. Many of the all employee emails were relative to the issues and concerns of the Covid19 virus.

In SCEIS, I had 6 SCEIS transactions. Payroll and time reports were run as scheduled. We processed 2 travel in the month of April.

We had 1 CBRE building issues and 4 parking transactions which had to do with the invoicing.

Since March 23<sup>rd</sup>, I have been reporting to the State HR department data regarding who was working onsite, telecommuting and taking leave. This is done daily.

Continued work on working from home policies, processes and tracking performance. I sent numerous communications regarding the virus. I created a spreadsheet that we use to track employees work activities from home. Once a week, I receive lists of the daily activities of those working from home. I take that data, summarize daily activities into a weekly summary by employee and add it to a spreadsheet for management's review.

For the month of April, we had an average of 14 employees working onsite, 36 employees working from home and less than 1 percent of the employees were on leave.



# TAB 4

# State of South Carolina

1333 Main St, Suite 500  
P.O. Box 1715  
Columbia, S.C. 29202-1715



Tel: (803) 737-5700  
Fax: (803) 737-1258  
www.wcc.sc.gov

## Workers' Compensation Commission

---

To: Gary Cannon  
SCWCC Executive Director  
From: Sandee Sprang, IT Director  
Date: May 13, 2020  
Subject: IT Department April 2020 Full Commission Report

---

This report summarizes the activities and accomplishments of departmental projects and initiatives for the IT department during April 2020.

### **I. Systems Operations, Maintenance and Support**

#### EDI

We are continuing to convert all EDI trading partner accounts to a new server with enhanced security. The team worked with multiple EDI Trading Partners identify specific reasons for data rejections. We continue our participation in IAIABC conference calls for Jurisdictions Only and for EDI Claims Committee. Our agency received many expressions of appreciation for donating the new EDI 3.1 XML schema to the IAIABC. It was adopted as the new standard for all states.

#### Progress

The Progress system remains fully operational and continues to have the occasional resource issue which denies users access. We are routinely monitoring the logs to make sure these issues are addressed promptly to minimize impact to staff. Duane analyzed, tested and implemented the process to reinstitute fine assessments for Form 18, Form 12-A, Form 12-M, Late Proof of Coverage and Improper Proof of Coverage which began May 1, 2020.

#### Systems Support

The IT department's efforts were in April were focused on supporting staff and building efficiencies in our work from home processes. We expanded our use of Zoom and CourtCall to aid in the continuity of business operations.

#### OnBase

We have completed the initial testing of the features and functionality for the new OnBase upgrade. Kim is leading these efforts and working with DTO to ensure the implementation schedule and client upgrade process is as efficient as possible with minimal impact to our users

### **II. Projects, Enhancements and Development**

#### Legacy Modernization

We continue our working engagement with Microsoft as part of the gap analysis of our KERMIT project.

# TAB 5

State of South Carolina



Workers' Compensation Commission

---

**To:** Mr. Gary Cannon  
SCWCC Executive Director

**From:** Wayne Ducote, Jr.  
IMS Director

**Date:** 14-May-20

**Subj:** Insurance and Medical Services Department  
April 2020 Full Commission Report

---

Please find attached information provided to summarize the status and workflow of initiatives currently underway within the Insurance and Medical Services (IMS) Department.

In addition to the statistical data provided, please be advised of the following:

- |                     |  |
|---------------------|--|
| Compliance Division | <ol style="list-style-type: none"><li>1. Reviewing revenue metrics / projections.</li><li>2. Working with staff to review workflow processes and additional training opportunities.</li><li>3. Continuing to explore outreach opportunities with stakeholders.</li></ol> |
| Coverage Division   | <ol style="list-style-type: none"><li>1. Working with staff to review workflow processes and explore opportunities to enhance service provision.</li><li>2. Lapse in Coverage: 14 new registrants; 0 notifications sent.</li></ol>                                       |
| Medical Services    | <ol style="list-style-type: none"><li>1. Working with Medical Bill Reviewers on certification renewals.</li></ol>  |

While this summary is in no way all-inclusive, it may serve to assist you and our Commissioners in understanding the key initiatives underway in the IMS Department and provide measures by which the Department's effectiveness can be gauged. IMS welcomes any guidance that you and/or our Commissioners can provide concerning our performance and direction.

**Employer Rule to Show Cause Hearings and Compliance Activity**

The Compliance Division docketed **1** new RTSC cases and **6** total RTSC cases in the month of April. And, compelled **13** South Carolina employers to come into compliance with the Act. Year to date, **58** new RTSC cases and **166** total RTSC cases have been docketed.

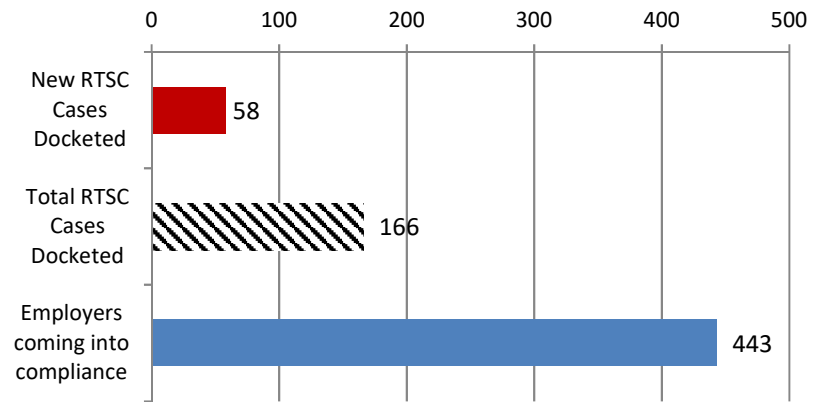
**Employers Obtaining Coverage**

Year to date, the Compliance Division has compelled **443** South Carolina employers to come into compliance with the Act. In so doing, approximately **3,427** previously uninsured workers are now properly covered.

**Penalties Waived**

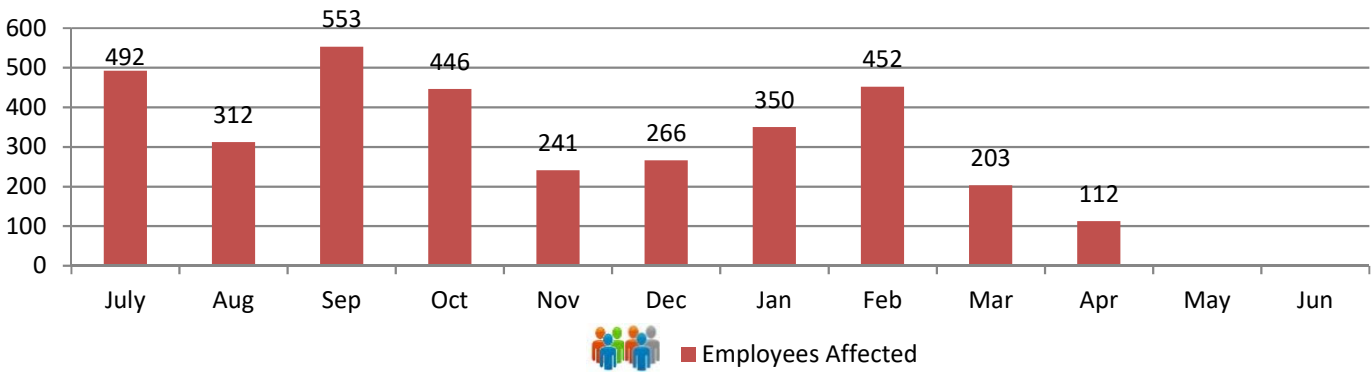
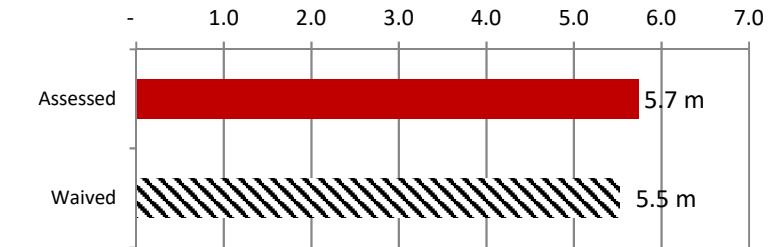
Although the Division has assessed \$5.7 m in fines this fiscal year, \$5.5 m have been waived or rescinded as employers have either obtained insurance coverage or were found not to be subject to the Act.

**RTSC and Compliance Activity**



**Fines and Penalties**

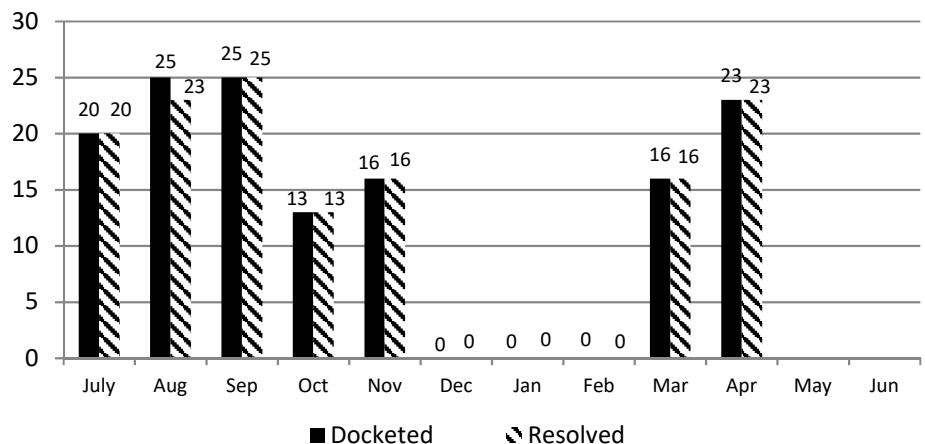
Millions



**Carrier Rule to Show Cause Hearings**

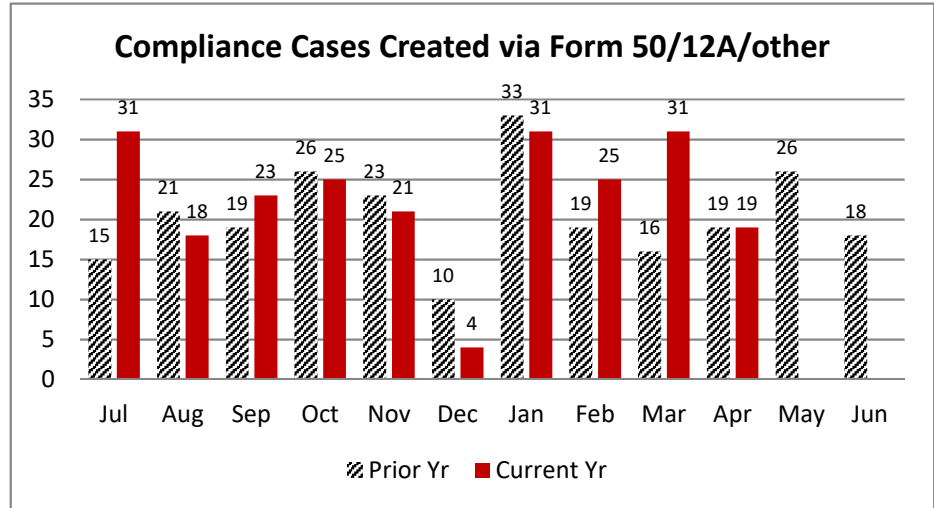
The Compliance Division manages the Rule to Show Cause process involving the recovery of outstanding carrier fines and penalties. In the month of April 2020, 23 carrier RTSC cases were docketed; 23 cases for a total of \$8,979.

Year to date, a total of 138 carrier RTSC cases have been docketed, 136 cases for a total of \$61,946 have been resolved.



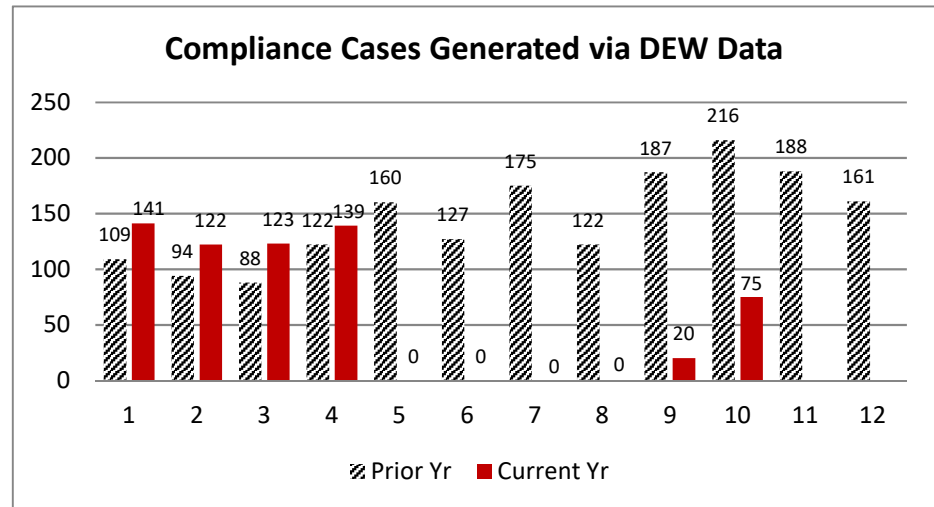
In April 2020, 19 compliance files were created from the combined filings of Form 50's, 12A's, and stakeholder reporting involving uninsured employers.

YTD vs. Prior Year total (245): 93%  
 Apr 2020 to Apr 2019: 100%  
 Current Yr End trend: 112% of 2018-2019  
 YTD 2019-2020 v. YTD 2018-2019: 104%

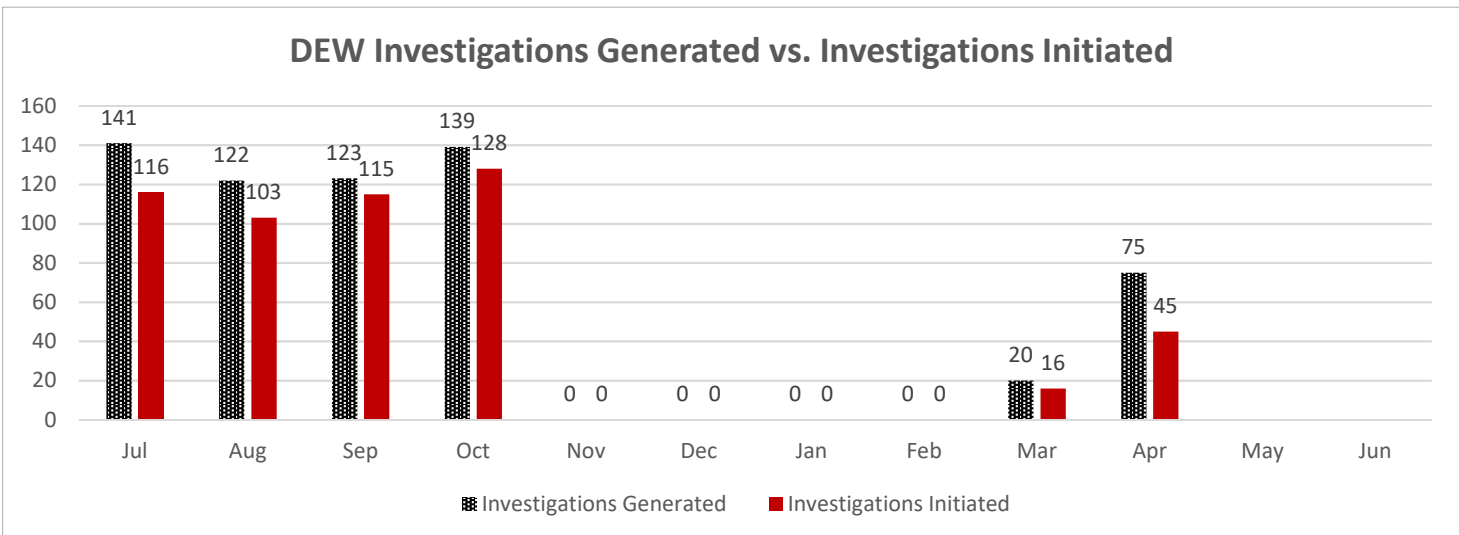


In April 2020, 75 compliance files were generated from the DEW data process.

YTD vs. Prior Year total (1,749): 35%  
 Apr 2020 to Apr 2019: 35%  
 Current Yr End trend: 43% of 2018-2019  
 YTD 2019-2020 v. YTD 2018-2019: 44%



The DEW Data Pool is determined by the total number of potential, non-compliant employers who report wages to DEW with at least 4 employees and who's FEIN does not match with any coverage records in the Commission's coverage database. The investigations generated is the number of compliance investigations generated from the pool. The investigations initiated is the number of compliance investigations initiated from those that were generated.



**Carryover Caseload:**

The Compliance Division closed April 2020 with 200 cases active, compared to an active caseload of 501 at the close of April 2019.

**Cases Resolved:**

For the month of April 2020, Compliance Division staff closed-out 108 cases.

**Compliance Fines:**

In April 2020, the Compliance Division collected \$23,843 in fines and penalties. Year to Date, the Compliance Division has collected \$971,272 in fines and penalties.

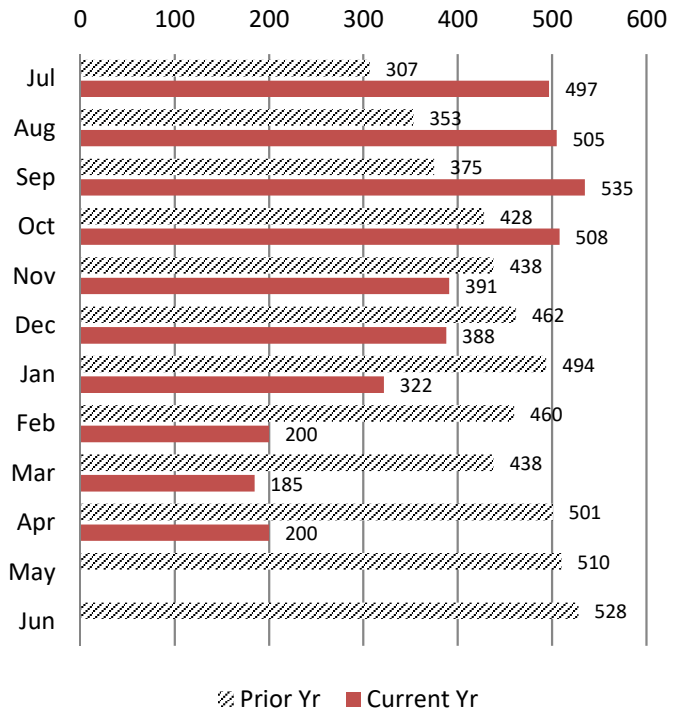
Year to Date vs Prior Year Total (\$1,688,380): 58%

April 2019 vs. April 2020: 11%

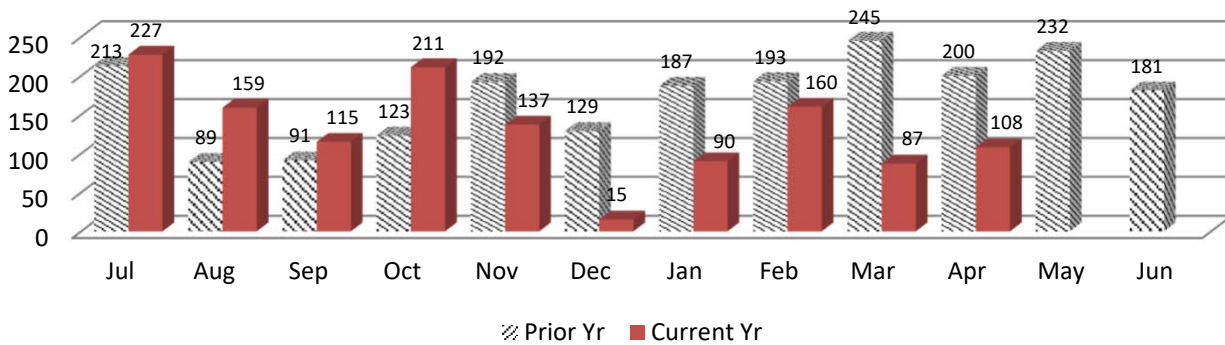
Current Year End trend is 69% of 2018-2019

YTD 2018-19 (July - Apr) vs YTD 2018-2019: 73%

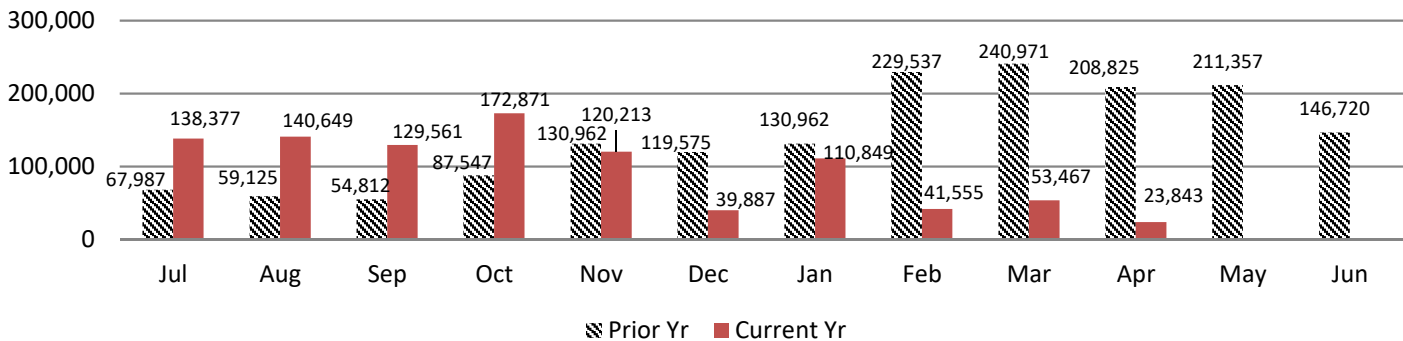
**Caseload Pending v. Prior Year**



**Cases Resolved v. Prior Year**



**Compliance Fines Collected v. Prior Year**

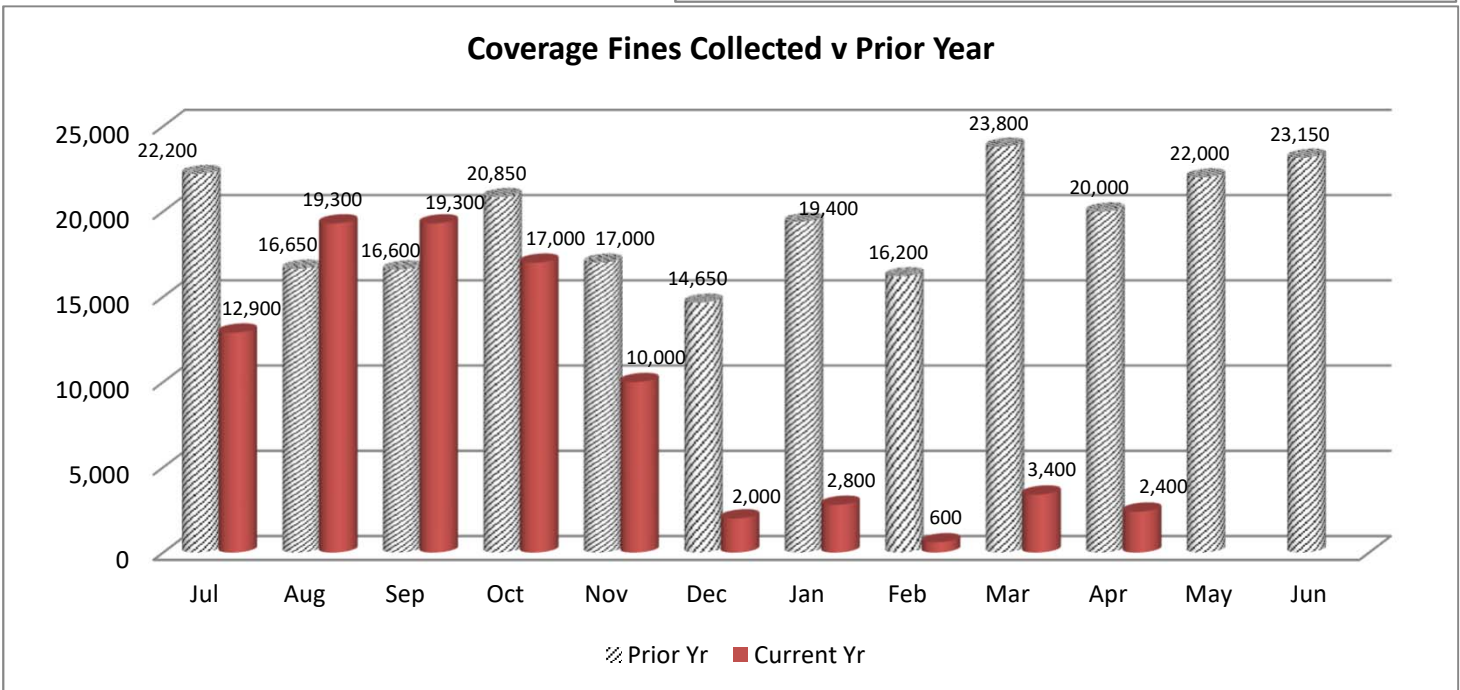
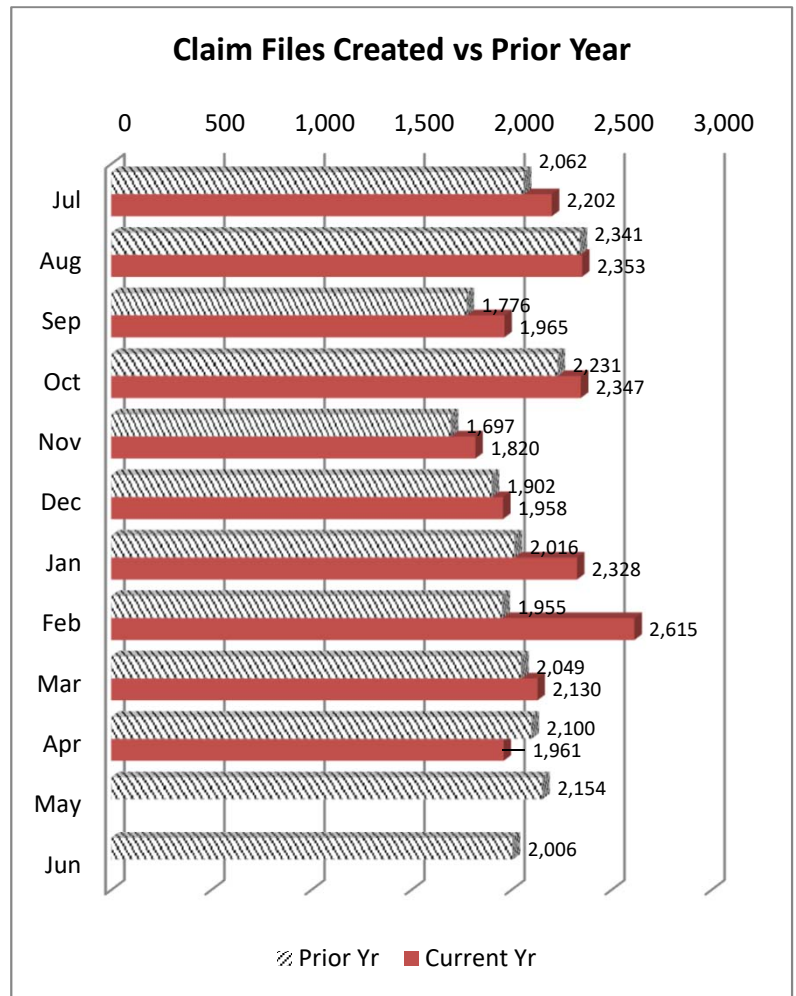


**WCC Claim Files:**

In April 2020, the Coverage Division received a total of 1,961 WCC Claim files. Of these, 1,732 were created through proper carrier filing of a 12A, and 229 were generated as a result of a Form 50 claim filing. Year to Date 21,679 Claim files have been created which is 89% of claim file volume prior year (24,289).

**Coverage Fines:**

The Coverage Division collected \$2,400 in fine revenue in April 2020, as compared to \$20,000 in Coverage fines/penalties accrued during April 2019. Year on Year, Coverage fines are at 39% of collections for prior year.

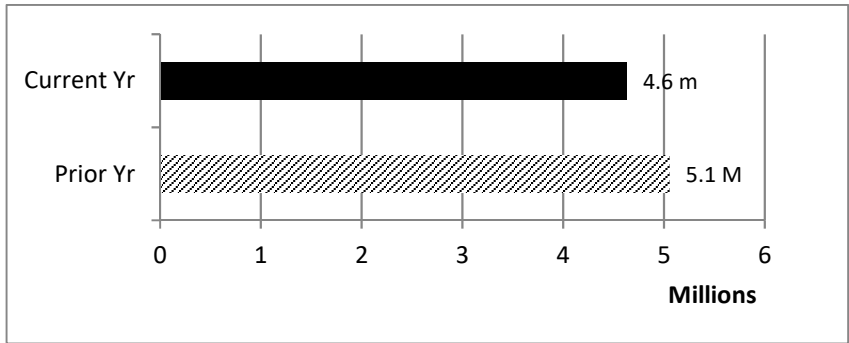




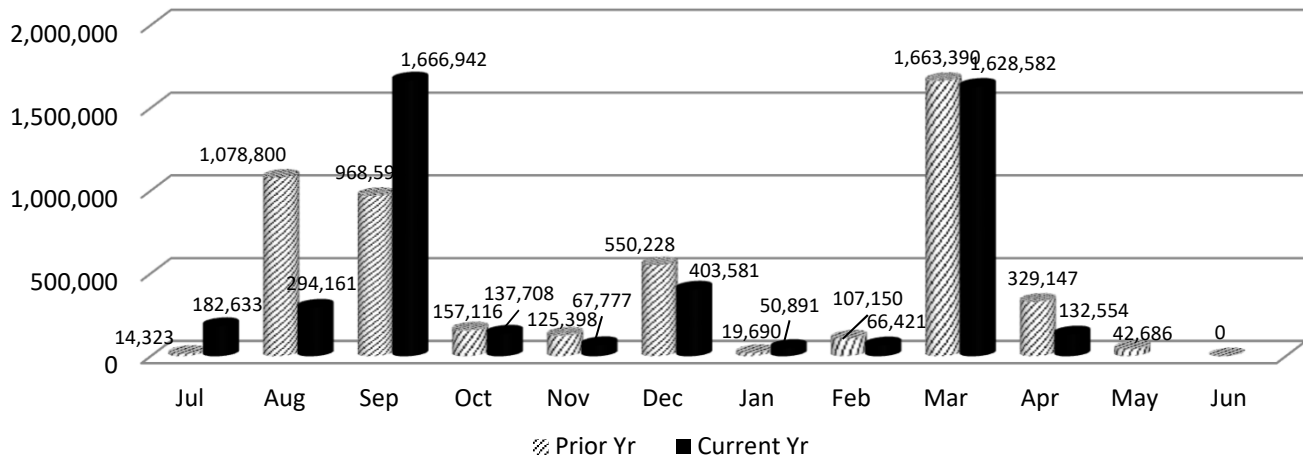
During the month of April 2020, the Self Insurance Division:

- \* collected \$132,554 in self-insurance tax.
- \* added 10 new self-insurers.
- \* conducted 4 Self Insurance audits.

Year to Date, Self Insurance tax revenue is trending at 92% of prior year and 40 Self Insurance audits have been completed.



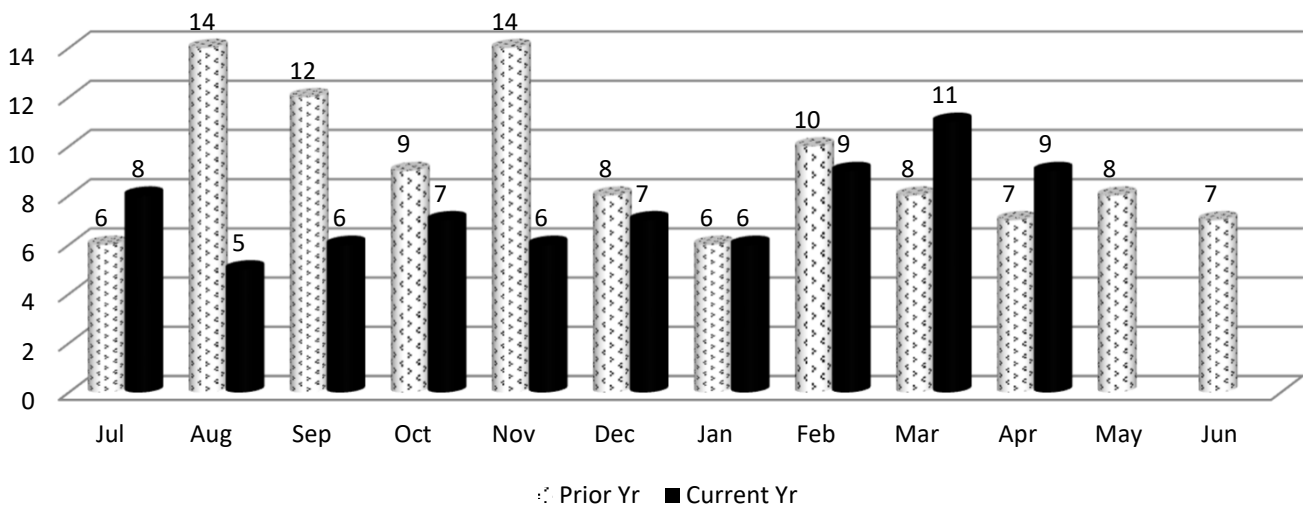
**Self Insurance Tax Collections v. Prior Year**



**IMS MEDICAL SERVICES DIVISION**

In April 2020, the Medical Services Division began the month with 11 bills pending review, received an additional 7 bills for review, conducted 9 bill reviews and ended the month with 9 bills pending.

**Medical Bills Pending Review v. Prior Year**



# TAB 6

# State of South Carolina

1333 Main Street, 5<sup>th</sup> Floor  
P.O. Box 1715  
Columbia, S.C. 29202-1715



TEL: (803) 737-5700  
www.wcc.sc.gov

## *Workers' Compensation Commission* MEMORANDUM

To: Gary Cannon, Executive Director  
From: Sonji Spann, Claims Director  
Date: May 12, 2020  
Re: Claims Department –May 2020 Full Commission Report

Attached is Claims Department activity for the period ending April 30, 2020. The format of the Claims Department report highlights the key workflow benchmarks. Comparison to last month and last year can be found on the attached excel spread sheet.

Processed	15,978
Closed	2,317
Reviewed	3,460
Revenue	\$10,200
Total Fines	51
Form 18 Fines	42
EDI – 18's	2,864
Emailed -18's	2,051
USPS-18's	122
Form 61's Rec'd	733
Form 61's App	731
Third Party Settlements Rec'd	15
Third Party Settlements Processed	16

# Claims Department Statistical Report

## Statistics For FY19-20

Period ending April 30, 2019

Claims Services	Jan	Feb	March	April	Totals YTD FY19-20
<b>Forms 15-I</b>	1,537	1,132	1,312	1,174	11,682
<b>Forms 15-II/Forms 17</b>	1,300	1,015	1,071	891	9,647
<b>Forms 16 for PP/Disf</b>	242	262	196	207	2,115
<b>Forms 18</b>	5,839	5,660	5,939	5,168	49,734
<b>Forms 20</b>	842	668	648	622	6,585
<b>Form 50 Claims Only</b>	411	321	320	240	2,862
<b>Form 61</b>	666	635	863	733	7,047
<b>Letters of Rep</b>	281	231	250	177	2,148
<b>Clinchers</b>	1,101	700	1,007	941	8,172
<b>Third Party Settlements</b>	1	13	16	15	131
<b>SSA Requests for Info</b>	40	80	47	33	610
<b>Cases Closed</b>	3,092	2,159	2,432	2,317	22,596
<b>Cases Reviewed</b>	3,138	2,509	3,435	3,460	27,131
<b>Total Fines Assessed</b>		13	77	51	1,202
<b>Form 18 Fines</b>			56	42	1,042
<b>Total Amt Paid</b>		\$ 2,800	\$ 11,300	\$ 10,200	\$ 218,600

# TAB 7

State of South Carolina



1333 Main Street  
P.O. Box 1715  
Columbia, S.C. 29202-1715

Tel: (803) 737-5700  
Fax: (803) 737-1234  
www.wcc.sc.gov

**Workers' Compensation Commission**

May 8, 2020

**To:** Gary M. Cannon  
Executive Director

**From:** Amy A. Bracy  
Judicial Director

**RE: Monthly Judicial Report for April 2020**

During the month of April, the Judicial Department processed eight hundred nine (809) requests for hearings, eighty-seven (87) Motions and one hundred forty-seven (147) clincher conference requests that were sent to the Jurisdictional Commissioners.

There were twenty (20) Single Commissioner Hearings conducted during the past month, forty-eight (48) pre-hearing conferences held and zero (0) Full Commission hearings held. A total of four hundred seventy-eight (478) Orders were served at the single Commissioner level, forty (40) of those were Decision and Orders that resulted from hearings that went on the record and one hundred thirty-seven (137) were Motion Orders that were a result of Motions ruled upon by Commissioners.

The Informal Conference system conducted two hundred twenty-one (221) hearings during the last month.

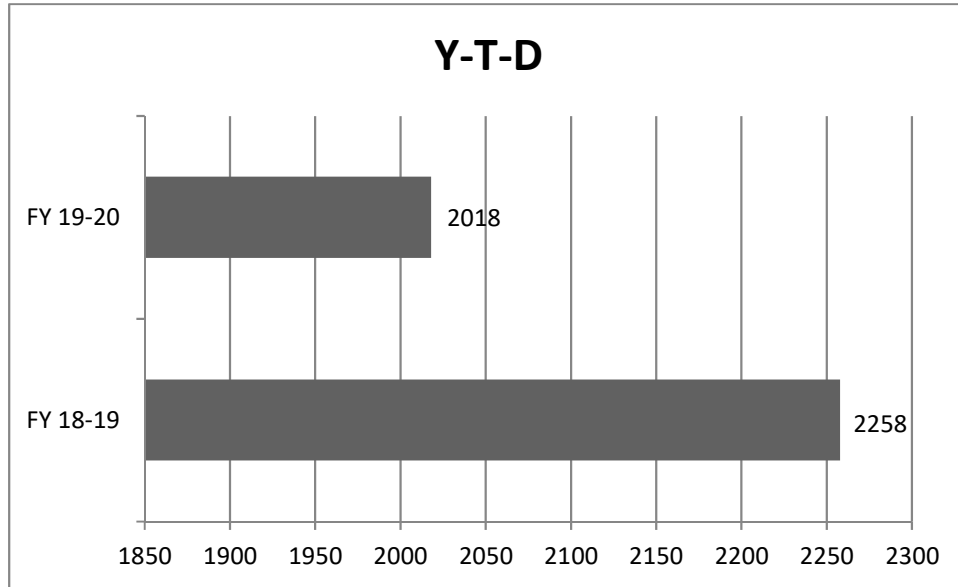
There were thirty-nine (39) regulatory mediations scheduled and thirty (30) requested mediations. The Judicial Department was notified of forty-three (43) matters resolved in mediation, with the receipt of Forms 70.

In the month of April, Judicial received twelve (12) Notice of Intent to Appeal to the Court of Appeals and zero (0) to the Circuit Court.

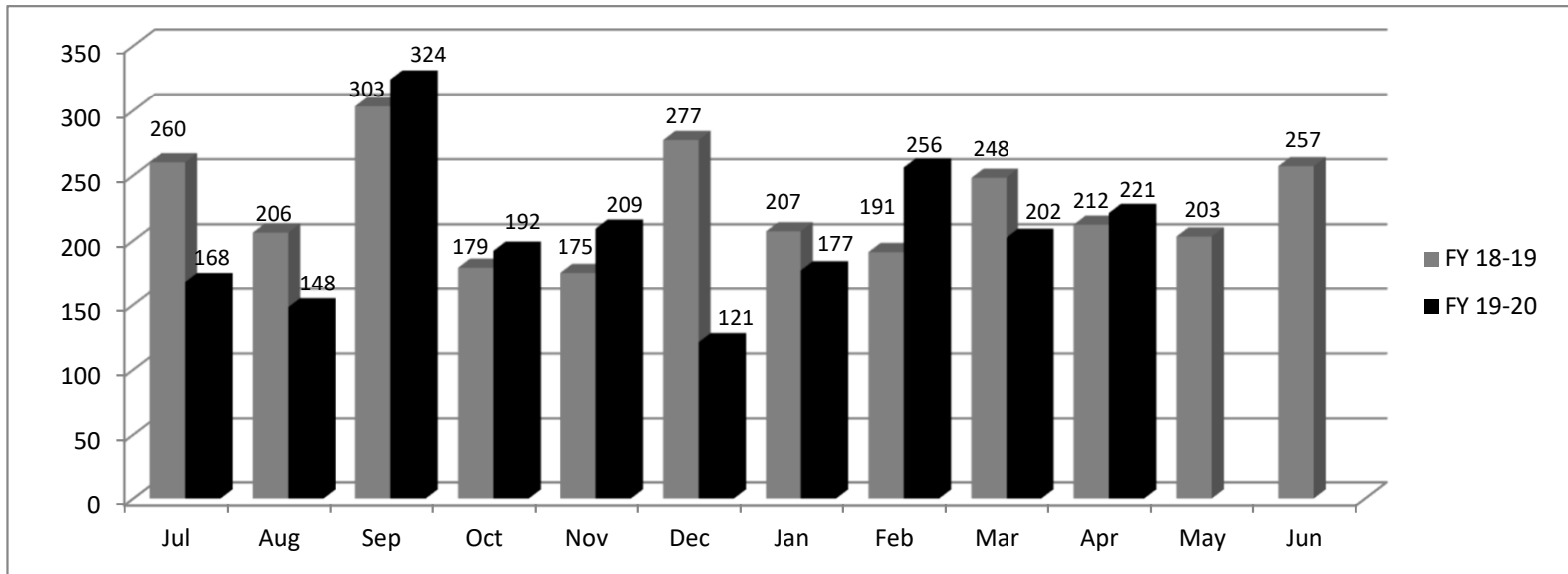
	Jan	Feb	March	April	Totals YTD 2019-2020
<b>Claimant Pleadings</b>	630	591	592	508	<b>5,497</b>
<b>Defense Response to Pleadings</b>	348	453	561	443	<b>4,574</b>
<b>Defense Pleadings</b>	341	309	297	301	<b>2,814</b>
<b>Motions</b>	149	104	113	87	<b>1,139</b>
<b>Form 30</b>	8	20	15	7	<b>116</b>
<b>FC Hearings Held</b>	1	5	5	0	<b>57</b>
<b>FC Orders Served</b>	9	13	8	9	<b>122</b>
<b>Single Comm. Hearings Held</b>	64	53	37	20	<b>560</b>
<b>Single Comm. Orders Served</b>	217	222	222	186	<b>2,095</b>
<b>Single Comm. Pre-Hearing Conf Held</b>	30	25	60	48	<b>324</b>
<b>Consent Orders</b>	324	248	306	235	<b>2,676</b>
<b>Administrative Orders</b>	24	19	19	57	<b>255</b>
<b>Clincher Conference Requested</b>	119	168	149	147	<b>1,437</b>
<b>Informal Conference Requested</b>	470	371	347	257	<b>3,093</b>
<b>Informal Conference Conducted</b>	177	256	202	221	<b>2,018</b>
<b>Regulatory Mediations</b>	30	31	46	39	<b>363</b>
<b>Requested Mediations</b>	64	59	60	30	<b>482</b>
<b>Ordered Mediations</b>	2	2	5	1	<b>18</b>
<b>Mediation Resolved</b>	43	56	48	43	<b>504</b>
<b>Mediation Impasse</b>	17	14	19	11	<b>161</b>
<b>Mediation Held; Issues Pending</b>	1	5	0	0	<b>7</b>
<b>Claim Settled Prior to Mediation</b>	23	10	10	15	<b>126</b>
<b>Mediation Not Complete in 60 days</b>	3	4	2	5	<b>30</b>

**Informal Conf. Conducted**

	FY 18-19	FY 19-20
Jul	260	168
Aug	206	148
Sep	303	324
Oct	179	192
Nov	175	209
Dec	277	121
Jan	207	177
Feb	191	256
Mar	248	202
Apr	212	221
May	203	
Jun	257	
<b>Total</b>	<b>2718</b>	<b>2018</b>



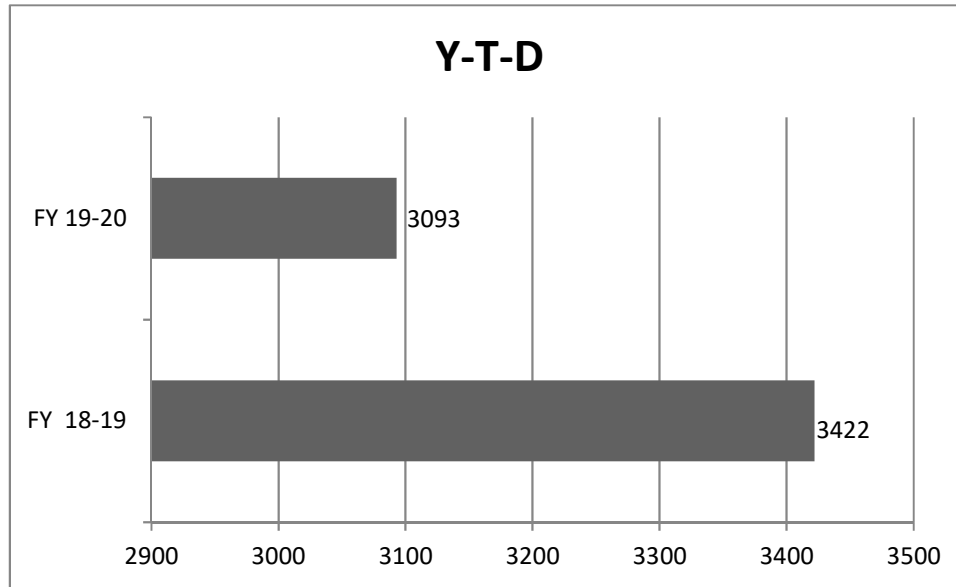
	FY 18-19	FY 19-20
<b>Y-T-D</b>	<b>2258</b>	<b>2018</b>



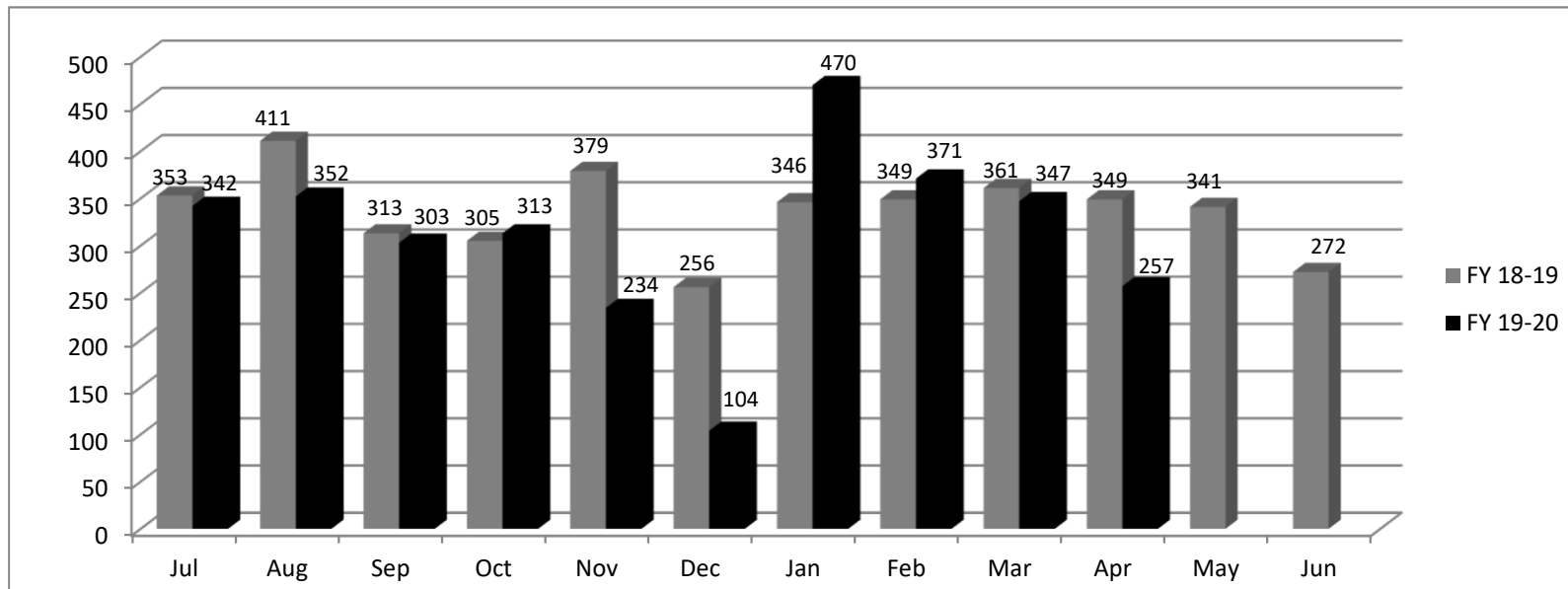


**Informal Conf. Requested**

	FY 18-19	FY 19-20
Jul	353	342
Aug	411	352
Sep	313	303
Oct	305	313
Nov	379	234
Dec	256	104
Jan	346	470
Feb	349	371
Mar	361	347
Apr	349	257
May	341	
Jun	272	
<b>Total</b>	<b>4035</b>	<b>3093</b>



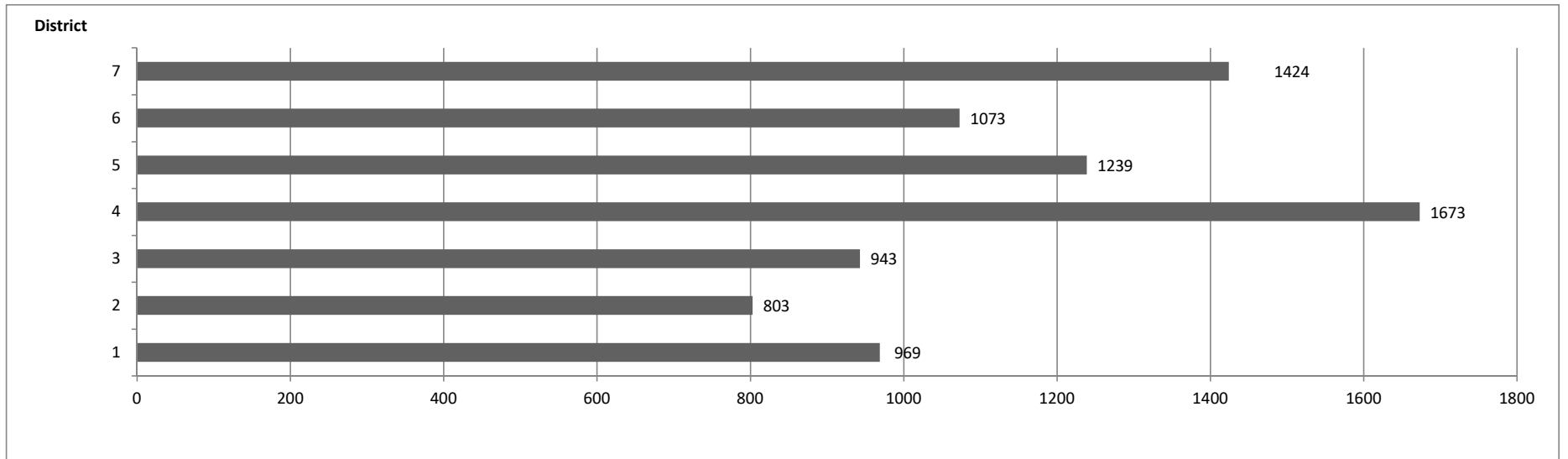
	FY 18-19	FY 19-20
<b>Y-T-D</b>	<b>3422</b>	<b>3093</b>



### Pleadings Assigned - Three Year Comparison by Month

	District 1 Greenville			District 2 Anderson			District 3 Orangeburg			District 4 Charleston			District 5 Florence			District 6 Spartanburg			District 7 Richland		
	19-20	18-19	17-18	19-20	18-19	17-18	19-20	18-19	17-18	19-20	18-19	17-18	19-20	18-19	17-18	19-20	18-19	17-18	19-20	18-19	17-18
Jul	99	88	97	84	98	79	123	114	104	183	183	127	136	147	121	137	110	107	140	144	139
Aug	99	118	113	85	71	97	78	87	120	168	187	172	153	124	134	104	149	107	147	138	159
Sep	101	92	100	77	78	100	98	83	110	174	148	156	108	98	136	104	91	103	131	132	164
Oct	115	112	97	90	98	68	76	115	86	187	204	135	124	119	107	121	130	113	142	160	177
Nov	83	116	116	74	87	83	108	114	92	155	161	159	116	130	131	78	119	120	148	150	148
Dec	81	92	122	65	66	81	80	93	113	140	116	150	99	121	108	104	94	113	117	115	172
Jan	98	89	87	69	69	72	78	114	88	186	170	138	104	104	112	88	114	94	110	134	166
Feb	91	102	75	85	80	84	78	102	88	143	156	125	132	111	139	126	126	119	166	116	163
Mar	112	92	120	96	81	96	134	97	122	187	192	179	131	142	138	111	115	126	183	131	188
Apr	90	84	119	78	76	87	90	76	113	150	157	174	136	103	128	100	86	120	140	123	155
May		112	125		114	88		189	127		211	157		151	126		138	112		183	166
Jun		94	111		103	84		89	126		153	191		121	169		100	129		145	140
<b>Totals</b>	<b>969</b>	<b>1191</b>	1282	<b>803</b>	1021	1019	<b>943</b>	1273	1289	<b>1673</b>	2038	1863	<b>1239</b>	1471	1549	<b>1073</b>	1372	1363	<b>1424</b>	1671	1937

### Pleadings Assigned by District Year to Date



**TAB 8**

**VOC REHAB**

**NO REPORT**

**THIS**

**MONTH**

# TAB 9

# *State of South Carolina*

1333 Main Street, 5<sup>th</sup> Floor  
P.O. Box 1715  
Columbia, S.C. 29202-1715



## *Workers' Compensation Commission*

### **Executive Director's Report Gary M. Cannon**

**May 18, 2020**

#### **Preparation of Return to Work**

In cooperation with the Alexa Stuart, the Department of Administration, and the Office of Human Resources preparing the policies and procedures for the agency employees to return to work and the Commissioners to begin in-person hearings on June 1. This includes participating in conference calls with the Department of Administration on a statewide reentry plan. The statewide reentry plan will include the availability of state contracts for purchasing of PPE items for agency employees and cleaning services. In preparation of the reentry we have purchased face masks, hand sanitizer, dispensers, sanitizing wipes, liquid disinfectant and tote bags. Some items are on back order. We anticipate the items will be shipped before June 1.

#### **Meetings/Activities**

From April 14, 2020 to May 12, 2020, the Executive Director worked in the office 4 days and worked from home the other days and participated in 10 conference calls and numerous telephone calls and emails with the Commissioners, agency employees and stakeholders.

#### **Constituent /Public Information Services**

For the period April 14, 2020 to May 12, 2020, the Executive Director's Office and the General Counsel's office had 406 electronic and personal contacts with claimants or constituents, state agencies, federal agencies, attorneys, service providers, business partners; and letters with congressional offices.

#### **Financial Transactions Activity**

For the period April 14, 2020 to May 12, 2020 the Director's office processed and approved 4 travel expense reports, 80 invoices, and 32 deposits for DOA to process in the SCIES system.

#### **SCWCC Stakeholder Electronic Distribution List**

For the period March 10, 2020 through April 13, 2020, we added three (3) individuals. Due to the receipt of email delivery failures, a total of three (3) email addresses were deleted. A total of 789 individuals currently receive notifications from the Commission.

#### **Advisory Notices**

Since the last Business Meeting our office prepared 2 Advisory and other Notices for stakeholders. They are posted on the Commission's website and were emailed to the distribution list.

# **TAB 10**

# State of South Carolina

1333 Main Street, 5<sup>th</sup> Floor  
P.O. Box 1715  
Columbia, S.C. 29202-1715



TEL: (803) 737-5700  
www.wcc.sc.gov

## Workers' Compensation Commission

### MEMORANDUM

**TO: COMMISSIONERS**

**FROM: Gary Cannon  
Executive Director**

**DATE: May 18, 2020**

**RE: FINANCIAL REPORT - Period ending April 30, 2020**

Attached is the Budget vs. Actual Report for the General Fund and Earmarked Fund for the fiscal year period ending April 30, 2020. The benchmark for this period is 83%.

#### Expenditures

The expenditures for the General Fund are on pages 1-3. The total expenditures in the General Fund (10010000) for this period is \$1.3 million or 48% of budget. Note this includes total \$1.8 million appropriation of non-recurring funds shown on page 2 in Information Services on the Special Item line for the IT Legacy System Modernization project. The Commitment items to the project to date is \$1.2 million.

The expenditures for the Earmarked Fund are on pages 4-10 of the "Budget vs. Actual Report FY2020. The total expenditures for the Earmarked Fund (38440000) are \$3.9 million or 70% of budget. The fund has \$265,240 of Commitments.

#### Revenues

Operating Revenues received by the Earmarked Fund through April 30, 2020 received is \$2.5 million or 78% of budget. The Training Conference Registration Fee (438002000) received is higher than the budgeted amount by \$1,380 which is a result of the six regional training sessions conducted last fall on KERMIT. The Sale of Listing and Labels (448006000) account has received \$102,455 over the budgeted amount. The amount is an anomaly for account. It is most likely a coding error which I am in the process of verifying. If so we will make the appropriate transfer before the end of the fiscal year.

To date we have received \$4.5 million Self-Insurance Tax funds.

**South Carolina Workers' Compensation Commission**  
**Budget vs. Actual Report**  
**FY 2020 As of 4/30/2020**  
**83% of year elapsed**

**Fund 10010000 - GENERAL FUND**

**Administration**

Commitment Item	Commitment Item Description	Current Budget	YTD Expenditures	% Used	Commitments	Remaining Balance
501015	DIRECTOR	135,967	115,572	85%		20,395
501058	CLASSIFIED POS	47,092				47,092
512001	OTHER OPERATING	285,515				
Total OTHER OPERATING:		285,515				285,515
<b>Total Administration:</b>		<b>468,574</b>	<b>115,572</b>	<b>25%</b>	<b>0</b>	<b>353,002</b>

**Executive director**

Commitment Item	Commitment Item Description	Current Budget	YTD Expenditures	% Used	Commitments	Remaining Balance
5030010000	OFFICE SUPPLIES		48			
Total OTHER OPERATING:			48		0	-48
<b>Total Executive director:</b>			<b>48</b>		<b>0</b>	<b>-48</b>

**Inform. services**

Commitment Item	Commitment Item Description	Current Budget	YTD Expenditures	% Used	Commitments	Remaining Balance
5020077000	SERVICES- APP DEV		35,000			
5030067131	PLM- EUC		20,379		5,080	
Total OTHER OPERATING:			55,379		5,080	-60,458
<b>Total Inform. services:</b>			<b>55,379</b>		<b>5,080</b>	<b>-60,458</b>

**Claims**

Commitment Item	Commitment Item Description	Current Budget	YTD Expenditures	% Used	Commitments	Remaining Balance
501058	CLASSIFIED POS	85,159	67,137	79%		18,022
<b>Total Claims:</b>		<b>85,159</b>	<b>67,137</b>	<b>79%</b>		<b>18,022</b>



**South Carolina Workers' Compensation Commission**  
**Budget vs. Actual Report**  
**FY 2020 As of 4/30/2020**  
**83% of year elapsed**

**Fund 10010000 - GENERAL FUND**

**Commissioners**

Commitment Item	Commitment Item Description	Current Budget	YTD Expenditures	% Used	Commitments	Remaining Balance
501026	CHAIRMAN	164,762	140,047	85%		24,715
501033	COMMISSIONER	959,769	815,800	85%		143,969
501050	TAXABLE SUBS		52,303		0	-52,303
501058	CLASSIFIED POS	347,717	286,615	82%		61,102
501070	OTH PERS SVC		4,200			-4,200
<b>Total Commissioners:</b>		<b>1,472,248</b>	<b>1,298,965</b>	<b>88%</b>	<b>0</b>	<b>173,283</b>

**Information Services FY18**

Commitment Item	Commitment Item Description	Current Budget	YTD Expenditures	% Used	Commitments	Remaining Balance
561000	Special Item	1,800,000	104,916	6%	1,246,396	448,688
<b>Total Information Services FY18:</b>		<b>1,800,000</b>	<b>104,916</b>	<b>6%</b>	<b>1,246,396</b>	<b>448,688</b>

**Insurance & Medical**

Commitment Item	Commitment Item Description	Current Budget	YTD Expenditures	% Used	Commitments	Remaining Balance
501058	CLASSIFIED POS	29,646	25,500	86%		4,146
501070	OTH PERS SVC		600			-600
<b>Total Insurance &amp; Medical:</b>		<b>29,646</b>	<b>26,100</b>	<b>88%</b>		<b>3,546</b>

**Judicial**

Commitment Item	Commitment Item Description	Current Budget	YTD Expenditures	% Used	Commitments	Remaining Balance
501058	CLASSIFIED POS	29,267				29,267
<b>Total Judicial:</b>		<b>29,267</b>				<b>29,267</b>

**Employer Contributions**

Commitment Item	Commitment Item Description	Current Budget	YTD Expenditures	% Used	Commitments	Remaining Balance
513000	EMPLOYER CONTRIB	704,060	520,657	74%		183,403
<b>Total Employer Contributions:</b>		<b>704,060</b>	<b>520,657</b>	<b>74%</b>		<b>183,403</b>

**South Carolina Workers' Compensation Commission**  
**Budget vs. Actual Report**  
**FY 2020 As of 4/30/2020**  
**83% of year elapsed**

**Fund 10010000 - GENERAL FUND**

<b>Total GENERAL FUND:</b>	4,588,954	2,188,773	48%	1,251,476	1,148,704
----------------------------	-----------	-----------	-----	-----------	-----------

**South Carolina Workers' Compensation Commission**  
**Budget vs. Actual Report**  
**FY 2020 As of 4/30/2020**  
**83% of year elapsed**

**Fund 38440000 - EARMARKED FUND**

**Administration**

Commitment Item	Commitment Item Description	Current Budget	YTD Expenditures	% Used	Commitments	Remaining Balance
501058	CLASSIFIED POS	626,985	153,555	24%		473,430
501070	OTH PERS SVC	11,324	1,800	16%		9,524
512001	OTHER OPERATING	2,625,713				
5020030000	PRINT / BIND / ADV		212			
5020080000	FREIGHT EXPRESS DELV		98		304	
5020120000	CELLULAR PHONE SVCS		7,670		401	
5021010000	LEGAL SERVICES		2,259			
5021010005	LEGAL SRV-REPORTER		310			
5021020000	ATTORNEY FEES		3,008			
5021490000	AUDIT ACCT FINANCE		139			
5021530000	CATERED MEALS		21,503			
5024990000	OTH CNT-NON-IT & REA		1,250			
5030010000	OFFICE SUPPLIES		7,958		26	
5030010002	OFF SUP - MIN OFF EQ		322			
5030010004	SUBSCRIPTIONS		6,998		3,958	
5030030000	PRINTED ITEMS		4,039		29	
5030067101	PRGM LIC - APP SUPP		30,095		2,964	
5030067130	EQUIP&SUPP- EUC		45			
5030067170	EQUIP&SUPP- PRINT EU		5,023		2,386	
5030070000	POSTAGE		21,943		14,360	
5030090000	COMMUNICATION SUPP		999			
5031010001	FURNISHINGS		1,322			
5031639500	OTH SECURITY EXP SUPL		34			
5032820000	INSTRUCTIONAL MAT		367		1,408	
5033090000	EMPLOYEE RECOG AWARD		1,370			
5033990000	OTHER SUPPLIES		38			
5040010000	OPER LSE-OFC EQ RENT		1,897			
5040057000	IT-OPER LS-CONT RENT				1,023	
5040060000	OPER-RENT-NON ST OWN		349,041		72,996	
5040070000	OPER-RNT-ST OWN RL P		120			
5040490000	OPER LSE-RENT-OTHER		11,338		12,636	
5040490002	OPER-RENT-OTH-RM&VID		5,920			

**South Carolina Workers' Compensation Commission**  
**Budget vs. Actual Report**  
**FY 2020 As of 4/30/2020**  
**83% of year elapsed**

**Fund 38440000 - EARMARKED FUND**

5040490003	OPER LSE-RENT-PO BOX		1,402			
5040510000	INSURANCE-STATE		2,526			
5041010000	DUES & MEMBER FEES		5,432			
5041020000	FEES AND FINES		39			
5050010000	IN ST-MEALS-NON-REP		507		60	
5050020000	IN ST-LODGING		2,782			
5050040000	IN ST-AUTO MILEAGE		48			
5050041000	HR-IN ST-AUTO MILES		2,182		48	
5050060000	IN ST-MISC TR EXP		35		735	
5050070000	IN ST-REGISTR FEES		235			
5050510000	OUT ST-MEALS-NON-REP		180			
5050570000	OUT ST-REGISTR FEES		1,320			
5051540000	LEASED CAR-ST OWNED		34,948			
Total OTHER OPERATING:		2,625,713	536,953	20%	113,336	1,975,424
<b>Total Administration:</b>		<b>3,264,022</b>	<b>692,308</b>	<b>21%</b>	<b>113,336</b>	<b>2,458,378</b>

**General counsel**

Commitment Item	Commitment Item Description	Current Budget	YTD Expenditures	% Used	Commitments	Remaining Balance
5030070000	POSTAGE		12			
5041020000	FEES AND FINES		25			
Total OTHER OPERATING:			37		0	-37
<b>Total General counsel:</b>			<b>37</b>		<b>0</b>	<b>-37</b>

**South Carolina Workers' Compensation Commission**  
**Budget vs. Actual Report**  
**FY 2020 As of 4/30/2020**  
**83% of year elapsed**

**Fund 38440000 - EARMARKED FUND**

**Inform. services**

Commitment Item	Commitment Item Description	Current Budget	YTD Expenditures	% Used	Commitments	Remaining Balance
501058	CLASSIFIED POS		287,275			-287,275
501070	OTH PERS SVC		1,800			-1,800
5020077100	SERVICES- APP SUP		562		972	
5020077200	SERVICES- SERVERS		70,000		51,840	
5020077220	SERVICES- VOICENET		17,735		6,480	
5020077230	IT CONTRACTORS		824,038		46,316	
5020077240	DP SERVICES – STATE		151,814			
5020080000	FREIGHT EXPRESS DELV		69		304	
5020120000	CELLULAR PHONE SVCS		3,671		1,806	
5021330000	CONTR-GOVT/NONPRFIT		39,000			
5021469316	SECURITY ALARM SRVC		5,177		46	
5021540000	NON-IT OTHER PRO SRV		23,511		15,825	
5030010000	OFFICE SUPPLIES		3,554		1,229	
5030067101	PRGM LIC - APP SUPP		44,934		11,400	
5030067130	EQUIP&SUPP- EUC		941			
5030067131	PLM- EUC				769	
5030067141	PLM- ITSD		483			
5030067170	EQUIP&SUPP- PRINT EU		15,609		192	
5031469316	SCRTY ALRM SYS SUPPL		909			
5031639500	OTH SECURTY EXP SUPL		123			
5040057000	IT-OPER LS-CONT RENT		3,528		3,095	
5050010000	IN ST-MEALS-NON-REP		556			
5050020000	IN ST-LODGING		3,109		-	
5050031000	HR-IN ST-AIR TRANS		604			
5050041000	HR-IN ST-AUTO MILES		1,220			
5050050000	IN ST-OTHER TRANS		236			
5050060000	IN ST-MISC TR EXP		60			
5050070000	IN ST-REGISTR FEES		59			
5050570000	OUT ST-REGISTR FEES		915			
<b>Total OTHER OPERATING:</b>			<b>1,212,416</b>		<b>140,275</b>	<b>-1,352,690</b>
<b>Total Inform. services:</b>			<b>1,501,491</b>		<b>140,275</b>	<b>-1,641,765</b>

**South Carolina Workers' Compensation Commission**  
**Budget vs. Actual Report**  
**FY 2020 As of 4/30/2020**  
**83% of year elapsed**

**Fund 38440000 - EARMARKED FUND**

**Ombudsman**

Commitment Item	Commitment Item Description	Current Budget	YTD Expenditures	% Used	Commitments	Remaining Balance
5030070000	POSTAGE		14			
Total OTHER OPERATING:			14		0	-14
<b>Total Ombudsman:</b>			<b>14</b>		<b>0</b>	<b>-14</b>

**Claims**

Commitment Item	Commitment Item Description	Current Budget	YTD Expenditures	% Used	Commitments	Remaining Balance
501058	CLASSIFIED POS	280,850	194,343	69%		86,507
501070	OTH PERS SVC	3,600	3,600	100%		0
512001	OTHER OPERATING	19,700				
5020080000	FREIGHT EXPRESS DELV		69		495	
5020120000	CELLULAR PHONE SVCS		318			
5030010000	OFFICE SUPPLIES		704		1,287	
5040510000	INSURANCE-STATE		1,263			
5050010000	IN ST-MEALS-NON-REP		102			
5050020000	IN ST-LODGING		931			
5050041000	HR-IN ST-AUTO MILES		182			
Total OTHER OPERATING:		19,700	3,568	18%	1,783	14,349
<b>Total Claims:</b>		<b>304,150</b>	<b>201,511</b>	<b>66%</b>	<b>1,783</b>	<b>100,856</b>

**South Carolina Workers' Compensation Commission**  
**Budget vs. Actual Report**  
**FY 2020 As of 4/30/2020**  
**83% of year elapsed**

**Fund 38440000 - EARMARKED FUND**

**Commissioners**

Commitment Item	Commitment Item Description	Current Budget	YTD Expenditures	% Used	Commitments	Remaining Balance
501050	TAXABLE SUBS	70,000	21,101	30%	0	48,899
512001	OTHER OPERATING	230,700				
5020080000	FREIGHT EXPRESS DELV		177		304	
5020120000	CELLULAR PHONE SVCS		4,754		59	
5021010000	LEGAL SERVICES		60,003			
5021010003	LEGAL SRV-TRANSCRIPT		1,769			
5021010005	LEGAL SRV-REPORTER		16,195			
5021410000	EDUC & TRNG-STATE		75			
5021540000	NON-IT OTHER PRO SRV		160			
5030010000	OFFICE SUPPLIES		680		1,267	
5040510000	INSURANCE-STATE		7,437			
5050010000	IN ST-MEALS-NON-REP		654			
5050020000	IN ST-LODGING		4,715			
5050031000	HR-IN ST-AIR TRANS		121			
5050040000	IN ST-AUTO MILEAGE		491			
5050041000	HR-IN ST-AUTO MILES		21,018			
5050050000	IN ST-OTHER TRANS		80			
5050060000	IN ST-MISC TR EXP		47			
5050080000	IN ST-SUBSIST ALLOW		11,013			
5050510000	OUT ST-MEALS-NON-REP		245			
5050541000	HR-OUT ST-AUTO MILES		204			
5050560000	OUT ST-MISC TR EXPEN		175			
5050570000	OUT ST-REGISTR FEES		585			
<b>Total OTHER OPERATING:</b>		<b>230,700</b>	<b>130,596</b>	<b>57%</b>	<b>1,630</b>	<b>98,474</b>
<b>Total Commissioners:</b>		<b>300,700</b>	<b>151,697</b>	<b>50%</b>	<b>1,630</b>	<b>147,373</b>

**South Carolina Workers' Compensation Commission**  
**Budget vs. Actual Report**  
**FY 2020 As of 4/30/2020**  
**83% of year elapsed**

**Fund 38440000 - EARMARKED FUND**

**Insurance & Medical**

Commitment Item	Commitment Item Description	Current Budget	YTD Expenditures	% Used	Commitments	Remaining Balance
501058	CLASSIFIED POS	459,463	322,308	70%		137,155
501070	OTH PERS SVC	22,881	8,464	37%		14,417
512001	OTHER OPERATING	54,500				
5020080000	FREIGHT EXPRESS DELV		69		495	
5020120000	CELLULAR PHONE SVCS		224			
5021010000	LEGAL SERVICES		65		70	
5021540000	NON-IT OTHER PRO SRV		23,208		2,515	
5024990000	OTH CNT-NON-IT & REA		1,060			
5030010000	OFFICE SUPPLIES		378		1,636	
5030010004	SUBSCRIPTIONS		445			
5030030000	PRINTED ITEMS		254			
5040060000	OPER-RENT-NON ST OWN		838		905	
5040510000	INSURANCE-STATE		1,544			
5050010000	IN ST-MEALS-NON-REP		548			
5050020000	IN ST-LODGING		2,972			
5050031000	HR-IN ST-AIR TRANS		87			
5050041000	HR-IN ST-AUTO MILES		1,865		171	
5050070000	IN ST-REGISTR FEES		2,150			
5050510000	OUT ST-MEALS-NON-REP		190			
5050520000	OUT ST-LODGING		1,063			
5050541000	HR-OUT ST-AUTO MILES		184			
5050570000	OUT ST-REGISTR FEES		440			
5051520000	REPORTABLE MEALS				10	
<b>Total OTHER OPERATING:</b>		<b>54,500</b>	<b>37,583</b>	<b>69%</b>	<b>5,802</b>	<b>11,115</b>
<b>Total Insurance &amp; Medical:</b>		<b>536,844</b>	<b>368,355</b>	<b>69%</b>	<b>5,802</b>	<b>162,688</b>



**South Carolina Workers' Compensation Commission**  
**Budget vs. Actual Report**  
**FY 2020 As of 4/30/2020**  
**83% of year elapsed**

**Fund 38440000 - EARMARKED FUND**

**Judicial**

Commitment Item	Commitment Item Description	Current Budget	YTD Expenditures	% Used	Commitments	Remaining Balance
501058	CLASSIFIED POS	452,294	375,328	83%		76,966
501070	OTH PERS SVC	41,076	34,441	84%		6,635
512001	OTHER OPERATING	12,800				
5020080000	FREIGHT EXPRESS DELV		69		495	
5020120000	CELLULAR PHONE SVCS		314			
5021010000	LEGAL SERVICES		1,750			
5021010003	LEGAL SRV-TRANSCRIPT		182			
5021010005	LEGAL SRV-REPORTER		463			
5030010000	OFFICE SUPPLIES		116		1,921	
5040510000	INSURANCE-STATE		1,263			
5050010000	IN ST-MEALS-NON-REP		740			
5050020000	IN ST-LODGING		1,831			
5050041000	HR-IN ST-AUTO MILES		595			
5050070000	IN ST-REGISTR FEES		600			
5051520000	REPORTABLE MEALS		674			
<b>Total OTHER OPERATING:</b>		<b>12,800</b>	<b>8,594</b>	<b>67%</b>	<b>2,416</b>	<b>1,790</b>
<b>Total Judicial:</b>		<b>506,170</b>	<b>418,363</b>	<b>83%</b>	<b>2,416</b>	<b>85,392</b>

**Employer Contributions**

Commitment Item	Commitment Item Description	Current Budget	YTD Expenditures	% Used	Commitments	Remaining Balance
513000	EMPLOYER CONTRIB	695,959	568,921	82%	0	127,038
<b>Total Employer Contributions:</b>		<b>695,959</b>	<b>568,921</b>	<b>82%</b>	<b>0</b>	<b>127,038</b>

<b>Total EARMARKED FUND:</b>		<b>5,607,845</b>	<b>3,902,698</b>	<b>70%</b>	<b>265,240</b>	<b>1,439,907</b>
------------------------------	--	------------------	------------------	------------	----------------	------------------

**South Carolina Workers' Compensation Commission**

**Commitments**

**FY 2020 As of 4/30/2020**

**Fund 10010000 - GENERAL FUND**

**Inform. services**

Commitment Item	Commitment Item Description	Vendor	Commitment
5030067131	PLM- EUC	SHI INTERNATIONAL CORP	5,080
<b>Total Inform. services:</b>			<b>5,080</b>

**Information Services FY18**

Commitment Item	Commitment Item Description	Vendor	Commitment
5020077230	IT CONTRACTORS	TAPFIN PROCESS SOLUTIONS	1,246,396
<b>Total Information Services FY18:</b>			<b>1,246,396</b>

<b>Total GENERAL FUND:</b>			<b>1,251,476</b>
----------------------------	--	--	------------------

**Fund 38440000 - EARMARKED FUND**

**Administration**

Commitment Item	Commitment Item Description	Vendor	Commitment
5020120000	CELLULAR PHONE SVCS	VERIZON WIRELESS	401
5030010000	OFFICE SUPPLIES	STAPLES BUSINESS ADVANTAGE	26
5030010004	SUBSCRIPTIONS	WEST PUBLISHING CORPORATION	3,958
5030030000	PRINTED ITEMS	PINE PRESS PRINTING	29
5030067101	PRGM LIC - APP SUPP	WEST PUBLISHING CORPORATION	2,964
5030067170	EQUIP&SUPP- PRINT EU	FORMS & SUPPLY INC	1,641
5030067170	EQUIP&SUPP- PRINT EU	MAJOR BUSINESS MACHINES	745
5030070000	POSTAGE	NEOFUNDS BY NEOPOST	1,400
5030070000	POSTAGE	US POSTAL SERVICE	12,960
5032820000	INSTRUCTIONAL MAT	PINE PRESS PRINTING	1,408
5040057000	IT-OPER LS-CONT RENT	XEROX CORPORATION	1,023
5040060000	OPER-RENT-NON ST OWN	GALIUM 1333 MAIN LLC	72,996
5040490000	OPER LSE-RENT-OTHER	REPUBLIC PARKING SYSTEM INC	12,636
<b>Total Administration:</b>			<b>112,188</b>

**Inform. services**

Any items with vendor "Not assigned" are pending financial adjustments. Any commitment on the Budget vs. Actual Report that is missing from this list is a travel commitment.

**South Carolina Workers' Compensation Commission**  
**Commitments**  
**FY 2020 As of 4/30/2020**

**Fund 38440000 - EARMARKED FUND**

Commitment Item	Commitment Item Description	Vendor	Commitment
5020077100	SERVICES- APP SUP	BIS DIGITAL, INC.	972
5020077200	SERVICES- SERVERS	SHI INTERNATIONAL CORP	51,840
5020077220	SERVICES- VOICENET	NWN CORPORATION	6,480
5020077230	IT CONTRACTORS	TAPFIN PROCESS SOLUTIONS	46,316
5020080000	FREIGHT EXPRESS DELV	FEDEX	304
5020120000	CELLULAR PHONE SVCS	VERIZON WIRELESS	1,806
5021469316	SECURITY ALARM SRVC	SONITROL SECURITY SYSTEMS	46
5021540000	NON-IT OTHER PRO SRV	HYLAND SOFTWARE INC	15,825
5030010000	OFFICE SUPPLIES	FORMS & SUPPLY INC	1,229
5030067131	PLM- EUC	SHI INTERNATIONAL CORP	769
5030067170	EQUIP&SUPP- PRINT EU	US INK AND TONER INC	192
5040057000	IT-OPER LS-CONT RENT	XEROX	1,401
5040057000	IT-OPER LS-CONT RENT	XEROX CORPORATION	1,693
<b>Total Inform. services:</b>			<b>128,875</b>

**Claims**

Commitment Item	Commitment Item Description	Vendor	Commitment
5020080000	FREIGHT EXPRESS DELV	FEDEX	495
5030010000	OFFICE SUPPLIES	FORMS & SUPPLY INC	1,251
5030010000	OFFICE SUPPLIES	STAPLES BUSINESS ADVANTAGE	36
<b>Total Claims:</b>			<b>1,783</b>

**Commissioners**

Commitment Item	Commitment Item Description	Vendor	Commitment
5020120000	CELLULAR PHONE SVCS	VERIZON WIRELESS	59
5030010000	OFFICE SUPPLIES	FORMS & SUPPLY INC	929
5030010000	OFFICE SUPPLIES	STAPLES BUSINESS ADVANTAGE	338
<b>Total Commissioners:</b>			<b>1,326</b>

**Insurance & Medical**

Any items with vendor "Not assigned" are pending financial adjustments. Any commitment on the Budget vs. Actual Report that is missing from this list is a travel commitment.

**South Carolina Workers' Compensation Commission**  
**Commitments**  
**FY 2020 As of 4/30/2020**

**Fund 38440000 - EARMARKED FUND**

Commitment Item	Commitment Item Description	Vendor	Commitment
5020080000	FREIGHT EXPRESS DELV	FEDEX	495
5021010000	LEGAL SERVICES	UPSTATE LEGAL SUPPORT SERVICES L	70
5021540000	NON-IT OTHER PRO SRV	A WOMANS TOUCH LLC	610
5021540000	NON-IT OTHER PRO SRV	LUMLEY INVESTIGATIONS LLC	378
5021540000	NON-IT OTHER PRO SRV	TPT INVESTIGATIONS LLC	320
5021540000	NON-IT OTHER PRO SRV	WHITESSELL INVESTIGATIVE SERVICES	1,207
5030010000	OFFICE SUPPLIES	STAPLES BUSINESS ADVANTAGE	790
5040060000	OPER-RENT-NON ST OWN	GALIUM 1333 MAIN LLC	905
<b>Total Insurance &amp; Medical:</b>			<b>4,775</b>

**Judicial**

Commitment Item	Commitment Item Description	Vendor	Commitment
5020080000	FREIGHT EXPRESS DELV	FEDEX	495
5030010000	OFFICE SUPPLIES	FORMS & SUPPLY INC	1,126
5030010000	OFFICE SUPPLIES	STAPLES BUSINESS ADVANTAGE	795
<b>Total Judicial:</b>			<b>2,416</b>

<b>Total EARMARKED FUND:</b>			<b>264,217</b>
------------------------------	--	--	----------------

Any items with vendor "Not assigned" are pending financial adjustments. Any commitment on the Budget vs. Actual Report that is missing from this list is a travel commitment.

**South Carolina Workers' Compensation Commission**  
**Earmarked Fund Revenues**  
**FY 2020 As of 4/30/2020**  
**83% of year elapsed**

Account	Acct No.	Budget	YTD Actual Revenue	% of Budget
WORKERS' COMP HEARING FEE	4110090000	1,091,322	889,013	81%
W COMP SELF INS APPL FEE	4160040000	26,577		
W COMP FILING VIOL PENALTY	4223030000	1,985,476	1,402,118	71%
PARKING FEE	4350040000	5,900	4,455	76%
W COMP AWARD REVIEW FEE	4350140000	32,251	15,000	47%
TRNG CONF REG FEE	4380020000	6,000	7,380	123%
PHOTOCOPYING FEE	4380050000	62,199	49,536	80%
SALE OF SERVICES	4480020000		26,775	
SALE OF LISTINGS & LABELS	4480060000	4,187	106,642	2,547%
REFUND PRIOR YR EXPENDITURE	4520010000		1,410	
RETURN CHECKS	4530010000			
ADJUSTMENT TO AGENCY DEPOSITS	4530020000			
MISC REVENUE	4530030000		1,645	
<b>Total Revenues</b>		<b>3,213,912</b>	<b>2,503,975</b>	<b>78%</b>

<b>Self Insurance Tax</b>		<b>2,500,000</b>	<b>4,512,180</b>	<b>180%</b>
---------------------------	--	------------------	------------------	-------------

<b>Total</b>		<b>5,713,912</b>	<b>7,016,155</b>	<b>123%</b>
--------------	--	------------------	------------------	-------------

4,187	106,642	102,455
-------	---------	---------