



SC Workers' Compensation Commission

Full Commission Business Meeting

May 16, 2022

A G E N D A

SOUTH CAROLINA WORKERS' COMPENSATION COMMISSION

1333 Main Street, 5th Floor
Columbia, South Carolina 29201
May 16, 2022- 10:30 a.m.

Meeting to be held in Hearing Room A

This meeting agenda was posted prior to the meeting and proper advance notice was made to all concerned parties in compliance with requirements in the Freedom of Information Act.

- | | |
|---|---|
| 1. CALL TO ORDER | CHAIRMAN BECK |
| 2. APPROVAL OF AGENDA OF BUSINESS MEETING OF MAY 16, 2022 | CHAIRMAN BECK |
| 3. APPROVAL OF MINUTES OF THE REGULAR BUSINESS MEETING OF APRIL 19, 2022, (Tab 1) | CHAIRMAN BECK |
| 4. APPROVAL OF MINUTES OF THE CALLED BUSINESS MEETING OF MAY 2, 2022, (Tab 2) | CHAIRMAN BECK |
| 4. GENERAL ANNOUNCEMENTS | MR. CANNON |
| 5. APPLICATIONS FOR APPROVAL TO SELF-INSURE (Tab 3) | MS. BROWN |
| 6. DEPARTMENT DIRECTORS' REPORTS
Human Resources (Tab 4)
Information Services (Tab 5)
Insurance and Medical Services (Tab 6)
Claims (Tab 7)
Judicial (Tab 8) | MS. WARD
MS. FALLS
MR. DUCOTE
MS. SPANN
MS. BRACY |
| 7. DEPARTMENT OF VOCATIONAL REHABILITATION
Monthly Report (Tab 9) | MR. CANNON |
| 8. EXECUTIVE DIRECTOR'S REPORT (Tab 10) | MR. CANNON |
| 9. FINANCIAL REPORT (Tab 11) | MR. CANNON |
| 10. OLD BUSINESS | CHAIRMAN BECK |
| 11. EXECUTIVE SESSION
General Counsel has requested an Executive Session to discuss pending litigation. | CHAIRMAN BECK |
| 12. ADJOURNMENT | CHAIRMAN BECK |

1	Approval of Minutes of Business Meeting of April 19, 2022
2	Approval of Minutes of Business Meeting of May 2, 2022
3	Self-Insurance
4	Human Resources
5	Information Services
6	Insurance and Medical Services
7	Claims
8	Judicial
9	Vocational Rehabilitation
10	Executive Director's Report
11	Financial Report

TAB 1

THE
SOUTH CAROLINA WORKERS'
COMPENSATION COMMISSION
BUSINESS MEETING MINUTES
April 19, 2022

A Business Meeting of the South Carolina Workers' Compensation Commission was held in Hearing Room A of the Workers' Compensation Commission on Monday, March 21st, 2022, at 10:30 a.m. The meeting agenda was posted prior to the meeting and proper advance notice was made to all concerned parties in compliance with requirements in the Freedom of Information Act. The following Commissioners were present:

T. SCOTT BECK, CHAIRMAN
SUSAN S. BARDEN, VICE CHAIR
R. MICHAEL CAMPBELL, II, COMMISSIONER
MELODY L. JAMES, COMMISSIONER
GENE MCCASKILL, COMMISSIONER
AISHA TAYLOR, COMMISSIONER

Present also were Gary Cannon, Executive Director; Keith Roberts, General Counsel, Christy Brown, Self-Insurance Director; Sandee Sprang, Director of Information Technology; Amy Bracy, Judicial Director; Wayne Ducote, Insurance & Medical Services Director; Sonji Spann, Claims Director; Kristen Mcree, Staff Attorney; Kim Falls, Business Analyst; Douglas Mann, IT Consultant; and Bonnie Anzelmo, Injured Workers' Advocates.

Chairman Beck called the meeting to order at 10:46 a.m.

AGENDA

Commissioner Barden moved that the agenda be approved. Commissioner McCaskill seconded the motion, and the motion was approved.

APPROVAL OF MINUTES – BUSINESS MEETING OF March 21, 2022

Commissioner Barden moved that the minutes of the Business Meeting of March 21, 2022, be approved. Commissioner Campbell seconded the motion, and the motion was approved.

GENERAL ANNOUNCEMENTS

There were no General Announcements.

APPLICATIONS FOR APPROVAL TO SELF-INSURE

Self-insurance applications were presented by Christy Brown, Self-Insurance Director. **Eight (8)** prospective members of **Three (3)** funds was presented to the Commission for approval. The applications were:

Palmetto Timber Fund
3G's Logging, LLC
Ronnie Poston Logging, Inc

South Carolina Home Builders SIF
Carolina Custom Trim

Icon Construction of the Low Country LLC
McGuire LLC
MJA Enterprise LLC
Parks Grading Company LLC

SC McDonalds Operators SIF
AITF, Inc DBA McDonald's Restaurants

After examination of the applications, it was determined that each complied with the Commission's requirements, and each was recommended for approval. Commissioner Taylor made the motion to approve the applications to self-insure, and Commissioner McCaskill seconded the motion. The motion was unanimously approved.

DEPARTMENT DIRECTORS' REPORTS

Each Department report was submitted in written form and included in the Commission's agenda booklets.

Human Resources

Ms. Ward submitted the Human Resources report. There were no comments or questions from the Commission.

Information Technology Department

Ms. Sprang submitted the IT report. There was some discussion regarding the RFP process. Ms. Sprang also introduced the new IT Consultant, Douglass Mann.

Insurance and Medical Services Department

Mr. Ducote submitted his report in written form. There was some discussion on the self-insurance tax trends. Commissioner McCaskill recognized Mr. Ducote for his assistance with an issue. There were no questions from the Commission.

Claims Department

Ms. Spann submitted her report in written form. There was some discussion on an increase in reported numbers.

Judicial Department

Ms. Bracy submitted her report in written form. There were no questions from the Commission.

VOCATIONAL REHABILITATION

Mr. Cannon submitted the report received from Vocational Rehabilitation. Mr. Cannon noted that Vocational Rehabilitation states that they have had issues getting in contact with Claimants. Mr. Cannon noted that he would follow up with the department for more information and clarification.

EXECUTIVE DIRECTOR'S REPORT

Mr. Cannon submitted his report in written form. Mr. Cannon noted that the budget is on the full Senate floor. Mr. Cannon also gave an update on the AV project.

ADMINISTRATION – FINANCIAL REPORT

Mr. Cannon submitted his report in written form. There were no questions from the Commission.

Chairman Beck noted that Commissioner Wilkerson was not at the business meeting this morning as he had an appointment.

OLD BUSINESS

There was no old business.

NEW BUSINESS

There was no new business.

EXECUTIVE SESSION

Commissioner Barden made a motion to move into Executive Session to discuss pending litigation matters. Commissioner McCaskill seconded the motion, and the motion was approved. The Commission went into Executive Session at 10:56 a.m.

Commissioner Barden made the motion to leave Executive Session at 11:15 a.m.; noting that no activity was taken. Commissioner McCaskill seconded the motion, and the motion was approved.

ADJOURNMENT

Commissioner Barden made the motion to adjourn. Commissioner James seconded the motion, and the motion was approved.

The April 19, 2022, meeting of the South Carolina Workers' Compensation Commission adjourned at 11:16 am.

Reported April 19, 2022
Kim Falls
Business Analyst, IT Dept.

TAB 2

THE
SOUTH CAROLINA WORKERS'
COMPENSATION COMMISSION
SPECIAL BUSINESS MEETING MINUTES

MAY 2, 2022

The SC Workers' Compensation Commission conducted a Special Called Business Meeting on Monday May 2, 2022 at 4:00 p.m. to discuss a pending litigation matter. The meeting was conducted electronically via Zoom with the Commissioners participating from different locations. The meeting agenda is contained within this Notice and is being posted in compliance of the Freedom of Information Act prior to the meeting. Individuals interested in participating in the meeting by Zoom are requested to contact Gary Cannon, Executive Director at GCannon@wcc.sc.gov. The following Commissioners were present:

T. SCOTT BECK, CHAIRMAN
SUSAN S. BARDEN, VICE CHAIR
R. MICHAEL CAMPBELL, II, COMMISSIONER
MELODY L. JAMES, COMMISSIONER
GENE MCCASKILL, COMMISSIONER
AISHA TAYLOR, COMMISSIONER

Also in attendance were Gary Cannon, Executive Director; Keith Roberts, General Counsel, and Kristen Mcree, Staff Attorney.

Chairman Beck called the meeting to order at 4:07 p.m.

AGENDA

Commissioner Taylor made the motion for Commission go into Executive Session. Commissioner Campbell seconded the motion, and the motion was approved.

Commissioner Barden made the motion to leave Executive Session at 5:05 p.m. stating no action was taken in the Executive Session, Commissioner Campbell seconded the motion, and the motion was approved.

ADJOURNMENT

Commissioner Barden made the motion to adjourn. Commissioner James seconded the motion, and the motion was approved.

The May 2, 2022, meeting of the South Carolina Workers' Compensation Commission adjourned at 5:08 p.m.

Reported May 2, 2022
Gary M Cannon
Executive Director

TAB 3

TAB 4

State of South Carolina

1333 Main Street, 5th Floor
P.O. Box 1715
Columbia, S.C. 29202-1715



TEL: (803) 737-5700
FAX: (803) 737-5764

Workers' Compensation Commission

TO: Gary Cannon

FROM: Bridget Ward

DATE: May 6, 2022,

SUBJECT: Monthly Human Resources Report for May 2022 Business Meeting

This report summarizes the activities of Human Resources during the period of April 1, 2022 through April 30, 2022.

At the end of April, the Commission had 48 full time employees, one part-time employee.

- **New Hires:** One
- **Separations or Retirements:** Two
- **FMLA Leaves:** One

In the month of April 3 SCEIS personnel transactions and 8 SCEIS time/leave transactions were processed. Detailed payroll and time reports were run as scheduled and any issues that arose were corrected with the collaborative effort of either the SCIES team or the Comptroller General Office.

Three "All Employee" emails were sent by HR during the month of April, and 1 travel report was processed. HR received and reviewed 835 emails and sent 230 emails.

There were one building issue and one parking issue in April and both were resolved in a timely manner. There was one update to the parking assignments.

There was no COVID cases in the month of April.

The interview process for both the IT Consultant and the Executive Assistant positions concluded in April. Our new IT Consultant started on April 18 and the new Executive Assistance will start the beginning of May. HR posted for a new IT Director and interviews will be conducted in May.

TAB 5

State of South Carolina

1333 Main St, Suite 500
P.O. Box 1715
Columbia, S.C. 29202-1715



Tel: (803) 737-5700
Fax: (803) 737-1258
www.wcc.sc.gov

Workers' Compensation Commission

To: Gary Cannon
SCWCC Executive Director
From: Kim Falls, Business Analyst
Date: May 4, 2022
Subject: IT Department May 2022 Full Commission Report

This report summarizes the activities and accomplishments for projects and initiatives in the IT department during April 2022.

I. Systems Operations, Maintenance and Support

EDI

The team kicked off their weekly meetings with ISO to move forward with the EDI Processing Contract. Kim is the lead contact for ISO and is distributing tasks to other team members as needed. Staff also worked with multiple EDI Trading Partners identify specific reasons for data rejections on Claims and POC submissions. We continue our participation in IAIABC conference calls for: Jurisdiction Only meetings, EDI Claims Committee and the POC 3.0 taskforces.

Progress

Duane and Liz provided standard support for invoice and check reconciliation issues to end users. Duane's testing of the new Progress upgrade hit another firewall issue regarding eCase/web browser access; he is working DTO to resolve the issue.

Systems Support

The IT team continues to collectively manage all end user support. Liz has assumed the primary responsibility of managing the helpdesk ticketing system and all related documentation. Douglas Mann joined the team in April and Liz is working hard to bring him up to speed.

Security

We had no security alerts in April.

Reporting

The IT team generated several Open Claims reports and Outstanding Carrier Fines for external stakeholders and provided Compliance reports for internal staff.

Staffing

Sandee Sprang's last day was Friday April 29th.

II. Projects, Enhancements and Development

Legacy Modernization

Several questions were sent in by vendors regarding the Claims Management solicitation. SFAA has scheduled another pre-bid conference for May 5th. Due to the additional meeting, the dates have been changed to the below:

- Issue: 3/4
- Conference: 3/22 at 1000
- Amendment Issued: 3/30
- Conference 2: 5/5 at 1400 questions at 1600
- Amendment #X NLT 5/12
- Proposals due: 5/20
- MMO Review: 5/20-6/3
- Charging: 6/9 (For 1.5 hours)
- Scoring: 6/22 all day
- Demonstrations: 8/1-8/2 all day
- Negotiations: 8/3-9/1
- Intent to Award: 9/7
- Award Effective: 9/16
- Contract Effective: 9/19

TAB 6

State of South Carolina



Workers' Compensation Commission

To: Mr. Gary Cannon
SCWCC Executive Director

From: Wayne Ducote, Jr.
IMS Director

Date: 11-May-22

Subj: Insurance and Medical Services Department
April 2022 Full Commission Report

Please find attached information provided to summarize the status and workflow of initiatives currently underway within the Insurance and Medical Services (IMS) Department.

In addition to the statistical data provided, please be advised of the following:

- | | |
|---------------------|--|
| Compliance Division | <ol style="list-style-type: none">1. Reviewing revenue metrics / projections.2. Working with staff to review workflow processes and additional training opportunities.3. Continuing to explore outreach opportunities with stakeholders. |
| Coverage Division | <ol style="list-style-type: none">1. Working with staff to review workflow processes and explore opportunities to enhance service provision.2. Lapse in Coverage: 25 new registrants; 0 notifications sent. |
| Medical Services | <ol style="list-style-type: none">1. Processing five medical bill reviewer certifications and renewals.2. Four medical bill pricing reviews were done in the month of April. |

While this summary is in no way all-inclusive, it may serve to assist you and our Commissioners in understanding the key initiatives underway in the IMS Department and provide measures by which the Department's effectiveness can be gauged. IMS welcomes any guidance that you and/or our Commissioners can provide concerning our performance and direction.

Employer Rule to Show Cause Hearings and Compliance Activity

The Compliance Division docketed 5 new RTSC cases and 7 total RTSC cases in the month of April. And, compelled 23 South Carolina employers to come into compliance with the Act. Year to date, 15 new RTSC cases and 31 total RTSC cases have been docketed.

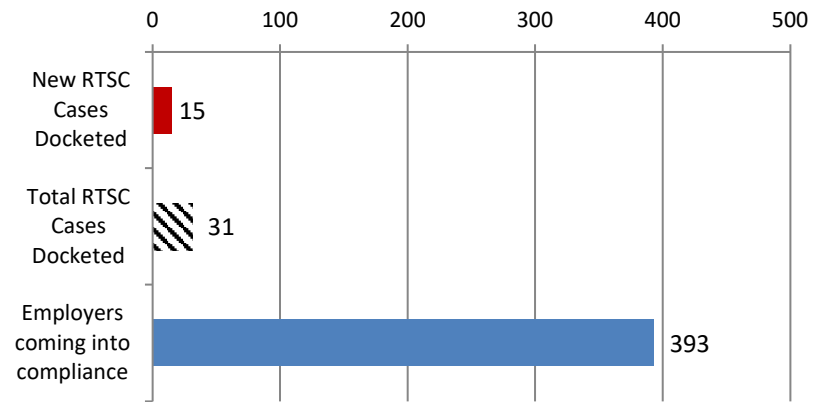
Employers Obtaining Coverage

Year to date, the Compliance Division has compelled 393 South Carolina employers to come into compliance with the Act. In so doing, approximately 3,272 previously uninsured workers are now properly covered.

Penalties Waived

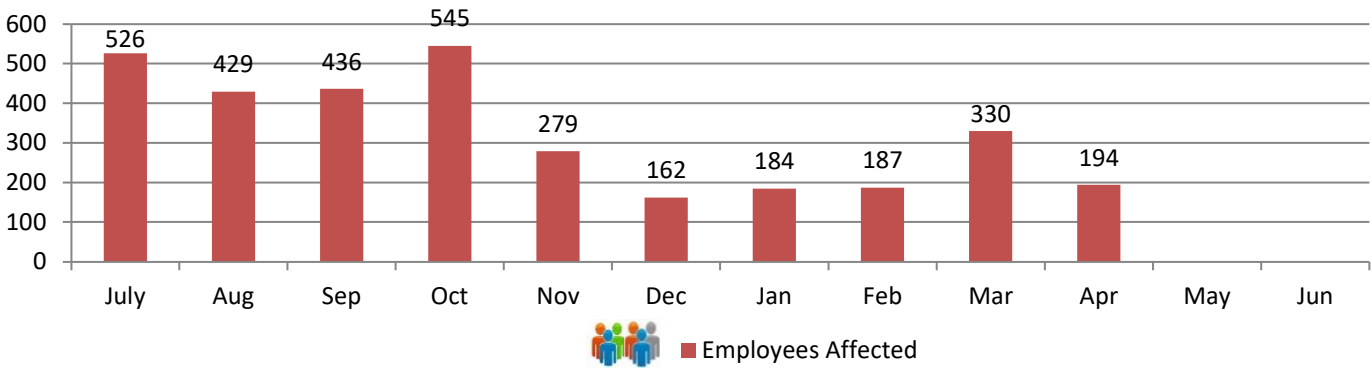
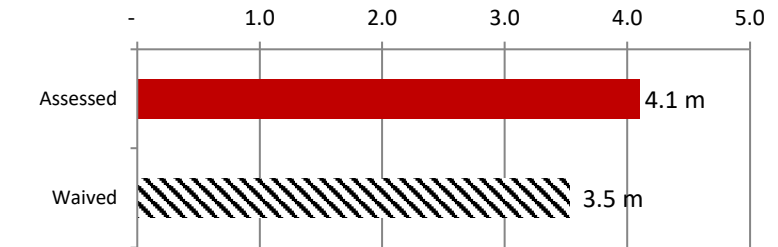
Although the Division has assessed \$4.1 m in fines this fiscal year, \$3.5 m have been waived or rescinded as employers have either obtained insurance coverage or were found not to be subject to the Act.

RTSC and Compliance Activity



Fines and Penalties

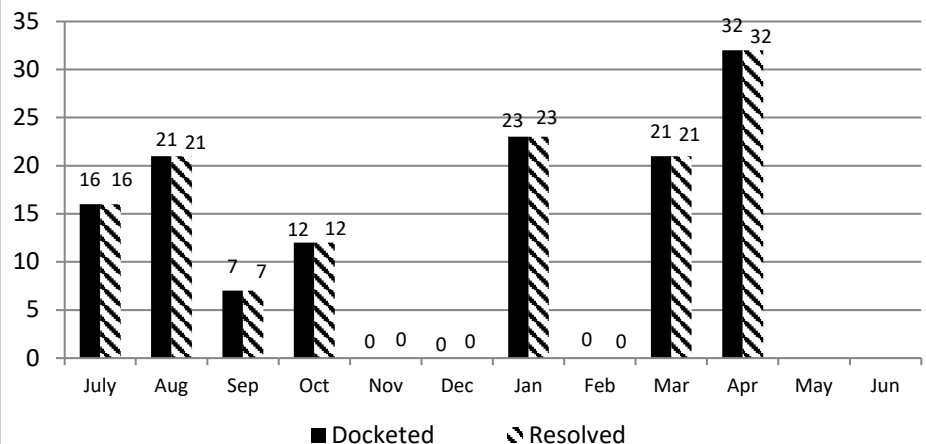
Millions



Carrier Rule to Show Cause Hearings

The Compliance Division manages the Rule to Show Cause process involving the recovery of outstanding carrier fines and penalties. In the month of April 2022, 32 carrier RTSC cases were docketed; 32 cases were resolved for a total of \$30,389.

Year to date, a total of 132 carrier RTSC cases have been docketed, 132 cases for a total of \$77,057 have been resolved.



Carryover Caseload:

The Compliance Division closed April 2022 with 383 cases active, compared to an active caseload of 278 at the close of April 2021.

Cases Resolved:

For the month of April 2022, Compliance Division staff closed-out 72 cases.

Compliance Fines:

In April 2022, the Compliance Division collected \$39,543 in fines and penalties. Year to Date, the Compliance Division has collected \$574,403 in fines and penalties.

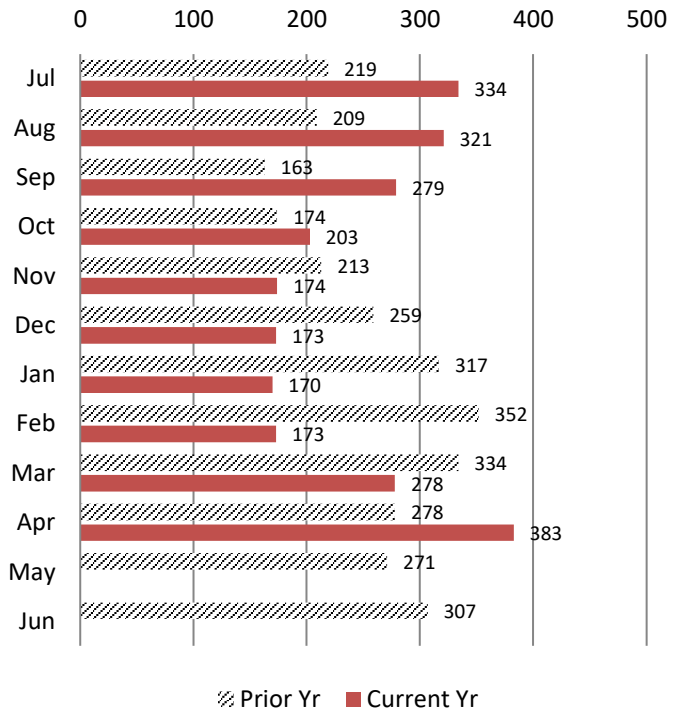
Year to Date vs Prior Year Total (\$785,893): 73%

Apr 2021 vs. Apr 2022: 46%

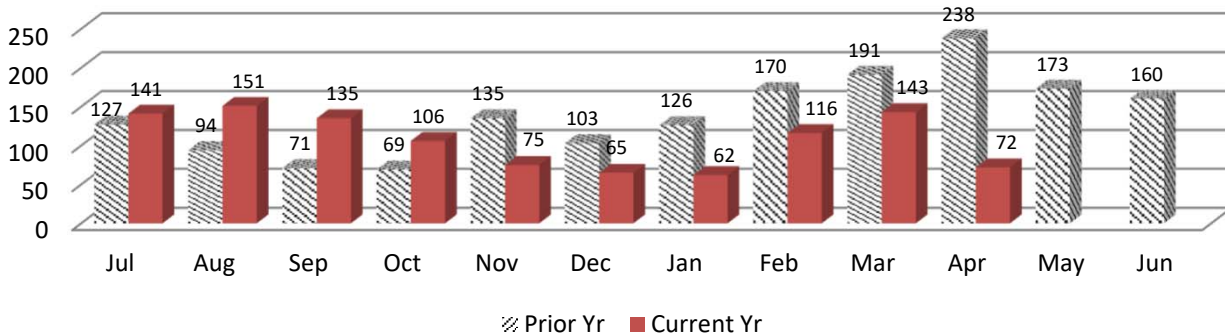
Current Year End trend is 88% of 2020-2021

YTD 2020-21 (Apr - June) vs YTD 2021-2022: 104%

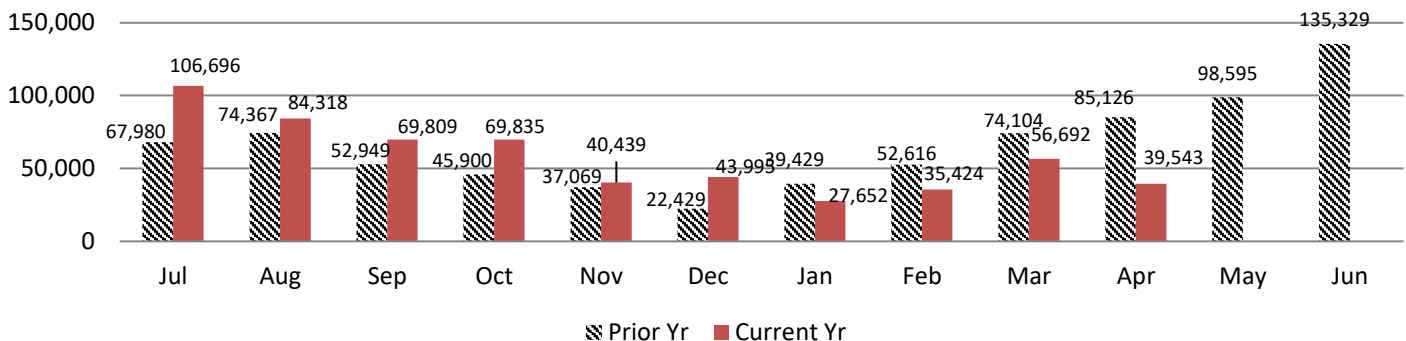
Caseload Pending v. Prior Year



Cases Resolved v. Prior Year



Compliance Fines Collected v. Prior Year



Employer Rule to Show Cause Hearings and Compliance Activity

The Compliance Division docketed 5 new RTSC cases and 7 total RTSC cases in the month of April. And, compelled 23 South Carolina employers to come into compliance with the Act. Year to date, 15 new RTSC cases and 31 total RTSC cases have been docketed.

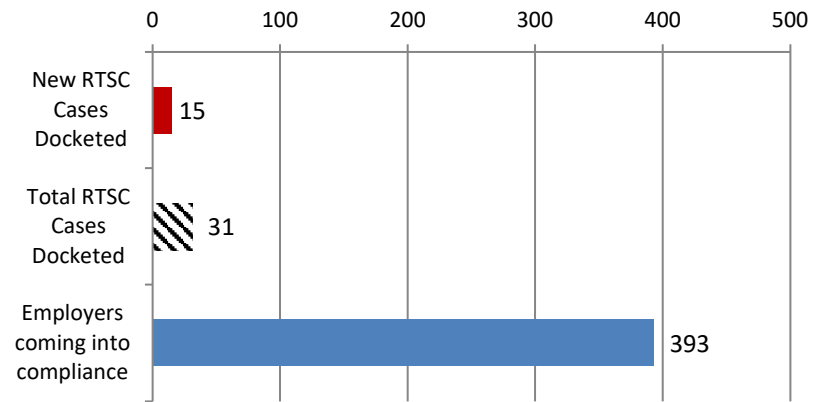
Employers Obtaining Coverage

Year to date, the Compliance Division has compelled 393 South Carolina employers to come into compliance with the Act. In so doing, approximately 3,272 previously uninsured workers are now properly covered.

Penalties Waived

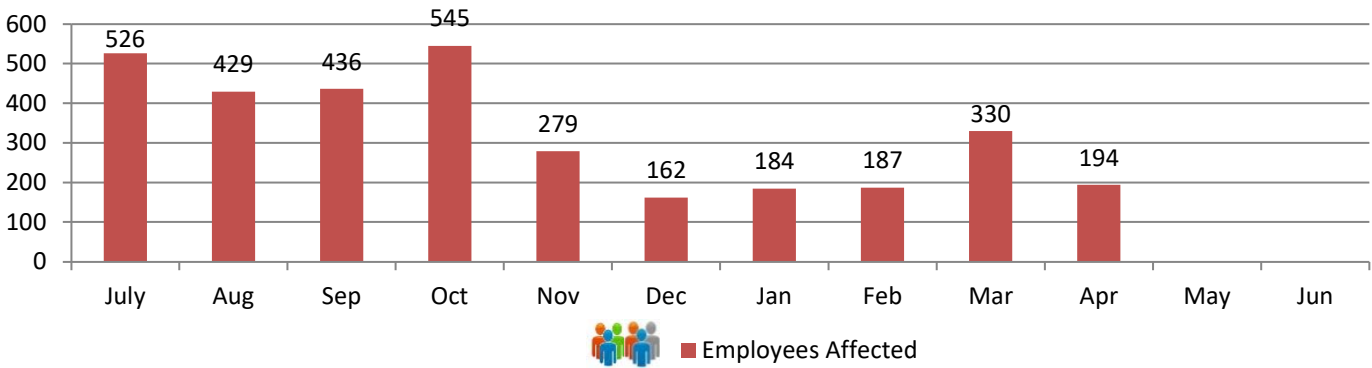
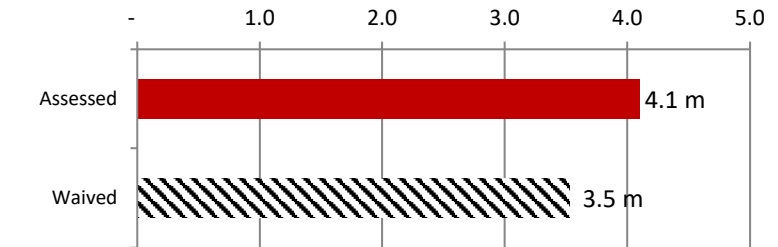
Although the Division has assessed \$4.1 m in fines this fiscal year, \$3.5 m have been waived or rescinded as employers have either obtained insurance coverage or were found not to be subject to the Act.

RTSC and Compliance Activity



Fines and Penalties

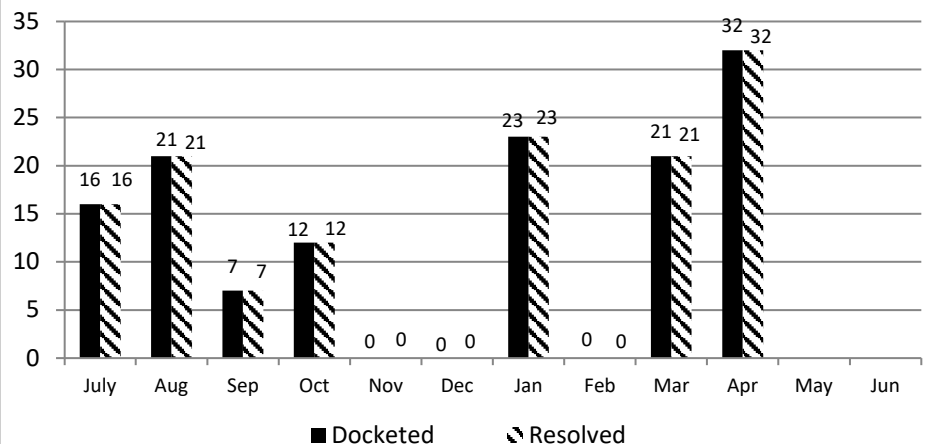
Millions



Carrier Rule to Show Cause Hearings

The Compliance Division manages the Rule to Show Cause process involving the recovery of outstanding carrier fines and penalties. In the month of April 2022, 32 carrier RTSC cases were docketed; 32 cases were resolved for a total of \$30,389.

Year to date, a total of 132 carrier RTSC cases have been docketed, 132 cases for a total of \$77,057 have been resolved.

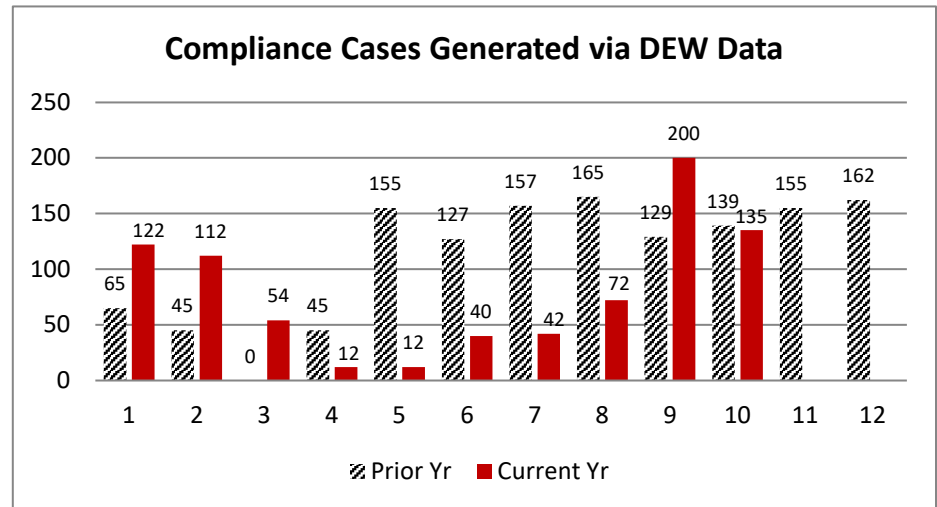
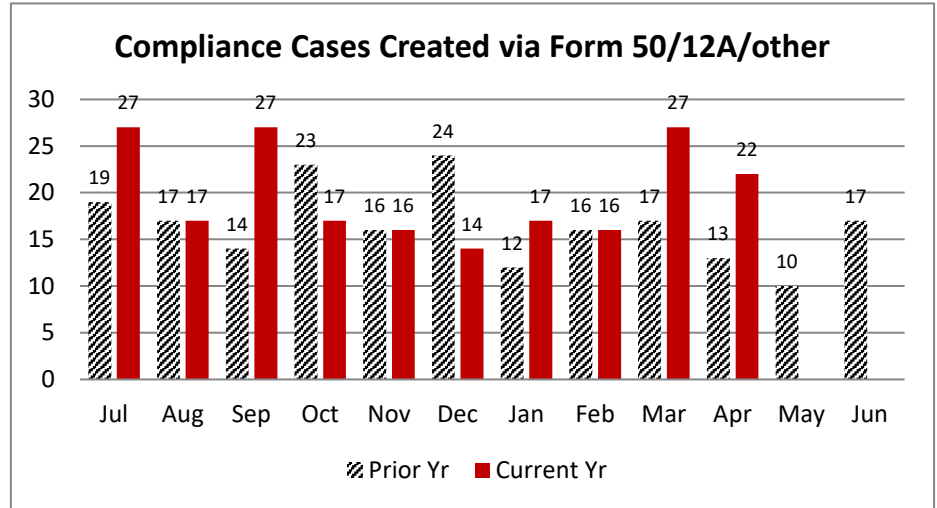


In April 2022, 22 compliance files were created from the combined filings of Form 50's, 12A's, and stakeholder reporting involving uninsured employers.

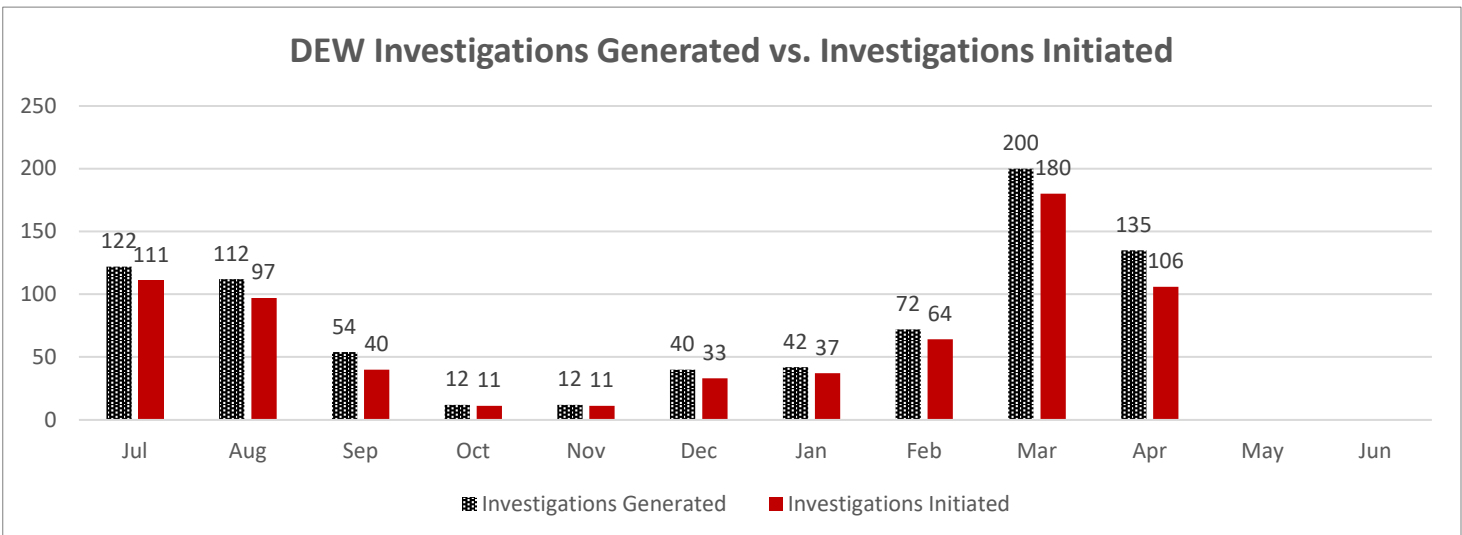
YTD vs. Prior Year total (198): 101%
 Apr 2021 to Apr 2022: 169%
 Current Yr End trend: 121% of 2020-2021
 YTD 2021-2022 v. YTD 2020-2021: 117%

In Apr 2022, 200 compliance files were generated from the DEW data process.

YTD vs. Prior Year total (1,344): 60%
 Apr 2021 to Apr 2022: 97%
 Current Yr End trend: 72% of 2019-2020
 YTD 2021-2022 v. YTD 2020-2021: 78%



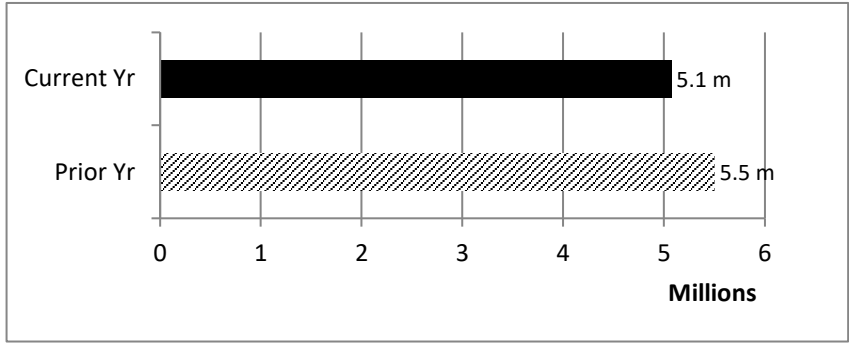
The DEW Data Pool is determined by the total number of potential, non-compliant employers who report wages to DEW with at least 4 employees and who's FEIN does not match with any coverage records in the Commission's coverage database. The investigations generated is the number of compliance investigations generated from the pool. The investigations initiated is the number of compliance investigations initiated from those that were generated.



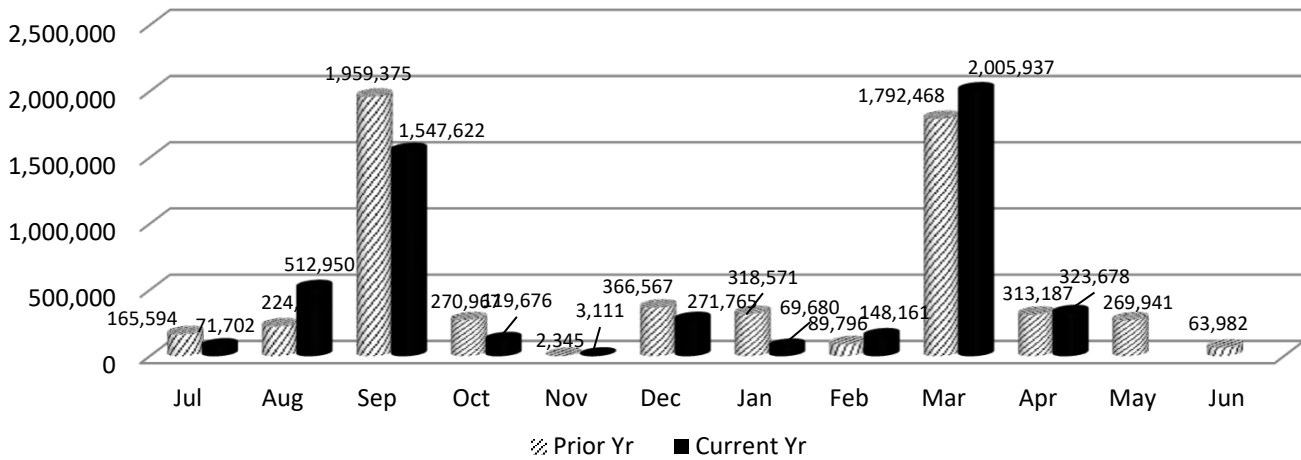
During the month of April 2022, the Self Insurance Division:

- * collected \$323,678 in self-insurance tax.
- * added 8 new self-insurers.
- * conducted 4 Self Insurance audits.

Year to Date, Self Insurance tax revenue is trending at 92% of prior year and 40 Self Insurance audits have been completed.



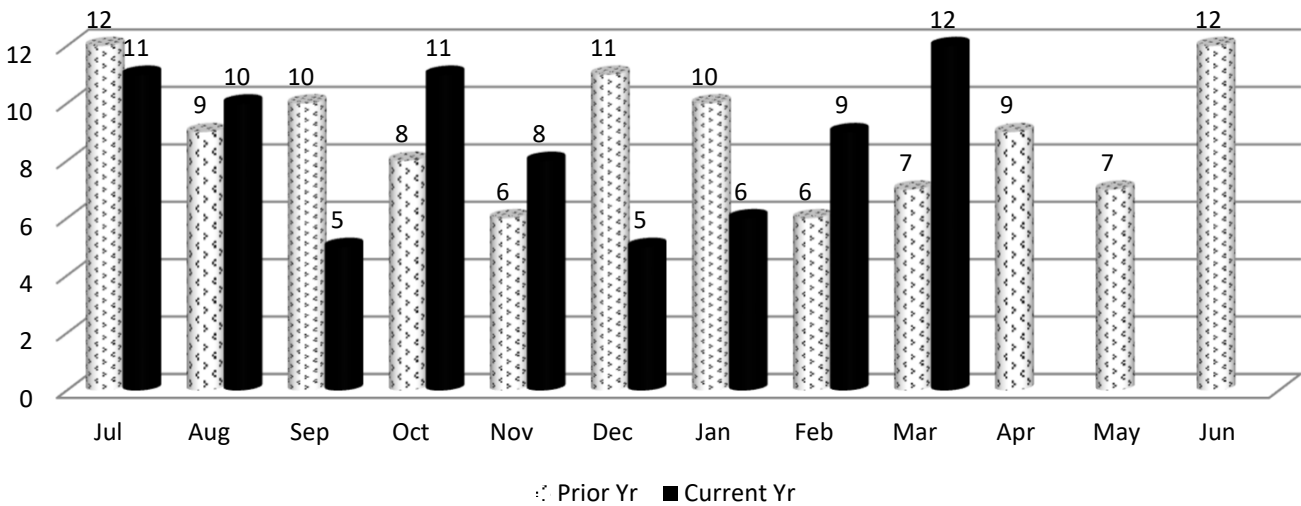
Self Insurance Tax Collections v. Prior Year



IMS MEDICAL SERVICES DIVISION

In April 2022, the Medical Services Division began the month with 12 bills pending review, received an additional 11 bills for review, conducted 13 bill reviews and ended the month with 10 bills pending.

Medical Bills Pending Review v. Prior Year



TAB 7

State of South Carolina

1333 Main Street, 5th Floor
P.O. Box 1715
Columbia, S.C. 29202-1715



TEL: (803) 737-5700
www.wcc.sc.gov

Workers' Compensation Commission **MEMORANDUM**

To: Gary Cannon, Executive Director

From: Sonji Spann, Claims Director

Date: May 16, 2022

Re: Claims Department May 2022 Full Commission Report

Attached is the Statistical Report for the Claims Department for the period July 1, 2021 through April 30, 2022 for the Business Meeting on May 16, 2022. Please note the format using row numbers and column letters for ease of use when referencing data.

Claims activities are in Column (a) with the totals for the seven-month period for FY21-22 in column (o). Column (q) reflects the percentage change when comparing the totals for same period in the current fiscal at the totals for the same period in last fiscal year. The total Claims Activities, for this period have increased 102% when compared to the same period from last fiscal year.

The number of Total Fines assessed are up 73% compared to the same period last fiscal year and the Total Fines paid is 111% higher when compared to the same period last year

I will be happy to answer any questions you or the Commissioners have.

Claims Department Statistical Report

FY2021-2022

July 1, 2021 - April 30, 2022

	July	August	Sept	Oct	Nov	Dec	Jan	Feb	March	April	FY21-22 Total	FY20-21 Total	% Chg same period FY20-21	
Col. > Row v	(a)	(b)	(c)	(d)	(e)	(f)	(g)	(h)	(i)	(j)	(k)	(o)	(p)	(q)
1	Forms 15-I	1,023	1,157	1,153	1,077	1,073	1,030	882	920	1,192	1,035	10,542	8,423	25%
2	Forms 15-II/Forms 17	933	1,028	922	970	897	856	367	803	1,038	918	8,732	7,179	22%
3	Forms 16 for PP/Disf	187	216	215	236	180	289	192	207	264	197	2,183	1,528	43%
4	Forms 18	4,325	4,511	4,491	4,073	4,310	4,121	4,306	4,701	4,901	4,371	44,110	31,706	39%
5	Forms 20	546	591	559	589	574	2,111	537	502	598	553	7,160	4,129	73%
6	Form 50 Claims Only	291	316	241	286	290	504	218	279	327	249	3,001	1,994	51%
7	Form 61	652	655	607	656	672	751	641	626	697	668	6,625	4,997	33%
8	Letters of Rep	251	258	219	201	204	169	186	216	229	160	2,093	1,615	30%
9	Clinchers	831	744	818	786	798	872	855	785	866	815	8,170	6,336	29%
10	Third Party Settlements	14	24	19	17	12	15	19	17	25	23	185	89	108%
11	SSA Requests for Info	64	49	35	42	42	29	30	26	37	43	397	273	45%
12	Cases Closed	2,028	2,233	2,275	2,136	2,049	2,111	2,103	2,027	2,553	2,179	21,694	17,613	23%
13	Cases Reviewed	2,849	3,742	2,694	2,261	2,228	2,435	2,909	2,953	3,407	3,406	28,884	23,267	24%
14	Total	13,994	15,524	14,248	13,330	13,329	13,433	13,245	14,072	16,134	14,617	141,926	70,425	102%
15												-	-	
16	Total Fines Assessed	297	338	221	184	119	310	543	328	370	334	3,044	1,760	73%
17	Form 18 Fines	331	321	211	184	118	310	530	316	365	314	3,000	1,650	82%
18	Total Amt Paid	\$38,650	\$60,800	\$59,450	\$33,400	\$23,800	\$34,400	\$47,400	\$35,200	\$52,400	\$86,500	472,000	223,900	111%

TAB 8

State of South Carolina

1333 Main Street
P.O. Box 1715
Columbia, S.C. 29202-1715



Tel: (803) 737-5700
Fax: (803) 737-1234
www.wcc.sc.gov

Workers' Compensation Commission

May 6, 2022

To: Gary Cannon
Executive Director

From: Amy A. Bracy
Judicial Director

RE: Monthly Judicial Report for April 2022

During the month of April, the Judicial Department processed eight hundred ten (810) requests for hearings (claimant and defense pleadings). Comparing the numbers from the same period last year, claimant pleadings remain consistent and defense pleadings are experiencing a 10% decrease. The department received one hundred thirteen (113) Motions, a 14% decrease compared to the same period last year and one hundred thirty-eight (138) clincher conference requests, down 9% compared to last year.

There were seventy-four (74) Single Commissioner Hearings conducted during the past month, nine (9) pre-hearing conferences held, and seven (7) Full Commission hearings held. A total of four hundred ninety-one (491) Orders (Single Commissioner Orders, Consent Orders and Administrative Orders) were served at the single Commissioner level, forty-two (42) of those were Decision and Orders that resulted from hearings that went on the record and one hundred forty-two (142) were Motion Orders that were a result of Motions ruled upon by Commissioners.

There were two hundred forty-five (245) Informal Conferences requested during April and one hundred ninety-two (192) were conducted.

There were forty-one (41) regulatory mediations scheduled and seventy-one (71) requested mediations. Totals are down 16% and 4% in the respective categories for the same period last year. The Judicial Department was notified of twenty-eight (28) matters resolved in mediation, with the receipt of Forms 70. This category's total is down 14% compared to the same period last year

In the month of April, Judicial received zero (0) Notice of Intent to Appeal to the Court of Appeals and zero (0) to the Circuit Court.

**Judicial Department Statistical Report
Statistics For Fiscal Year 2021-2022**

	July	Aug	Sept	Oct	Nov	Dec	Jan	Feb	March	April	Totals YTD 2021-2022	Totals YTD 2020-2021	% Diff from prev year	YTD Diff + (-)	FY21-22 Mth Avg	FY20-21 Mth Avg
Claimant Pleadings	484	560	496	512	502	469	486	574	578	548	5,209	5206	0%	3	521	521
Defense Response to Pleadings	409	406	466	376	407	441	376	410	517	463	4,271	4373	-2%	(102)	427	437
Defense Pleadings	287	285	310	266	229	257	270	268	300	262	2,734	3023	-10%	(289)	273	302
Motions	140	120	109	107	109	94	111	106	104	113	1,113	1289	-14%	(176)	111	129
Form 30	14	21	6	9	15	9	13	18	15	11	131	108	21%	23	13	11
FC Hearings Held	7	8	8	7	10	8	8	10	8	7	81	49	65%	32	8	5
FC Orders Served	14	14	11	8	9	5	12	9	8	14	104	76	37%	28	10	8
Single Comm. Hearings Held	40	61	52	67	55	45	53	61	49	74	557	692	-20%	(135)	56	69
Single Comm. Orders Served	215	189	204	154	141	180	189	167	186	203	1,828	2004	-9%	(176)	183	200
Single Comm. Pre-Hearing Conf Held	14	11	26	13	14	12	11	18	11	9	139	234	-41%	(95)	14	23
Consent Orders	211	218	256	229	239	207	303	237	272	281	2,453	2687	-9%	(234)	245	269
Adminstrative Orders	4	19	12	21	13	5	9	2	14	7	106	189	-44%	(83)	11	19
Clincher Conference Requested	109	149	154	145	136	140	112	137	131	138	1,351	1477	-9%	(126)	135	148
Informal Conference Requested	228	278	274	247	195	250	323	249	317	245	2,606	2740	-5%	(134)	261	274
Informal Conference Conducted	181	200	205	254	222	289	194	209	243	192	2,189	2052	7%	137	219	205
Regulatory Mediations	26	21	32	27	26	20	27	22	29	41	271	321	-16%	(50)	27	32
Requested Mediations	65	65	52	55	43	24	46	58	44	71	523	544	-4%	(21)	52	54
Ordered Mediations	0	0	0	0	0	0	0	1	1	0	2	5	-60%	(3)	0	1
Mediation Resolved	44	63	59	47	44	44	33	43	68	28	473	551	-14%	(78)	47	55
Mediation Impasse	22	19	11	14	8	14	12	19	21	7	147	161	-9%	(14)	15	16
Mediation Held; Issues Pending	0	2	2	0	5	0	0	0	1	0	10	7	0%	3	1	1
Claim Settled Prior to Mediation	7	14	14	9	10	13	9	14	9	1	100	96	4%	4	10	10
Mediation Not Complete in 60 days	4	1	2	1	3	2	2	10	0	1	26	15	73%	11	3	2

TAB 9

SC WCC Referrals
SFY 2020

COUNTY	July	Aug	Sep	Oct	Nov	Dec	Jan	Feb	Mar	Apr	May	June	County Total	% of State Total
Abbeville	0	0	0	1	1	1	0	1	2	2	0	0	8	0.38%
Aiken	7	7	10	7	7	2	8	3	8	9	0	0	68	3.24%
Allendale	1	2	0	0	0	0	0	0	2	0	0	0	5	0.24%
Anderson	13	10	10	10	10	12	13	15	9	6	0	0	108	5.15%
Bamberg	2	1	1	1	1	1	2	0	1	0	0	0	10	0.48%
Barnwell	0	3	0	2	2	1	2	0	1	1	0	0	12	0.57%
Beaufort	10	9	7	8	11	8	9	10	8	6	0	0	86	4.10%
Berkeley	5	5	7	5	5	10	8	6	7	11	0	0	69	3.29%
Calhoun	0	1	2	0	1	0	1	2	0	0	0	0	7	0.33%
Charleston	11	13	15	13	15	15	15	15	15	15	0	0	142	6.77%
Cherokee	3	1	2	1	5	5	4	1	3	4	0	0	29	1.38%
Chester	0	2	1	0	3	3	2	2	0	4	0	0	17	0.81%
Chesterfield	1	1	1	1	2	1	0	1	1	2	0	0	11	0.52%
Clarendon	3	1	1	1	0	1	3	1	2	0	0	0	13	0.62%
Colleton	1	3	0	4	3	3	3	0	1	2	0	0	20	0.95%
Darlington	2	8	2	1	5	5	4	4	2	1	0	0	34	1.62%
Dillon	3	1	2	0	0	0	0	0	0	2	0	0	8	0.38%
Dorchester	5	5	8	5	7	5	4	5	8	4	0	0	56	2.67%
Edgefield	0	0	0	1	1	5	0	0	1	0	0	0	8	0.38%
Fairfield	3	2	2	3	2	0	1	1	1	1	0	0	16	0.76%
Florence	7	9	12	7	7	7	3	8	5	8	0	0	73	3.48%
Georgetown	2	1	1	1	4	5	4	3	2	3	0	0	26	1.24%
Greenville	15	15	15	13	15	15	15	15	15	15	0	0	148	7.05%
Greenwood	6	2	7	6	3	3	2	2	4	4	0	0	39	1.86%
Hampton	0	5	0	1	2	2	1	0	0	2	0	0	13	0.62%
Horry	8	9	14	9	11	10	8	12	13	12	0	0	106	5.05%
Jasper	1	1	3	2	0	2	1	1	1	4	0	0	16	0.76%
Kershaw	5	3	7	4	1	5	3	2	0	4	0	0	34	1.62%
Lancaster	1	2	3	3	3	5	3	4	3	5	0	0	32	1.53%
Laurens	2	1	3	5	7	6	2	2	6	3	0	0	37	1.76%
Lee	1	0	0	2	0	1	0	0	0	0	0	0	4	0.19%
Lexington	15	17	15	13	15	15	16	15	15	15	0	0	151	7.20%
Marion	0	2	1	0	1	5	3	1	2	1	0	0	16	0.76%
Marlboro	3	1	1	1	1	0	0	1	1	0	0	0	9	0.43%
McCormick	0	1	1	0	0	1	0	1	0	0	0	0	4	0.19%
Newberry	2	1	4	5	1	2	3	5	2	5	0	0	30	1.43%
Oconee	2	3	2	5	9	6	9	8	0	5	0	0	49	2.34%
Orangeburg	5	8	7	9	4	8	4	8	4	6	0	0	63	3.00%
Pickens	8	9	4	6	5	2	1	4	4	3	0	0	46	2.19%
Richland	12	10	15	15	16	15	15	15	15	15	0	0	143	6.82%
Saluda	1	2	2	1	0	2	1	0	2	1	0	0	12	0.57%
Spartanburg	13	15	10	15	15	15	14	15	15	15	0	0	142	6.77%
Sumter	11	4	9	7	4	5	6	7	3	3	0	0	59	2.81%
Union	0	0	4	3	2	0	1	0	2	1	0	0	13	0.62%
Williamsburg	1	6	3	2	5	1	5	1	4	2	0	0	30	1.43%
York	9	6	6	7	9	7	5	9	12	6	0	0	76	3.62%
Monthly Totals	200	208	220	206	221	223	204	206	202	208	0	0	2098	100.00%

SFY 2022 Pie Chart
through 5/09/2022



Outcome Date Range

7/1/2021

5/9/2022

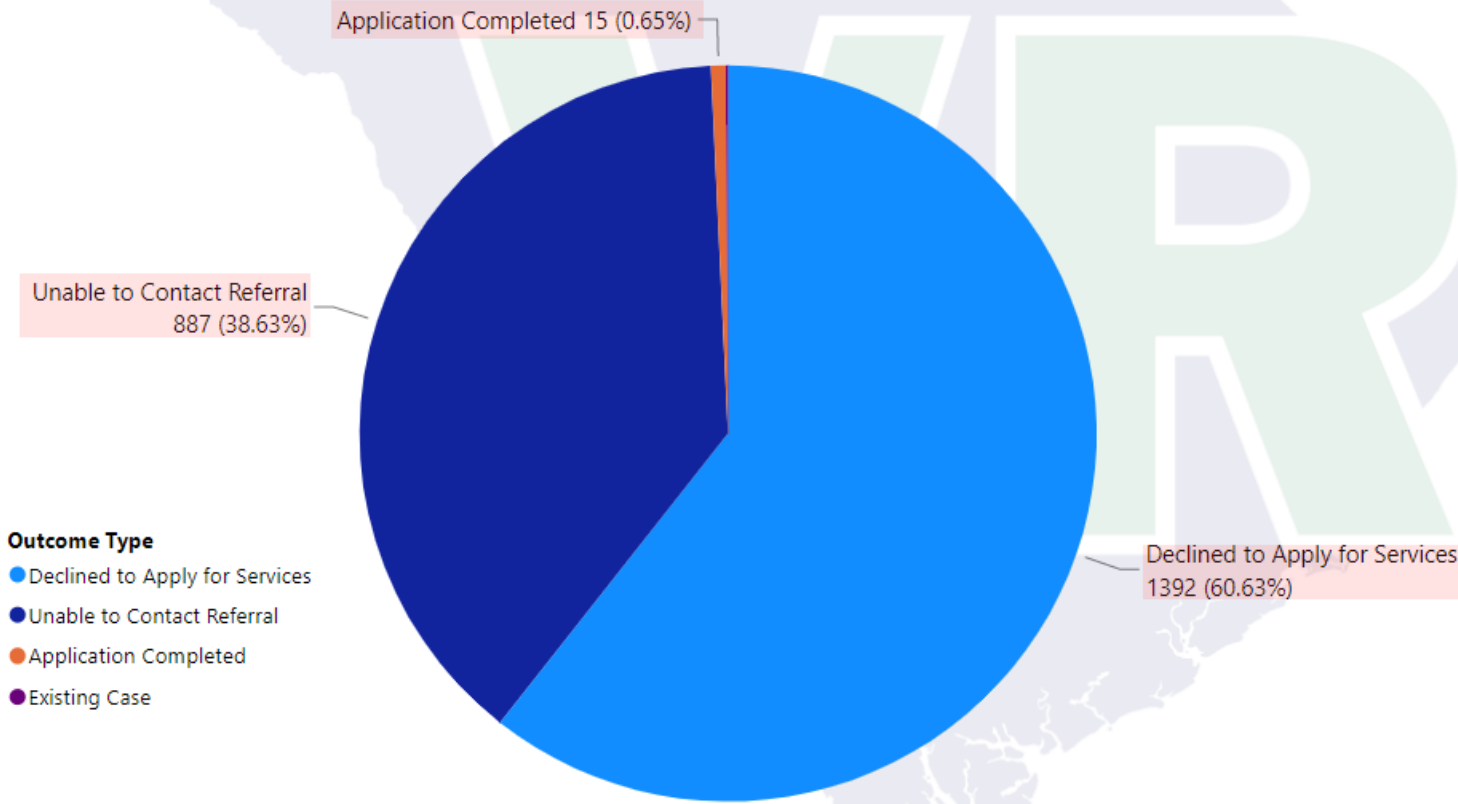
Area Office

All

Referring Organization

SC Workers Compensation

Outcome Count by Outcome Type



SFY 2022 Bar Graph
through 5/09/2022



Outcome Date Range

7/1/2021 5/9/2022

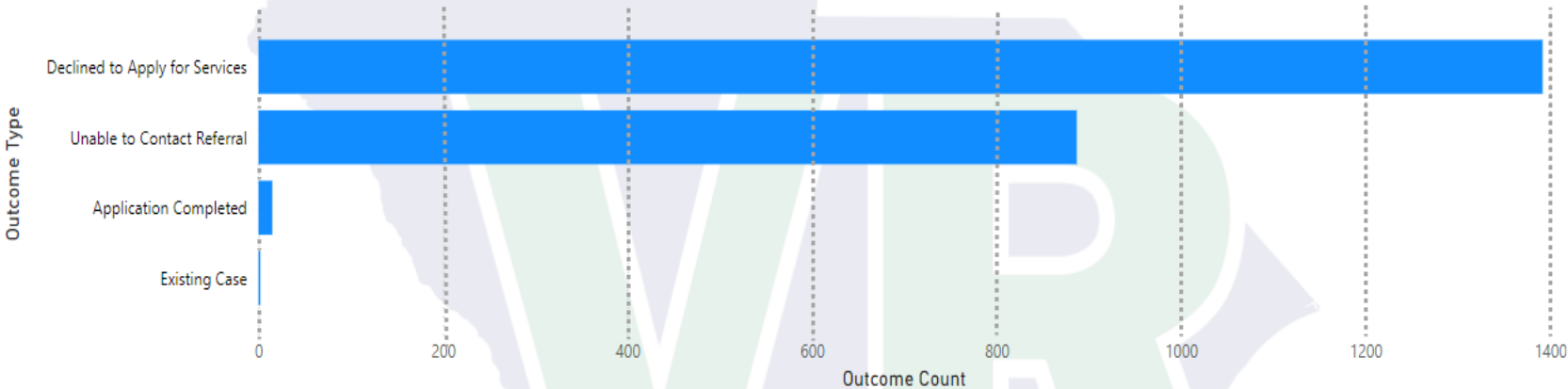
Area Office

All

Referring Organization

SC Workers Compensation

Outcome Count by Outcome Type



Outcome Type	Outcome Count
Declined to Apply for Services	1392
Unable to Contact Referral	887
Application Completed	15
Existing Case	2
Total	2296

TAB 10

State of South Carolina



Workers' Compensation Commission

Executive Director's Report May 16, 2022

Hearing Rooms – Audio Visual Equipment

The new AV equipment has been installed in Hearing Rooms in A and B. We are waiting a part to be delivered to make the system fully functional. Delivery date is pending due to supply chain issues.

Meetings/Activities

Constituent /Public Information Services

For the month of March the Executive Director's Office and the General Counsel's office had 229 contacts with stakeholders.

Financial Transactions Activity

During the month of April the Director's office processed and approved 41 travel expense reports, 77 invoices, and 68 deposits for DOA to process in the SCIES system.

SCWCC Stakeholder Electronic Distribution List

For the month of April, we added one individual. A total of 686 individuals currently receives notifications from the Commission. Staff will be reviewing the distribution to delete the inactive email addresses.

Advisory Notices

During the month of February, the office posted three (3) notices on the Commission's website and emailed it to the distribution list.

TAB 11

State of South Carolina

1333 Main Street, 5th Floor
P.O. Box 1715
Columbia, S.C. 29202-1715



TEL: (803) 737-5700
www.wcc.sc.gov

Workers' Compensation Commission

MEMORANDUM

TO: COMMISSIONERS

**FROM: Gary Cannon
Executive Director**

DATE: May 16, 2022

RE: FINANCIAL REPORT – FY Period ending April 30, 2022

Attached is the Budget vs. Actual Report for the General Fund and Earmarked Fund for the fiscal year period ending April 30, 2022. The benchmark for this period is 83%.

Expenditures

The expenditures for the General Fund are on pages 1-2 of the attached report "Budget vs. Actual Report FY2022. The year-to-day expenditures in the General Fund (10010000) for this period is \$2,227,097. To provide a more accurate account of the monthly operational expenditures the total operational budgeted is decreased by \$1,695,084, the amount in the IT Management Project account. The adjusted the operational Budget to \$2,906,088. The year-to-date operational expenditures is \$2,227,097 or 77% of the adjusted budgeted amount 6% below benchmark.

The Earmarked Fund (38440000) financials begin on page 4 with the total expenditures found on page 10. The total expenditures for this period are \$3,178,735 or 58% of budgeted amount.

Revenues

The Earmarked Fund budgeted \$3,170,991 for operating revenues. Year to date the Fund received \$ 2,188,364 or 69% of budgeted revenues.

Self-Insurance Tax Funds

To date we have received \$ 4,827,174 of Self-Insurance Tax funds.

South Carolina Workers' Compensation Commission
Budget vs. Actual Report
FY 2022 As of 4/30/2022
83% of year elapsed

Fund 10010000 - GENERAL FUND

Administration

Commitment Item	Commitment Item Description	Current Budget	YTD Expenditures	% Used	Commitments	Remaining Balance
501015	DIRECTOR	142,153	124,384	87%		17,769
501058	CLASSIFIED POS	49,235				49,235
512001	OTHER OPERATING	323,033				
Total OTHER OPERATING:		323,033				323,033
Total Administration:		514,421	124,384	24%		390,037

Inform. services

Commitment Item	Commitment Item Description	Current Budget	YTD Expenditures	% Used	Commitments	Remaining Balance
5030067130	EQUIP&SUPP- EUC		22,828			
Total OTHER OPERATING:			22,828		0	-22,828
Total Inform. services:			22,828		0	-22,828

Claims

Commitment Item	Commitment Item Description	Current Budget	YTD Expenditures	% Used	Commitments	Remaining Balance
501058	CLASSIFIED POS	82,579	72,257	87%		10,322
Total Claims:		82,579	72,257	87%	0	10,322

Commissioners

Commitment Item	Commitment Item Description	Current Budget	YTD Expenditures	% Used	Commitments	Remaining Balance
501026	CHAIRMAN	172,258	150,726	87%		21,532
501033	COMMISSIONER	1,003,438	878,005	87%		125,433
501050	TAXABLE SUBS	70,000	49,071	70%		20,929
501058	CLASSIFIED POS	353,625	309,434	88%		44,191
501070	OTH PERS SVC		22,833			-22,833
Total Commissioners:		1,599,321	1,410,068	88%	0	189,253

South Carolina Workers' Compensation Commission
Budget vs. Actual Report
FY 2022 As of 4/30/2022
83% of year elapsed

Fund 10010000 - GENERAL FUND

Information Services FY18

Commitment Item	Commitment Item Description	Current Budget	YTD Expenditures	% Used	Commitments	Remaining Balance
561000	Special Item	1,695,084	0	0	0	1,695,084
Total Information Services FY18:		1,695,084	0	0	0	1,695,084

Insurance & Medical

Commitment Item	Commitment Item Description	Current Budget	YTD Expenditures	% Used	Commitments	Remaining Balance
501058	CLASSIFIED POS	31,365	27,444	87%		3,921
Total Insurance & Medical:		31,365	27,444	87%		3,921

Judicial

Commitment Item	Commitment Item Description	Current Budget	YTD Expenditures	% Used	Commitments	Remaining Balance
501058	CLASSIFIED POS	746				746
512001	OTHER OPERATING	29,852				
Total OTHER OPERATING:		29,852				29,852
Total Judicial:		30,598				30,598

Employer Contributions

Commitment Item	Commitment Item Description	Current Budget	YTD Expenditures	% Used	Commitments	Remaining Balance
513000	EMPLOYER CONTRIB	647,804	570,117	88%		77,687
Total Employer Contributions:		647,804	570,117	88%		77,687

Total GENERAL FUND:		4,601,172	2,227,097	48%	0	2,374,075
----------------------------	--	------------------	------------------	------------	----------	------------------

South Carolina Workers' Compensation Commission
Budget vs. Actual Report
FY 2022 As of 4/30/2022
83% of year elapsed

Fund 31C30000 - COVID-19 RESP RESERV

Inform. services

Commitment Item	Commitment Item Description	Current Budget	YTD Expenditures	% Used	Commitments	Remaining Balance
512001	OTHER OPERATING	100,000				
5030067130	EQUIP&SUPP- EUC		11,273			
	Total OTHER OPERATING:	100,000	11,273	11%	0	88,727
	Total Inform. services:	100,000	11,273	11%	0	88,727
	Total COVID-19 RESP RESERV:	100,000	11,273	11%	0	88,727

South Carolina Workers' Compensation Commission
Budget vs. Actual Report
FY 2022 As of 4/30/2022
83% of year elapsed

Fund 38440000 - EARMARKED FUND

Administration

Commitment Item	Commitment Item Description	Current Budget	YTD Expenditures	% Used	Commitments	Remaining Balance
501058	CLASSIFIED POS	791,985	174,796	22%		617,189
501070	OTH PERS SVC	41,000	3,188	8%		37,812
512001	OTHER OPERATING	2,282,671				
5020030000	PRINT / BIND / ADV		106			
5020120000	CELLULAR PHONE SVCS		1,863			
5021010003	LEGAL SRV-TRANSCRIPT		414			
5021020000	ATTORNEY FEES		26,458			
5021410000	EDUC & TRNG-STATE		75			
5021450000	MOTOR VEHICLE SVCS		72			
5021479207	JANITORIAL		62			
5021490000	AUDIT ACCT FINANCE		130			
5021530000	CATERED MEALS		323			
5021540000	NON-IT OTHER PRO SRV		5,400			
5021540001	PROF SRV-LANG INTER		68		32	
5024990000	OTH CNT-NON-IT & REA		842			
5030010000	OFFICE SUPPLIES		4,358			
5030010002	OFF SUP - MIN OFF EQ		9			
5030010004	SUBSCRIPTIONS		9,227			
5030030000	PRINTED ITEMS		3,988			
5030050000	PHOTO & VISUAL SUPP		134			
5030067101	PRGM LIC - APP SUPP		35,273		5,878	
5030067110	EQUIP&SUPP- DATA NET		111			
5030067130	EQUIP&SUPP- EUC		102,800			
5030067170	EQUIP&SUPP- PRINT EU		6,147			
5030070000	POSTAGE		21,973			
5031010003	KITCHEN UTENSILS		243			
5031479203	JANITORIAL SUPPLIES		117			
5031639500	OTH SECURTY EXP SUPL		6			
5032410000	MED/SCIENT/LAB SUPP		151			
5032820000	INSTRUCTIONAL MAT		748			
5033090000	EMPLOYEE RECOG AWARD		3,082			
5040060000	ST RENT-NON ST BLDG		314,813		1,291	

South Carolina Workers' Compensation Commission
Budget vs. Actual Report
FY 2022 As of 4/30/2022
83% of year elapsed

Fund 38440000 - EARMARKED FUND

5040070000	RENT-ST OWN RL PROP		120			
5040490002	RENT-OTH-ROOM&VID		400			
5040490003	RENT PO BOX		1,544			
5040490009	RENT PARKING		13,041		2,885	
5040510000	INSURANCE-STATE		5,225			
5041010000	DUES & MEMBER FEES		6,384			
5041020000	FEES AND FINES		25			
5041020001	FF - BACKGRD CK		26			
5041840000	LEASE BLDG PRINCIPAL		0		72,629	
5041850000	LEASE BLDG INTEREST		0		2,003	
5050010000	IN ST-MEALS-NON-REP		1,290			
5050020000	IN ST-LODGING		4,512			
5050041000	HR-IN ST-AUTO MILES		2,709			
5050060000	IN ST-MISC TR EXP		153			
5050070000	IN ST-REGISTR FEES		1,329			
5050510000	OUT ST-MEALS-NON-REP		170			
5050570000	OUT ST-REGISTR FEES		930			
5051520000	REPORTABLE MEALS		17			
5051540000	LEASED CAR-ST OWNED		32,298			
Total OTHER OPERATING:		2,282,671	609,167	27%	84,718	1,588,786
Total Administration:		3,115,656	787,152	25%	84,718	2,243,786

Executive director

Commitment Item	Commitment Item Description	Current Budget	YTD Expenditures	% Used	Commitments	Remaining Balance
Total Executive director:						0
						0

Inform. services

Commitment Item	Commitment Item Description	Current Budget	YTD Expenditures	% Used	Commitments	Remaining Balance
501058	CLASSIFIED POS		309,034			-309,034
501070	OTH PERS SVC		3,000			-3,000
5020010001	OFF EQ SRV-NON-IT PL				1,296	
5020077100	SERVICES- APP SUP		17,695		73,823	
5020077110	SERVICES- DATA NET		125			

South Carolina Workers' Compensation Commission
Budget vs. Actual Report
FY 2022 As of 4/30/2022
83% of year elapsed

Fund 38440000 - EARMARKED FUND

5020077170	SERVICES- PRINT EU		1,130			
5020077200	SERVICES- SERVERS		5,915			
5020077220	SERVICES- VOICENET		14,952		8,640	
5020077240	DP SERVICES – STATE		196,093			
5021330003	CONTR-STATE		39,000			
5021469316	SECURITY ALARM SRVC		2,838			
5024990000	OTH CNT-NON-IT & REA				4,822	
5030010000	OFFICE SUPPLIES		3,230			
5030010003	OFF SUP&EQ-NON-IT PL				8,666	
5030010004	SUBSCRIPTIONS		395			
5030067101	PRGM LIC - APP SUPP		18,021			
5030067110	EQUIP&SUPP- DATA NET		1,271			
5030067130	EQUIP&SUPP- EUC		4,222		4,650	
5030067131	PLM- EUC		1,175			
5030067141	PLM- ITSD		9,590			
5030067170	EQUIP&SUPP- PRINT EU		4,760		2,440	
5030067211	PLM- STORAGE		50			
5030090000	COMMUNICATION SUPP		1,300			
5031010000	LAUNDRY SUPPLIES		53			
5040057000	CONTINGNT RENT - IT		3,598		-	
5041010000	DUES & MEMBER FEES		100			
5050010000	IN ST-MEALS-NON-REP		285			
5050020000	IN ST-LODGING		1,323			
5050041000	HR-IN ST-AUTO MILES		554			
5050050000	IN ST-OTHER TRANS		554			
5050070000	IN ST-REGISTR FEES		1,874			
5050510000	OUT ST-MEALS-NON-REP		100			
5050520000	OUT ST-LODGING		1,032			
5050531000	HR-OUT ST-AIR TRANS		498			
5050550000	OUT ST-OTHER TRANS		260			
5050560000	OUT ST-MISC TR EXPEN		120			
Total OTHER OPERATING:			332,113		104,337	-436,450
Total Inform. services:			644,147		104,337	-748,485

South Carolina Workers' Compensation Commission
Budget vs. Actual Report
FY 2022 As of 4/30/2022
83% of year elapsed

Fund 38440000 - EARMARKED FUND

Claims

Commitment Item	Commitment Item Description	Current Budget	YTD Expenditures	% Used	Commitments	Remaining Balance
501058	CLASSIFIED POS	280,850	194,110	69%		86,740
501070	OTH PERS SVC		4,000			-4,000
512001	OTHER OPERATING	19,700				
5030010000	OFFICE SUPPLIES		22			
5040510000	INSURANCE-STATE		2,613			
5050020000	IN ST-LODGING		164			
Total OTHER OPERATING:		19,700	2,798	14%	0	16,902
Total Claims:		300,550	200,908	67%	0	99,642

South Carolina Workers' Compensation Commission
Budget vs. Actual Report
FY 2022 As of 4/30/2022
83% of year elapsed

Fund 38440000 - EARMARKED FUND

Commissioners

Commitment Item	Commitment Item Description	Current Budget	YTD Expenditures	% Used	Commitments	Remaining Balance
501033	COMMISSIONER		-254			254
501050	TAXABLE SUBS	70,000				70,000
512001	OTHER OPERATING	230,700				
5020077112	NCV- DATA NET		1,026			
5020080000	FREIGHT EXPRESS DELV		228			
5020120000	CELLULAR PHONE SVCS		17,588			
5021010003	LEGAL SRV-TRANSCRIPT		2,281			
5021010005	LEGAL SRV-REPORTER		56,006			
5021410000	EDUC & TRNG-STATE		150			
5021540000	NON-IT OTHER PRO SRV		345			
5021540001	PROF SRV-LANG INTER		150			
5030010000	OFFICE SUPPLIES		120			
5030090000	COMMUNICATION SUPP		1,050			
5040510000	INSURANCE-STATE		15,385			
5050010000	IN ST-MEALS-NON-REP		1,106			
5050020000	IN ST-LODGING		3,711			
5050031000	HR-IN ST-AIR TRANS		82			
5050040000	IN ST-AUTO MILEAGE		206			
5050041000	HR-IN ST-AUTO MILES		14,267			
5050060000	IN ST-MISC TR EXP		265			
5050080000	IN ST-SUBSIST ALLOW		4,021			
5050510000	OUT ST-MEALS-NON-REP		85			
5050570000	OUT ST-REGISTR FEES		565			
Total OTHER OPERATING:		230,700	118,638	51%	0	112,062
Total Commissioners:		300,700	118,383	39%	0	182,317

South Carolina Workers' Compensation Commission
Budget vs. Actual Report
FY 2022 As of 4/30/2022
83% of year elapsed

Fund 38440000 - EARMARKED FUND

Insurance & Medical

Commitment Item	Commitment Item Description	Current Budget	YTD Expenditures	% Used	Commitments	Remaining Balance
501058	CLASSIFIED POS	435,902	326,225	75%		109,677
501070	OTH PERS SVC	31,200	14,210	46%		16,990
512001	OTHER OPERATING	54,500				
5020080000	FREIGHT EXPRESS DELV		38			
5021540000	NON-IT OTHER PRO SRV		18,580			
5024990000	OTH CNT-NON-IT & REA		940			
5030010000	OFFICE SUPPLIES		321			
5030010004	SUBSCRIPTIONS		782			
5030030000	PRINTED ITEMS		421			
5030070000	POSTAGE		15			
5040510000	INSURANCE-STATE		3,193			
5050010000	IN ST-MEALS-NON-REP		224			
5050020000	IN ST-LODGING		2,347			
5050031000	HR-IN ST-AIR TRANS		288			
5050041000	HR-IN ST-AUTO MILES		878			
5050050000	IN ST-OTHER TRANS		87			
5050060000	IN ST-MISC TR EXP		102			
5050070000	IN ST-REGISTR FEES		350			
5050510000	OUT ST-MEALS-NON-REP		85			
5050570000	OUT ST-REGISTR FEES		415			
Total OTHER OPERATING:		54,500	29,066	53%	0	25,434
Total Insurance & Medical:		521,602	369,501	71%	0	152,101

South Carolina Workers' Compensation Commission
Budget vs. Actual Report
FY 2022 As of 4/30/2022
83% of year elapsed

Fund 38440000 - EARMARKED FUND

Judicial

Commitment Item	Commitment Item Description	Current Budget	YTD Expenditures	% Used	Commitments	Remaining Balance
501058	CLASSIFIED POS	470,084	398,065	85%		72,019
501070	OTH PERS SVC	62,193	42,106	68%		20,088
512001	OTHER OPERATING	12,800				
5021010003	LEGAL SRV-TRANSCRIPT		254			
5021010005	LEGAL SRV-REPORTER		2,598			
5030010000	OFFICE SUPPLIES		149			
5030067130	EQUIP&SUPP- EUC		167			
5030070000	POSTAGE		2,000			
5040490008	RENT POSTAGE EQUIP		2,145			
5040510000	INSURANCE-STATE		2,613			
5050020000	IN ST-LODGING		164			
Total OTHER OPERATING:		12,800	10,089	79%	0	2,711
Total Judicial:		545,077	450,260	83%	0	94,817

Employer Contributions

Commitment Item	Commitment Item Description	Current Budget	YTD Expenditures	% Used	Commitments	Remaining Balance
513000	EMPLOYER CONTRIB	724,260	608,384	84%	0	115,876
Total Employer Contributions:		724,260	608,384	84%	0	115,876

Total EARMARKED FUND:		5,507,845	3,178,735	58%	189,056	2,140,054
------------------------------	--	------------------	------------------	------------	----------------	------------------

South Carolina Workers' Compensation Commission
Commitments
FY 2022 As of 4/30/2022

Fund 38440000 - EARMARKED FUND

Administration

Commitment Item	Commitment Item Description	Vendor	Commitment
5021540001	PROF SRV-LANG INTER	GLOBAL INTERPRETING NETWORK INC	32
5030067101	PRGM LIC - APP SUPP	WEST PUBLISHING CORPORATION	5,878
5040060000	ST RENT-NON ST BLDG	GALIUM 1333 MAIN LLC	1,291
5040490009	RENT PARKING	REPUBLIC PARKING SYSTEM INC	2,885
5041840000	LEASE BLDG PRINCIPAL	GALIUM 1333 MAIN LLC	72,629
5041850000	LEASE BLDG INTEREST	GALIUM 1333 MAIN LLC	2,003
Total Administration:			84,718

Inform. services

Commitment Item	Commitment Item Description	Vendor	Commitment
5020010001	OFF EQ SRV-NON-IT PL	SUMMIT SOLUTIONZ INC	1,296
5020077100	SERVICES- APP SUP	INSURANCE SERVICES OFFICE INC	62,640
5020077220	SERVICES- VOICENET	NWN CORPORATION	8,640
5024990000	OTH CNT-NON-IT & REA	SUMMIT SOLUTIONZ INC	4,822
5030010003	OFF SUP&EQ-NON-IT PL	SUMMIT SOLUTIONZ INC	8,666
5030067130	EQUIP&SUPP- EUC	KEYMARK INC	4,650
5030067170	EQUIP&SUPP- PRINT EU	US INK AND TONER INC	2,440
Total Inform. services:			93,154

Total EARMARKED FUND:	189,056
------------------------------	----------------

Any items with vendor "Not assigned" are pending financial adjustments. Any commitment on the Budget vs. Actual Report that is missing from this list is a travel commitment.

South Carolina Workers' Compensation Commission
Earmarked Fund Revenues
FY 2022 As of 4/30/2022
83% of year elapsed

Account	Acct No.	Budget	YTD Actual Revenue	% of Budget
WORKERS' COMP HEARING FEE	4110090000	1,091,322	842,700	77%
W COMP SELF INS APPL FEE	4160040000	26,555	6,975	26%
W COMP FILING VIOL PENALTY	4223030000	1,985,476	1,256,587	63%
PARKING FEE	4350040000	5,900	12,105	205%
W COMP AWARD REVIEW FEE	4350140000	32,251	20,900	65%
TRNG CONF REG FEE	4380020000		800	
PHOTOCOPYING FEE	4380050000	25,300	76,611	303%
SALE OF SERVICES	4480020000		2,300	
SALE OF LISTINGS & LABELS	4480060000	4,187	2,283	55%
REFUND PRIOR YR EXPENDITURE	4520010000		11	
RETURNED CHECKS	4530010000		(32,908)	
ADJUSTMENT TO AGENCY DEPOSITS	4530020000			
MISC REVENUE	4530030000			
Total Revenues		3,170,991	2,188,364	69%

Self Insurance Tax		2,500,000	4,827,174	193%
---------------------------	--	------------------	------------------	-------------

Total		5,670,991	7,015,538	124%
--------------	--	------------------	------------------	-------------