

A G E N D A

SOUTH CAROLINA WORKERS' COMPENSATION COMMISSION

1333 Main Street, 5th Floor
Columbia, South Carolina 29201

July 18, 2022 10:30 a.m.

Meeting to be held in Hearing Room A

This meeting agenda was posted prior to the meeting and proper advance notice was made to all concerned parties in compliance with requirements in the Freedom of Information Act.

1. CALL TO ORDER CHAIRMAN BECK
2. APPROVAL OF AGENDA OF BUSINESS MEETING CHAIRMAN BECK
OF JULY 18, 2022
3. APPROVAL OF MINUTES OF THE REGULAR BUSINESS MEETING CHAIRMAN BECK
OF JUNE 20, 2022, (Tab 1)
4. GENERAL ANNOUNCEMENTS MR. CANNON
5. APPLICATIONS FOR APPROVAL TO SELF-INSURE (Tab 2) MS. BROWN
6. DEPARTMENT DIRECTORS' REPORTS MS. WARD
Human Resources (Tab 3) MS. FALLS
Information Services (Tab 4) MR. DUCOTE
Insurance and Medical Services (Tab 5) MS. SPANN
Claims (Tab 6) MS. BRACY
Judicial (Tab 7)
8. EXECUTIVE DIRECTOR'S REPORT (Tab 8) MR. CANNON
9. FINANCIAL REPORT (Tab 9) MR. CANNON
10. OLD BUSINESS CHAIRMAN BECK
11. NEW BUSINESS CHAIRMAN BECK
12. EXECUTIVE SESSION CHAIRMAN BECK
General Counsel has requested an Executive Session to discuss pending litigation.
12. ADJOURNMENT CHAIRMAN BECK

Table of Contents

1	Approval of Minutes of Business Meeting of June 20, 2022
2	Self-Insurance
3	Human Resources
4	Information Services
5	Insurance & Medical Services
6	Claims
7	Judicial
8	Executive Director's Report
9	Financial Report

TAB 1

THE
SOUTH CAROLINA WORKERS'
COMPENSATION COMMISSION
BUSINESS MEETING
June 20, 2022

A Business Meeting of the South Carolina Workers' Compensation Commission was held in Hearing Room A of the Workers' Compensation Commission on Monday, June 20th, 2022, at 10:30 a.m. The meeting agenda was posted prior to the meeting and proper advance notice was made to all concerned parties in compliance with requirements in the Freedom of Information Act. The following Commissioners were present:

T. SCOTT BECK, CHAIRMAN
SUSAN S. BARDEN, VICE CHAIR
R. MICHAEL CAMPBELL, II, COMMISSIONER
MELODY L. JAMES, COMMISSIONER
GENE MCCASKILL, COMMISSIONER
AISHA TAYLOR, COMMISSIONER
AVERY WILKERSON, COMMISSIONER

Present also were Gary Cannon, Executive Director; Keith Roberts, General Counsel, Christy Brown, Self-Insurance Director; Kris Pluss, Director of Information Technology; Wayne Ducote, Insurance & Medical Services Director; Sonji Spann, Claims Director; Kristen Mcree, Staff Attorney; Kim Falls, Business Analyst and Bonnie Anzelmo, Injured Workers' Advocates.

Chairman Beck called the meeting to order at 10:33 a.m.

AGENDA

Commissioner Barden moved that the agenda be approved. Commissioner McCaskill seconded the motion, and the motion was approved.

APPROVAL OF MINUTES – BUSINESS MEETING OF May 16, 2022

Commissioner Barden moved that the minutes of the Business Meeting of May 16, 2022, be approved. Commissioner Taylor seconded the motion, and the motion was approved.

GENERAL ANNOUNCEMENTS

Director Cannon introduced his new Executive Assistant, Arnisha Keitt.

APPLICATIONS FOR APPROVAL TO SELF-INSURE

Self-insurance applications were presented by Christy Brown, Self-Insurance Director. **Seven (7)** prospective members of **Three (3)** funds were presented to the Commission for approval. The applications were:

Palmetto Timber Fund
Cox Forest Products LLC
Koons Sawmill Inc

South Carolina Home Builders SIF
B.R. Black Plumbing LLC

Camp/Sawyer Carpentry
Doug Dobbins DBA Dobbins and Co, Inc
Upper Star Renovation, Inc

South Carolina Automobile Dealers Association
Beach Buick GMC, Inc

After examination of the applications, it was determined that each complied with the Commission's requirements, and each was recommended for approval. Commissioner Taylor made the motion to approve the applications to self-insure, and Commissioner McCaskill seconded the motion. The motion was unanimously approved.

DEPARTMENT DIRECTORS' REPORTS

Each Department report was submitted in written form and included in the Commission's agenda booklets.

Human Resources

Ms. Ward submitted the Human Resources report. There were no comments or questions from the Commission.

Information Technology Department

Ms. Falls submitted the IT report. Ms. Falls also introduced the new IT Director, Kris Pluss. There were no questions from the Commission.

Insurance and Medical Services Department

Mr. Ducote submitted his report in written form. There were no questions from the Commission.

Claims Department

Ms. Spann submitted her report in written form. There were no questions from the Commission.

Judicial Department

Chairman Beck noted that Ms. Bracy was not in attendance however, she submitted her report in written form. There were no questions from the Commission.

VOCATIONAL REHABILITATION

Mr. Cannon submitted the report received from Vocational Rehabilitation. There were no questions from the Commission.

EXECUTIVE DIRECTOR'S REPORT

Mr. Cannon submitted his report in written form. There were no questions from the Commission.

ADMINISTRATION – FINANCIAL REPORT

Mr. Cannon submitted his report in written form. There were no questions from the Commission.

OLD BUSINESS

There was no old business.

NEW BUSINESS

Commissioner Barden made a motion to approve the changes to the Court Reporters Policy with Amendments. Commissioner Campbell seconded the motion. The motion passed.

Keith Roberts proposed a Notice of draft to Regulation 67-610 in the State Register. Commissioner Wilkerson made a motion to file the changes. Commissioner Barden seconded the motion. The motion passed.

Commissioner Barden resigned as Vice Chair. Commissioner Wilkerson nominated and made a motion to appoint Commissioner McCaskill as Vice Chair. Commissioner James seconded the motion. The motion passed.

EXECUTIVE SESSION

Commissioner Taylor made a motion to move into Executive Session to discuss pending litigation matters. Commissioner James seconded the motion, and the motion was approved. The Commission went into Executive Session at 10:58 a.m.

Commissioner Barden made the motion to leave Executive Session at 11:22 a.m. noting that no action was taken. Commissioner McCaskill seconded the motion, and the motion was approved.

ADJOURNMENT

Commissioner McCaskill made the motion to adjourn. Commissioner Barden seconded the motion, and the motion was approved.

The June 20, 2022, meeting of the South Carolina Workers' Compensation Commission adjourned at 11:24 a.m.

Reported June 21, 2022
Arnisha Keitt
Executive Assistant

TAB 2

TAB 3

State of South Carolina

1333 Main Street, 5th Floor
P.O. Box 1715
Columbia, S.C. 29202-1715



TEL: (803) 737-5700
FAX: (803) 737-5764

Workers' Compensation Commission

TO: Gary Cannon

FROM: Bridget Ward

DATE: July 8, 2022

SUBJECT: Monthly Human Resources Report for July 2022 Business Meeting

This report summarizes the activities of Human Resources during the period of June 1, 2022 through June 30, 2022.

At the end of June, the Commission had 48 full time employees, one part-time employee.

- **New Hires:** One
- **Promotion:** One
- **Separations or Retirements:** Two
- **FMLA Leaves:** None

In the month of June twelve SCEIS personnel transactions and eleven SCEIS time/leave transactions were processed. Detailed payroll and time/leave reports were ran as scheduled and any issues that arose were corrected with the collaborative effort of either the SCIES team or the Comptroller General Office.

General Assembly legislated in the Fiscal Year 2022 – 2023 General Appropriations Act to provide for a 3% general base pay increase for classified and unclassified employees effective the first pay date on or after July 1, 2022. Also included in the General Appropriation Act are provisions for a \$1,500 one-time lump sum bonus for state employees in full-time equivalent positions who have been in continuous state services for at least six months prior to July 1, 2022. The bonus is to be paid on the first pay date that occurs on or after Oct. 17, 2022.

Nine "All Employee" emails were sent by HR during the month of June, and 21 travel reports were processed. HR received and reviewed 1227 emails and sent 960 emails.

There were three building issues and one parking issue in June and all were resolved in a timely manner. There were two updates to the parking assignments.

There were three COVID cases in the month of June. The employees returned to work after protocol was followed, contact tracing was done and the appropriate quarantine/isolation period was observed.

The new Director of IT came to us from the Department of Administration – DTO and started on June 2. There was a promotion within IT in which the Information Systems/Business Analyst III position was filled, and HR posted the Information Systems/Business Analyst I to seek a replacement. The interview process concluded for the Program Manager I for the IMS Division and the new Director of Coverage & Compliance was scheduled to start on July 5. The Commission lost an Administrative Coordinator II late June and HR will post the position to find a replacement in July.

TAB 4

State of South Carolina

1333 Main St, Suite 500
P.O. Box 1715
Columbia, S.C. 29202-1715



Tel: (803) 737-5700
Fax: (803) 737-1258
www.wcc.sc.gov

Workers' Compensation Commission

To: Gary Cannon, SCWCC Executive Director
From: Kris Pluss, IT Director
Date: July 8, 2022
Subject: IT Department June 2022 Full Commission Report

This report summarizes the activities and accomplishments for projects and initiatives in the IT department during June 2022.

I. Systems Operations, Maintenance and Support

EDI

Staff is continuing to work with the ISO/Verisk to establish processes and an implementation plan for the EDI claims processing turnover. We continue our participation in IAIABC conference calls for: Jurisdiction Only meetings, EDI Claims Committee and the POC 3.0 taskforces.

Progress

Duane, Liz, and Kim upgraded Progress to version 12. The new version supported by the vendor and is no longer hosted on legacy 2008 Microsoft servers. IT Staff worked through several break-fix issues for WCC staff and stakeholders. IT Staff will continue to resolve issues related to the upgrade and to the firewall maintenance that was completed by DTO.

Systems Support

The IT team continues to collectively manage all end user support. Liz and Douglas have assumed the primary responsibility of managing the helpdesk ticketing system and all related documentation. Liz and Douglas assisted in transition from Commissioner Barden to Commissioner Dooley.

Security

We had no security alerts in June.

Reporting

The IT team generated several reports for internal and external stakeholders.

II. Projects, Enhancements and Development

Legacy Modernization

After the review of the vendors proposals, the Commission decided that it is in the best interest of the state to cancel the solicitation. The cancellation was posted on June 29th, 2022.

TAB 5

State of South Carolina



Workers' Compensation Commission

To: Mr. Gary Cannon
SCWCC Executive Director

From: Wayne Ducote, Jr.
IMS Director

Date: 13-Jul-22

Subj: Insurance and Medical Services Department
June 2022 Full Commission Report

Please find attached information provided to summarize the status and workflow of initiatives currently underway within the Insurance and Medical Services (IMS) Department.

In addition to the statistical data provided, please be advised of the following:

- | | |
|---------------------|--|
| Compliance Division | <ol style="list-style-type: none">1. Reviewing revenue metrics / projections.2. Working with staff to review workflow processes and additional training opportunities.3. Continuing to explore outreach opportunities with stakeholders. |
| Coverage Division | <ol style="list-style-type: none">1. Working with staff to review workflow processes and explore opportunities to enhance service provision.2. Lapse in Coverage: 35 new registrants; 0 notifications sent. |
| Medical Services | <ol style="list-style-type: none">1. Processing six medical bill reviewer certifications and renewals.2. Two medical bill pricing reviews were done in the month of June. |

While this summary is in no way all-inclusive, it may serve to assist you and our Commissioners in understanding the key initiatives underway in the IMS Department and provide measures by which the Department's effectiveness can be gauged. IMS welcomes any guidance that you and/or our Commissioners can provide concerning our performance and direction.

Employer Rule to Show Cause Hearings and Compliance Activity

The Compliance Division docketed 3 new RTSC cases and 7 total RTSC cases in the month of June. And, compelled 34 South Carolina employers to come into compliance with the Act. Year to date, 18 new RTSC cases and 39 total RTSC cases have been docketed.

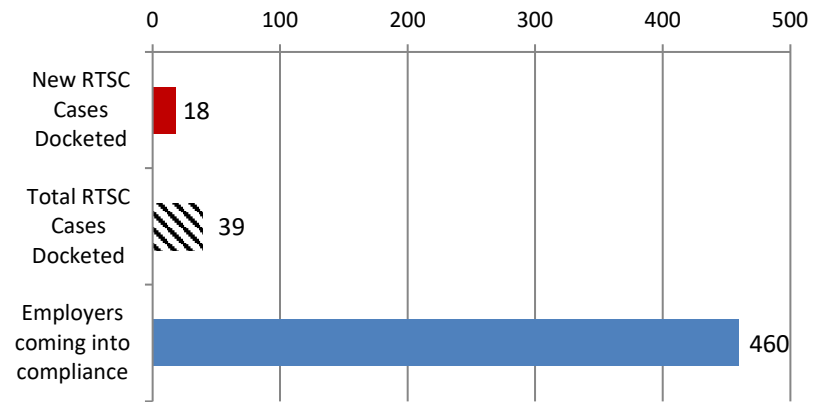
Employers Obtaining Coverage

Year to date, the Compliance Division has compelled 460 South Carolina employers to come into compliance with the Act. In so doing, approximately 3,814 previously uninsured workers are now properly covered.

Penalties Waived

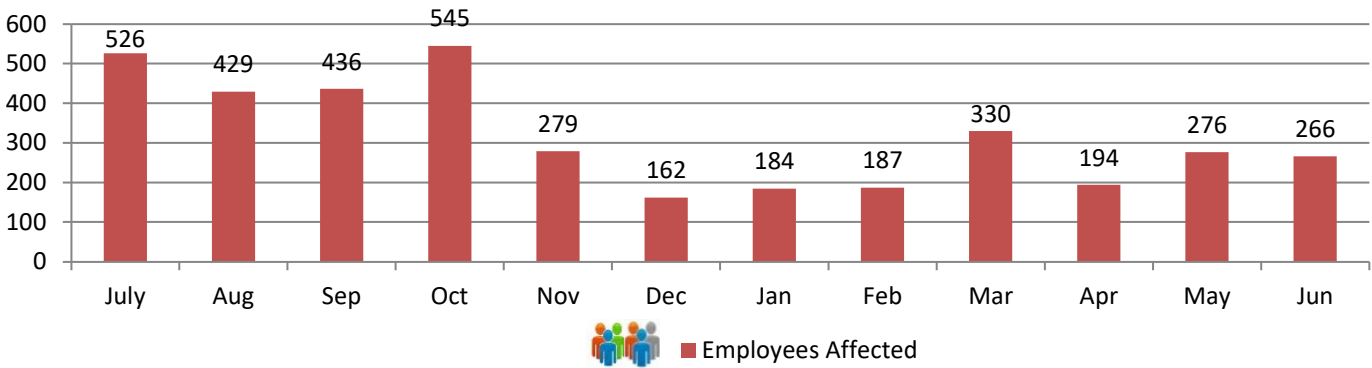
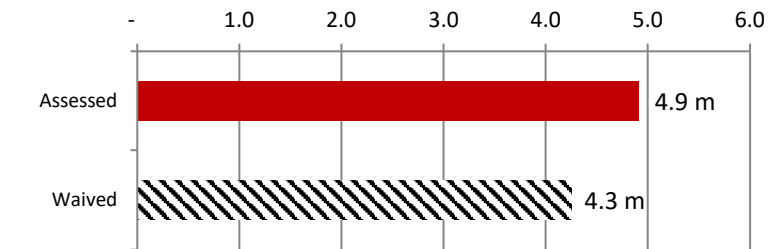
Although the Division has assessed \$4.9 m in fines this fiscal year, \$4.3 m have been waived or rescinded as employers have either obtained insurance coverage or were found not to be subject to the Act.

RTSC and Compliance Activity



Fines and Penalties

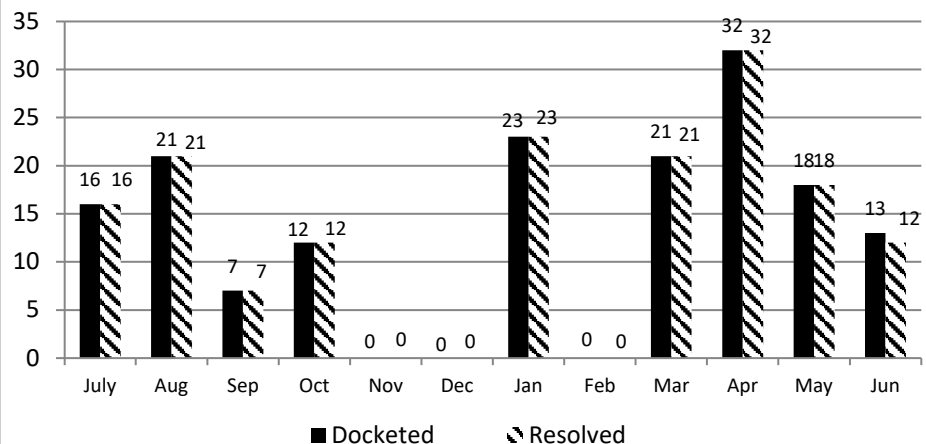
Millions



Carrier Rule to Show Cause Hearings

The Compliance Division manages the Rule to Show Cause process involving the recovery of outstanding carrier fines and penalties. In the month of June 2022, 13 carrier RTSC cases were docketed; 12 cases were resolved for a total of \$10,779.

Year to date, a total of 163 carrier RTSC cases have been docketed, 162 cases for a total of \$94,636 have been resolved.

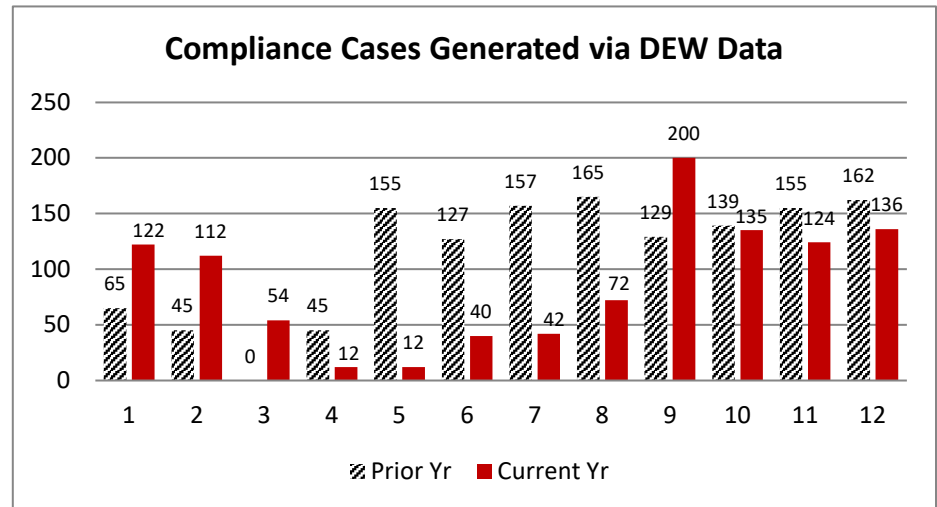
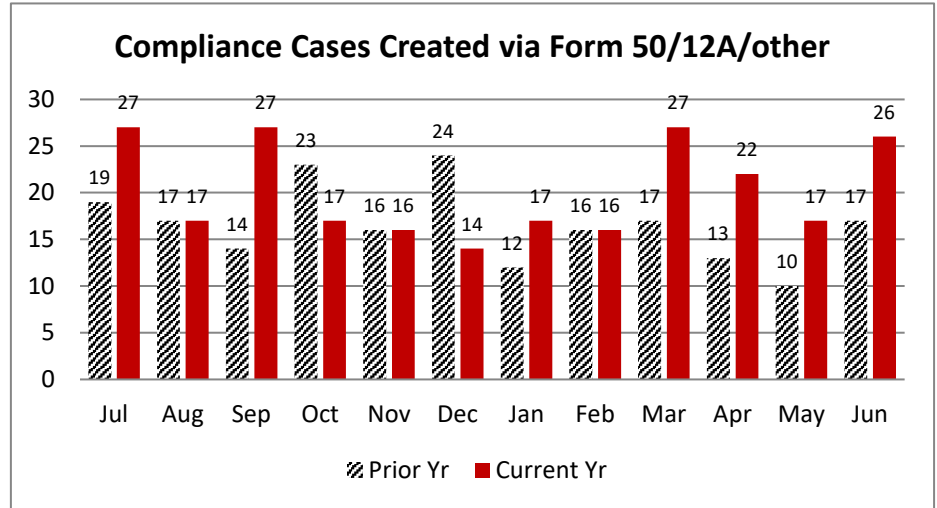


In June 2022, 26 compliance files were created from the combined filings of Form 50's, 12A's, and stakeholder reporting involving uninsured employers.

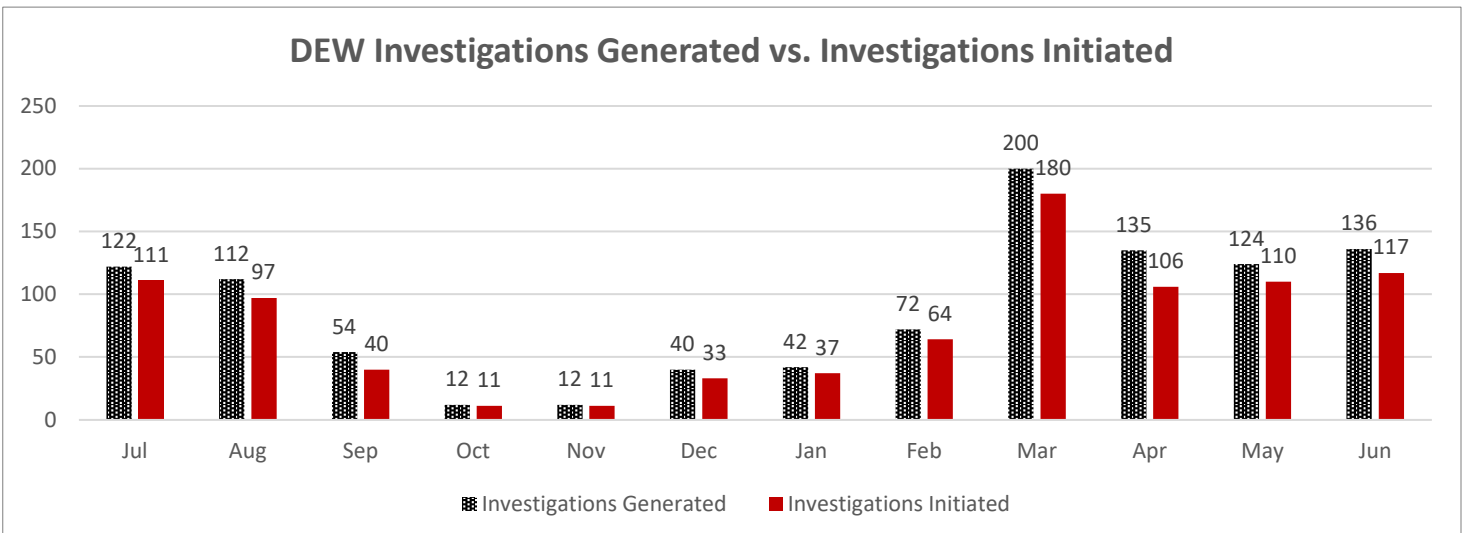
YTD vs. Prior Year total (198): 123%
 June 2021 to June 2022: 153%
 Current Yr End trend: 123% of 2020-2021
 YTD 2021-2022 v. YTD 2020-2021: 123%

In June 2022, 136 compliance files were generated from the DEW data process.

YTD vs. Prior Year total (1,344): 79%
 June 2021 to June 2022: 84%
 Current Yr End trend: 79% of 2019-2020
 YTD 2021-2022 v. YTD 2020-2021: 79%



The DEW Data Pool is determined by the total number of potential, non-compliant employers who report wages to DEW with at least 4 employees and who's FEIN does not match with any coverage records in the Commission's coverage database. The investigations generated is the number of compliance investigations generated from the pool. The investigations initiated is the number of compliance investigations initiated from those that were generated.



Carryover Caseload:

The Compliance Division closed June 2022 with 373 cases active, compared to an active caseload of 307 at the close of June 2021.

Cases Resolved:

For the month of June 2022, Compliance Division staff closed-out 209 cases.

Compliance Fines:

In June 2022, the Compliance Division collected \$65,602 in fines and penalties. Year to Date, the Compliance Division has collected \$686,193 in fines and penalties.

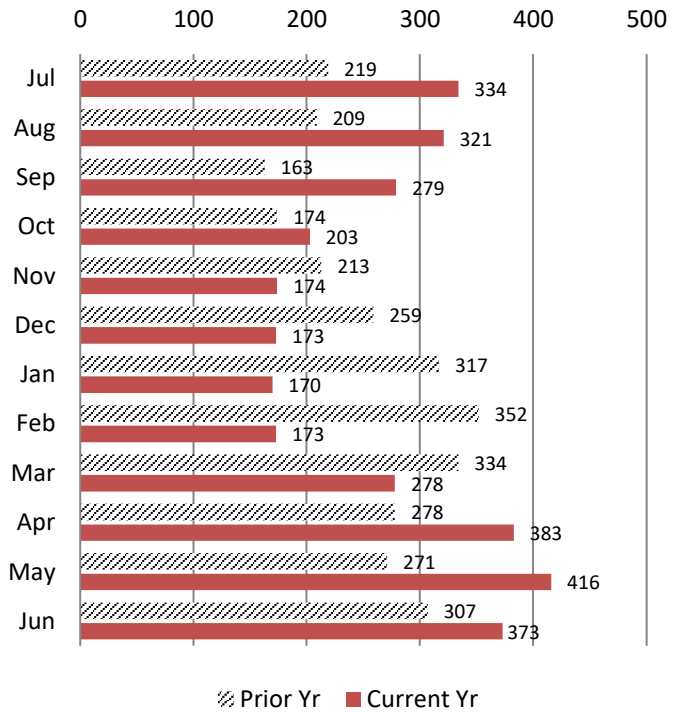
Year to Date vs Prior Year Total (\$785,893): 87%

June 2021 vs. June 2022: 49%

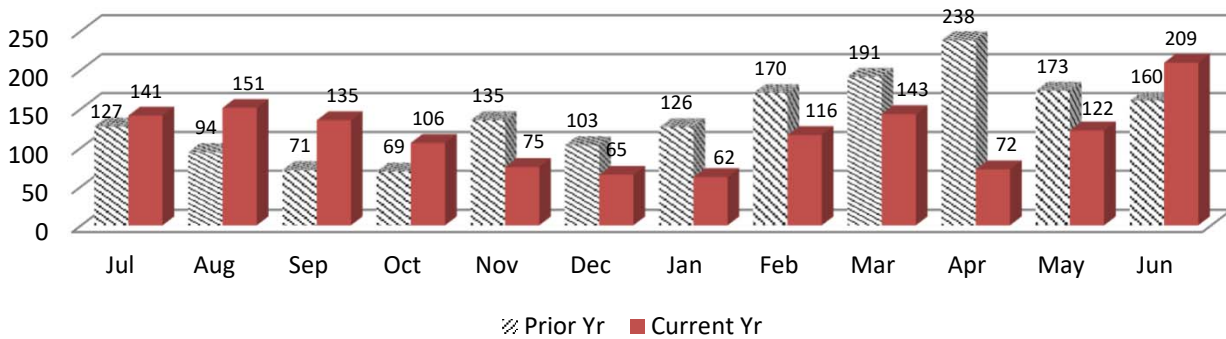
Current Year End trend is 87% of 2020-2021

YTD 2020-21 (June - June) vs YTD 2021-2022: 87%

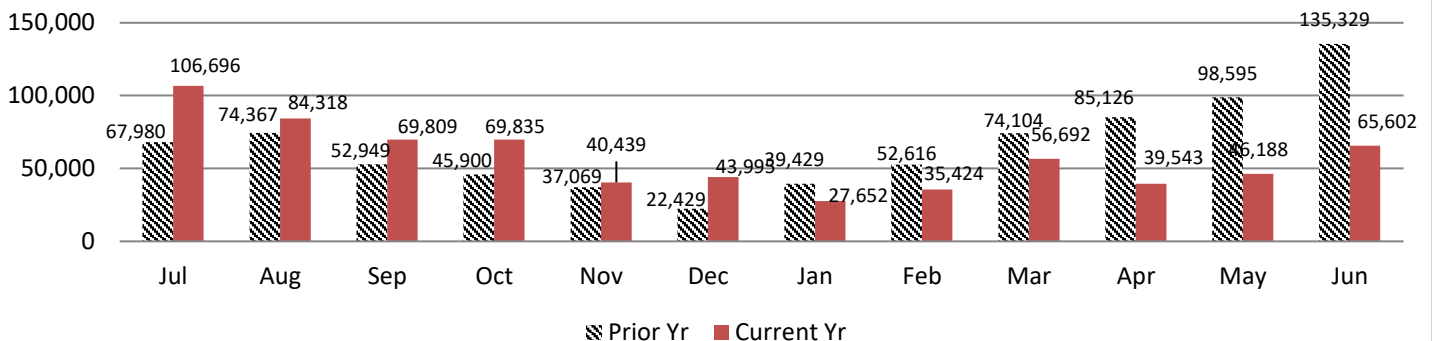
Caseload Pending v. Prior Year



Cases Resolved v. Prior Year



Compliance Fines Collected v. Prior Year

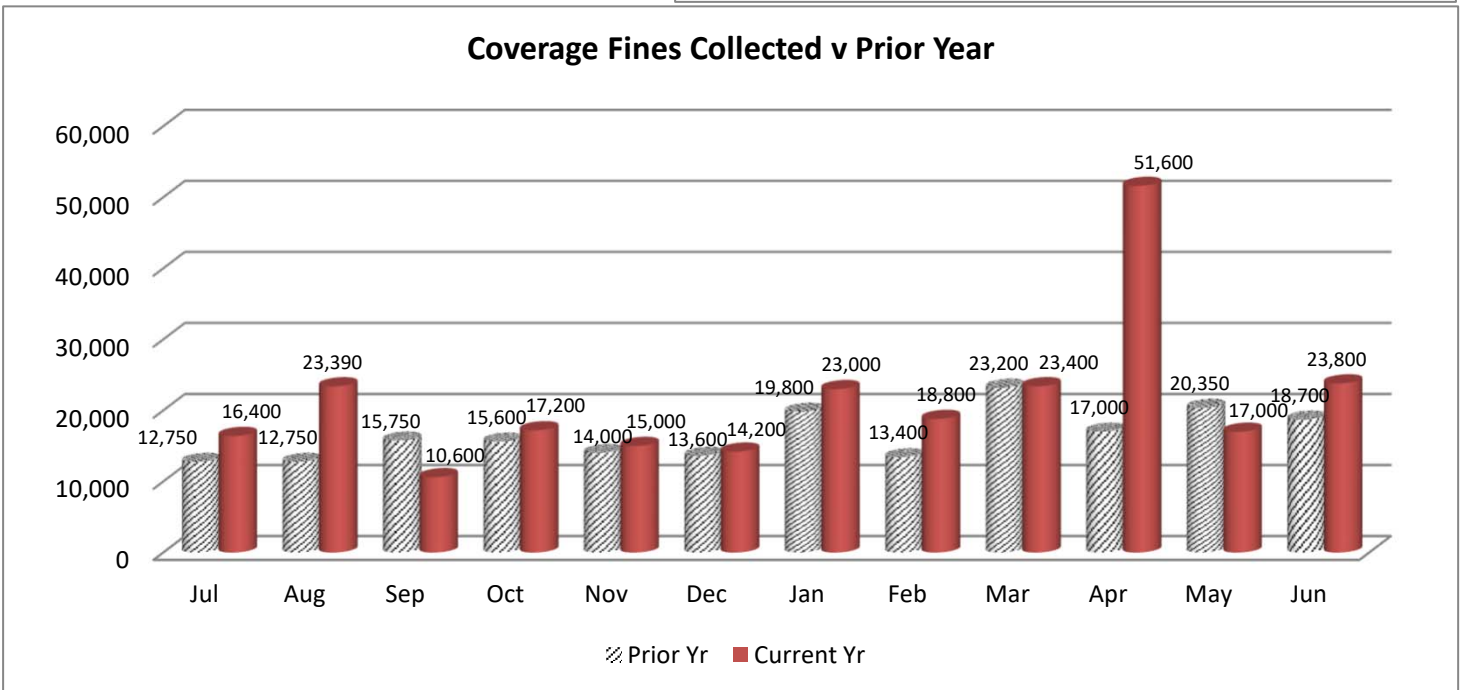
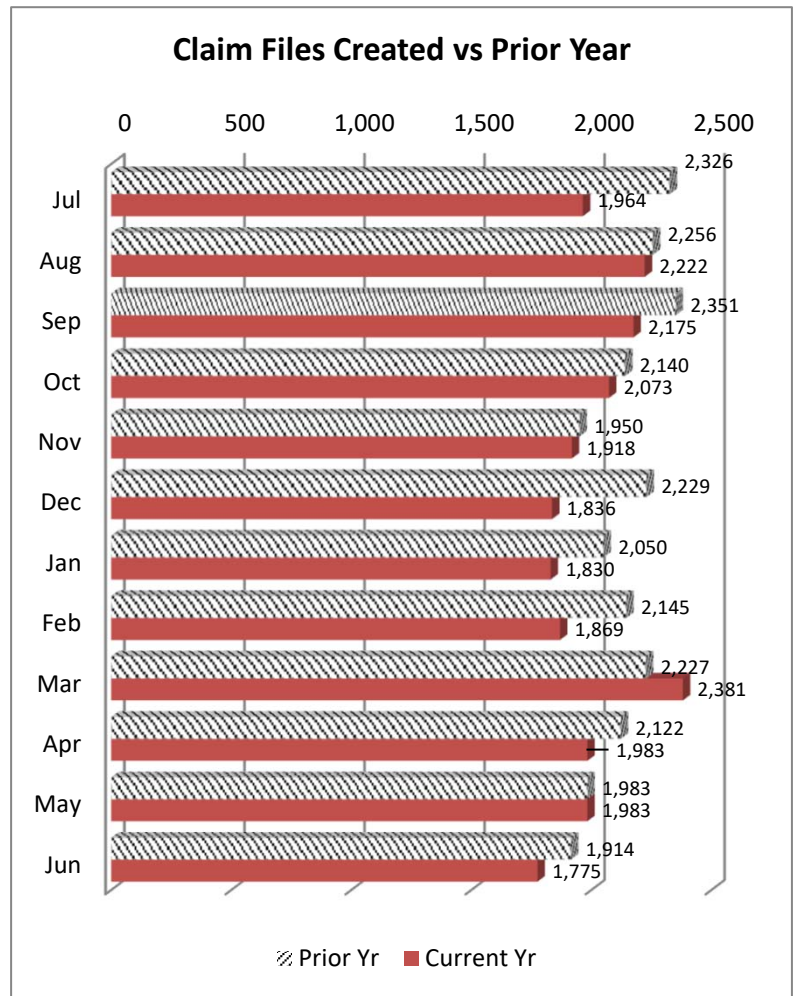


WCC Claim Files:

In June 2022, the Coverage Division received a total of 1,775 WCC Claim files. Of these, 1,479 were created through proper carrier filing of a 12A, and 296 were generated as a result of a Form 50 claim filing. Year to Date 24,009 Claim files have been created which is 93% of claim file volume prior year (25,693).

Coverage Fines:

The Coverage Division collected \$23,800 in fine revenue in June 2022, as compared to \$18,700 in Coverage fines/penalties accrued during June 2021. Year on Year, Coverage fines are at 129% of collections for prior year.



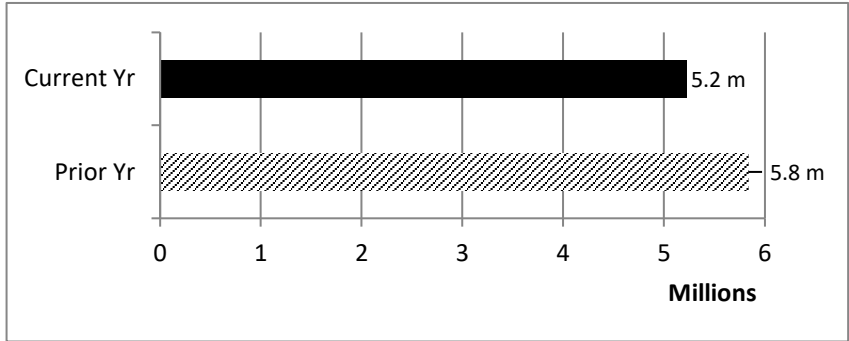
IMS SELF INSURANCE DIVISION

June 2022

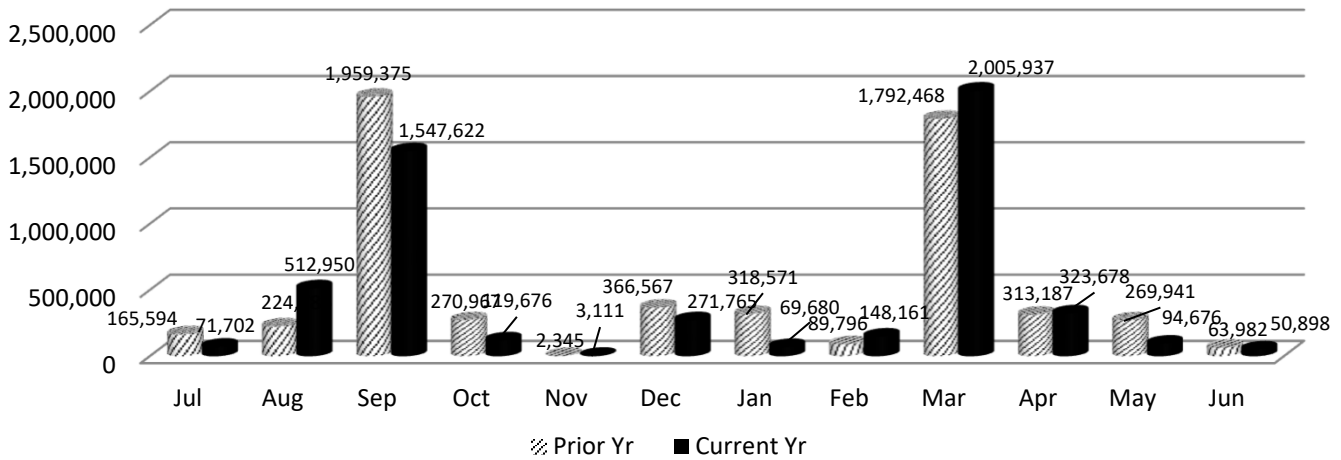
During the month of June 2022, the Self Insurance Division:

- * collected \$50,898 in self-insurance tax.
- * added 7 new self-insurers.
- * conducted 4 Self Insurance audits.

Year to Date, Self Insurance tax revenue is trending at 89% of prior year and 48 Self Insurance audits have been completed.



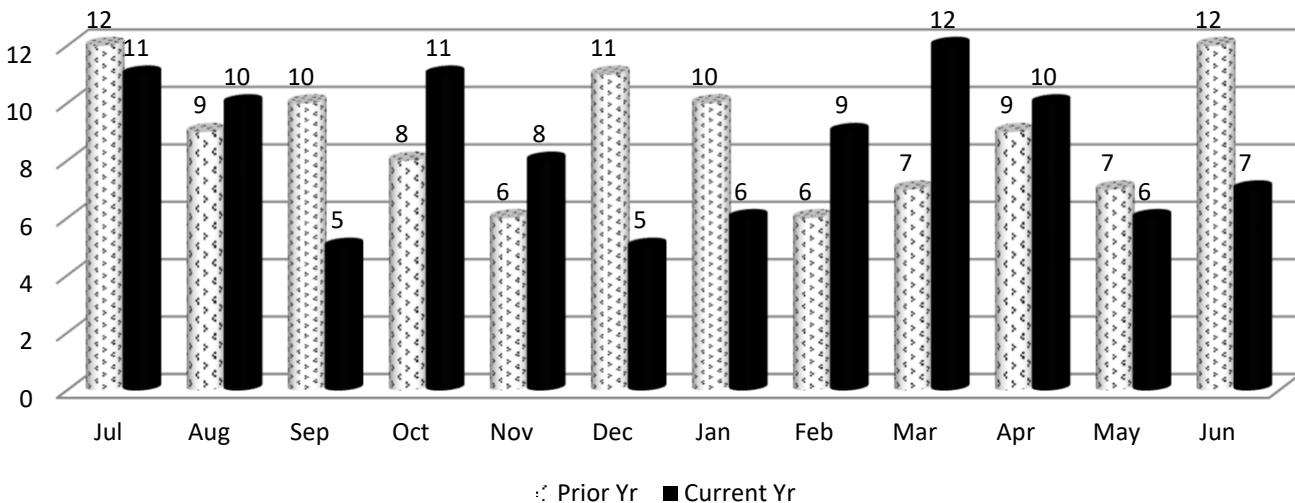
Self Insurance Tax Collections v. Prior Year



IMS MEDICAL SERVICES DIVISION

In June 2022, the Medical Services Division began the month with 6 bills pending review, received an additional 14 bills for review, conducted 13 bill reviews and ended the month with 7 bills pending.

Medical Bills Pending Review v. Prior Year



TAB 6

State of South Carolina

1333 Main Street, 5th Floor
P.O. Box 1715
Columbia, S.C. 29202-1715



TEL: (803) 737-5700
www.wcc.sc.gov

Workers' Compensation Commission **MEMORANDUM**

To: Gary Cannon, Executive Director

From: Sonji Spann, Claims Director

Date: July 5, 2022

Re: Claims Department July 2022 Full Commission Report

Attached is the Statistical Report for the Claims Department for the period July 1, 2021 through - June 30, 2022 for the Business Meeting on July 18, 2022. Please note the format using row numbers and column letters for ease of use when referencing data.

Claims activities are in Column (a) with the totals for the seven-month period for FY21-22 in column (o). Column (q) reflects the percentage change when comparing the totals for same period in the current fiscal at the totals for the same period in last fiscal year. The total Claims Activities, for this period have decreased 1% when compared to the same period from last fiscal year.

The number of Total Fines assessed are up 13% compared to the same period last fiscal year and the Total Fines paid 47% higher when compared to the same period last year

I will be happy to answer any questions you or the Commissioners have.

Claims Department Statistical Report

FY2021-2022

July 1, 2021 - June 30, 2022

	Claims Activities	July	August	Sept	Oct	Nov	Dec	Jan	Feb	March	April	May	June	FY21-22 Total	FY20-21 Total	% Chg same period FY20-21
Col. > Row v	(a)	(b)	(c)	(d)	(e)	(f)	(g)	(h)	(i)	(j)	(k)	(l)	(m)	(o)	(p)	(q)
1	Forms 15-I	1,023	1,157	1,153	1,077	1,073	1,030	882	920	1,192	1,035	1,081	1,062	12,685	13,499	-6%
2	Forms 15-II/Forms 17	933	1,028	922	970	897	856	367	803	1,038	918	928	972	10,632	11,769	-10%
3	Forms 16 for PP/Disf	187	216	215	236	180	289	192	207	264	197	200	215	2,598	2,340	11%
4	Forms 18	4,325	4,511	4,491	4,073	4,310	4,121	4,306	4,701	4,901	4,371	4,350	3,658	52,118	49,470	5%
5	Forms 20	546	591	559	589	574	2,111	537	502	598	553	590	606	8,356	6,593	27%
6	Form 50 Claims Only	291	316	241	286	290	504	218	279	327	249	268	279	3,548	3,150	13%
7	Form 61	652	655	607	656	672	751	641	626	697	668	693	651	7,969	7,957	0%
8	Letters of Rep	251	258	219	201	204	169	186	216	229	160	189	209	2,491	2,471	1%
9	Clinchers	831	744	818	786	798	872	855	785	866	815	792	774	9,736	10,013	-3%
10	Third Party Settlements	14	24	19	17	12	15	19	17	25	23	25	25	235	154	53%
11	SSA Requests for Info	64	49	35	42	42	29	30	26	37	43	38	20	455	459	-1%
12	Cases Closed	2,028	2,233	2,275	2,136	2,049	2,111	2,103	2,027	2,553	2,179	1,987	2,091	25,772	27,381	-6%
13	Cases Reviewed	2,849	3,742	2,694	2,261	2,228	2,435	2,909	2,953	3,407	3,406	2,736	3,939	35,559	37,119	-4%
14	Total	13,994	15,524	14,248	13,330	13,329	13,433	13,245	14,072	16,134	14,617	15,864	14,501	172,291	172,375	-1%
15														-	-	
16	Total Fines Assessed	297	338	221	184	119	310	543	328	370	334	274	341	3,659	2,882	13%
17	Form 18 Fines	331	321	211	184	118	310	530	316	365	314	267	330	3,597	2,634	37%
18	Total Amt Paid	\$38,650	\$60,800	\$59,450	\$33,400	\$23,800	\$34,400	\$47,400	\$35,200	\$52,400	\$86,500	\$45,850	\$40,650	558,500	379,100	47%

TAB 7

State of South Carolina

1333 Main Street
P.O. Box 1715
Columbia, S.C. 29202-1715



Tel: (803) 737-5700
Fax: (803) 737-1234
www.wcc.sc.gov

Workers' Compensation Commission

July 8, 2022

To: Gary Cannon
Executive Director

From: Amy A. Bracy
Judicial Director

RE: Monthly Judicial Report for June 2022

During the month of June, the Judicial Department processed eight hundred forty-two (842) requests for hearings (claimant and defense pleadings). Comparing the numbers from the same period last year, claimant pleadings are up 3% and defense pleadings experienced a 10% decrease. The department received one hundred eight (108) Motions, a 12% decrease compared to the same period last year and one hundred forty (140) clincher conference requests, down 6% compared to last year.

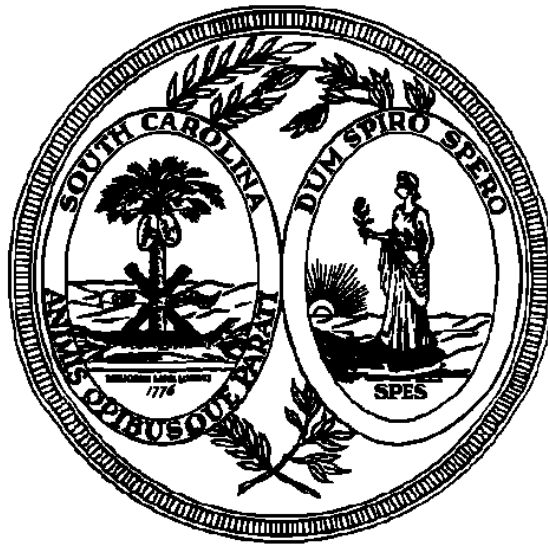
There were fifty-two (52) Single Commissioner Hearings conducted during the past month, thirteen (13) pre-hearing conferences held, and six (6) Full Commission hearings held. A total of five hundred forty-three (543) Orders (Single Commissioner Orders, Consent Orders and Administrative Orders) were served at the single Commissioner level, sixty (60) of those were Decision and Orders that resulted from hearings that went on the record and one hundred forty-eight (148) were Motion Orders that were a result of Motions ruled upon by Commissioners.

There were two hundred thirty-eight (238) Informal Conferences requested during June and two hundred seven (207) were conducted.

There were thirty-six (36) regulatory mediations scheduled and forty-one (41) requested mediations. Totals are down 10% and 6% in the respective categories for the same period last year. The Judicial Department was notified of forty-one (41) matters resolved in mediation, with the receipt of Forms 70. This category's total is down 12% compared to the same period last year.

In the month of June, Judicial received three (3) Notices of Intent to Appeal to the Court of Appeals and zero (0) to the Circuit Court.

SCWCC Judicial Report



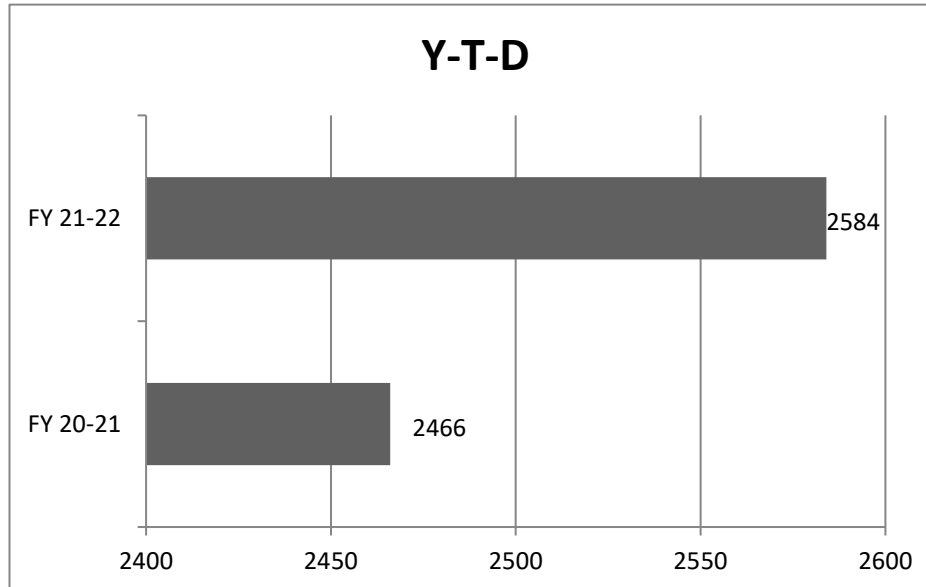
July 2022

**Judicial Department Statistical Report
Statistics For Fiscal Year 2021-2022**

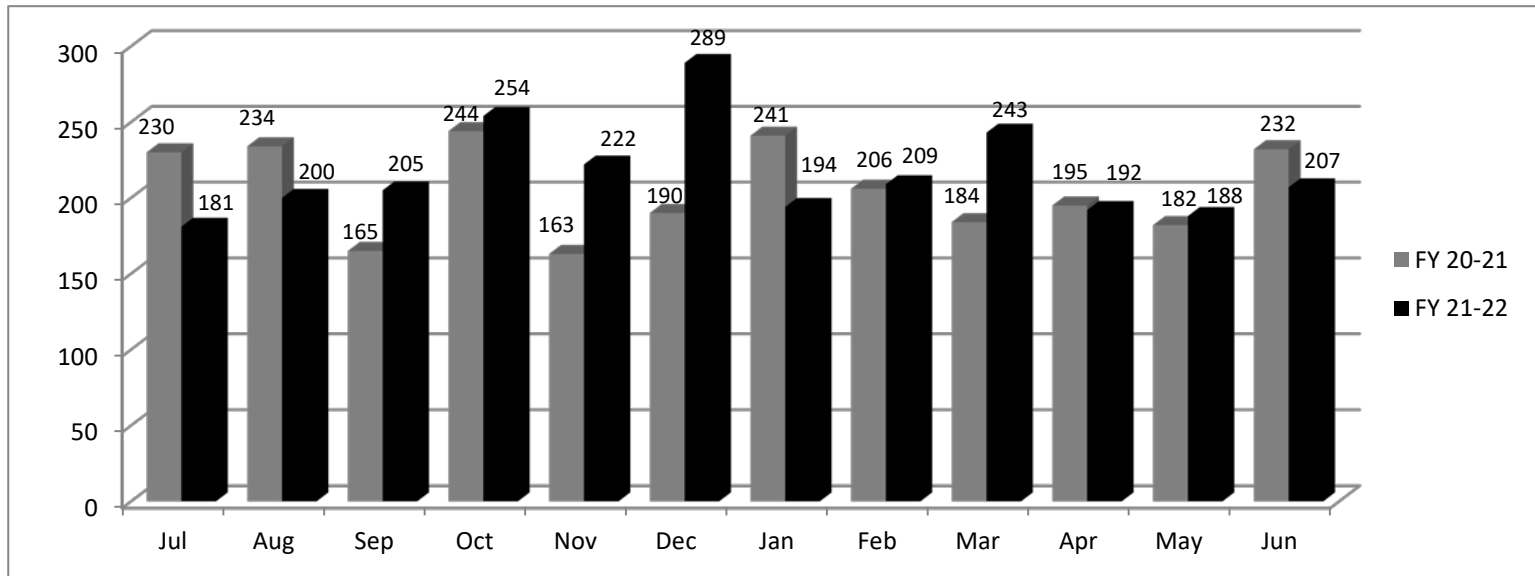
	July	Aug	Sept	Oct	Nov	Dec	Jan	Feb	March	April	May	June	Totals YTD 2021-2022	Totals YTD 2020-2021	% Diff from prev year	YTD Diff + (-)	FY21-22 Mth Avg	FY20-21 Mth Avg
Claimant Pleadings	484	560	496	512	502	469	486	574	578	548	523	572	6,304	6,123	3%	181	525	510
Defense Response to Pleadings	409	406	466	376	407	441	376	410	517	463	432	485	5,188	5,160	1%	28	432	430
Defense Pleadings	287	285	310	266	229	257	270	268	300	262	252	270	3,256	3,611	-10%	(355)	271	301
Motions	140	120	109	107	109	94	111	106	104	113	130	108	1,351	1,531	-12%	(180)	113	128
Form 30	14	21	6	9	15	9	13	18	15	11	13	18	162	138	17%	24	14	12
FC Hearings Held	7	8	8	7	10	8	8	10	8	7	9	6	96	59	63%	37	8	5
FC Orders Served	14	14	11	8	9	5	12	9	8	14	9	20	133	92	45%	41	11	8
Single Comm. Hearings Held	40	61	52	67	55	45	53	61	49	74	53	52	662	835	-21%	(173)	55	70
Single Comm. Orders Served	215	189	204	154	141	180	189	167	186	203	188	226	2,242	2,418	-7%	(176)	187	202
Single Comm. Pre-Hearing Conf Held	14	11	26	13	14	12	11	18	11	9	20	13	172	282	-39%	(110)	14	24
Consent Orders	211	218	256	229	239	207	303	237	272	281	245	303	3,001	3,219	-7%	(218)	250	268
Administrative Orders	4	19	12	21	13	5	9	2	14	7	12	14	132	216	-39%	(84)	11	18
Clincher Conference Requested	109	149	154	145	136	140	112	137	131	138	144	140	1,635	1,748	-6%	(113)	136	146
Informal Conference Requested	228	278	274	247	195	250	323	249	317	245	244	238	3,088	3,269	-6%	(181)	257	272
Informal Conference Conducted	181	200	205	254	222	289	194	209	243	192	188	207	2,584	2,466	5%	118	215	206
Regulatory Mediations	26	21	32	27	26	20	27	22	29	41	35	36	342	379	-10%	(37)	29	32
Requested Mediations	65	65	52	55	43	24	46	58	44	71	44	41	608	647	-6%	(39)	51	54
Ordered Mediations	0	0	0	0	0	0	0	1	1	0	0	1	3	7	-57%	(4)	0	1
Mediation Resolved	44	63	59	47	44	44	33	43	68	28	62	41	576	655	-12%	(79)	48	55
Mediation Impasse	22	19	11	14	8	14	12	19	21	7	15	20	182	191	-5%	(9)	15	16
Mediation Held; Issues Pending	0	2	2	0	5	0	0	0	1	0	0	2	12	8	0%	4	1	1
Claim Settled Prior to Mediation	7	14	14	9	10	13	9	14	9	1	5	8	113	115	-2%	(2)	9	10
Mediation Not Complete in 60 days	4	1	2	1	3	2	2	10	0	1	0	1	27	26	4%	1	2	2

Informal Conf. Conducted

	FY 20-21	FY 21-22
Jul	230	181
Aug	234	200
Sep	165	205
Oct	244	254
Nov	163	222
Dec	190	289
Jan	241	194
Feb	206	209
Mar	184	243
Apr	195	192
May	182	188
Jun	232	207
Total	2466	2584

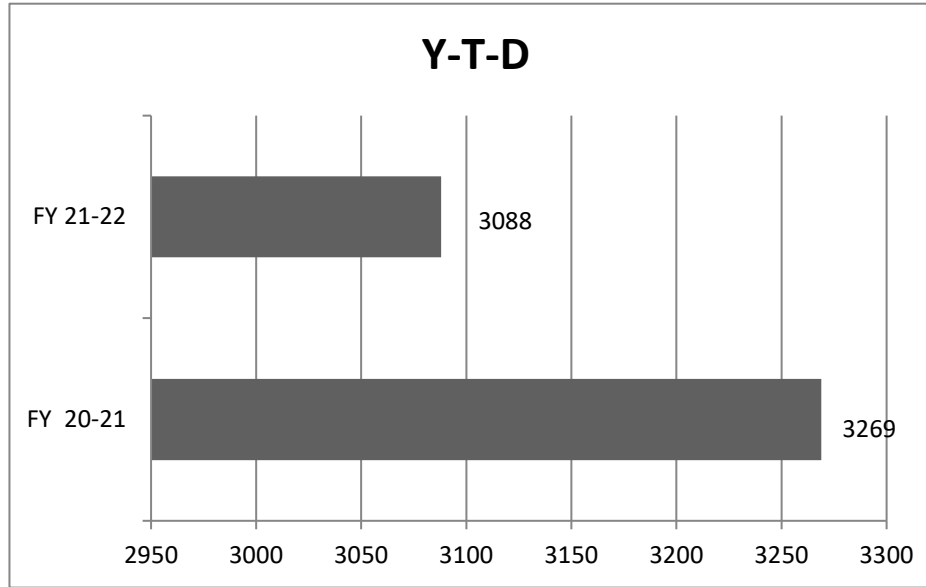


Y-T-D	FY 20-21	FY 21-22
	2466	2584

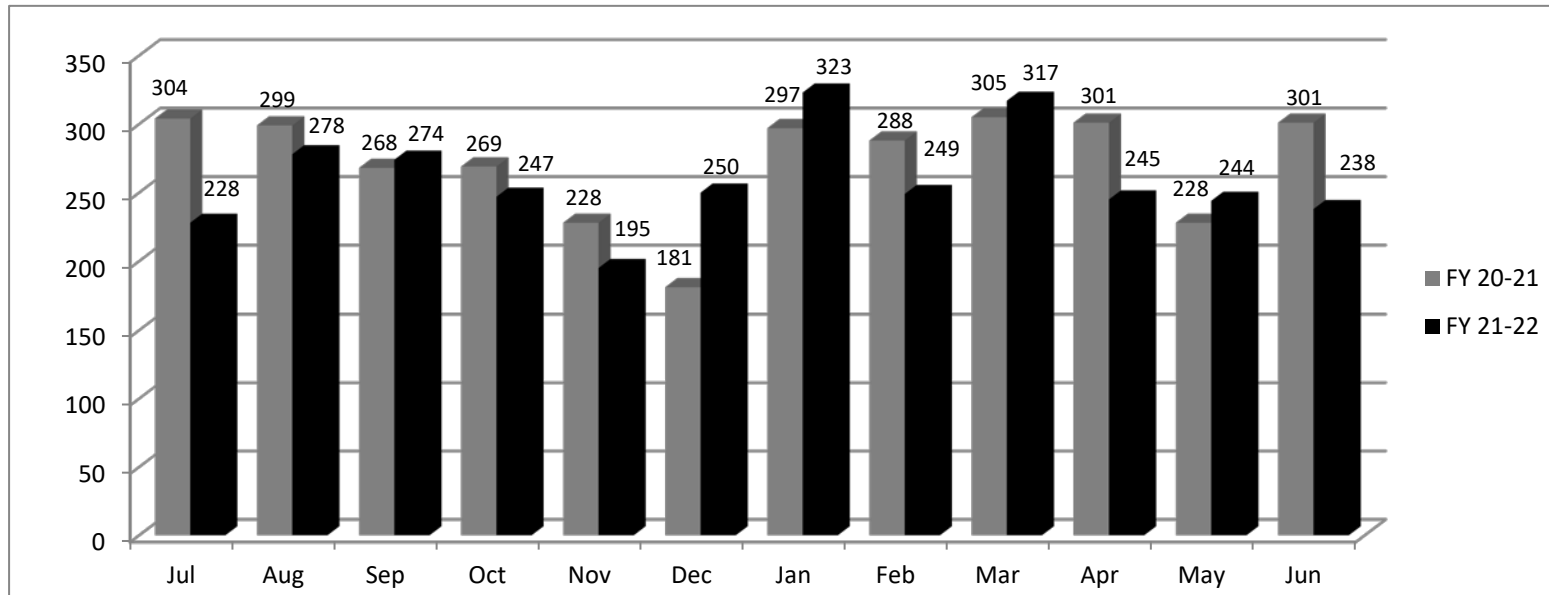


Informal Conf. Requested

	FY 20-21	FY 21-22
Jul	304	228
Aug	299	278
Sep	268	274
Oct	269	247
Nov	228	195
Dec	181	250
Jan	297	323
Feb	288	249
Mar	305	317
Apr	301	245
May	228	244
Jun	301	238
Total	3269	3088



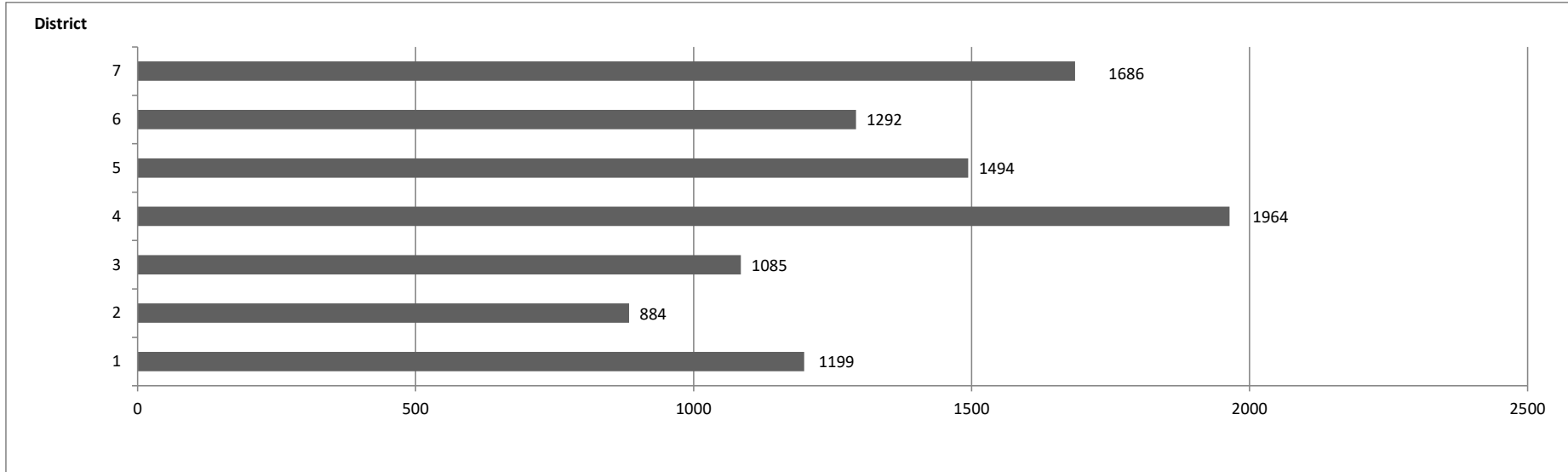
	FY 20-21	FY 21-22
Y-T-D	3269	3088



Pleadings Assigned - Three Year Comparison by Month

	District 1 Greenville			District 2 Anderson			District 3 Orangeburg			District 4 Charleston			District 5 Florence			District 6 Spartanburg			District 7 Richland		
	21-22	20-21	19-20	21-22	20-21	19-20	21-22	20-21	19-20	21-22	20-21	19-20	21-22	20-21	19-20	21-22	20-21	19-20	21-22	20-21	19-20
Jul	112	120	99	87	81	84	72	85	123	166	151	183	109	126	136	122	112	137	156	154	140
Aug	93	88	99	67	73	85	101	105	78	174	142	168	112	125	153	101	95	104	134	133	147
Sep	109	87	101	77	70	77	96	107	98	158	162	174	143	128	108	112	113	104	143	169	131
Oct	89	93	115	73	81	90	103	125	76	152	175	187	110	115	124	95	104	121	130	159	142
Nov	96	92	83	66	88	74	95	100	108	144	176	155	112	96	116	84	104	78	116	134	148
Dec	104	90	81	80	68	65	100	115	80	156	168	140	123	132	99	108	96	104	131	141	117
Jan	85	79	98	54	56	69	84	96	78	167	172	186	129	110	104	91	88	88	118	124	110
Feb	93	84	91	75	88	85	87	86	78	170	133	143	105	101	132	108	93	126	145	118	166
Mar	108	125	112	87	93	96	84	118	134	186	201	187	149	132	131	130	106	111	166	164	183
Apr	106	94	90	75	63	78	82	100	90	181	138	150	120	112	136	127	106	100	164	134	140
May	82	90	100	69	69	80	81	85	80	149	134	126	130	110	103	103	98	104	136	126	125
Jun	122	95	112	74	74	75	100	98	91	161	164	170	152	117	97	111	103	109	147	134	175
Totals	1199	1137	1181	884	904	958	1085	1220	1114	1964	1916	1969	1494	1404	1439	1292	1218	1286	1686	1690	1724

Pleadings Assigned by District Year to Date



**Judicial Department Statistcal Report
Statistics For Fiscal Year 2020-2021**

	July	Aug	Sept	Oct	Nov	Dec	Jan	Feb	March	April	May	June	Totals YTD 2020-2021
Claimant Pleadings	550	544	567	607	459	445	455	528	558	493	423	494	6,123
Defense Response to Pleadings	440	435	497	470	473	423	359	356	511	409	393	394	5,160
Defense Pleadings	334	261	288	329	288	287	307	300	341	288	285	303	3,611
Motions	133	196	131	117	111	96	111	135	130	129	124	118	1,531
Form 30	5	18	11	5	12	10	7	12	15	13	14	16	138
FC Hearings Held	4	4	5	2	6	1	12	6	3	6	3	7	59
FC Orders Served	15	4	7	10	4	4	6	6	9	11	6	10	92
Single Comm. Hearings Held	68	86	82	59	56	63	30	114	64	70	68	75	835
Single Comm. Orders Served	201	221	169	188	170	154	194	196	263	248	169	245	2,418
Single Comm. Pre-Hearing Conf Held	38	18	19	36	24	28	16	12	25	18	20	28	282
Consent Orders	316	272	283	248	264	261	260	247	279	257	237	295	3,219
Adminstrative Orders	13	15	9	18	5	61	12	28	14	14	11	16	216
Clincher Conference Requested	148	117	162	155	143	156	118	147	183	148	137	134	1,748
Informal Conference Requested	304	299	268	269	228	181	297	288	305	301	228	301	3,269
Informal Conference Conducted	230	234	165	244	163	190	241	206	184	195	182	232	2,466
Regulatory Mediations	38	26	40	43	35	30	22	21	34	32	32	26	379
Requested Mediations	60	54	47	58	66	30	50	59	77	43	49	54	647
Ordered Mediations	1	0	2	0	1	0	0	1	0	0	0	2	7
Mediation Resolved	47	64	37	56	42	64	51	55	74	61	41	63	655
Mediation Impasse	10	15	12	14	24	22	10	7	22	25	15	15	191
Mediation Held; Issues Pending	0	0	1	1	2	0	0	0	2	1	0	1	8
Claim Settled Prior to Mediation	8	8	8	8	6	20	6	7	15	10	5	14	115
Mediation Not Complete in 60 days	0	3	0	3	1	5	0	1	2	0	6	5	26

TAB 8

State of South Carolina



Workers' Compensation Commission

Executive Director's Report July 15, 2022

Hearing Rooms – Audio Visual Equipment

No update on the AV equipment installation in Hearing Rooms in A and B and the conference rooms.

Meetings/Activities

The Executive Director met with representatives of American Utility Auditors, participated in three interviews of applicants for employment, met with representatives of Key Mark, and participated in one meeting of the litigation team.

Constituent /Public Information Services

Due to a scheduling conflict the total of constituent contacts in the Executive Director's and the General Counsel's offices for the month of June was not obtained this month.

Financial Transactions Activity

During the month of June, the Director's office processed and approved 22 travel expense reports, 166 invoices, and 96 deposits for DOA to process in the SCIES system.

SCWCC Stakeholder Electronic Distribution List

For the month of June, we added two individuals. A total of 637 individuals currently receives notifications from the Commission. Staff will be reviewing the distribution to delete the inactive email addresses.

Advisory Notices

During the month of June, the office posted four (4) notices on the Commission's website and emailed it to the distribution list.

TAB 9

State of South Carolina

1333 Main Street, 5th Floor
P.O. Box 1715
Columbia, S.C. 29202-1715



TEL: (803) 737-5700
www.wcc.sc.gov

Workers' Compensation Commission

MEMORANDUM

TO: COMMISSIONERS

**FROM: Gary Cannon
Executive Director**

DATE: July 15, 2022

RE: FINANCIAL REPORT – FY Period ending June 30, 2022

Attached is the Budget vs. Actual Report for the General Fund and Earmarked Fund and the Revenue Report for the fiscal year period ending June 30, 2022. The benchmark for this period is 100%.

Expenditures

The year-to-date General Fund total expenditure is \$2,554,017, which is 88% of adjusted the operational budget.

The year-to-date Earmarked Fund total expenditure is \$3,634,406 which is 66% of budgeted amount.

Revenues

The year-to-date total revenue collected by the Earmarked Fund is \$2,692,154 which is 85% of budgeted revenues.

Self-Insurance Tax Funds

To date we have received \$ 5,192,966 of Self-Insurance Tax funds.

South Carolina Workers' Compensation Commission
Earmarked Fund Revenues
FY 2022 As of 6/30/2022
100% of year elapsed

Account	Acct No.	Budget	YTD Actual Revenue	% of Budget
WORKERS' COMP HEARING FEE	4110090000	1,091,322	1,016,800	93%
W COMP SELF INS APPL FEE	4160040000	26,555	7,350	28%
W COMP FILING VIOL PENALTY	4223030000	1,985,476	1,539,252	78%
PARKING FEE	4350040000	5,900	12,790	217%
W COMP AWARD REVIEW FEE	4350140000	32,251	24,500	76%
TRNG CONF REG FEE	4380020000		800	
PHOTOCOPYING FEE	4380050000	25,300	86,043	340%
SALE OF SERVICES	4480020000		2,205	
SALE OF LISTINGS & LABELS	4480060000	4,187	2,603	62%
REFUND PRIOR YR EXPENDITURE	4520010000		11	
RETURNED CHECKS	4530010000		(170)	
ADJUSTMENT TO AGENCY DEPOSITS	4530020000		(80)	
MISC REVENUE	4530030000		50	
Total Revenues		3,170,991	2,692,154	85%
Self Insurance Tax		2,500,000	5,192,996	208%
Total		5,670,991	7,885,151	139%

South Carolina Workers' Compensation Commission
Earmarked Fund Revenues
FY 2022 As of 6/30/2022
100% of year elapsed

Account	Acct No.	Budget	YTD Actual Revenue	% of Budget
WORKERS' COMP HEARING FEE	4110090000	1,091,322	1,016,800	93%
W COMP SELF INS APPL FEE	4160040000	26,555	7,350	28%
W COMP FILING VIOL PENALTY	4223030000	1,985,476	1,539,252	78%
PARKING FEE	4350040000	5,900	12,790	217%
W COMP AWARD REVIEW FEE	4350140000	32,251	24,500	76%
TRNG CONF REG FEE	4380020000		800	
PHOTOCOPYING FEE	4380050000	25,300	86,043	340%
SALE OF SERVICES	4480020000		2,205	
SALE OF LISTINGS & LABELS	4480060000	4,187	2,603	62%
REFUND PRIOR YR EXPENDITURE	4520010000		11	
RETURNED CHECKS	4530010000		(170)	
ADJUSTMENT TO AGENCY DEPOSITS	4530020000		(80)	
MISC REVENUE	4530030000		50	
Total Revenues		3,170,991	2,692,154	85%
Self Insurance Tax		2,500,000	5,192,996	208%
Total		5,670,991	7,885,151	139%

South Carolina Workers' Compensation Commission
Budget vs. Actual Report
FY 2022 As of 6/30/2022
100% of year elapsed

Fund 10010000 - GENERAL FUND

Administration

Commitment Item	Commitment Item Description	Current Budget	YTD Expenditures	% Used	Commitments	Remaining Balance
501015	DIRECTOR	142,153	142,153	100%		0
501058	CLASSIFIED POS	16,988				16,988
512001	OTHER OPERATING	323,033				
Total OTHER OPERATING:		323,033				323,033
Total Administration:		482,174	142,153	29%	0	340,021

Inform. services

Commitment Item	Commitment Item Description	Current Budget	YTD Expenditures	% Used	Commitments	Remaining Balance
5030067130	EQUIP&SUPP- EUC		22,828			
Total OTHER OPERATING:			22,828		0	-22,828
Total Inform. services:			22,828		0	-22,828

Claims

Commitment Item	Commitment Item Description	Current Budget	YTD Expenditures	% Used	Commitments	Remaining Balance
501058	CLASSIFIED POS	82,579	82,579	100%		0
Total Claims:		82,579	82,579	100%	0	0

Commissioners

Commitment Item	Commitment Item Description	Current Budget	YTD Expenditures	% Used	Commitments	Remaining Balance
501026	CHAIRMAN	172,258	172,258	100%		0
501033	COMMISSIONER	1,003,438	1,003,434	100%		4
501050	TAXABLE SUBS	70,000	60,862	87%		9,138
501058	CLASSIFIED POS	354,752	354,752	100%		0
501070	OTH PERS SVC	22,833	22,833	100%	0	0
Total Commissioners:		1,623,280	1,614,138	99%	0	9,142

South Carolina Workers' Compensation Commission
Budget vs. Actual Report
FY 2022 As of 6/30/2022
100% of year elapsed

Fund 10010000 - GENERAL FUND

Information Services FY18

Commitment Item	Commitment Item Description	Current Budget	YTD Expenditures	% Used	Commitments	Remaining Balance
561000	Special Item	1,695,084	0	0	0	1,695,084
Total Information Services FY18:		1,695,084	0	0	0	1,695,084

Insurance & Medical

Commitment Item	Commitment Item Description	Current Budget	YTD Expenditures	% Used	Commitments	Remaining Balance
501058	CLASSIFIED POS	31,365	31,365	100%		0
Total Insurance & Medical:		31,365	31,365	100%		0

Judicial

Commitment Item	Commitment Item Description	Current Budget	YTD Expenditures	% Used	Commitments	Remaining Balance
501058	CLASSIFIED POS	746				746
512001	OTHER OPERATING	29,852				
5021010005	LEGAL SRV-REPORTER		863			
5030070000	POSTAGE		4,000			
Total OTHER OPERATING:		29,852	4,863	16%	0	24,990
Total Judicial:		30,598	4,863	16%	0	25,736

Employer Contributions

Commitment Item	Commitment Item Description	Current Budget	YTD Expenditures	% Used	Commitments	Remaining Balance
513000	EMPLOYER CONTRIB	656,092	656,092	100%		0
Total Employer Contributions:		656,092	656,092	100%		0

Total GENERAL FUND:		4,601,172	2,554,017	56%	0	2,047,155
----------------------------	--	------------------	------------------	------------	----------	------------------

South Carolina Workers' Compensation Commission
Budget vs. Actual Report
FY 2022 As of 6/30/2022
100% of year elapsed

Fund 31C30000 - COVID-19 RESP RESERV

Inform. services

Commitment Item	Commitment Item Description	Current Budget	YTD Expenditures	% Used	Commitments	Remaining Balance
512001	OTHER OPERATING	100,000				
5030067130	EQUIP&SUPP- EUC		11,273			
	Total OTHER OPERATING:	100,000	11,273	11%	0	88,727
	Total Inform. services:	100,000	11,273	11%	0	88,727
	Total COVID-19 RESP RESERV:	100,000	11,273	11%	0	88,727

South Carolina Workers' Compensation Commission
Budget vs. Actual Report
FY 2022 As of 6/30/2022
100% of year elapsed

Fund 38440000 - EARMARKED FUND

Administration

Commitment Item	Commitment Item Description	Current Budget	YTD Expenditures	% Used	Commitments	Remaining Balance
501058	CLASSIFIED POS	791,985	200,513	25%		591,472
501070	OTH PERS SVC	41,000	3,188	8%		37,812
512001	OTHER OPERATING	2,282,671				
5020030000	PRINT / BIND / ADV		106			
5020077240	DP SERVICES – STATE		31,179			
5020120000	CELLULAR PHONE SVCS		1,863			
5021010003	LEGAL SRV-TRANSCRIPT		414			
5021020000	ATTORNEY FEES		30,435			
5021410000	EDUC & TRNG-STATE		75			
5021450000	MOTOR VEHICLE SVCS		72			
5021479207	JANITORIAL		62			
5021490000	AUDIT ACCT FINANCE		130			
5021530000	CATERED MEALS		323			
5021540000	NON-IT OTHER PRO SRV		5,660			
5021540001	PROF SRV-LANG INTER		75			
5024990000	OTH CNT-NON-IT & REA		842			
5030010000	OFFICE SUPPLIES		6,542			
5030010002	OFF SUP - MIN OFF EQ		9			
5030010004	SUBSCRIPTIONS		9,227			
5030030000	PRINTED ITEMS		4,258			
5030050000	PHOTO & VISUAL SUPP		134			
5030067101	PRGM LIC - APP SUPP		40,939			
5030067110	EQUIP&SUPP- DATA NET		1,188			
5030067130	EQUIP&SUPP- EUC		102,800			
5030067131	PLM- EUC		1,516			
5030067170	EQUIP&SUPP- PRINT EU		11,867		1,080	
5030070000	POSTAGE		21,973			
5031010001	FURNISHINGS		1,909			
5031010003	KITCHEN UTENSILS		243			
5031479203	JANITORIAL SUPPLIES		452			
5031639500	OTH SECURTY EXP SUPL		6			
5032410000	MED/SCIENT/LAB SUPP		177			

South Carolina Workers' Compensation Commission
Budget vs. Actual Report
FY 2022 As of 6/30/2022
100% of year elapsed

Fund 38440000 - EARMARKED FUND

5032820000	INSTRUCTIONAL MAT		748			
5033090000	EMPLOYEE RECOG AWARD		4,100			
5033990000	OTHER SUPPLIES		258			
5040060000	ST RENT-NON ST BLDG		314,964		1,128	
5040070000	RENT-ST OWN RL PROP		120			
5040490002	RENT-OTH-ROOM&VID		400			
5040490003	RENT PO BOX		1,544			
5040490009	RENT PARKING		14,238		1,593	
5040510000	INSURANCE-STATE		5,225			
5041010000	DUES & MEMBER FEES		6,384			
5041020000	FEES AND FINES		100			
5041020001	FF - BACKGRD CK		26			
5041840000	LEASE BLDG PRINCIPAL		67,249		-	
5041850000	LEASE BLDG INTEREST		1,854		-	
5050010000	IN ST-MEALS-NON-REP		1,290			
5050020000	IN ST-LODGING		4,512			
5050041000	HR-IN ST-AUTO MILES		2,812			
5050060000	IN ST-MISC TR EXP		153			
5050070000	TRNG-IN-ST REG FEES		1,329			
5050510000	OUT ST-MEALS-NON-REP		170			
5050570000	TRNG-OUT-ST REG FEE		930			
5051520000	REPORTABLE MEALS		17			
5051540000	LEASED CAR-ST OWNED		38,103			
Total OTHER OPERATING:		2,282,671	741,003	32%	3,801	1,537,867
Total Administration:		3,115,656	944,704	30%	3,801	2,167,151

Executive director

Commitment Item	Commitment Item Description	Current Budget	YTD Expenditures	% Used	Commitments	Remaining Balance
Total Executive director:					0	0

Inform. services

Commitment Item	Commitment Item Description	Current Budget	YTD Expenditures	% Used	Commitments	Remaining Balance
501058	CLASSIFIED POS		345,718			-345,718

South Carolina Workers' Compensation Commission
Budget vs. Actual Report
FY 2022 As of 6/30/2022
100% of year elapsed

Fund 38440000 - EARMARKED FUND

501070	OTH PERS SVC		3,000			-3,000
5020010001	OFF EQ SRV-NON-IT PL				1,296	
5020077100	SERVICES- APP SUP		17,695		73,823	
5020077110	SERVICES- DATA NET		125			
5020077170	SERVICES- PRINT EU		1,130			
5020077200	SERVICES- SERVERS		5,915			
5020077220	SERVICES- VOICENET		20,732		2,160	
5020077240	DP SERVICES – STATE		196,093			
5021330003	CONTR-STATE		39,000			
5021469316	SECURITY ALARM SRVC		2,838			
5024990000	OTH CNT-NON-IT & REA				4,822	
5030010000	OFFICE SUPPLIES		3,230			
5030010003	OFF SUP&EQ-NON-IT PL				8,666	
5030010004	SUBSCRIPTIONS		395			
5030067101	PRGM LIC - APP SUPP		18,032			
5030067110	EQUIP&SUPP- DATA NET		1,271			
5030067130	EQUIP&SUPP- EUC		4,222		4,650	
5030067131	PLM- EUC		1,175			
5030067141	PLM- ITSD		9,590			
5030067170	EQUIP&SUPP- PRINT EU		4,760		2,440	
5030067211	PLM- STORAGE		50			
5030090000	COMMUNICATION SUPP		1,300			
5031010000	LAUNDRY SUPPLIES		53			
5031469316	SCRTY ALRM SYS SUPPL		425			
5040057000	CONTINGNT RENT - IT		4,104		-	
5041010000	DUES & MEMBER FEES		100			
5050010000	IN ST-MEALS-NON-REP		285			
5050020000	IN ST-LODGING		1,323			
5050041000	HR-IN ST-AUTO MILES		554			
5050050000	IN ST-OTHER TRANS		554			
5050070000	TRNG-IN-ST REG FEES		1,874			
5050510000	OUT ST-MEALS-NON-REP		100			
5050520000	OUT ST-LODGING		1,032			
5050531000	HR-OUT ST-AIR TRANS		498			
5050550000	OUT ST-OTHER TRANS		260			

South Carolina Workers' Compensation Commission
Budget vs. Actual Report
FY 2022 As of 6/30/2022
100% of year elapsed

Fund 38440000 - EARMARKED FUND

5050560000	OUT ST-MISC TR EXPEN		120			
Total OTHER OPERATING:			338,835		97,857	-436,692
Total Inform. services:			687,552		97,857	-785,410

Claims

Commitment Item	Commitment Item Description	Current Budget	YTD Expenditures	% Used	Commitments	Remaining Balance
501058	CLASSIFIED POS	276,850	220,301	80%		56,549
501070	OTH PERS SVC	4,000	4,000	100%		0
512001	OTHER OPERATING	19,700				
5030010000	OFFICE SUPPLIES		22			
5040510000	INSURANCE-STATE		2,613			
5050020000	IN ST-LODGING		164			
Total OTHER OPERATING:		19,700	2,798	14%	0	16,902
Total Claims:		300,550	227,099	76%	0	73,451

South Carolina Workers' Compensation Commission
Budget vs. Actual Report
FY 2022 As of 6/30/2022
100% of year elapsed

Fund 38440000 - EARMARKED FUND

Commissioners

Commitment Item	Commitment Item Description	Current Budget	YTD Expenditures	% Used	Commitments	Remaining Balance
501033	COMMISSIONER		-254			254
501050	TAXABLE SUBS	60,000				60,000
501070	OTH PERS SVC	10,000	462	5%	0	9,538
512001	OTHER OPERATING	230,700				
5020077112	NCV- DATA NET		1,026			
5020080000	FREIGHT EXPRESS DELV		228			
5020120000	CELLULAR PHONE SVCS		21,544			
5021010003	LEGAL SRV-TRANSCRIPT		2,583			
5021010005	LEGAL SRV-REPORTER		66,124			
5021410000	EDUC & TRNG-STATE		150			
5021540000	NON-IT OTHER PRO SRV		345			
5021540001	PROF SRV-LANG INTER		150			
5030010000	OFFICE SUPPLIES		120			
5030090000	COMMUNICATION SUPP		1,050			
5040510000	INSURANCE-STATE		15,385			
5050010000	IN ST-MEALS-NON-REP		1,106			
5050020000	IN ST-LODGING		3,711			
5050031000	HR-IN ST-AIR TRANS		82			
5050040000	IN ST-AUTO MILEAGE		206			
5050041000	HR-IN ST-AUTO MILES		21,204			
5050060000	IN ST-MISC TR EXP		265			
5050080000	IN ST-SUBSIST ALLOW		12,638			
5050510000	OUT ST-MEALS-NON-REP		85			
5050570000	TRNG-OUT-ST REG FEE		565			
Total OTHER OPERATING:		230,700	148,568	64%	0	82,132
Total Commissioners:		300,700	148,776	49%	0	151,924

South Carolina Workers' Compensation Commission
Budget vs. Actual Report
FY 2022 As of 6/30/2022
100% of year elapsed

Fund 38440000 - EARMARKED FUND

Insurance & Medical

Commitment Item	Commitment Item Description	Current Budget	YTD Expenditures	% Used	Commitments	Remaining Balance
501058	CLASSIFIED POS	435,902	373,266	86%		62,636
501070	OTH PERS SVC	31,200	14,911	48%		16,289
512001	OTHER OPERATING	54,500				
5020080000	FREIGHT EXPRESS DELV		95			
5021540000	NON-IT OTHER PRO SRV		18,715			
5024990000	OTH CNT-NON-IT & REA		1,120			
5030010000	OFFICE SUPPLIES		321			
5030010004	SUBSCRIPTIONS		782			
5030030000	PRINTED ITEMS		421			
5030070000	POSTAGE		15			
5040510000	INSURANCE-STATE		3,193			
5050010000	IN ST-MEALS-NON-REP		224			
5050020000	IN ST-LODGING		2,347			
5050031000	HR-IN ST-AIR TRANS		288			
5050041000	HR-IN ST-AUTO MILES		973			
5050050000	IN ST-OTHER TRANS		87			
5050060000	IN ST-MISC TR EXP		102			
5050070000	TRNG-IN-ST REG FEES		350			
5050510000	OUT ST-MEALS-NON-REP		85			
5050570000	TRNG-OUT-ST REG FEE		415			
Total OTHER OPERATING:		54,500	29,533	54%	0	24,967
Total Insurance & Medical:		521,602	417,710	80%	0	103,892

South Carolina Workers' Compensation Commission
Budget vs. Actual Report
FY 2022 As of 6/30/2022
100% of year elapsed

Fund 38440000 - EARMARKED FUND

Judicial

Commitment Item	Commitment Item Description	Current Budget	YTD Expenditures	% Used	Commitments	Remaining Balance
501058	CLASSIFIED POS	470,084	457,327	97%		12,757
501070	OTH PERS SVC	62,193	46,620	75%		15,573
512001	OTHER OPERATING	12,800				
5021010003	LEGAL SRV-TRANSCRIPT		254			
5021010005	LEGAL SRV-REPORTER		3,200			
5030010000	OFFICE SUPPLIES		149			
5030067130	EQUIP&SUPP- EUC		167			
5030070000	POSTAGE		4,000			
5040490008	RENT POSTAGE EQUIP		2,145			
5040510000	INSURANCE-STATE		2,613			
5050020000	IN ST-LODGING		164			
5050041000	HR-IN ST-AUTO MILES		50			
Total OTHER OPERATING:		12,800	12,742	100%	0	58
Total Judicial:		545,077	516,688	95%	0	28,389

Employer Contributions

Commitment Item	Commitment Item Description	Current Budget	YTD Expenditures	% Used	Commitments	Remaining Balance
513000	EMPLOYER CONTRIB	724,260	691,876	96%	0	32,384
Total Employer Contributions:		724,260	691,876	96%	0	32,384

Total EARMARKED FUND:		5,507,845	3,634,406	66%	101,658	1,771,781
------------------------------	--	------------------	------------------	------------	----------------	------------------

South Carolina Workers' Compensation Commission

Commitments

FY 2022 As of 6/30/2022

Fund 38440000 - EARMARKED FUND

Administration

Commitment Item	Commitment Item Description	Vendor	Commitment
5040060000	ST RENT-NON ST BLDG	GALIUM 1333 MAIN LLC	1,128
5040490009	RENT PARKING	REPUBLIC PARKING SYSTEM INC	1,593
Total Administration:			2,721

Inform. services

Commitment Item	Commitment Item Description	Vendor	Commitment
5020010001	OFF EQ SRV-NON-IT PL	SUMMIT SOLUTIONZ INC	1,296
5020077100	SERVICES- APP SUP	INSURANCE SERVICES OFFICE INC	62,640
5020077220	SERVICES- VOICENET	NWN CORPORATION	2,160
5024990000	OTH CNT-NON-IT & REA	SUMMIT SOLUTIONZ INC	4,822
5030010003	OFF SUP&EQ-NON-IT PL	SUMMIT SOLUTIONZ INC	8,666
5030067130	EQUIP&SUPP- EUC	KEYMARK INC	4,650
5030067170	EQUIP&SUPP- PRINT EU	US INK AND TONER INC	2,440
Total Inform. services:			86,674

Total EARMARKED FUND:			101,658
------------------------------	--	--	----------------

Any items with vendor "Not assigned" are pending financial adjustments. Any commitment on the Budget vs. Actual Report that is missing from this list is a travel commitment.